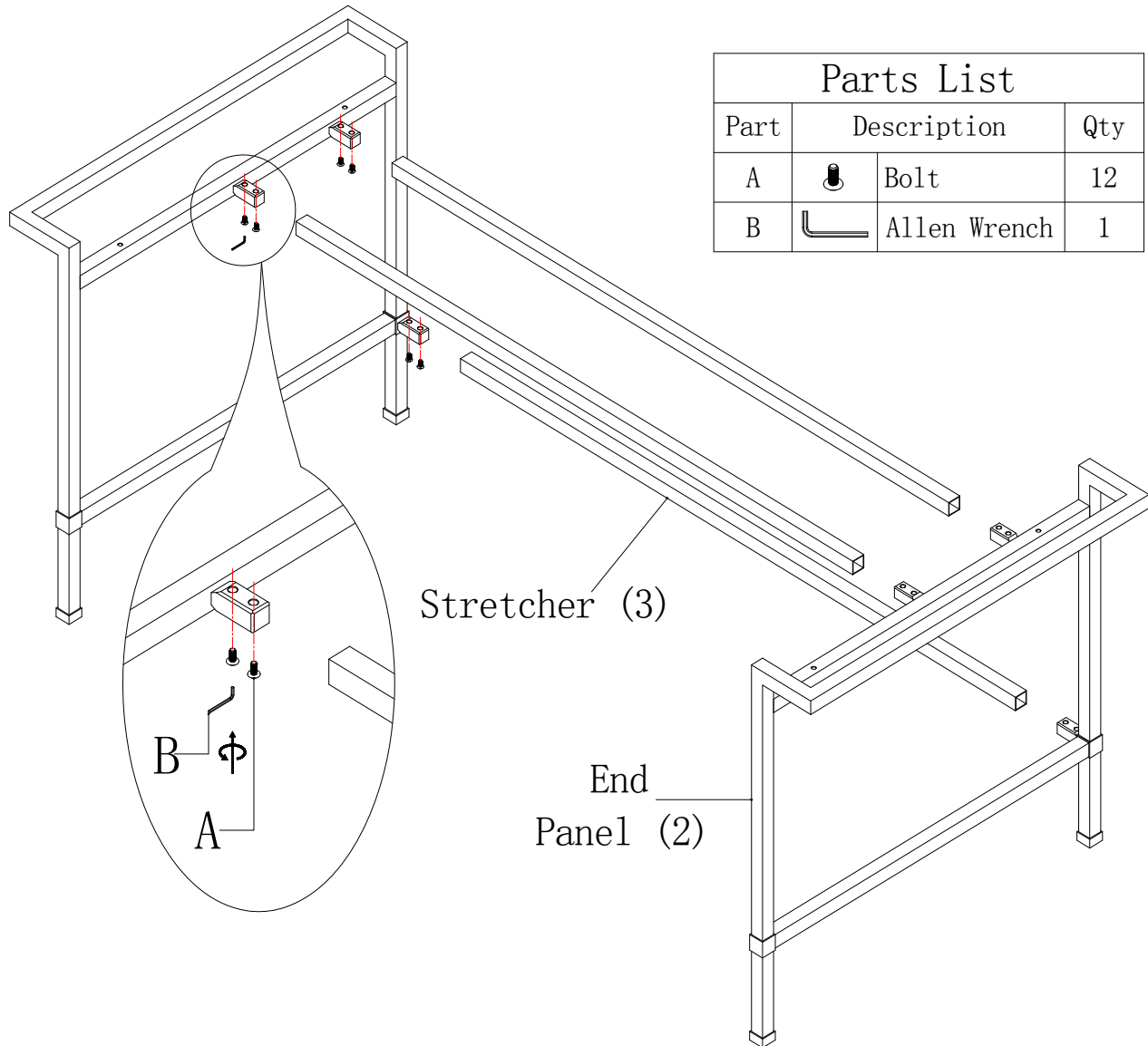




SLIGH

OFFICE AND MEDIA DESIGNS

ASSEMBLY INSTRUCTIONS

100PR-402 Writing Desk Metal Base Assembly



Parts List			
Part	Description		Qty
A		Bolt	12
B		Allen Wrench	1

1. Lay one End Panel on flat, clean, non-marring surface.
2. Insert one Stretcher onto one tube protruding from End Panel. Align holes on Stretcher with holes on tube.
3. Use Allen Wrench (B) to attach Stretcher to tube with (2) Bolts (A). Do not fully tighten bolts at this time.
4. Repeat steps 2 and 3 for other (2) Stretches.
5. Insert (3) tubes of other End Panel into other ends of Stretches. Make sure that holes in tubes align with holes in Stretches.
6. Use Allen Wrench (B) to attach other ends of Stretches to other End Panel. Do not fully tighten bolts at this time.
7. Return assembled base to its upright position. Securely tighten all bolts on base. Place base in desired location.

For additional consumer assistance please contact your Sligh dealer or call our Consumer Services Department at 1-336-474-5300, Monday-Friday, 8-5 Eastern