

senelux

INSTRUCTION MANUAL

10 Inch Wall-mounted Oscillating Fan



Model: FW2

ENGLISH

TABLE OF CONTENTS

(i).	Points For Attention	02
(ii).	Package Content	03
(iii).	Specifications	03
(iv).	Product Details	04
(v).	How To Install	05
(vi).	How To Clean	06
(vii).	Trouble Shooting	07
(viii).	Attention	07
(ix).	Warranty	09
(x).	Information	09

1. POINTS FOR ATTENTION

Before using the product, it is essential to carefully read and follow the instructions provided in this user manual. Additionally, it is recommended to keep the manual in a safe place for future reference.

Warning

1. Avoid electrical shock and fire: Ensure that water, other liquids, and flammable cleaning agents do not enter the product.
2. Prevent combustion: Refrain from spraying any combustible materials, such as insecticides or perfumes, in the vicinity of the product.
3. Check power supply compatibility: Before connecting the product to the power supply, verify whether the product's voltage requirement aligns with the local power supply voltage.
4. Secure placement: Always place and use this product on a stable, flat, and level surface.
5. To avoid damage to the product and ensure its optimal performance, please refrain from inserting fingers or objects into the front cover.

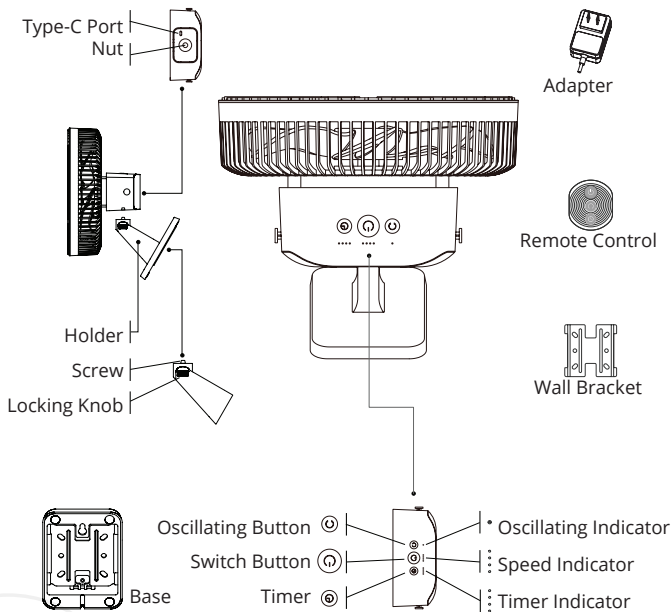
2. PACKAGE CONTENT

1 x Fan (2.24lb/1020g)	1 x Wall Bracket
2 x Nails	1 x Adapter (1.8m/5.9feet)
1 x Remote Control	1 x Instruction Manual
1 x Base	1 x Holder

3. SPECIFICATIONS

Product Name	10 Inch Wall-mounted Oscillating Fan
Main Material	ABS Plastic
Input	100-240V/50-60Hz/0.5A Max
Output	12v/1.0A
Rated Power	11 W
Oscillating Degree	90°
Vertical Tilt Degree (manual)	60°
Size Information	218 x 234 x 271mm
Timer (hours)	0.5-1.5-4-8
RPM	600-1000-1200-1380R/min

4. PRODUCT DETAILS



REMOTE CONTROL BUTTONS

	On/Off button: Cycle in Low-Mid-High-Super-Off
	Oscillating On/Off
	Timer button (0.5 hours - 1.5 hours - 4 hours - 8 hours)

5. HOW TO INSTALL



Attach the holder's screw to the fan's nut, ensuring the holder's bump aligns with the nut's groove. Twist the holder clockwise until secure.



Thread the Type-C plug through the opening in the fan base as illustrated, then connect it to the Type-C port.



Position the cord within the designated slot. Ensure that you leave at least 10 centimetres (about 4 inches) of the cord's length outside the slot. This extra length is essential for the fan to oscillate.



Place the main body into the fan base by aligning it with the slot in the base.



After the main body is seated in the base, press the locking knob at the back of the base downwards to secure it.



Connect the cord to the Type-C port on the fan.

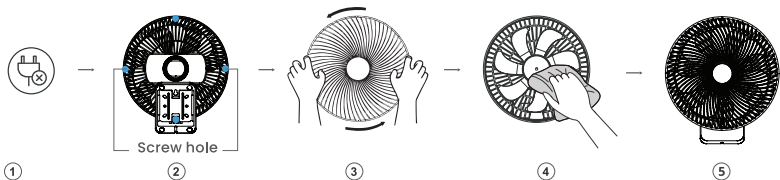


Attach the wall bracket to the wall using the nails provided



Guide the fan base into the bracket from top to bottom to finalise the installation.

6. HOW TO CLEAN



1. Unplug the power cord prior to cleaning.
2. Remove the four screws on the fan's back cover using a screwdriver (not provided).
3. Rotate the front cover counter clockwise to remove it.
4. Wipe the fan blades with a dry cloth. Avoid using water or a damp cloth since the fan blades are not water-resistant.
5. To reattach the front cover, rotate it clockwise.

NOTICE: Cleaning and maintenance of the product should not be carried out by children without adult supervision.

7. TROUBLE SHOOTING

MULFUNCTION	POSSIBLE REASON	SUGGESTED SOLUTION
Not working/ No power	No power	Check the power supply
	Power cord, plug, or socket damage or not connected	Ensure the plug and socket are well connected
		Check if the voltage of power supply is too high/ too low

8. ATTENTION

1. If the supply cord is damaged, it must be replaced by the manufacturer, or qualified technician for safety reasons.
2. Avoid covering the appliance with clothes or any materials during operation to prevent overheating or motor malfunction.
3. Use the appliance only with a power supply and voltage that match its specifications.
4. Should the product remain idle for an extended period, it is advisable to disconnect it from the power source and keep it in a secure location.
5. Keep the appliance away from high-temperature environments, such as near a stove, for optimum performance.

6. Do not pull the power cord to lift or move the appliance.
7. The appliance should not be immersed in water when cleaning.
8. While in operation, the device should be placed out of reach of children.
9. This appliance is for indoor use only.
10. Disassembling the appliance will void the warranty.
11. Avoid modifying the appliance or using it with other devices to prevent hazards.
12. Do not insert your fingers or other objects into it to avoid accidents.
13. Avoid positioning this appliance in any of the following locations:
 - a. Highly humid areas, such as basements
 - b. Areas directly exposed to sunlight or rain
 - c. Locations where explosive materials are stored
 - d. Areas with extreme temperatures, either hot or cold

9. WARRANTY

All Senelux products are covered from the original purchase date by a standard 2-year warranty. To register your warranty, please visit www.senelux.co.uk.

If, in the unlikely event that your product has any manufacturing defect, please get in touch with our customer service team at support@senelux.co.uk. Please quote your order number and any other relevant details regarding your issues. FAQs and help regarding all our products are available on our website and YouTube channel.

Any unauthorised repair of this product invalidates your warranty.

10. INFORMATION

If you want further information regarding using this product or any of our products, don't hesitate to contact us via the details below.

Senelux Ltd
Unit 5-6 105 Boundary Street
Liverpool L5 9YJ
United Kingdom
Email – info@senelux.co.uk
Website – www.senelux.co.uk



Be sure to tag us in your photos on social media using #seneluxathome to be featured



Thank you very much for using our products.
Please read the user manual carefully before use and keep it for future reference.