


SPECIFICATIONS

Features/Benefits

- Diverter on Valve
- Requires Gerber Treysta® Rough-In, G00GS555S (Horizontal Inputs) or G00GS557S (Vertical Inputs), Sold Separately
- Includes Treysta® Ceramic Disc Pressure Balance Cartridge
- Includes Mono Chic® 5" x 8" Single Function Showerhead, D460066 (1.75 gpm) or D460059 (2.0 gpm)
- 1.75 gpm (6.6 L/min) Max Flow @ 80 psi (D511044TC)
- 2.0 gpm (7.6 L/min) Max Flow @ 80 psi (D512044TC)
- 15" Metal Shower Arm, D481144
- 7" Tub Spout, D606725
- Finish-Matched Deep Wall Kit, D113001, Sold Separately
- Finish-Matched Shallow Wall Kit, GA663B11, Sold Separately

Available Color/Finishes

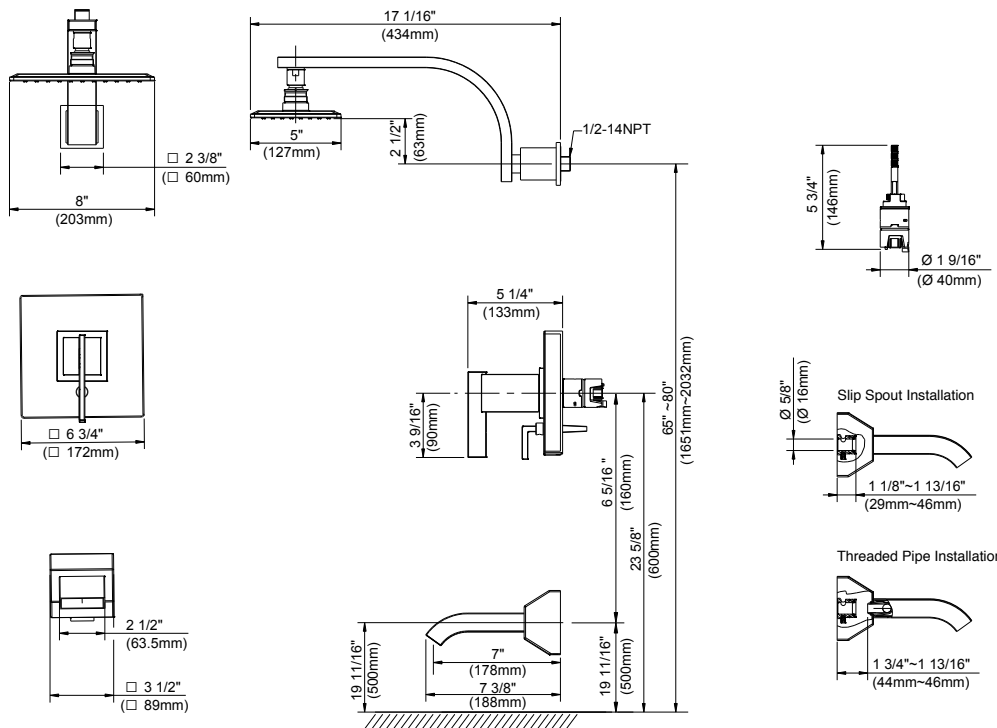
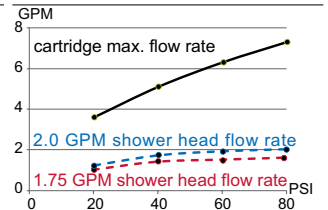
Color	Description
	Chrome
Please see danze.com or current price list for available finishes. Finish is defined by additional suffix.	

Standards & Certifications



(Lever Handle)

Flow Rate



Submittal Information:

Name: _____ Contractor: _____
Location: _____ Contact #: _____