


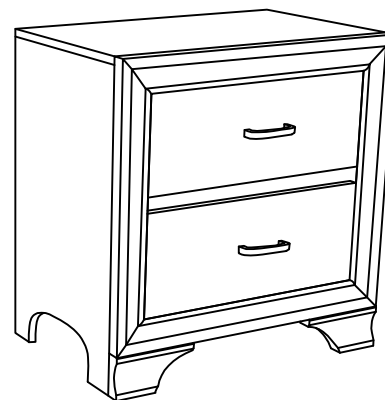
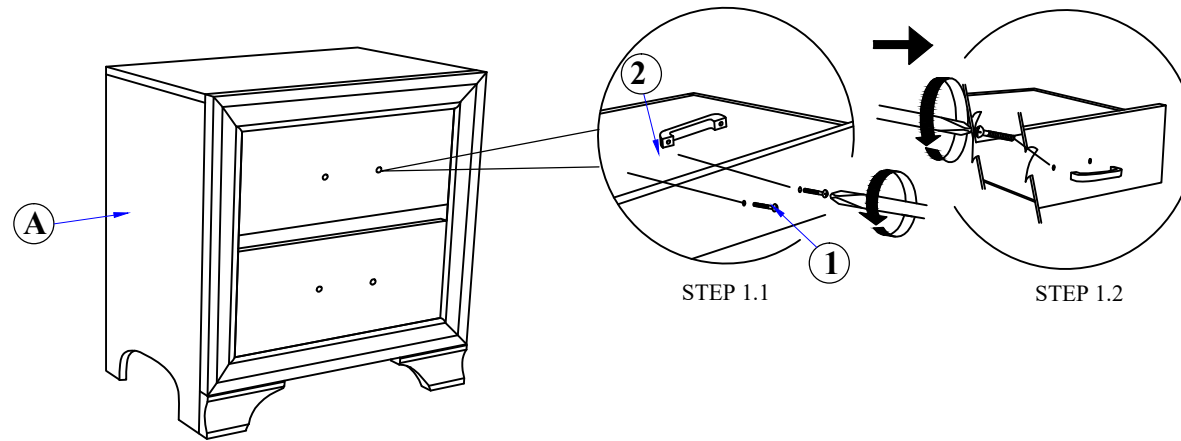


ASSEMBLY INSTRUCTIONS

NIGHT STAND		
(BOX 1) BOX OF NIGHT STAND		
NO	ITEM	QTY
A	NIGHT STAND 	1 PC
(BOX 1) HARDWARE LIST		
NO	ITEM	QTY
1	Truss Head Machine Screw m4x32mm Bk 	4 PCS
2	HANDLE 	2 PCS

STEP 1 : Remove HANDLE (2) using a Philips head screw driver as shown in illustration STEP - A. Re-install the HANDLE (2) as per diagram STEP - B. Repeat STEP - A STEP - B until HANDLE (2) are attached correctly.



COMPLETED ASSEMBLY

NOTE : MUST TIGHTEN SCREWS **PERIODICALLY** WITH USE SCREW WILL BECOME LOOSE CHECK TIGHTNESS OF ALL SCREW EVERY 6-8 WEEKS.