



TURNER BIANCA	Brands	Pre-Production Review			
Brand:	CATHERINE LANSFIELD				
Design Name:	STARS AND CHECK				
BDS:	61148				
Season:	SS26				
Category:	CL KIDS				
Factory:	LUCKY				
Products:	DUVET SETS	FITTED SHEETS	CURTAINS		
Country of Origin	PAKISTAN	PAKISTAN	PAKISTAN		
Agreed Pack Fold Image					
Packaging Type Required	CL KIDS	CL KIDS	CL KIDS		
Colour	BLUE	BLUE	BLUE		
FACTORY DESIGN QUALITY FRONT	52% POLYESTER 48% COTTON	52% POLYESTER 48% COTTON	52% POLYESTER 48% COTTON		
FACTORY DESIGN QUALITY REVERSE	52% POLYESTER 48% COTTON	52% POLYESTER 48% COTTON	52% POLYESTER 48% COTTON		
FACTORY DESIGN QUALITY TRIMS	POM POM ON PILLOWCASE	POM POM ON PILLOWCASE	POM POM ON PILLOWCASE		
TC OR WEIGHT	76X62 30X30	76X62 30X30	76X62 30X30		
PRINT TECHNIQUE	PRINTED	PRINTED	PRINTED		
FACE PRINT TYPE	ROTARY	NA	NA		
REVERSE	ROTARY	NA	NA		
PILLOWCASE	ROTARY	NA	NA		
CURTAIN HEADER	NA	NA	EYELETS		
FASTENING	CL BUTTONS				
Fill Weight					
Sizes Selected	S D	S D	E6672		
Finishes Face					
Finishes Reverse / Lining					
Technique					
Any compromise on physical performance?					
Is the fabric directional?					
Any batch consistency challenges?					
Any speciality - glitter, pearl, foil?					
Does the speciality print perform to 25 washes?					
Proposed: Care Symbols Wash Instructions Logo's Proposed	 <p>BLEACH, 1 DOT TUMBLE DRY, 2 DOT IRON, DO NOT DRY CLEAN ADDITIONAL COMMENTS: WASH BEFORE USE, WASH DEEP COLOURS SEPARATELY, DO NOT BLEACH OR DRY CLEAN, TUMBLE DRY ON A LOW HEAT SETTING, IRON ON REVERSE ONLY, KEEP AWAY FROM FIRE</p>				
Any additional disclaimers required?					
Red Seals required?					
User Trials required?					
Styling Details					
Additional Styling Details (e.g. width / colour / Quilted etc)					
Cutting (Random / Precision etc)					
Trims Embellishment					
Opening / Fastening	BUTTONS				
Fastening Colour - dyed to match?					
Amendments Requested					
Any other comments from the factory					
Any other comments					
Approved Buying Sample Image or CAD layout					

FABRIC SPECIFICATIONS TO BE COMPLETED

**TURNER
BIANCA**

PLEASE COMPLETE THIS DOCUMENT FOR WOVEN, KNITTED & TERRY CONSTRUCTIONS:

TURNER BIANCA FABRIC SPECIFICATION

PRODUCT DETAILS					
DATE	31/08/2021		FIBRE COMPOSITION - GRIEGE	PC 52:48	
BDS NUMBER			FIBRE COMPOSITION - FINISHED	PC 52:48	
PRODUCT SUPPLIER	LUCKY TEXTILE MILLS		FABRIC DESCRIPTION		
FABRIC SUPPLIER	LUCKY TEXTILE MILLS		FABRIC QUALITY	PC(52:48) 30/30 76X62 1/1	
FABRIC COUNTRY OF ORIGIN	PAKISTAN				
FIBER COUNTRY OF ORIGIN	PAKISTAN				
FABRIC CONSTRUCTION DETAILS					
GREIGE SOURCE			DYER/FINISHER	Lucky Textile Mills Limited	
FINISHING ROUTE	Single/Desize → Bleach → Set for Print → Print → Cure → Finish				
DYE CLASS	Pigment	ANY PROMOTIONAL CLAIM			
FOR KNITTED FABRICS.					
GAUGE	YARN COUNT	TYPE OF SPINNING (OE/Ring, Carded/Combed/Compact..)			
WIDTH (cm)	WEIGHT (gsm)	COURSES	WALES		
FOR WOVEN FABRICS.					
WIDTH (cm)	WEIGHT (gsm)	WEFT-YARN COUNT	30	WARP-YARN COUNT	30
ENDS - GRIEGE	76	PICKS - GRIEGE	62	Twist of WEFT	18-19 TPI
ENDS - FINISHED	76	PICKS - FINISHED	61	Twist of WARP	18-19 TPI
FOR TOWELLING.					
WIDTH (cm)	WEFT YARN COUNT	WARP YARN COUNT	PILE YARN COUNT		
WEIGHT (gsm)	Twist of WEFT	Twist of WARP	Twist of PILE		
ENDS	PICKS	TERRY RATIO	LOOP LENGTH (mm)		
TYPE OF SPINNING (OE/Ring, Carded/Combed/Compact..)					

PLEASE REQUEST COMPLETION OF THIS DOCUMENT FOR BATH MATS & RUGS:

	SPECIFICATION
PILE	
BASE	
COTTON DYES	
POLYESTER THREAD	
PIPING	
YARN TWIST	
FABRIC WEIGHT	
FABRIC STRUCTURE	
STAPLE LENGTH mm	
DYE CLASS USED	
FINISH USED	
PIECE WEIGHT	
PILE YARN COUNT	
PICKS (SPI)	
GAUGE (REED)	
PILE HEIGHT	
QUALITY OF YARN IN PILE	
QUALITY OF YARN IN CANVAS	

**TURNER
BIANCA**

Brands

Brand	CATHERINE LANSFIELD	Technologist	ALEX ARMSTRONG
Design Name	STARS AND CHECK	Product Exec	SALLY ROBERTS
BDS	61148	Designer	TABATHA MARDLE
Factory	LUCKY	Date	

GENERAL COMMENTS/ OBSERVATIONS/ APPROVALS

11.08.25
Overall, this looks good, I think we just need to make sure the front is the same brightness as the reverse as the front blue shades are looking a little dull in comparison.



TB TECHNICAL / COMMERCIAL / DESIGN COMMENTS

APPROVED REJECTED

Severity / Probability	Slight Harm	Harm	Serious Harm
Highly Unlikely 1	1	2	3
Unlikely 2	2	4	6
Likely 3	3	6	9
Highly Likely 4	4	8	12

Injury Scenarios	Probability	Severity	Comments

Buying Sample Log

BUYING SAMPLE - Images / Observations/ Comments/ Actions

RE: 5526 BIANCA PCL's

Karen Whigley

To: Alex Anderson, Aysel Sulaiman, Sarah Suter, Tamee Suter, "Ashli Jay", alex@turnerbianca.com, alex@turnerbianca.com

From: Karen Whigley, Tabatha Mardle, Sally Roberts

Subject: 5526 BIANCA PCL's

CAUTION: This email originated from outside of Turner Bianca. Do not click links or open attachments unless you recognize the sender and know the content is safe.

Dear Kate,

Re: 5526 BIANCA PCL's

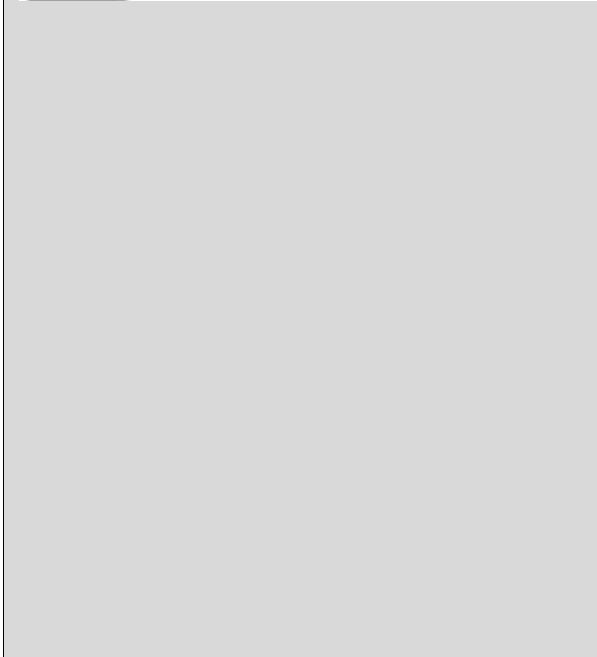
Tabitha Mardle

To: Aysel Sulaiman, Sally Roberts, Sarah Suter, Karen Whigley, Alex Anderson, "Ashli Jay", "Theresa Wagar Ahmed", alex@turnerbianca.com, "Ash Bala", "Marlenea Iqbal", "Saverio Sotgiu", "Tara"

Hi Ashli,

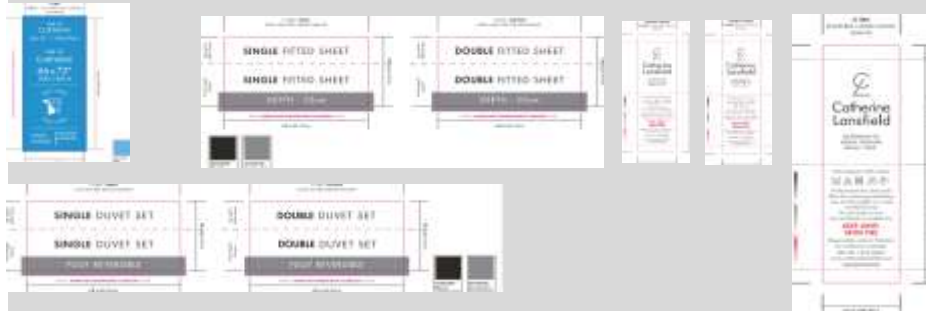
Clary noted. If you can try and get the tones in the same family of colour, then this will help. Separately we liked both, but the issue is that they don't co-ordinate and it's looking a little strange. Thanks for your help on this, Tabitha.

Tabitha Mardle
Senior Designer



Brands		Approved Packaging Soft Copy	
Brand	CATHERINE LANSFIELD	Technologist	ALEX ARMSTRONG
Design Name	STARS AND CHECK	Product Desc	SALLY ROBERTS
BDS	61148	Marketing & Graphics	BETH TINKER
Factory	LUCKY	Date	

APPROVED SOFT COPY IMAGES/ SCREEN SHOTS



STYLE CODE	OPTION	BARCODE	SIZE ON SIZE STICKER
BD/61148/W/SQ5/BL	SINGLE DUVET SET	5056841310414	
BD/61148/W/DQ5/BL	DOUBLE DUVET SET	5056841310384	
BD/61148/W/SD/BL	SINGLE FITTED SHEET	5056841310407	
BD/61148/W/DFD/BL	DOUBLE FITTED SHEET	5056841310377	
BD/61148/W/E6672/BL	CURTAINS 66X72 INCH	5056841310391	



**TURNER
BIANCA**

Brands

Test Report Results

Testing Required	Requirements	Reference	Accredited Testing House	Colour / Item Tested	Test Report Number	Date of report	*Results / Grade	Comments
BS EN ISO 105 E01	Colourfastness to water - Requirement: Change 4 staining 4							
BS EN ISO 105 X12	Colourfastness to Rubbing (Wet & Dry) - Requirement: Dry 4, Wet 4							
BS EN ISO 105 B02	Colourfastness to Light - Requirement: Standard 4							
BS EN ISO 105 C06	Colourfastness to washing - Requirement change 4 staining 4							
1007/2011/EU	Fibre composition							
EN ISO 6330:2012	Dimensional Stability to Washing- Requirement +/- 3% for synthetic blends & +/-5% for cotton							
EN ISO 6330:2012	Appearance after Machine Washing (1 wash as per care label) - Requirement +/-3% and general appearance graded as satisfactory							
EN ISO 13934-2	Tensile Strength - Requirement 25KG							
EN ISO 13937-1	Tear Strength - Requirement 1000cN							
EN ISO 13935-2	Seam strength - Requirement: >120N							
EN ISO 13936-1	Seam Slippage - Requirement: 6mm Seam opening 12KG Load							
EN ISO 12945-2	Pilling Resistance - Requirement 2,000 revs, Grade 4							

**TURNER
BIANCA**

Brands

Brand	CATHERINE LANSFIELD	Technologist	ALEX ARMSTRONG
Design Name	STARS AND CHECK	Product Exec	SALLY ROBERTS
BDS	61148	Designer	TABATHA MARDLE
Factory	LUCKY	Date	

GENERAL COMMENTS/ OBSERVATIONS/ APPROVALS

06.10.25 bulk approved

13.10.25 curtains - pattern match checked

TB TECHNICAL / COMMERCIAL / DESIGN COMMENTS

APPROVED

REJECTED

PACKAGING CHECKLIST

CHECKS	COMMENTS
Product Exec	
Technologist	
Insert wording and spelling matches approved soft copy	YES
Insert matches colour standard	YES
Photography matches product	YES
Pack Size	37 X 27
Fold Correct	YES
Fibre composition stated in EQP or BOP	YES
Fibre composition stated on care label	YES
Stated fibre composition is correct	YES
Care icons correct on BOP	YES
Care icons correct on care label	YES
Positioning of labels	YES
Child safety warning correct, clear and colour fast	YES
Correct text use of 3rd party info	YES
Correct TB logo's	YES
Correct 3rd party logo's	YES

GOLD SEAL LOG

GOLD SEAL - Images / Observations/ Comments/ Actions

