

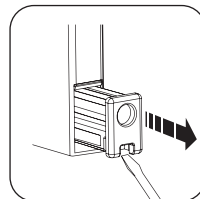
# EXTRA TALL PREMIER PRESSURE GATE - MODEL XTPPG

## EXTENSION IDENTIFIER & INSTALLATION

### WHICH EXTENSIONS YOU WILL NEED:

(in conjunction with the basic gate)

Opening Size	Small	Medium	Large
32.5 to 35"	✓		
35 to 37.75"		✓	
37.75 to 40.5"	✓	✓	
40.5 to 43.25"			✓
43.25 to 46"	✓		✓
46 to 48.75"		✓	✓
48.275 to 51.5"	✓	✓	✓
51.5 to 54.25"			✓✓



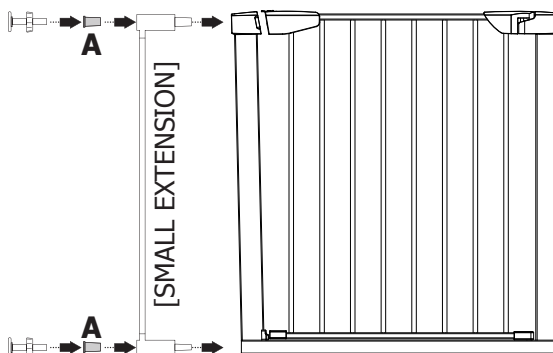
STEP ONE: Remove basic gate foot inserts at top and bottom of preferred extension side with flathead screwdriver. You will insert these below marked "A".

**All inserts can be attached on either side of gate.**

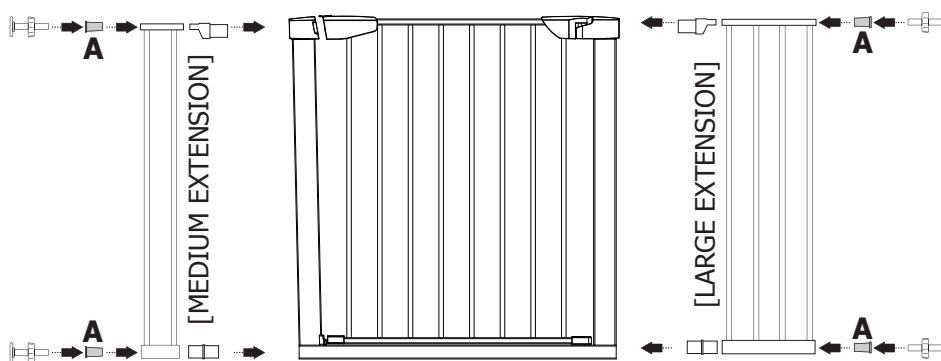
### EXCEPTION:

In any combination with a small extension, small extension **MUST** attach to gate **FIRST**. (SEE BOTTOM DIAGRAM)

### SMALL EXTENSION



### MEDIUM or LARGE EXTENSIONS



### SMALL + MEDIUM + LARGE EXTENSION COMBO

