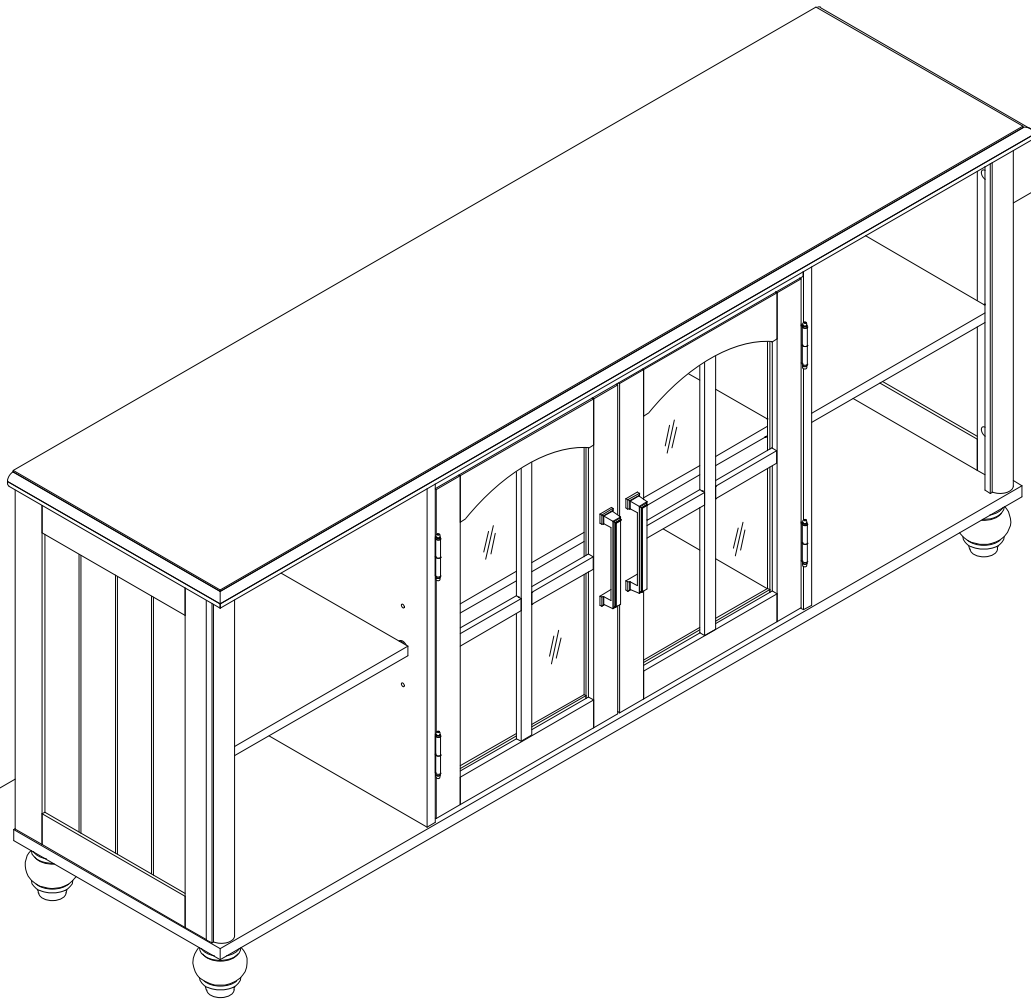
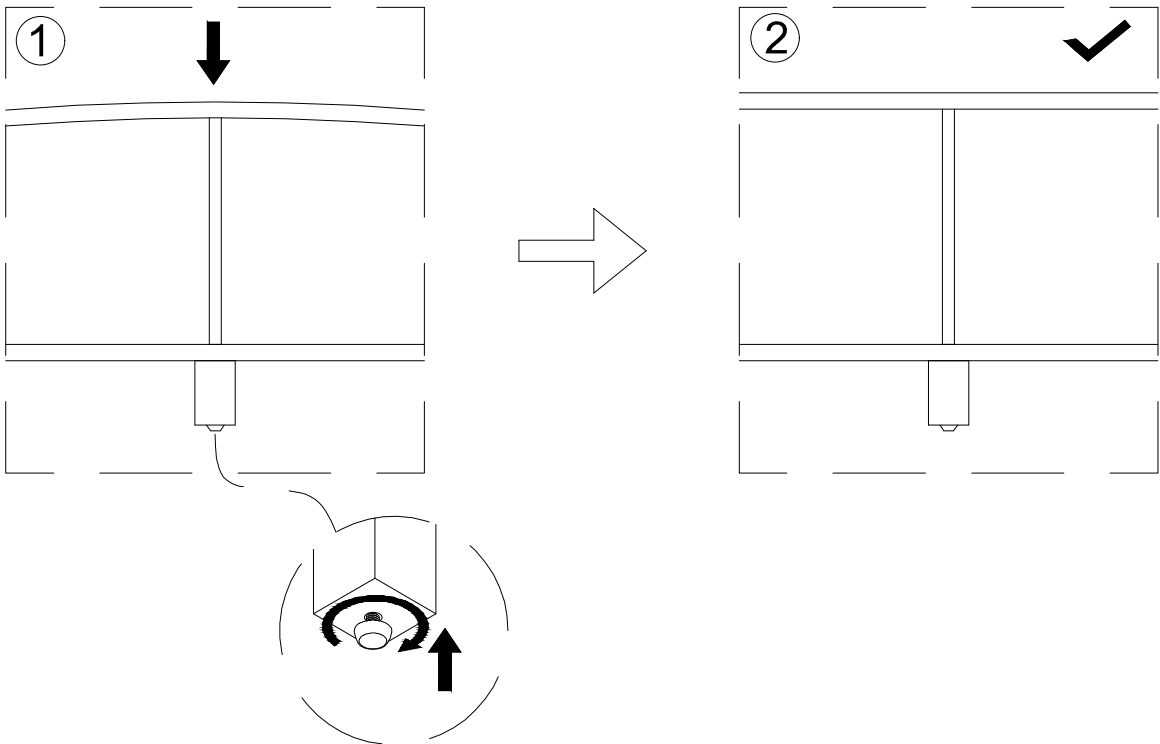
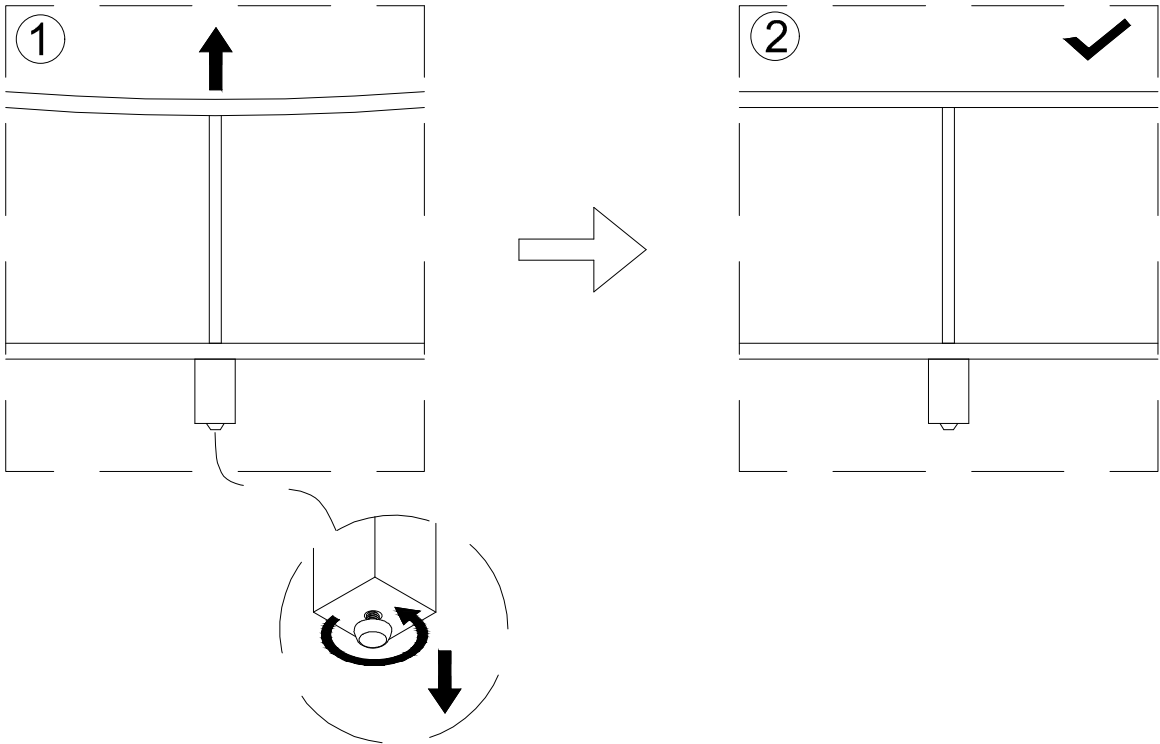


Assembly Instructions

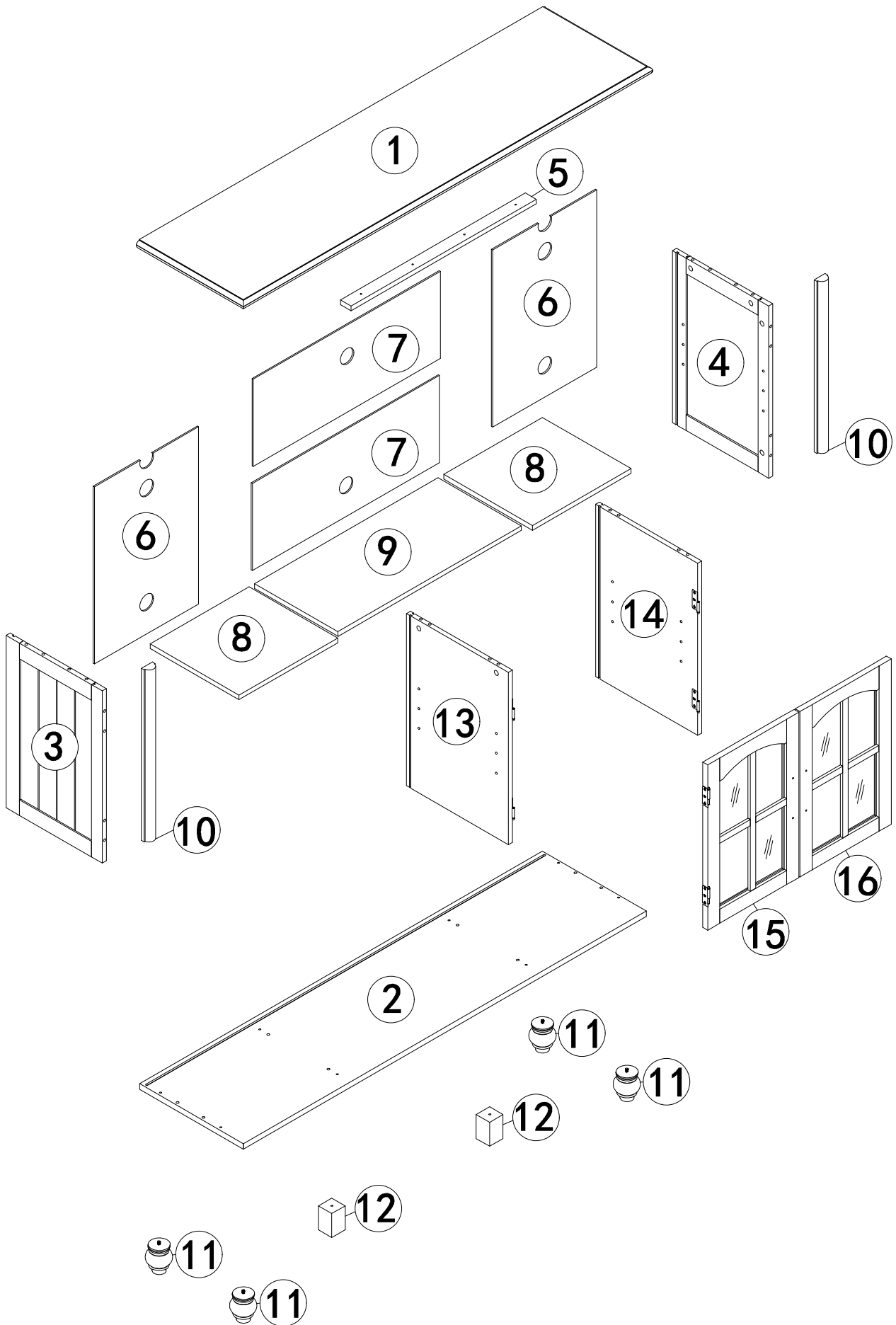


Instructions for use: The cabinet legs should be designed to avoid lateral stress. When moving, please lift vertically off the ground. Dragging may cause loose connectors, affecting stability and service life




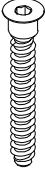

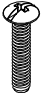
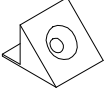
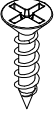
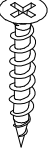
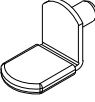

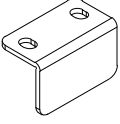
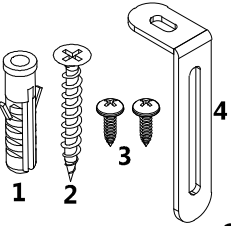
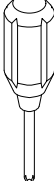

If the top Panel collapses or bends
Please adjust according to the following image



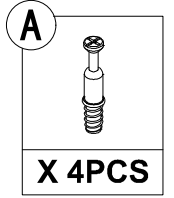
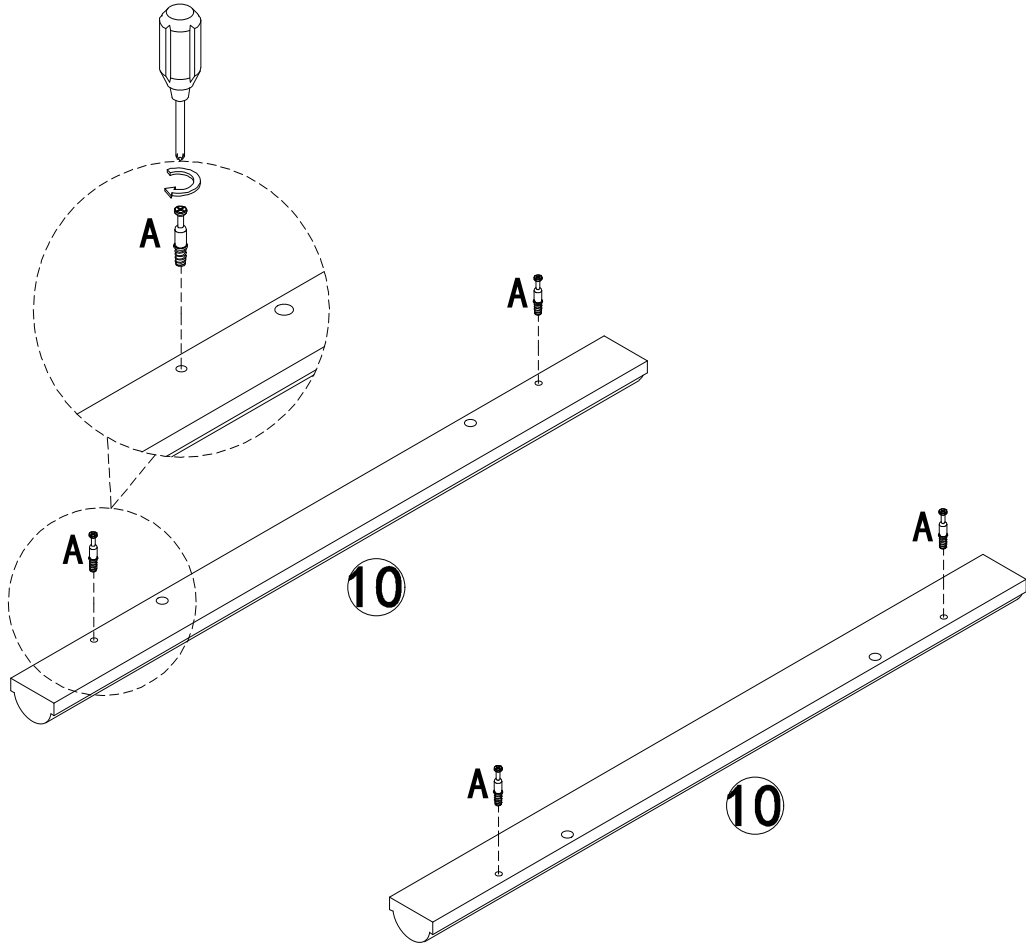
PART LIST



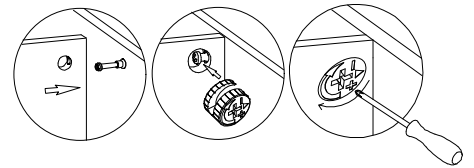
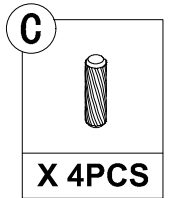
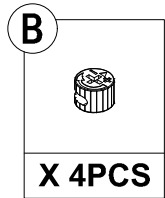
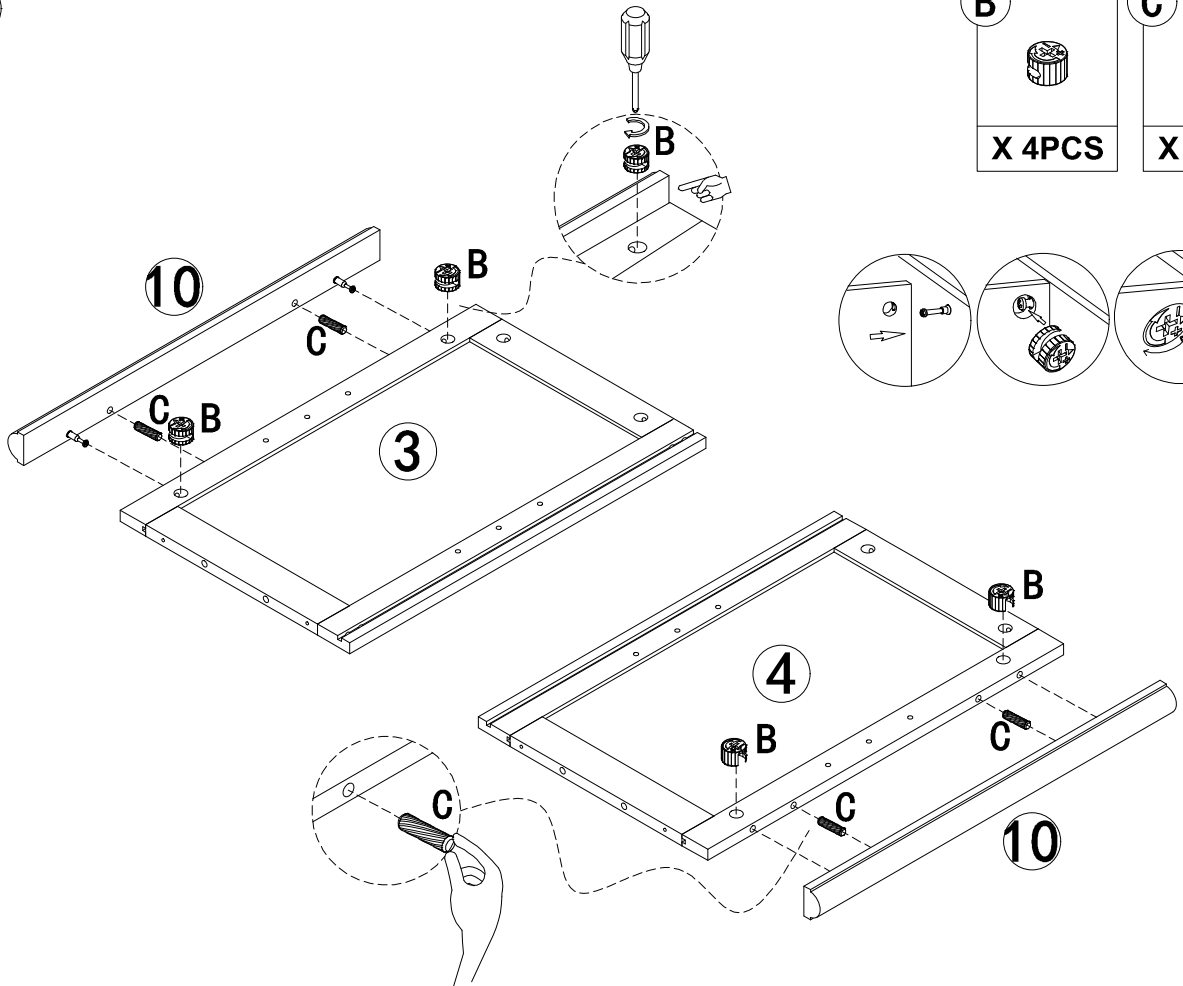
HARDWARE LIST

A  Ø6x35mm (12+1)PCS	B  Ø15x9.5mm (12+1)PCS	C  Ø8x30mm (20+2)PCS
D  Ø5x40mm 8PCS	E  2PCS	F  Ø4x22mm 4PCS
G  (16+2)PCS	H  Ø3x15mm (16+2)PCS	I  (4+1)PCS
J  (12+1)PCS	K  Ø3.5x14mm 4PCS	L  2PCS
M  2PCS	 1PC	 1PC

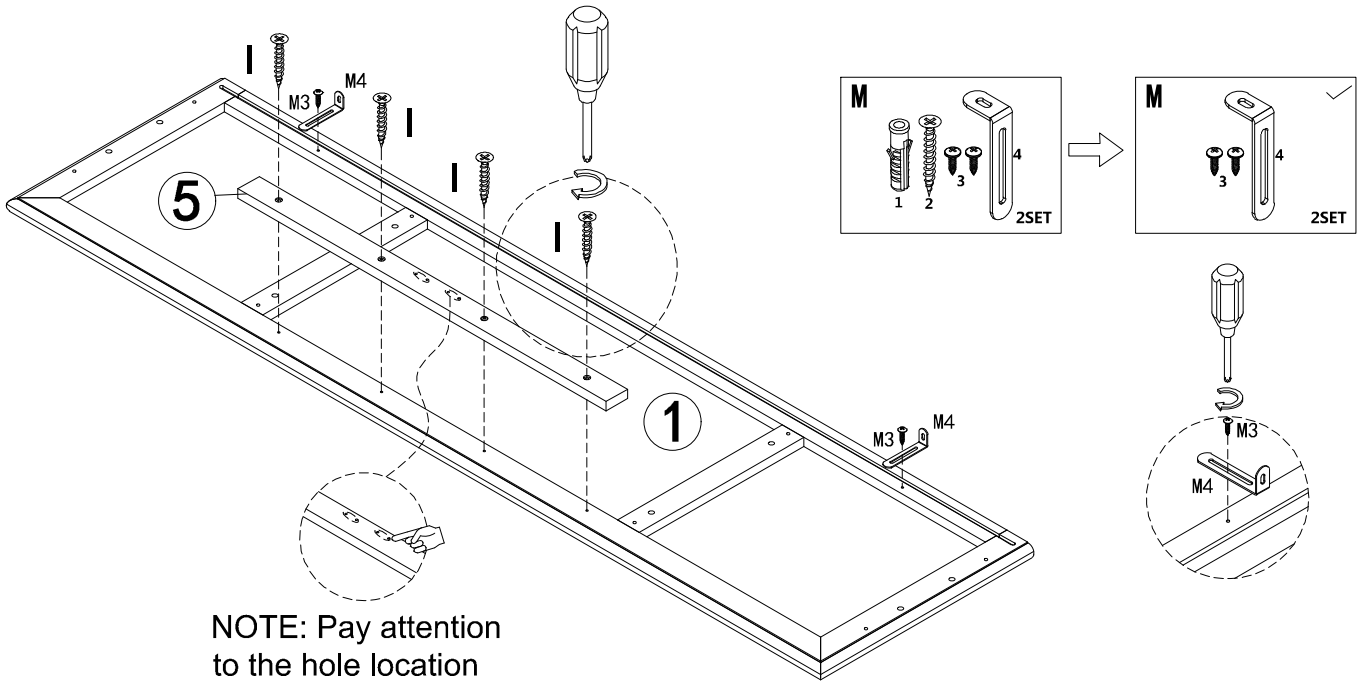
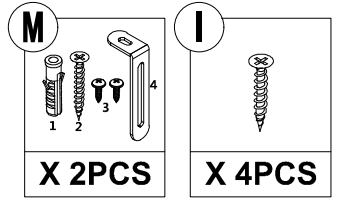
STEP 1



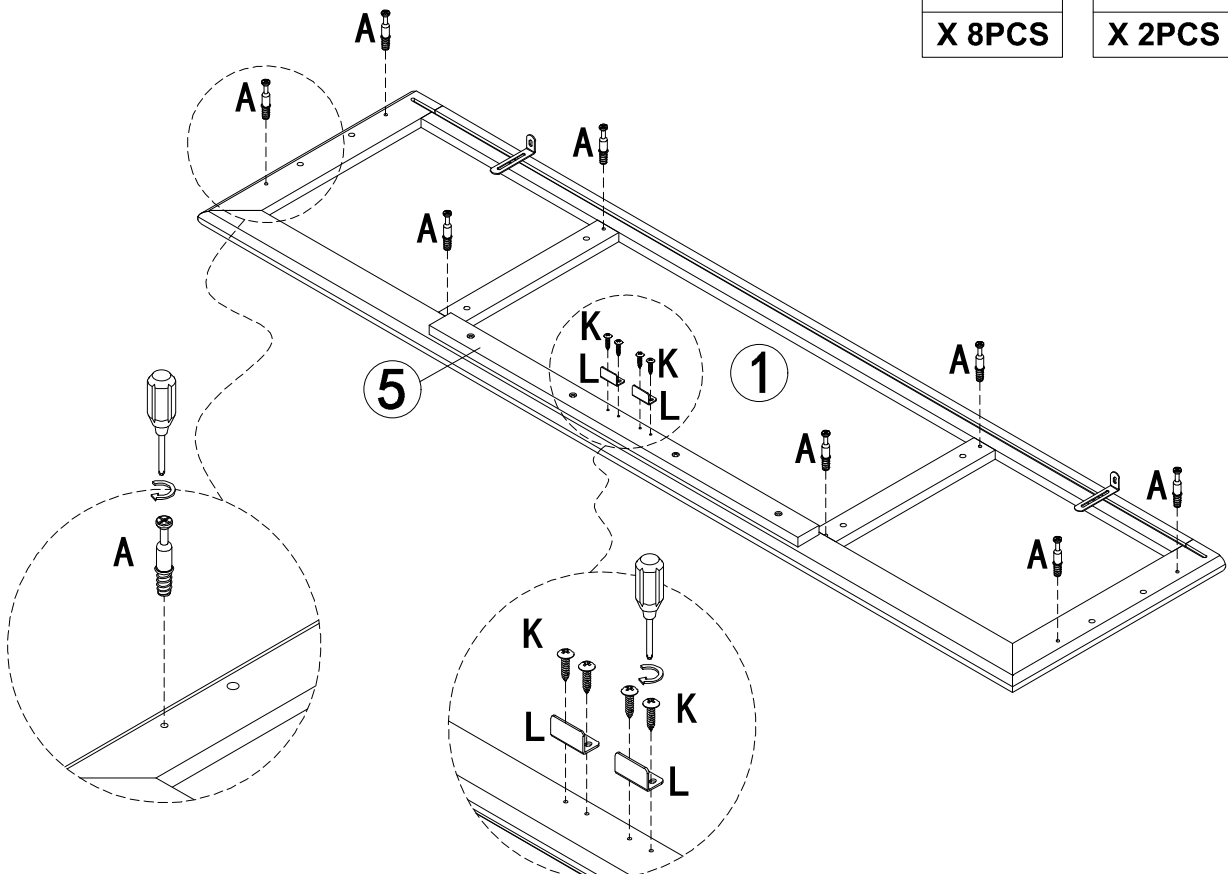
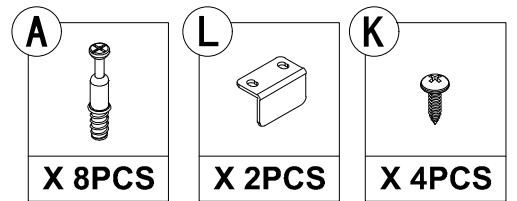
STEP 2





STEP 3

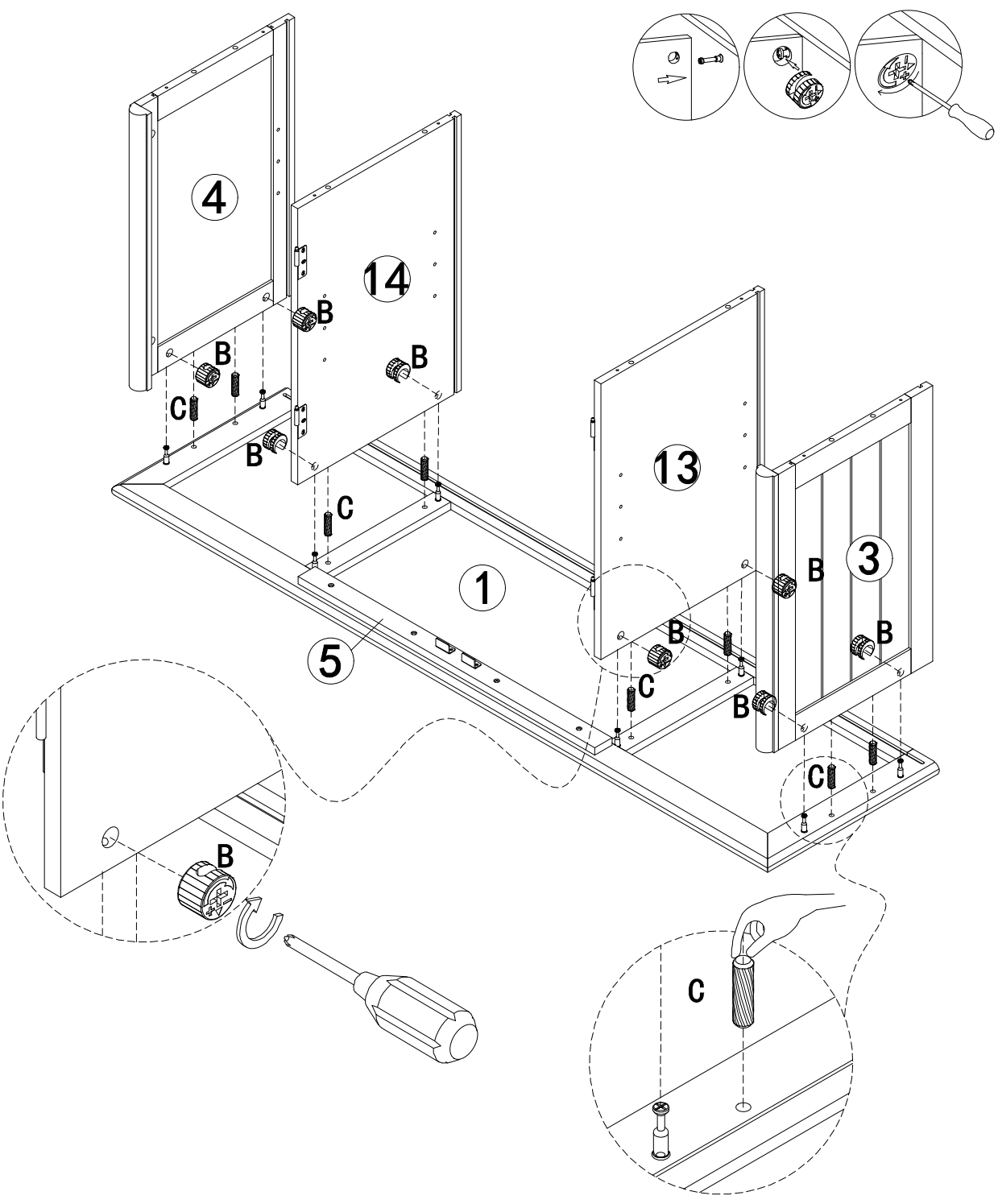


STEP 4

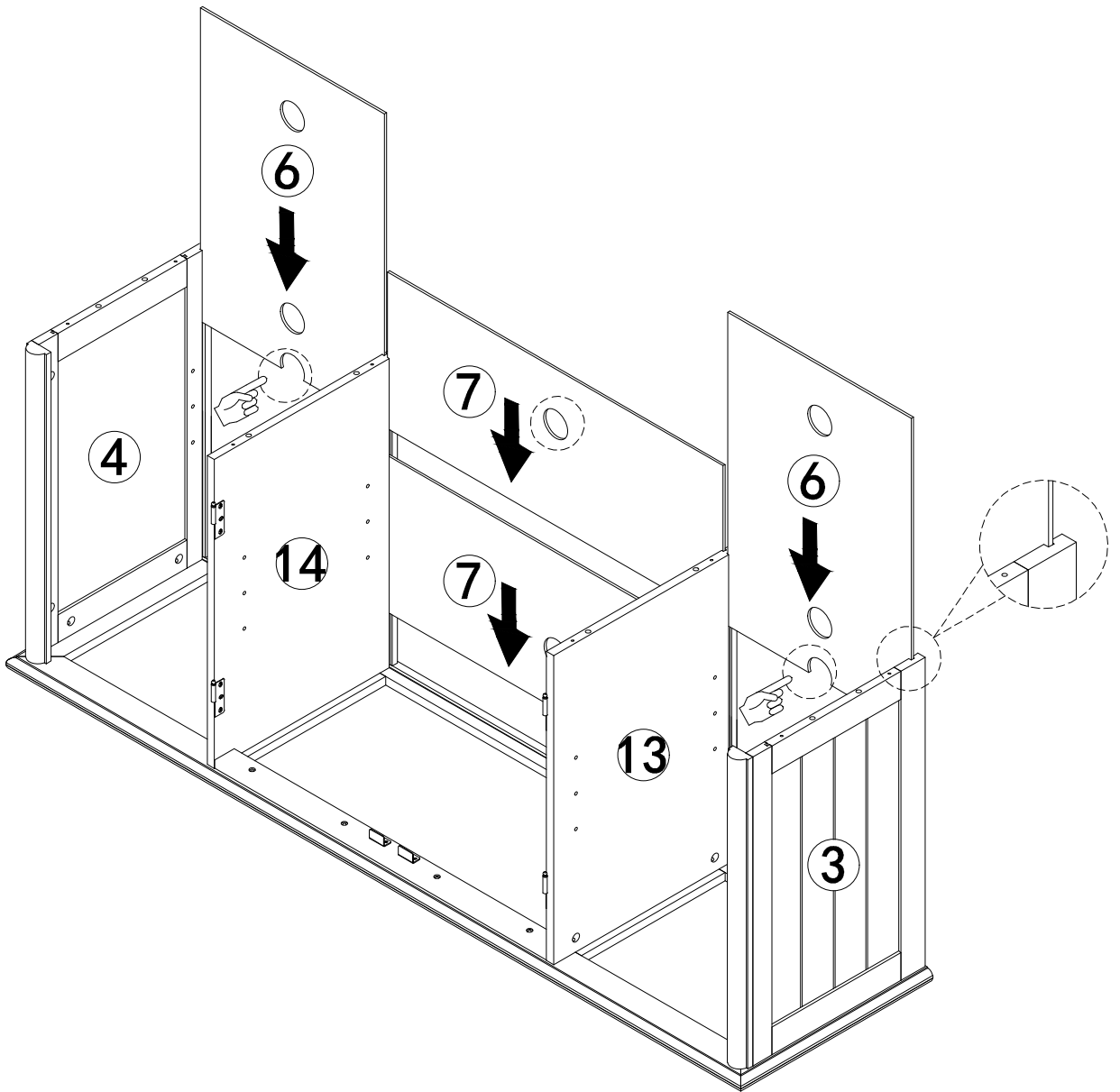


STEP 5

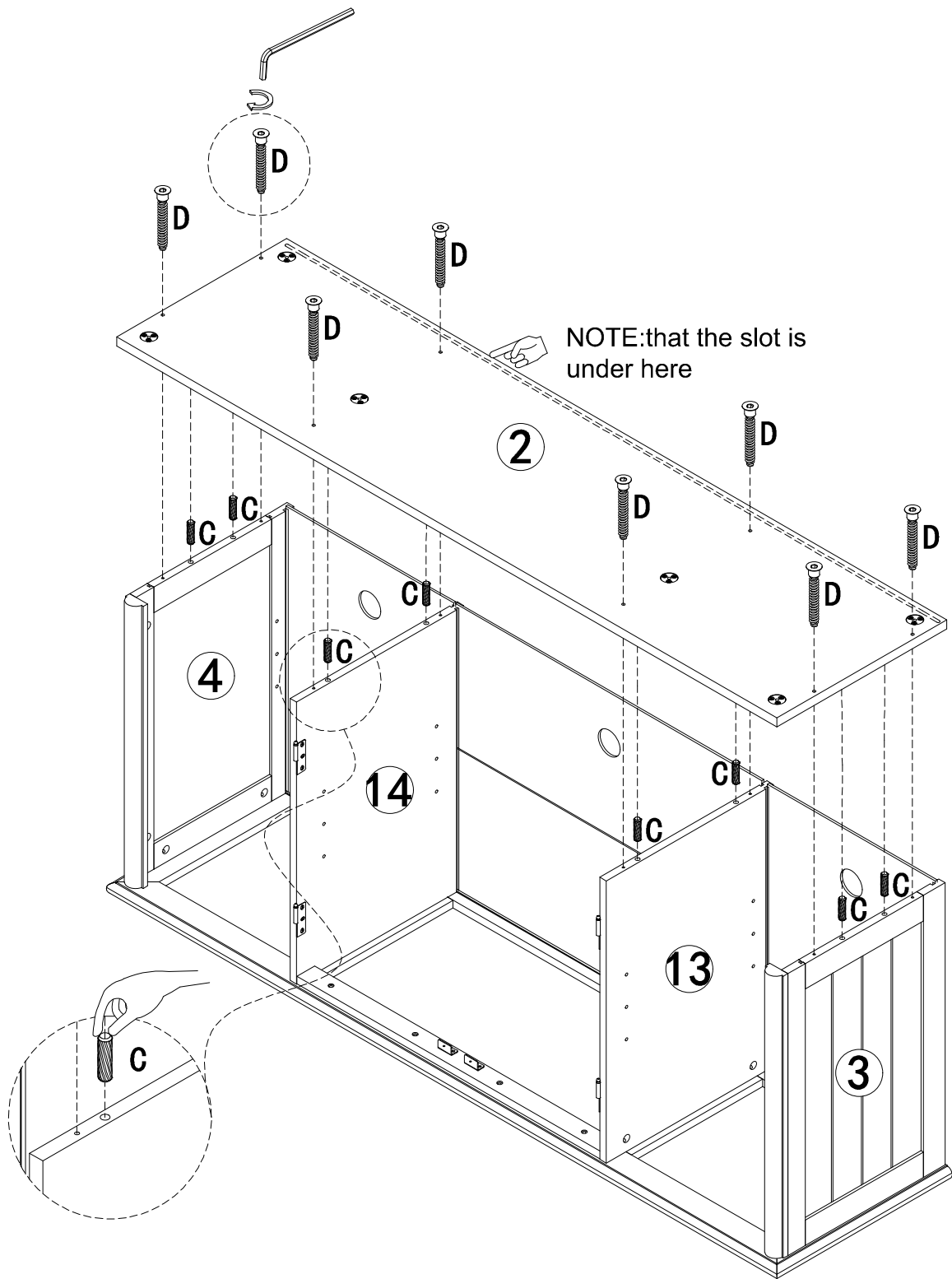
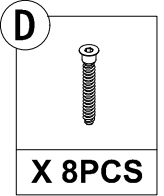
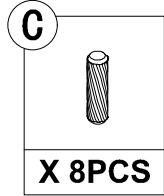
B 	C 
X 8PCS	X 8PCS



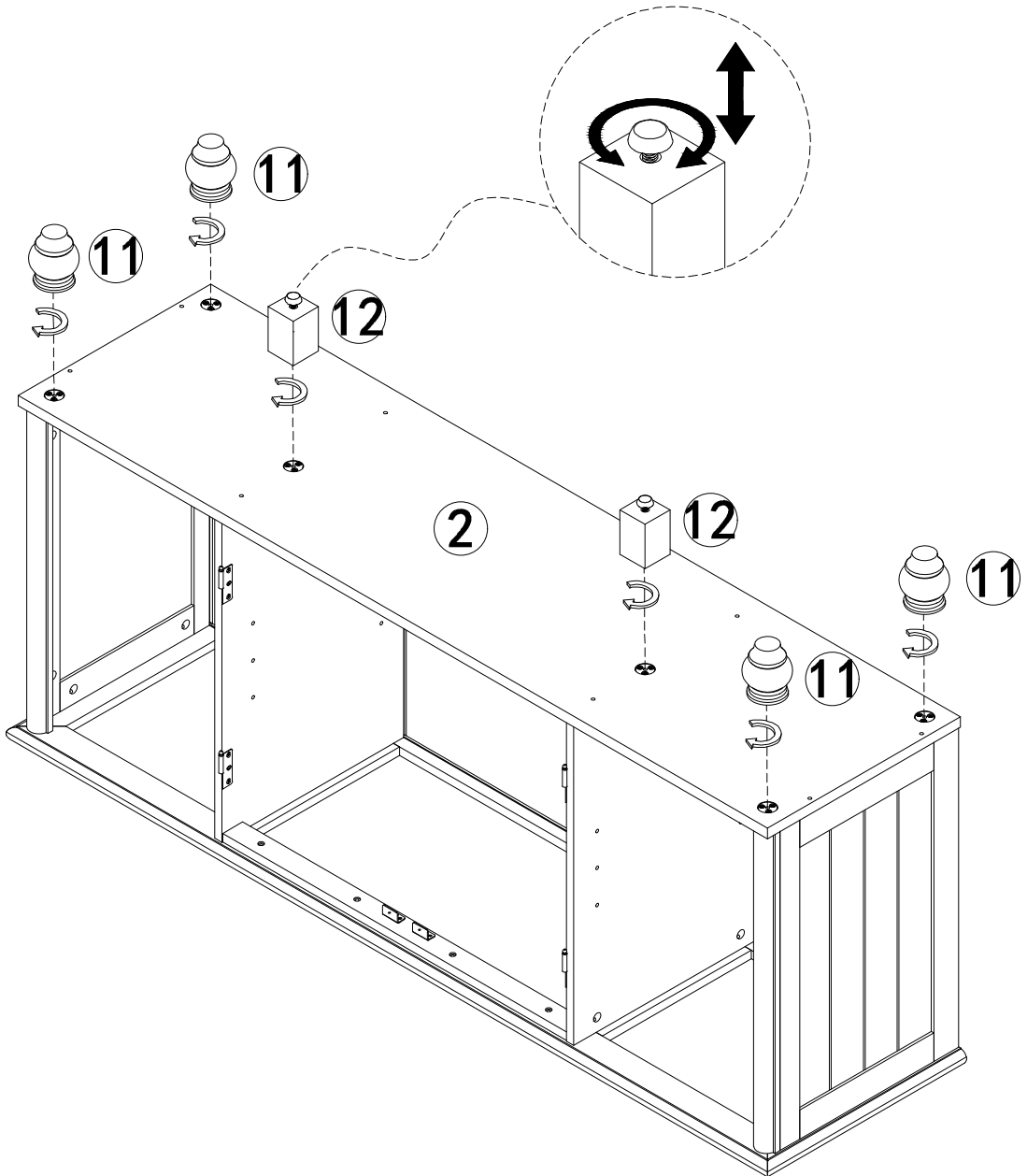
STEP 6



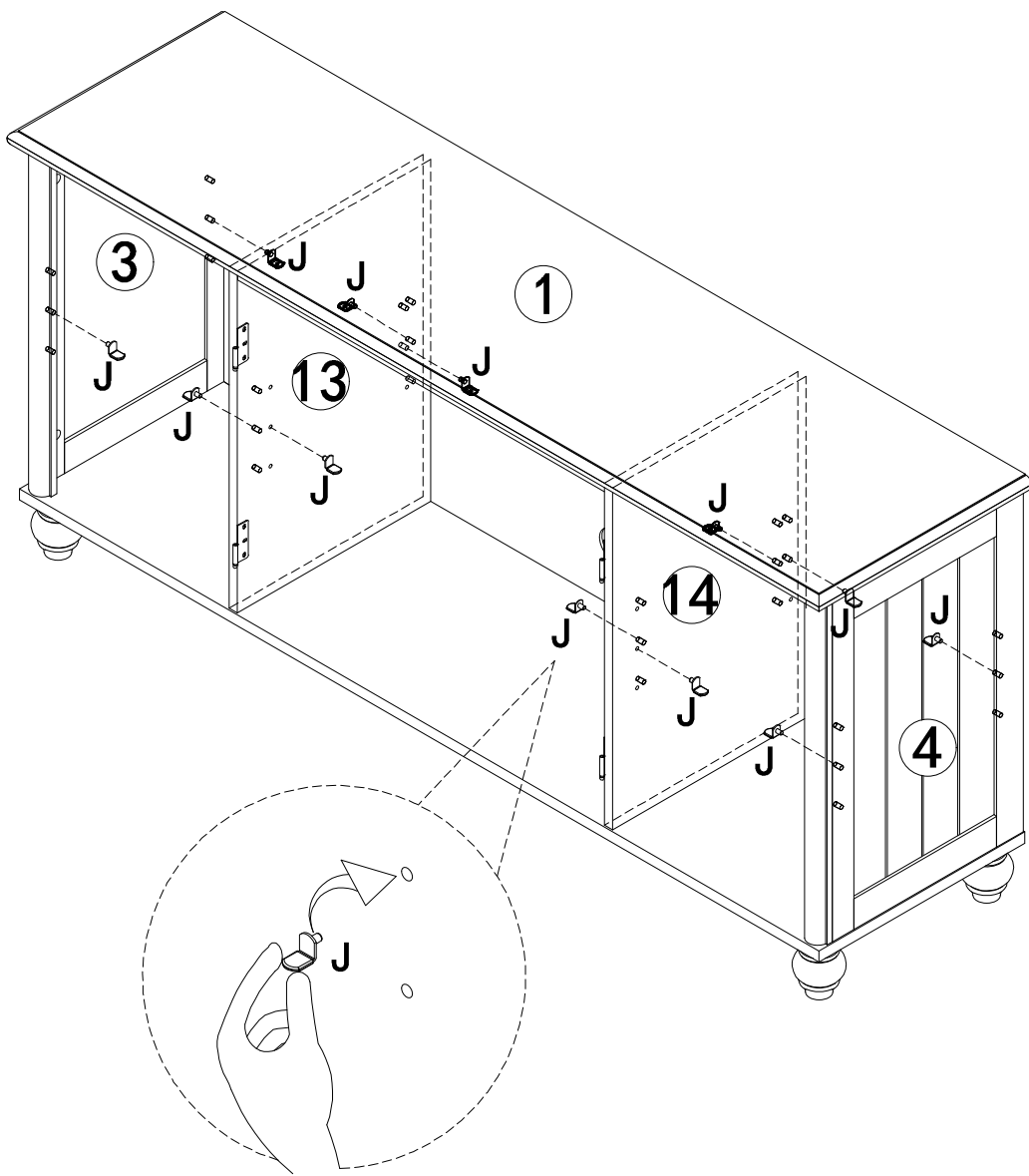
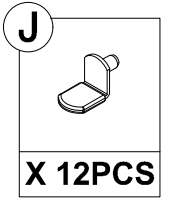
STEP 7



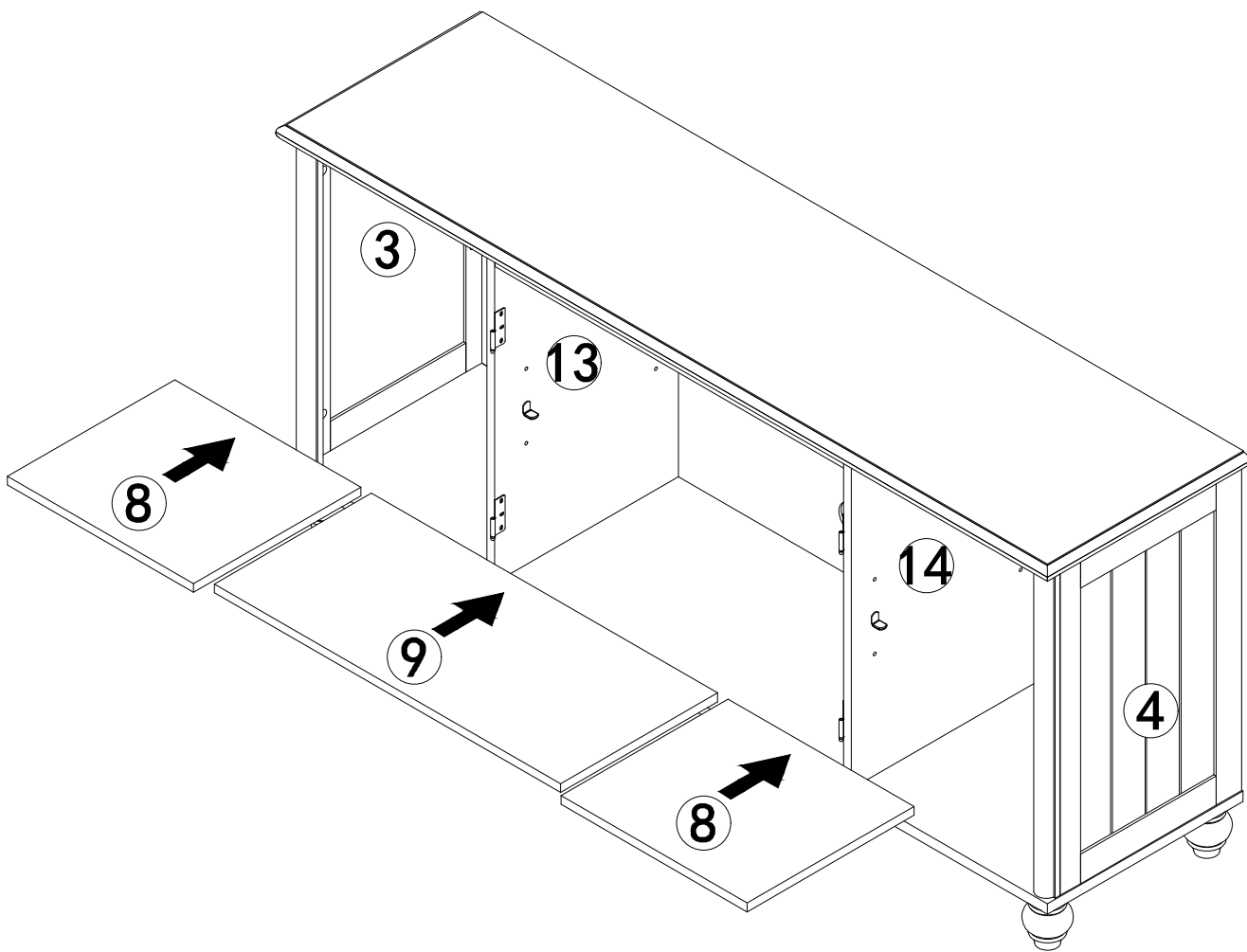
STEP 8



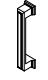

STEP 9

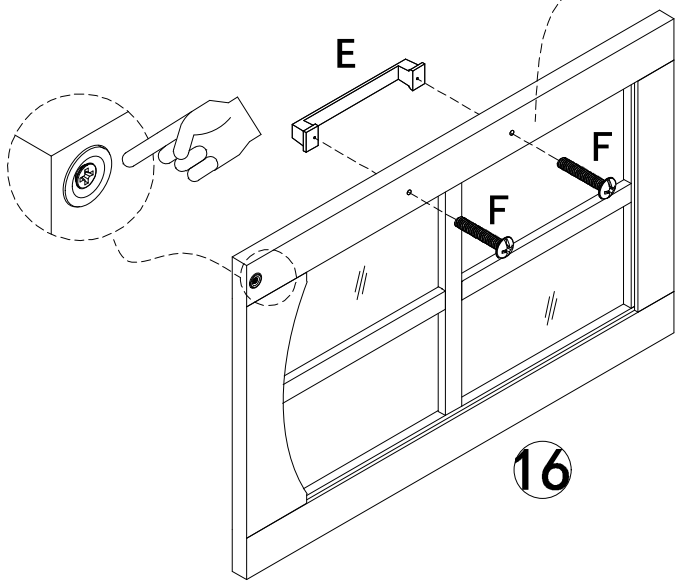
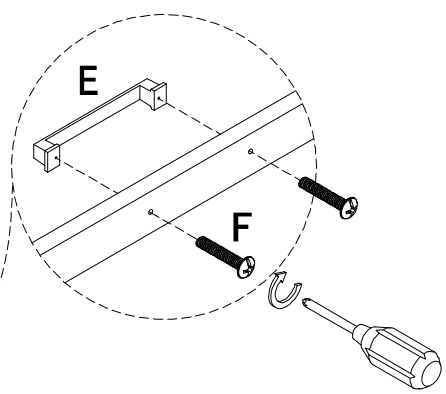
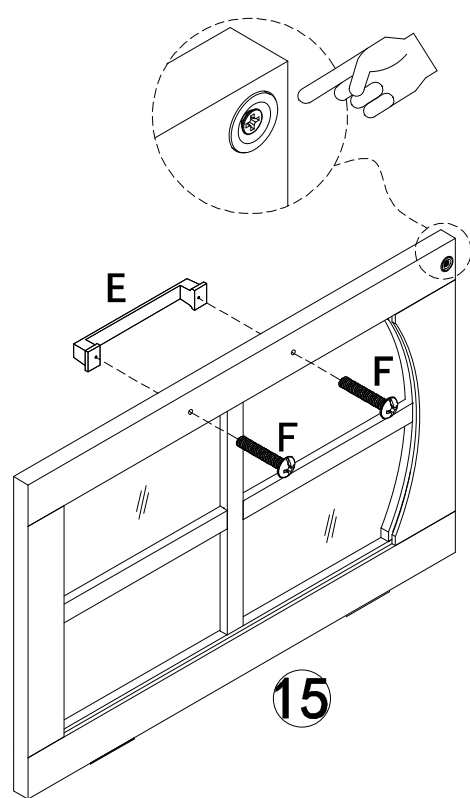


STEP 10

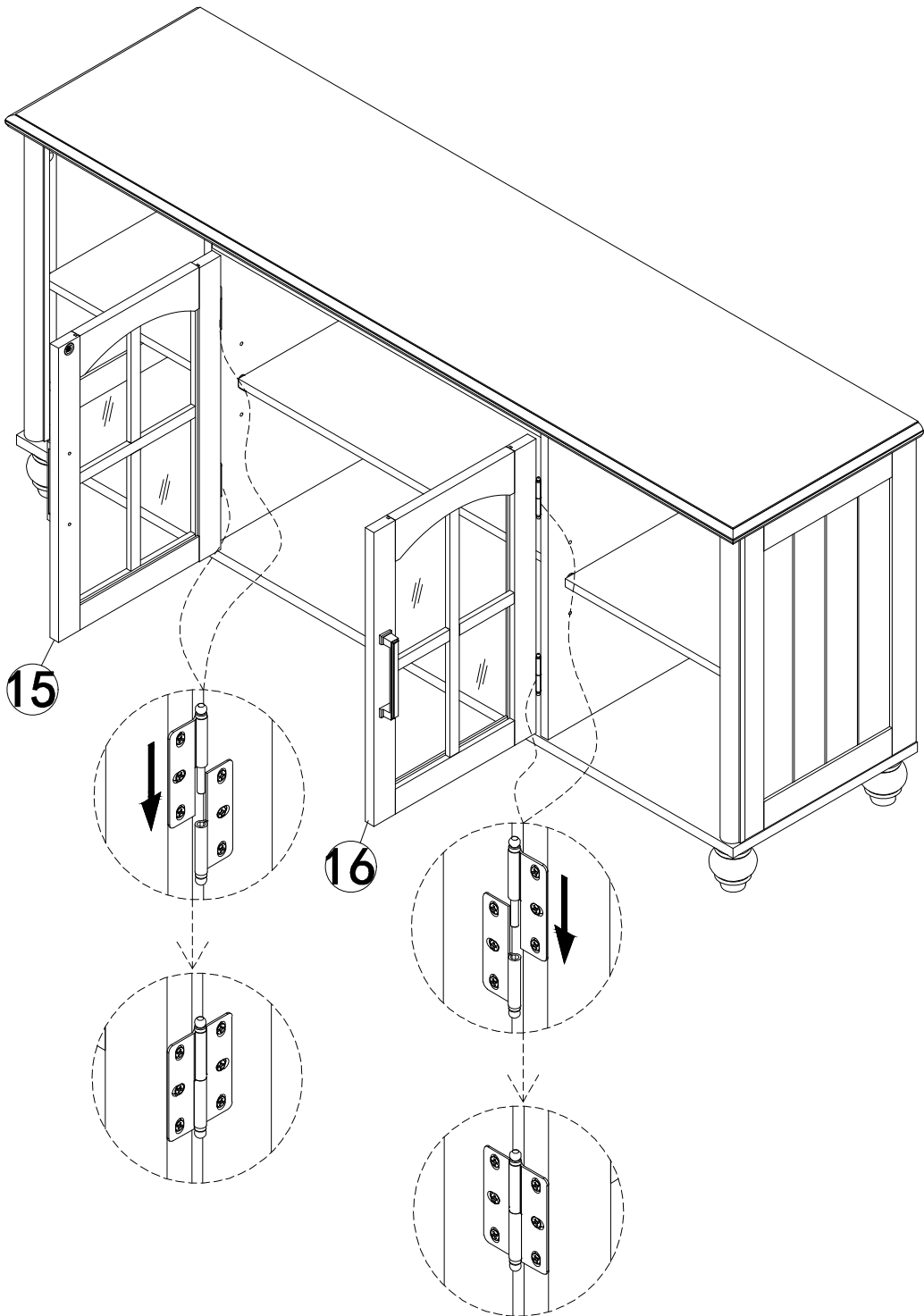


STEP 11

E		F	
X 2PCS		X 4PCS	

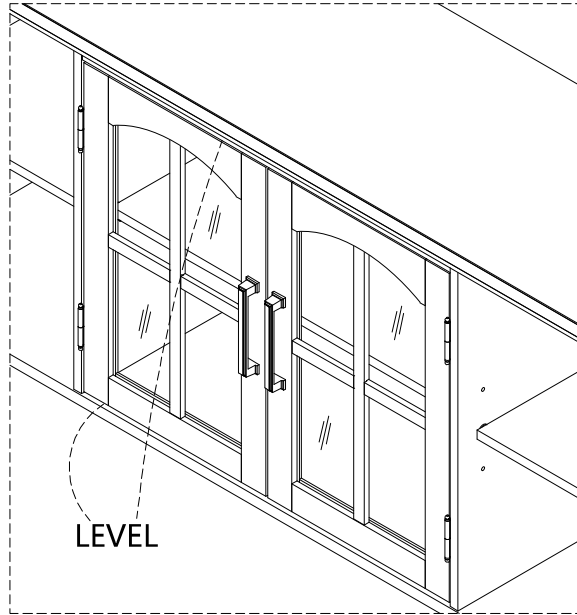
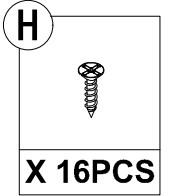
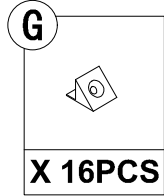


STEP 12



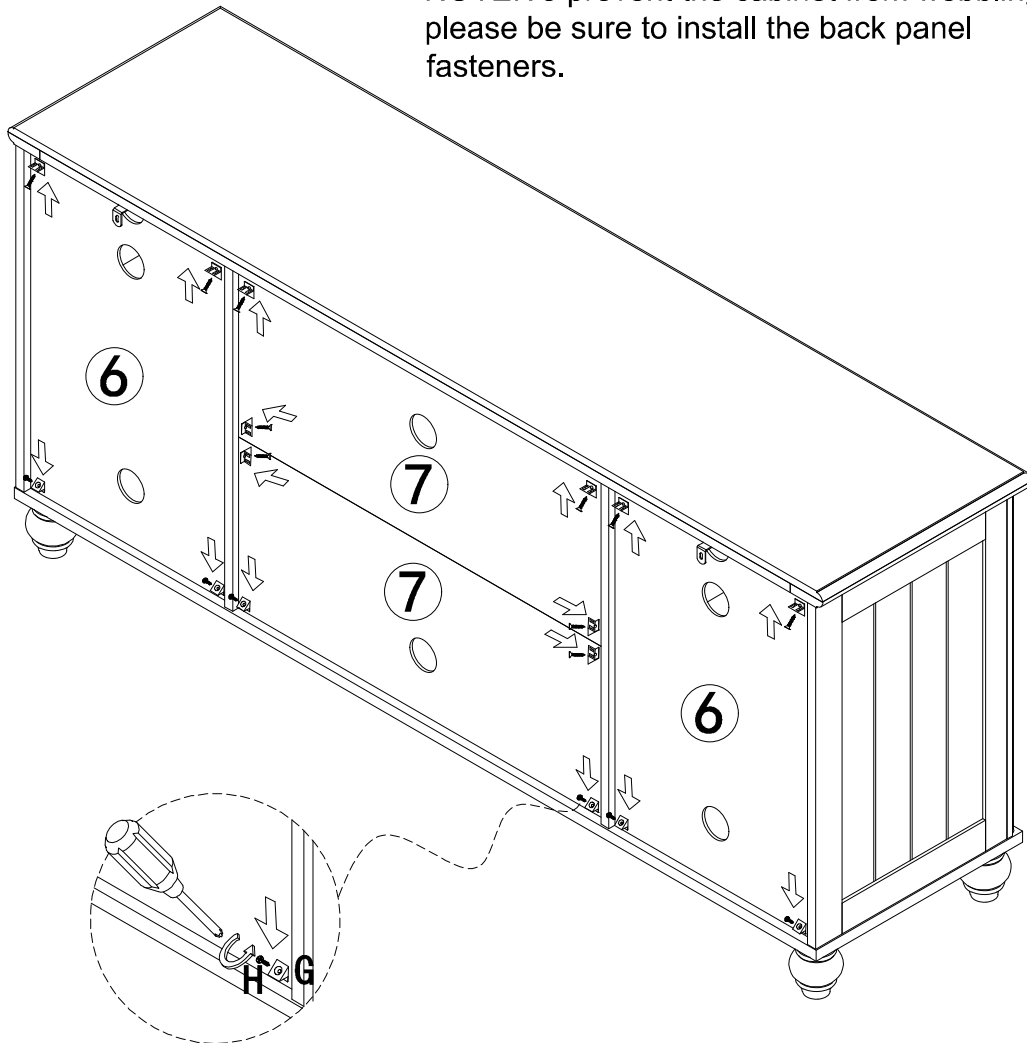
STEP 13

NOTE: If the gap at the bottom of the door is too small, please follow the steps below to adjust it.

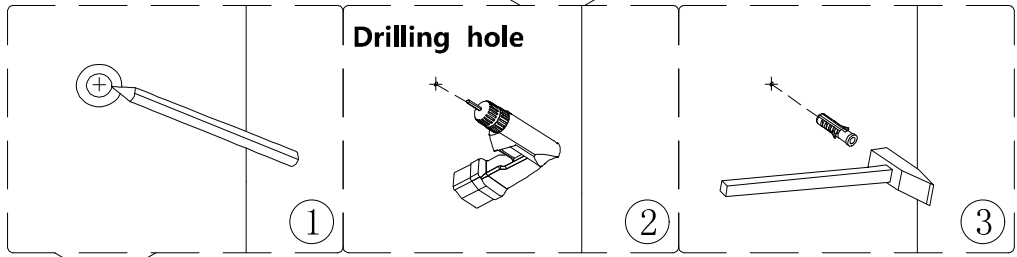


NOTE: Slightly shake the product left and right to make the upper and lower gaps of the door flush, then lock the back panel tightly.

NOTE: To prevent the cabinet from wobbling please be sure to install the back panel fasteners.



STEP 14



WALL

