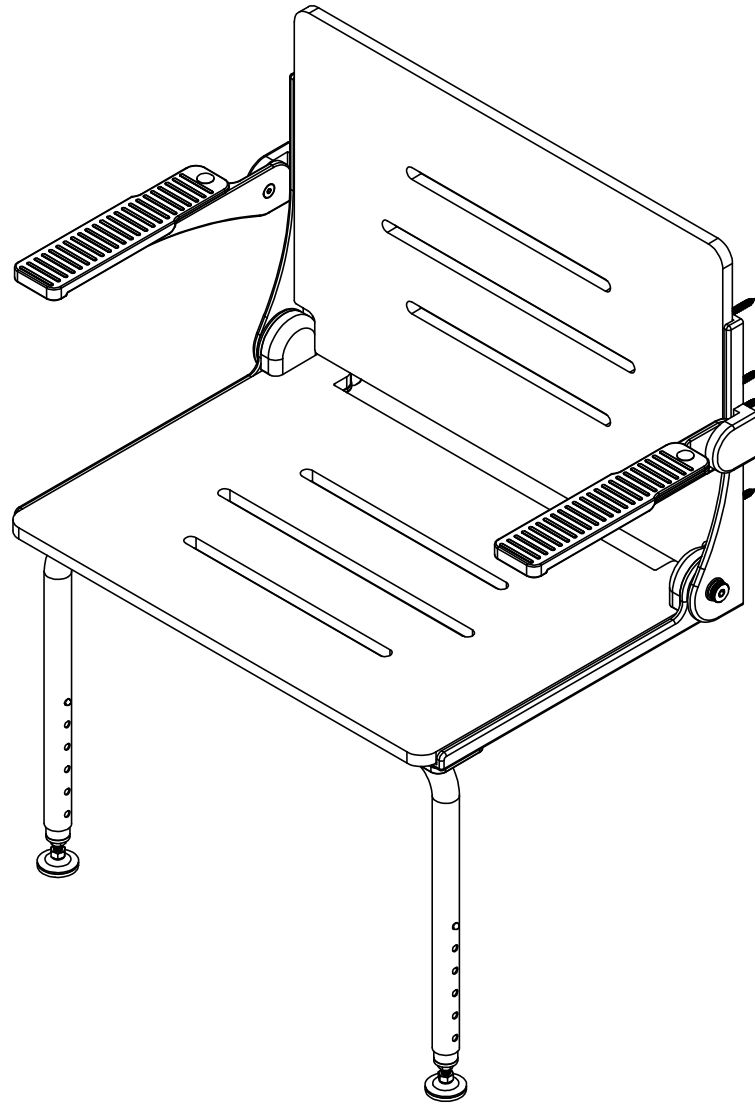


NOTES:

- PART GEOMETRY IS DEFINED BY CAD MODEL PROVIDED BY ENGINEERING.
- AESTHETIC DIMENSIONS SHALL NOT AFFECT FIT AND FUNCTION OF PART.
- DIMENSIONS IN BRACKETS [] ARE MILLIMETERS AND FOR REFERENCE ONLY.
- GRAIN DIRECTION PER ASME Y14.36M-1996 FOR SS SATIN FINISHES (180 GRIT) ONLY.
- MIRROR POLISH 600 GRIT FOR SS POLISH FINISHES ONLY.
- DO NOT POLISH THIS SURFACE.
- MASK THIS SURFACE PRIOR TO POWDER COAT.

**Proprietary & Confidential**

This drawing and the information contained herein is the property of Seachrome Corporation and shall not be reproduced, copied, or disclosed in whole or in part, or used in manufacturing, or for any other purpose without the written permission of Seachrome Corporation.

INTERPRET GEOMETRIC TOLERANCING PER: ASME Y14.5-2009
UNLESS OTHERWISE SPECIFIED:
DIMENSIONS ARE IN INCHES [MM]
TOLERANCES: DECIMALS

FRACTIONAL ± 1/64 .X ± 0.1
ANGLES ± 1° .XX ± 0.02
BEND ± 1° .XXX ± 0.005

☒ DENOTES CRITICAL DIMENSION
ALL THREADS ARE CRITICAL

REMOVE ALL BURRS & SHARP EDGES

MATERIAL

FINISH SEE NOTE

-----	-----
NEXT ASSY	USED ON

APPLICATION

DRAWN J. AMOZOC 8/13/19

CHECKED J. AMOZOC 8/13/19

ENG APPR. J. AMOZOC 8/13/19

MFG APPR. R. CANO XX-XX-XX

Q.A. XX-XX-XX

SEACHROME

1906 EAST DOMINGUEZ
LONG BEACH, CA 90810
(310) 427-8010

CORPORATION

TITLE:

**SILHOUETTE COMFORT PLUS
SHOWER SEAT**

DWG. NO.

SHAFB-240155

REV B

DO NOT SCALE DRAWING

SIZE **A**

SCALE: 1:24 SHEET 1 OF 3

ZONE	REV	ECN NO./DESCRIPTION	DATE	APPROVED
	B	WIDTH WAS 28.72 IS 27"	8/6/20	E.B.
	A	ADD ARM PADS	3/25/20	J.A.
-	-	RELEASED	8/3/19	J.A.

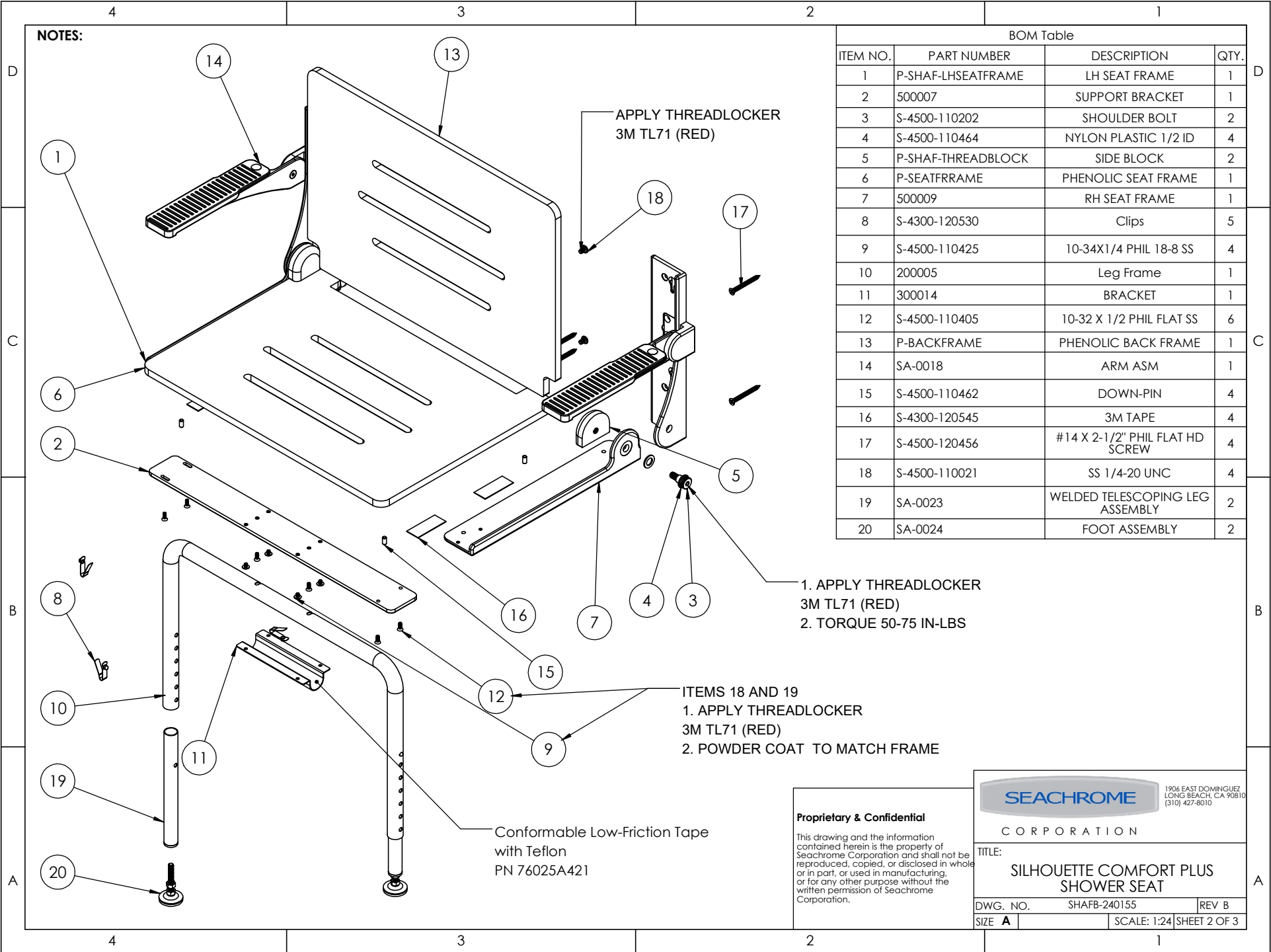
TESTING	-----
ASSEMBLY	-----
POLISHING	-----
MACHINING	-----
TOOLING FIXTURE #	-----

4

3

2

1



NOTES:

BOM Table

ITEM NO.	PART NUMBER	DESCRIPTION	QTY.
1	P-SHAF-LHSEATFRAME	LH SEAT FRAME	1
2	500007	SUPPORT BRACKET	1
3	S-4500-110202	SHOULDER BOLT	2
4	S-4500-110464	NYLON PLASTIC 1/2 ID	4
5	P-SHAF-THREADBLOCK	SIDE BLOCK	2
6	P-SEATFRFRAME	PHENOLIC SEAT FRAME	1
7	500009	RH SEAT FRAME	1
8	S-4300-120530	Clips	5
9	S-4500-110425	10-34X1/4 PHIL 18-8 SS	4
10	200005	Leg Frame	1
11	300014	BRACKET	1
12	S-4500-110405	10-32 X 1/2 PHIL FLAT SS	6
13	P-BACKFRAME	PHENOLIC BACK FRAME	1
14	SA-0018	ARM ASM	1
15	S-4500-110462	DOWN-PIN	4
16	S-4300-120545	3M TAPE	4
17	S-4500-120456	#14 X 2-1/2" PHIL FLAT HD SCREW	4
18	S-4500-110021	SS 1/4-20 UNC	4
19	SA-0023	WELDED TELESCOPING LEG ASSEMBLY	2
20	SA-0024	FOOT ASSEMBLY	2

1. APPLY THREADLOCKER 3M TL71 (RED)
2. TORQUE 50-75 IN-LBS

ITEMS 18 AND 19
1. APPLY THREADLOCKER 3M TL71 (RED)
2. POWDER COAT TO MATCH FRAME

Conformable Low-Friction Tape with Teflon
PN 76025A421

Proprietary & Confidential
This drawing and the information contained herein is the property of Seachrome Corporation and shall not be reproduced, copied, or disclosed in whole or in part, or used in manufacturing, or for any other purpose without the written permission of Seachrome Corporation.

SEACHROME CORPORATION
1906 EAST DOMINGUEZ, LONG BEACH, CA 90810 (310) 427-8010

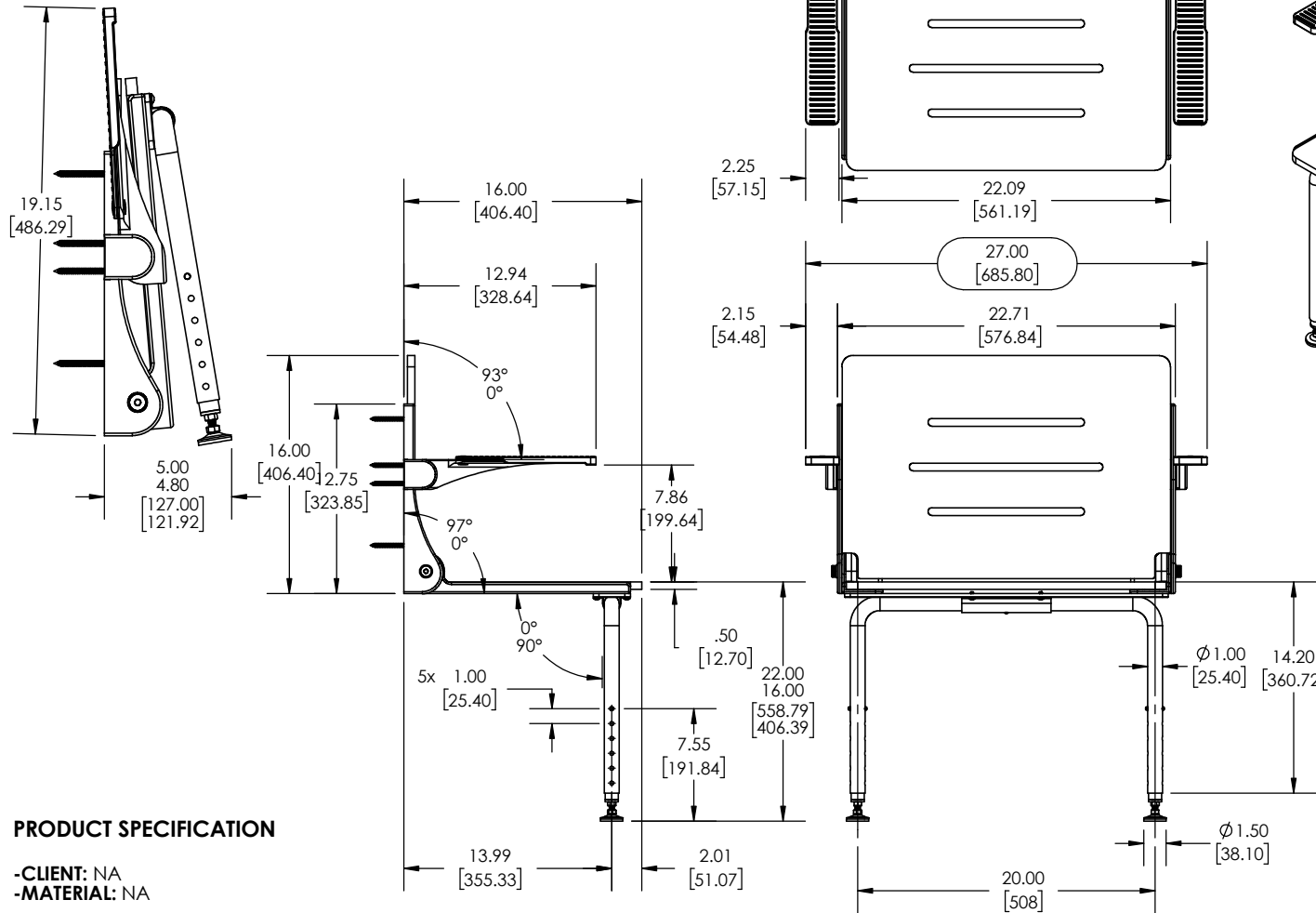
TITLE: **SILHOUETTE COMFORT PLUS SHOWER SEAT**

DWG. NO. SHAFB-240155 REV B
SIZE **A** SCALE: 1:24 SHEET 2 OF 3

NOTES:

1. DIMENSIONS IN BRACKETS [] ARE MILLIMETERS, FOR REFERENCE ONLY.
2. GRAIN DIRECTION PER ASME Y14.36M-1996 FOR SS SATIN FINISHES ONLY.

CUSTOMER SPECIFICATION DWG



PRODUCT SPECIFICATION

-CLIENT: NA
-MATERIAL: NA

-AVAILABLE FINISHES

-POWDER COAT

1. ALMOND
2. WHITE
3. MATTE BLACK
4. SILVER
5. REFERENCE PRICE BOOK FOR ADDITIONAL OPTIONS

-HARDWARE PACKAGE INCLUDES:

1. #14 X 2.5 PHIL FLAT "A" 18-8 SS PN (S-4500-120456 QTY 8)

Proprietary & Confidential

This drawing and the information contained herein is the property of Seachrome Corporation and shall not be reproduced, copied, or disclosed in whole or in part, or used in manufacturing, or for any other purpose without the written permission of Seachrome Corporation.

INTERPRET GEOMETRIC TOLERANCING PER: ASME Y14.5-2009
UNLESS OTHERWISE SPECIFIED:
DIMENSIONS ARE IN INCHES [MM]
TOLERANCES: DECIMALS
FRACTIONAL: ±1/64 .X ±0.1
ANGLES ± 1° .XX ±0.02

DRAWN J. AMOZOC 8/13/19
ENG APPR. J. AMOZOC 8/13/19

SEACHROME		1906 EAST DOMINGUEZ LONG BEACH, CA 90810 (310) 427-8010	
CORPORATION			
TITLE: SILHOUETTE COMFORT PLUS SHOWER SEAT			
DWG. NO.	SHAFB-240155	REV	B
SIZE	A	DO NOT SCALE DRAWING	SCALE: 1:12 SHEET 1