

# FORIOUS

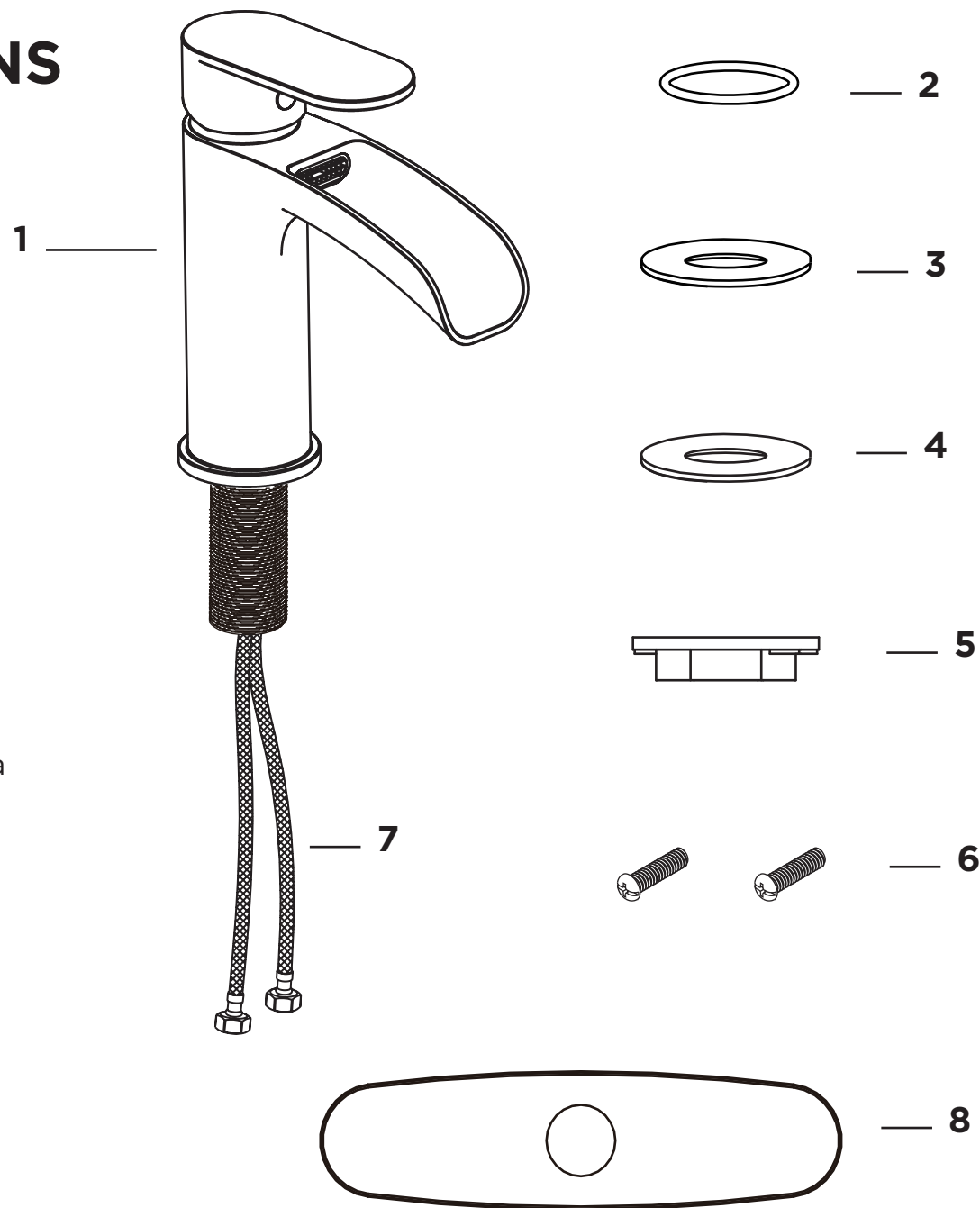
## INSTALLATION INSTRUCTIONS

### Included In the Package:

1. Bathroom Faucet
2. "O"-Ring
3. Rubber Gasket
4. Metal Gasket
5. Fixing Screw
6. Fixing Nut
7. Hot and Cold Water Supply Hoses
8. Deck Plate

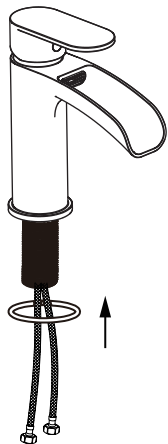
### Before Installation:

- Turn off the water supply valves. Clean the mounting area of the sink.
- Recommended width of mounting area is between 15cm-31cm (6"-12") measured between centers of outside mount holes.
- Diameter of mount holes must be 35mm (1.38").
- Max countertop thickness is 35mm (1.38")
- Water pressure Min 0.05MPa (7 psi) / Max 0.75MPa (109 psi)
- Water temp Min  $\geq 20^{\circ}\text{C}$  (68°F) / Max  $\leq 85^{\circ}\text{C}$  (185°F)

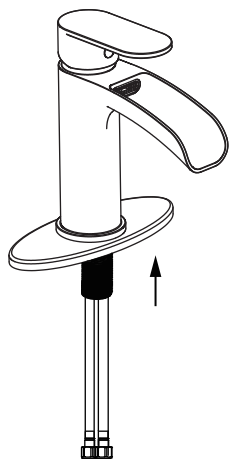


# Installation Steps:

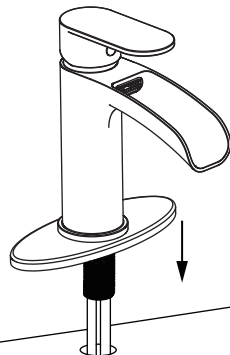
- 1.** Place the O-ring at the bottom of the faucet.



- 2.** Run the deck plate through the water inlet hose and place it at the bottom of the faucet body.  
(The deck plate installation is optional.)

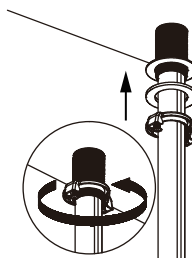


- 3.** Pass the water inlet hose of the faucet through the sink hole and place the faucet standing on the sink.

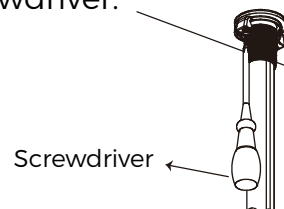


- 4.** Put the rubber gasket into the fixed screw.

- 5.** Put the metal gasket into the fixed screw.

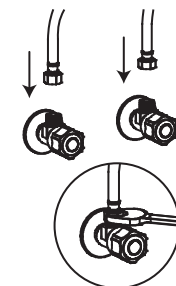


- 6.** Screw the fixing nut to the fixed screw and tighten it with a Screwdriver.



- 7.** Notice: Open the water valve at this time, to drain out the sewage in the water pipe for 15 seconds and then close it.

- 8.** Screw the water inlet hose nut onto the water valve and tighten it with a wrench. Finally, open the water valve and enjoy your waterfall. (If your valve thread doesn't match, please contact the seller to get the thread adapter.)



## Maintenance:

- Always operate the faucet gently to ensure years of use.
- To maintain the finish, always blot dry any water on the faucet surface. Clean with a damp non-abrasive sponge and wipe dry with a clean soft cloth.
- Although the finish is very durable, certain cleaners can damage it. DO NOT use detergent powder, polishing powder, a nylon brush, or anything that may scratch the finish.
- DO NOT use acidic cleaners on the faucet.
- If air temperature falls below freezing (0°C / 32°F), run the faucet to prevent freezing.
- Shut off water supply valve when not in use for long periods.
- We reserve the right to make revisions to product design without notice.