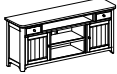

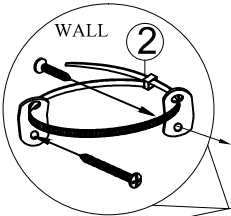


# ASSEMBLY INSTRUCTION

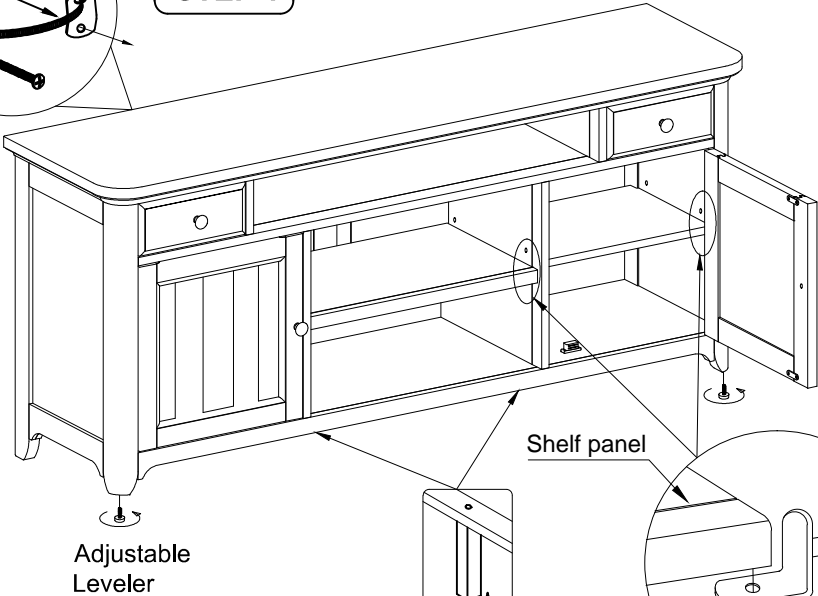
## ENTERTAINMENT TV Stand

Thank you for purchasing this quality product. Be sure to check all packing material carefully for small Hardware which may have come loose inside the carton during shipment. Identify and count all Hardware and compare with the Hardware List Below.

Parts List		
No.	Description	Qty.
①	Entertainment TV Stand 	1 Pc
②	Tipping Restraint 	1 Set



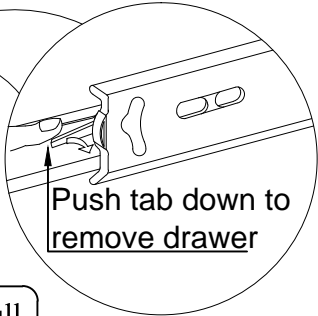
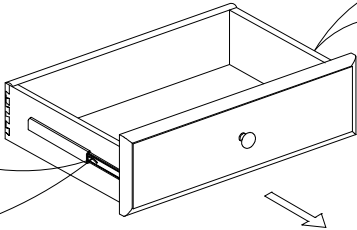
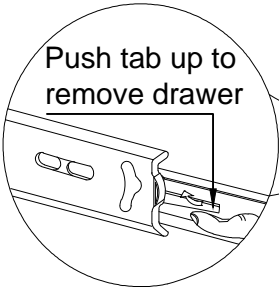
**STEP 1**



Center Leg

**STEP 2**

**STEP 3**



To remove drawer, simultaneously pull tab up on one side and push down on the other and remove drawer.