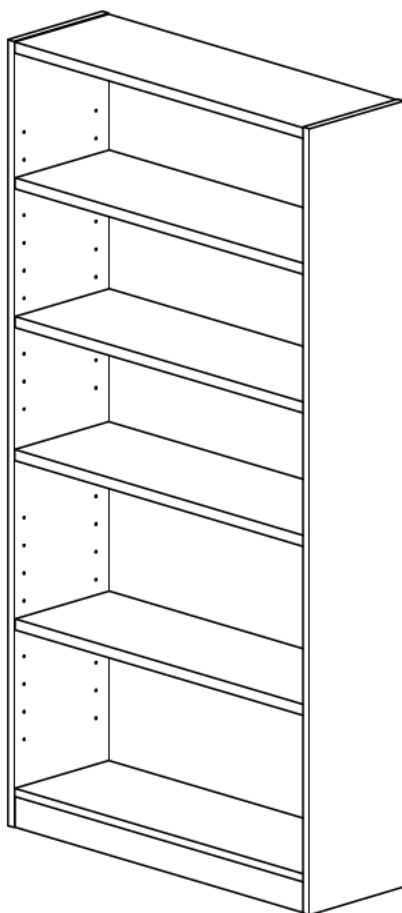


Assembly Guide



5 Shelf Bookcase



Get Ready to Assemble

For best results, keep these tips in mind:

- ① We know you want to finish this assembly as quickly as possible, but trust us: you'll have a better experience if you take it one step at a time.
- ② Give yourself some room to work near where you want the fully assembled product.
- ③ If your floor isn't carpeted, assemble this product on the empty carton to avoid scratching.
- ④ Do you have a friend who owes you a favor? Some steps may go a little easier with a second set of hands.

DOs

- ✔ Use a #2 Phillips head screwdriver (or other handheld tools as indicated)
- ✔ Wear safety glasses at all times during assembly
- ✔ Carefully follow the instructions in this guide and complete all steps in order
- ✔ Give us a call if you're having trouble with a particularly tricky step

DON'Ts

- ✘ We know power tools are quick and easy, but you shouldn't use them when assembling this product (unless otherwise specified)
- ✘ Never move your furniture with items inside or resting on the surface
- ✘ Do not attempt to use this product before all steps have been completed

IMPORTANT SAFETY INFORMATION



PLEASE READ WARNINGS

Improper use can cause safety hazards, or damage to your furniture and household items.

Warning	Do	Don't	Why it's important
Serious injury may occur.	<ul style="list-style-type: none">Assemble following all instructions using all indicated parts and hardware provided.Install tip-over restraint provided.Install every indicated nail and/or screw.Verify furniture is stable on it's own.Place heaviest items in the lower drawers or shelves.Remove items that might tempt kids to climb, such as toys and remote controls from the top and upper shelves of furniture.	<ul style="list-style-type: none">Do not move unit when loaded.Do not load with a television or other heavy equipment.Do not exceed the maximum load limits stated in the instructions.Do not allow children to stand, climb, or hang on furniture.	Improper assembly, use or loading can lead to product instability, tip-over or collapse.

Advertencia	Hacer	No	Por qué es importante
Se pueden producir lesiones graves.	<ul style="list-style-type: none">Ensamble siguiendo todas las instrucciones utilizando todas las piezas y ferretería indicados provistos.Instale la retracción de vuelco provista.Instale todos los clavos y / o tornillos indicados.Verifique que los muebles sean estables por sí mismos.Coloque los artículos más pesados en los cajones o estantes inferiores.Retire los artículos que puedan tentar a los niños a trepar, como juguetes y controles remotos de los estantes superiores y superiores de los muebles.	<ul style="list-style-type: none">No mueva la unidad cuando esté cargada.No cargue con un televisor u otro equipo pesado.No exceda los límites máximos de carga establecidos en las instrucciones.No permita que los niños se paren, trepen o cuelguen de muebles.	El ensamblaje, uso o carga inadecuados pueden provocar inestabilidad del producto, vuelco o colapso.

IMPORTANT SAFETY INFORMATION

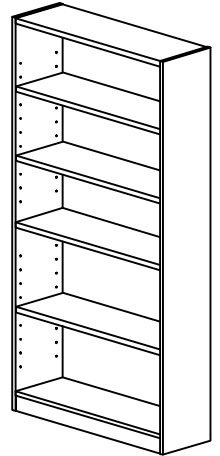
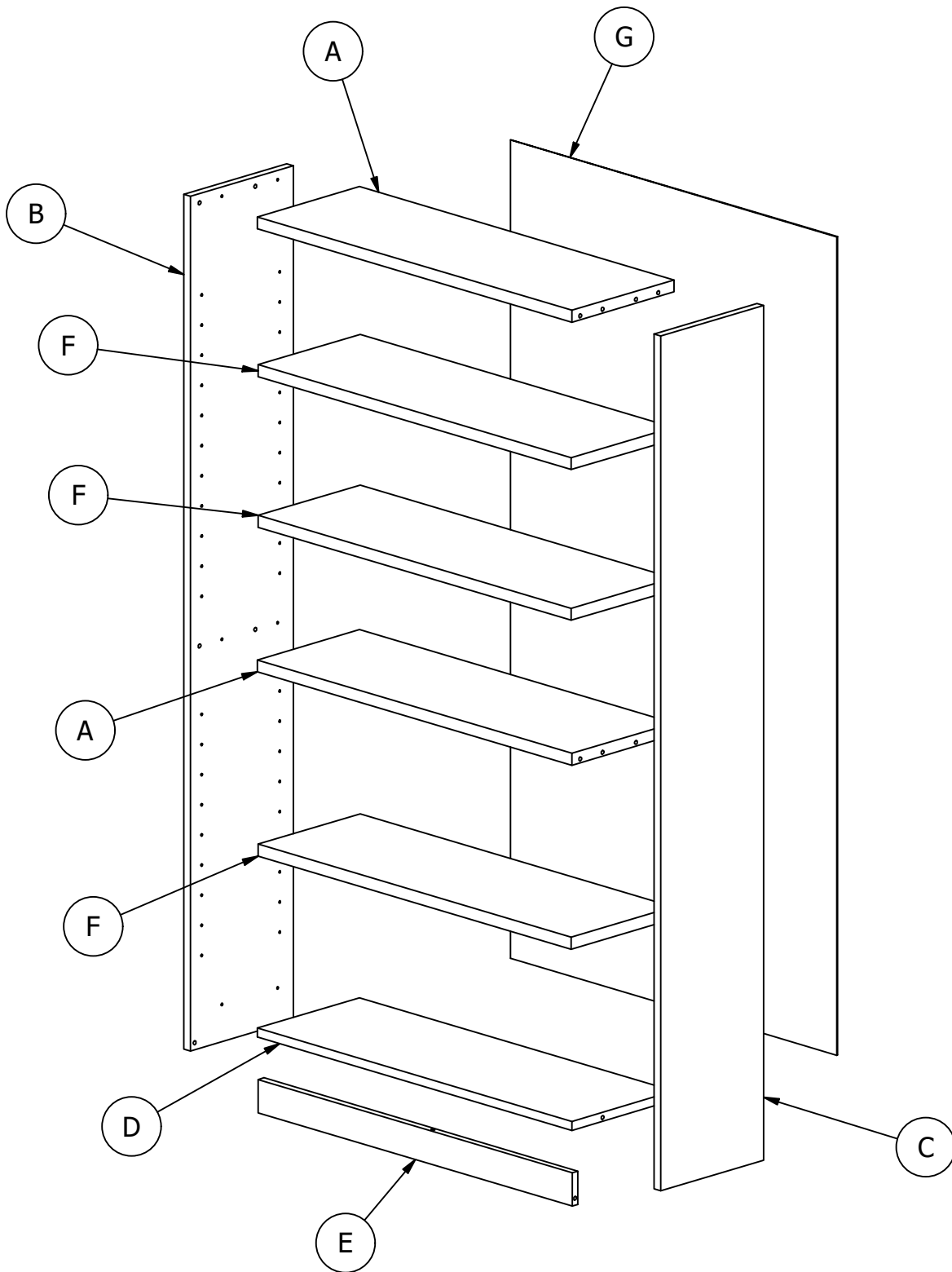


PLEASE READ WARNINGS

Improper use can cause safety hazards, or damage to your furniture and household items.

Avertissement	Faire	Ne le fais pas	Pourquoi c'est important
Des blessures graves peuvent survenir.	<ul style="list-style-type: none">• Assemblez en suivant toutes les instructions en utilisant toutes les pièces et le matériel indiqués fournis.• Installez la réintégration de basculement fournie• Installez tous les clous et / ou vis indiqués.• Vérifiez que les meubles sont stables par eux-mêmes.• Placez les articles les plus lourds dans les tiroirs ou les étagères inférieurs.• Retirez les objets qui pourraient inciter les enfants à grimper, comme les jouets et les télécommandes des étagères supérieure et supérieure des meubles.	<ul style="list-style-type: none">• Ne déplacez pas l'unité lorsqu'elle est chargée.• Ne chargez pas avec un téléviseur ou un autre équipement lourd.• Ne dépassez pas les limites de charge maximale indiquées dans les instructions.• Ne laissez pas les enfants se tenir debout, grimper ou s'accrocher aux meubles.	Un assemblage, une utilisation ou un chargement incorrects peuvent entraîner une instabilité du produit, un renversement ou un effondrement.

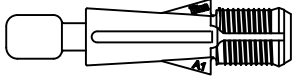
Get to know your Boards



Get to know your Fasteners

Fasteners are shown actual size.

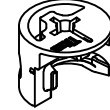
H171556



[1]

Quickfit TL4

H181468US



[13]

KD Cam3000

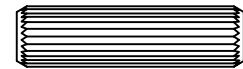
H72988



[12]

KD Bolt

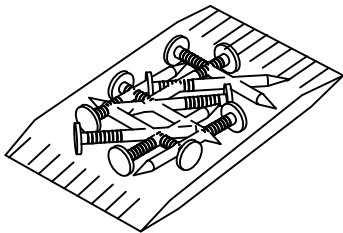
H38169



[10]

Wood Dowel 8 x 30

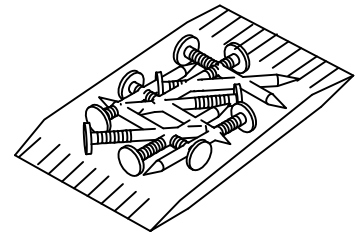
Q75494



[1]

Nail Bag (10)

Q85389



[2]

Nail Bag (20)

Get to know your Hardware

Hardware not to scale.

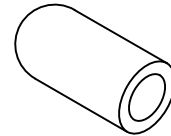
H23604



Shelf Pin

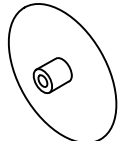
[12]

H126396



Shelf Pin Sleeve

[12]



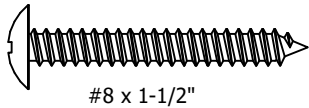
Cover Cap

[8]

TIPOVER RESTRAINT HARDWARE

SUGERENCIA SOBRE HARDWARE DE RETENCIÓN
MATÉRIEL DE RETENUE SUR LE SUPPORT

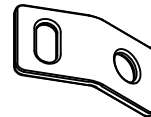
H107572



#8 x 1-1/2"

[1]

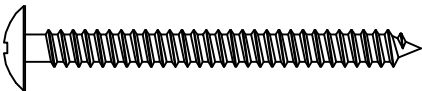
H181412



Connecting Plate

[2]

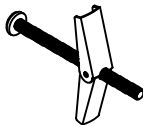
H181434



#10 x 2"

[1]

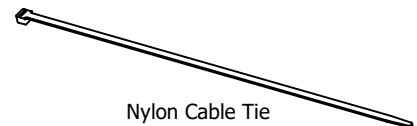
H181419



Toggle Bolt

[1]

H181411



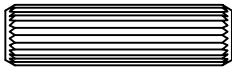
Nylon Cable Tie

[1]

STEP 1

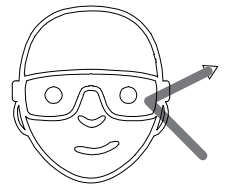
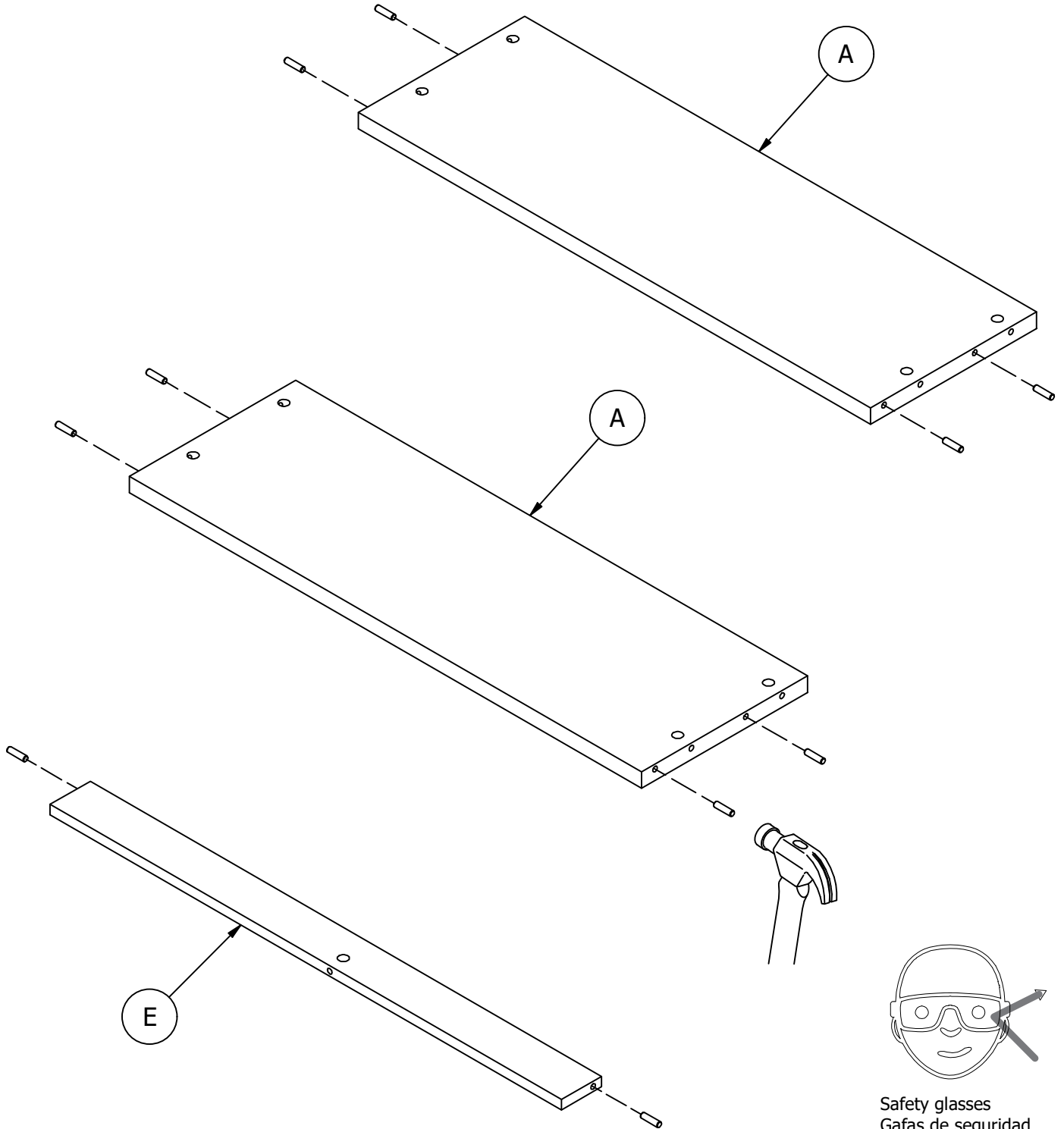
Prepare Panels

H38169



Wood Dowel 8 x 30

[10]



Safety glasses
Gafas de seguridad
Lunettes de protection

STEP 2

Assemble Panels

H181468US



[1]

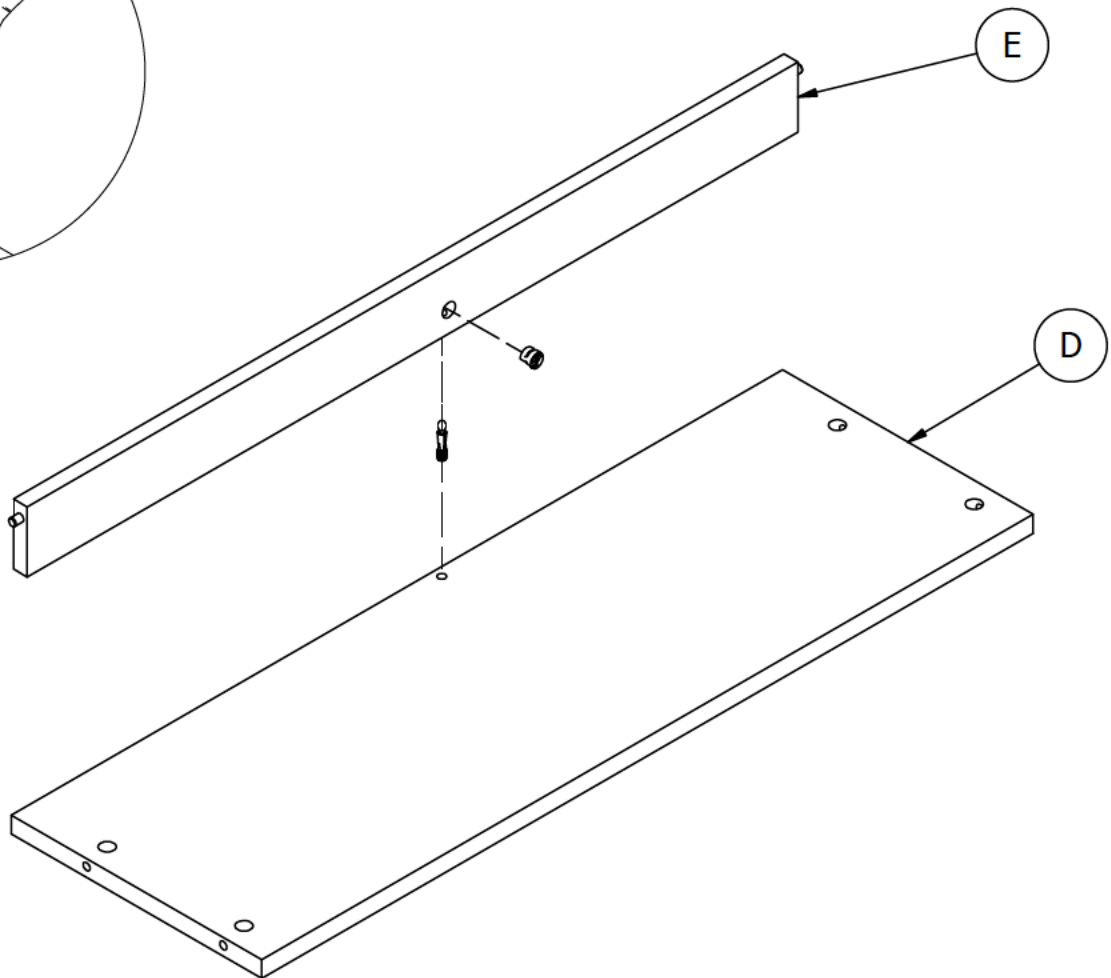
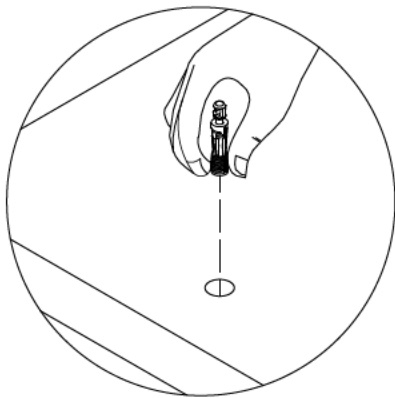
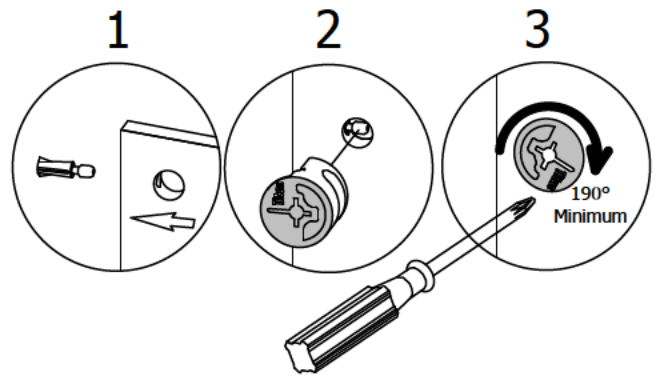
KD Cam3000

H171556



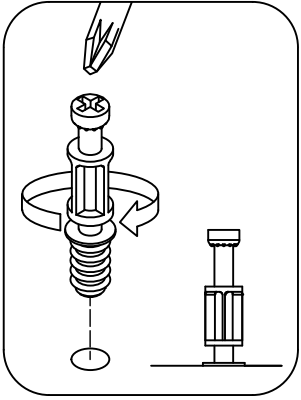
[1]

Quickfit TL4

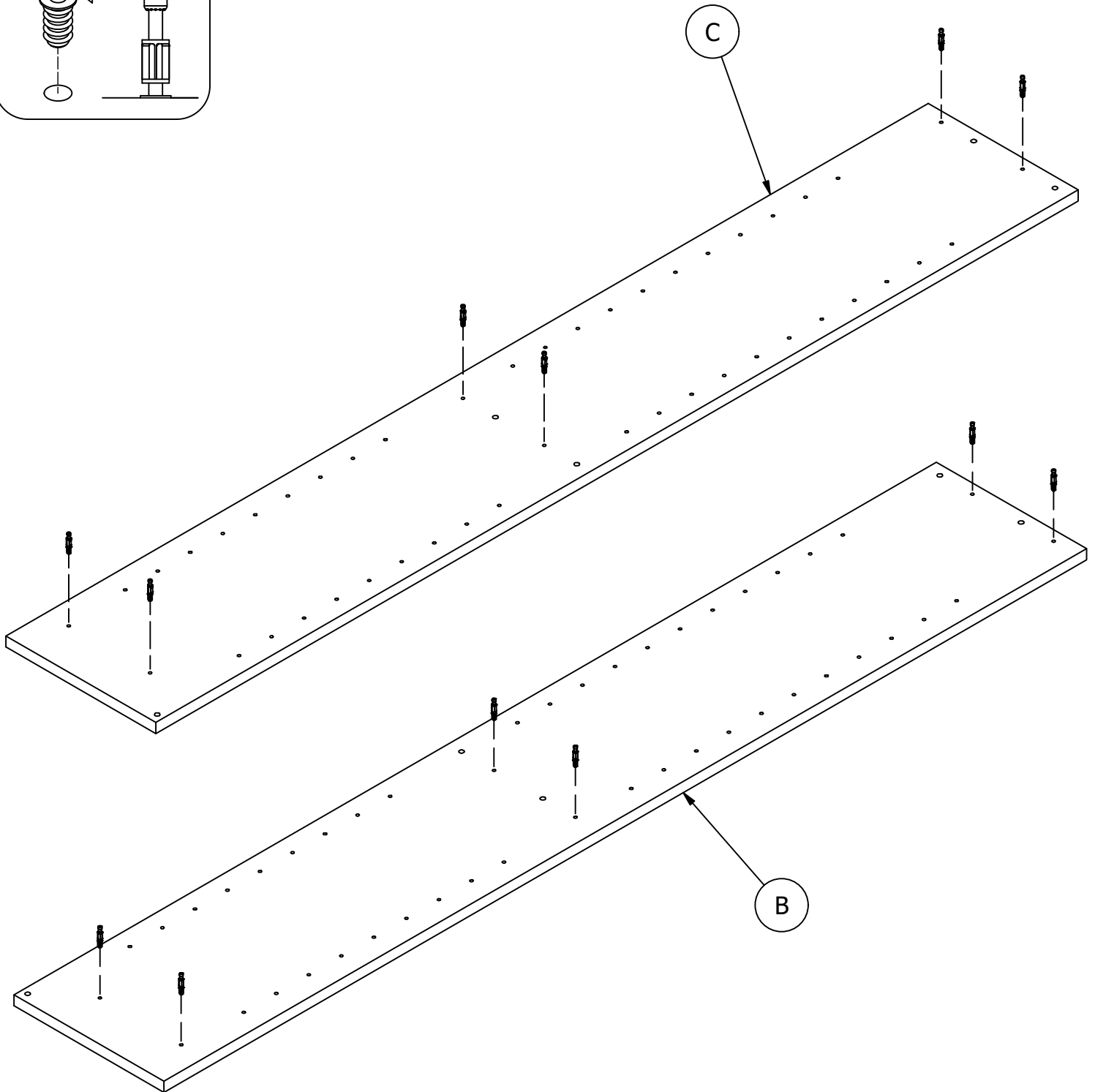


STEP 3

Prepare Panels



H72988 [12]
KD Bolt



STEP 4

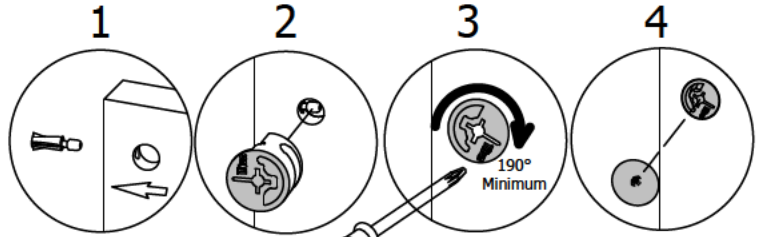
Assemble Panels

H181468US



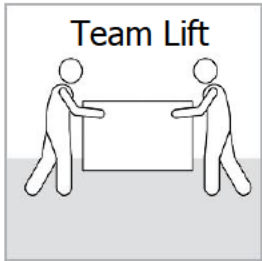
[6]

KD Cam3000

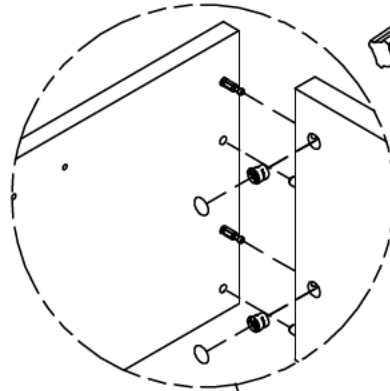


[4]

Cover Cap



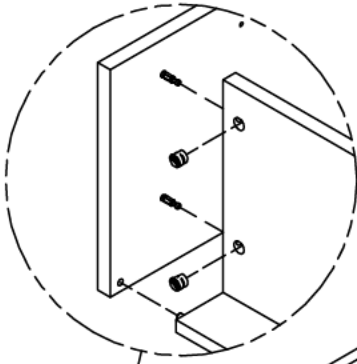
Team Lift



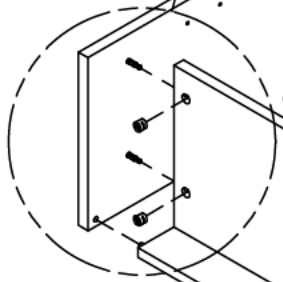
Raw edge
Orilla sin acabado
Côté brut

C

A



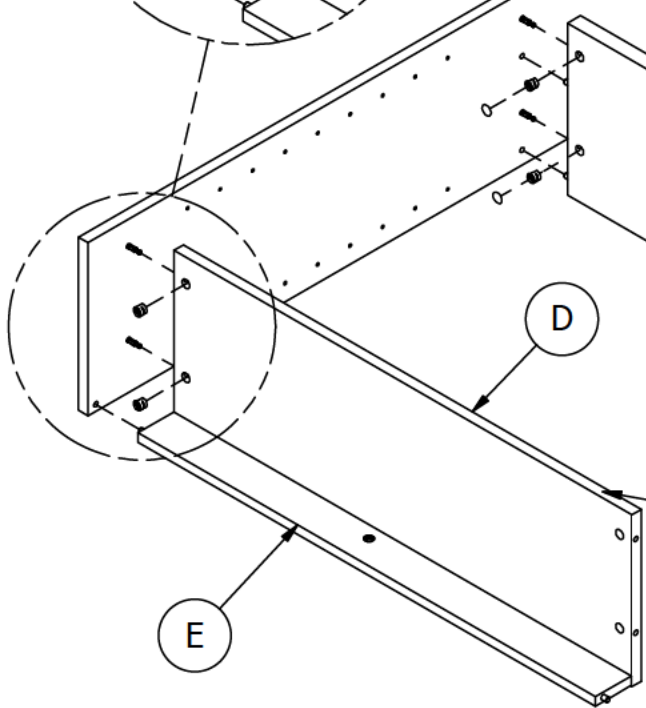
A



D

Raw edge
Orilla sin acabado
Côté brut

E



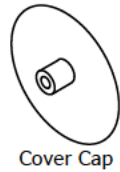
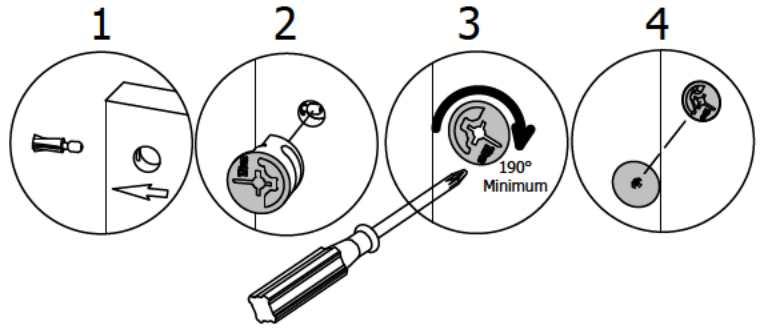
STEP 5

Assemble Panels

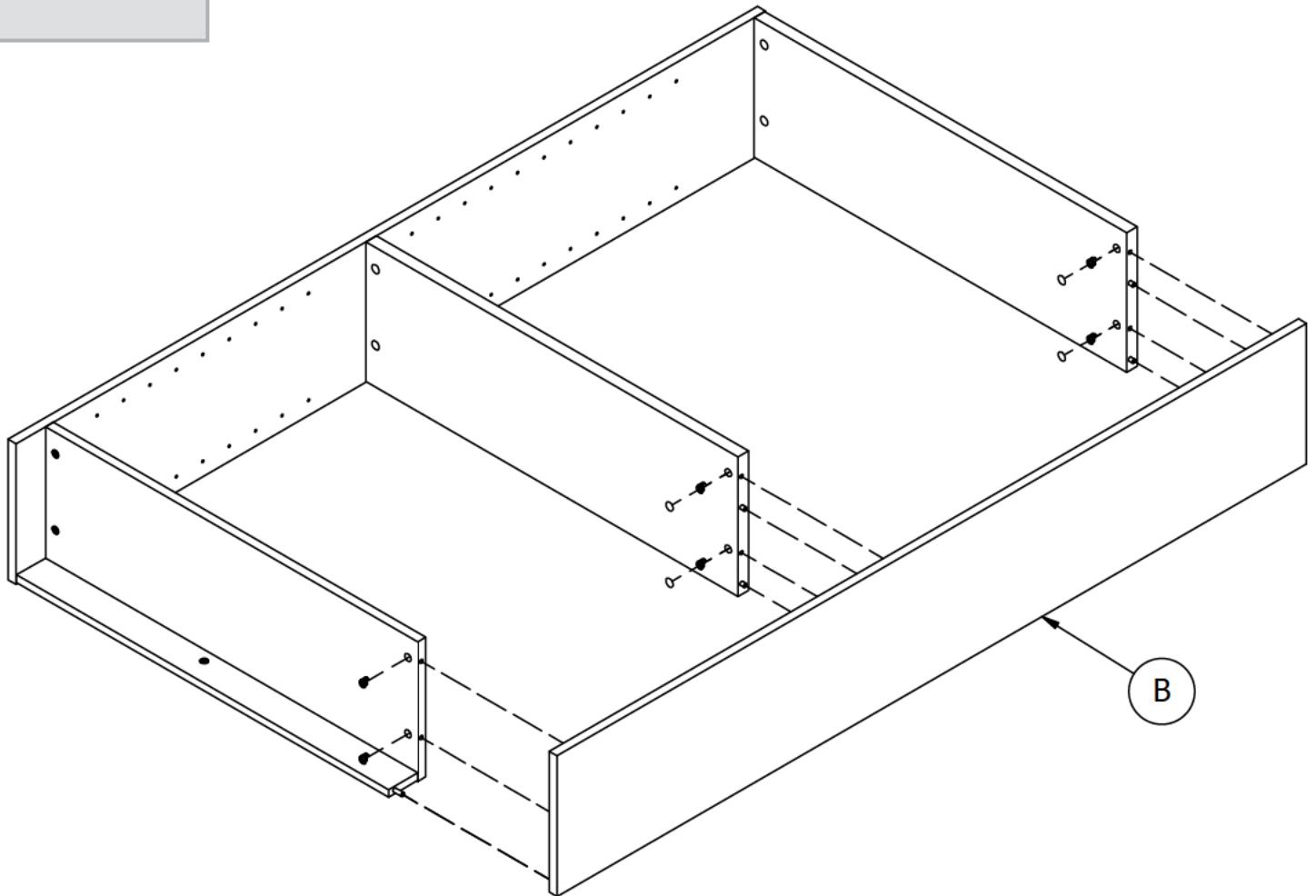
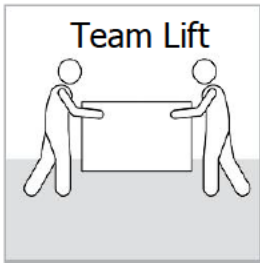
H181468US



[6]

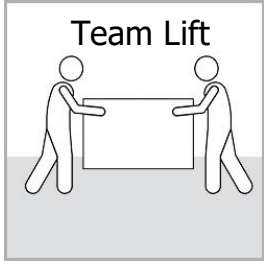


[4]

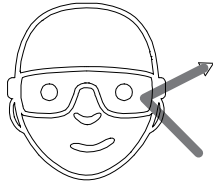


STEP 6

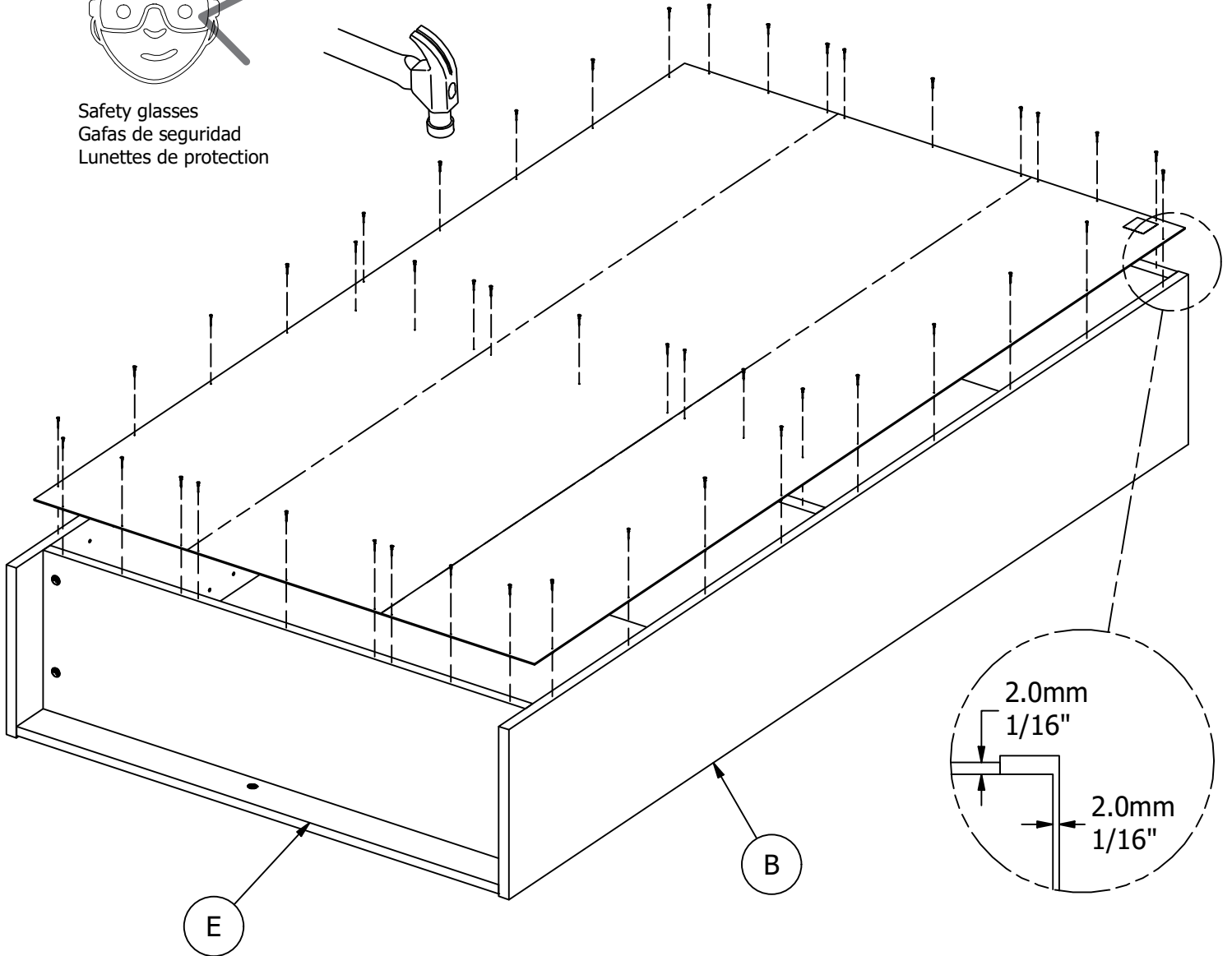
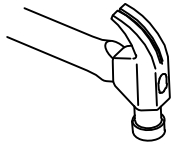
Assemble Panels



H34174 [45]
Nail 19mm



Safety glasses
Gafas de seguridad
Lunettes de protection



STEP 7

Install Hardware

Secure unit to the wall with a tip-over restraint.

Unidad de seguro a la pared con un sistema de retención de un vuelco.

Fixer l'unité au mur avec un dispositif de retenue renversement.

1. Place unit in desired location.
2. Locate wall stud nearest unit center. **FIG A**
3. On wall, mark center of stud location 1" below top of unit. **FIG A**
4. If a wall stud cannot be located mark hollow wall at unit center. **FIG A**
5. On back of unit, mark corresponding location 3/8" below top of unit. **FIG B**

1. Coloque la unidad en el lugar deseado.
2. Localice pie derecho de pared centro de unidad más próxima.
3. En la pared del, marque el centro de la ubicación del montante 1 "abajo la parte superior de la unidad.
4. Si un poste de la pared no se puede localizar marcar pared hueca en el centro de la unidad.
5. En el dorso de la unidad, marque la ubicación 3/8 correspondiente abajo la parte superior de la unidad.

1. Placez l'unité à l'endroit désiré.
2. Localiser centre d'unité la plus proche de la paroi Stud.
3. Sur le mur, centre de emplacement du montant 1 "ci-dessous dessus de l'appareil de la marque.
4. Si un montant de mur ne peut pas être situé marquer mur creux au centre de l'unité.
5. Le dos de l'appareil, marquer l'emplacement 3/8 correspondant ci-dessous dessus de l'appareil.

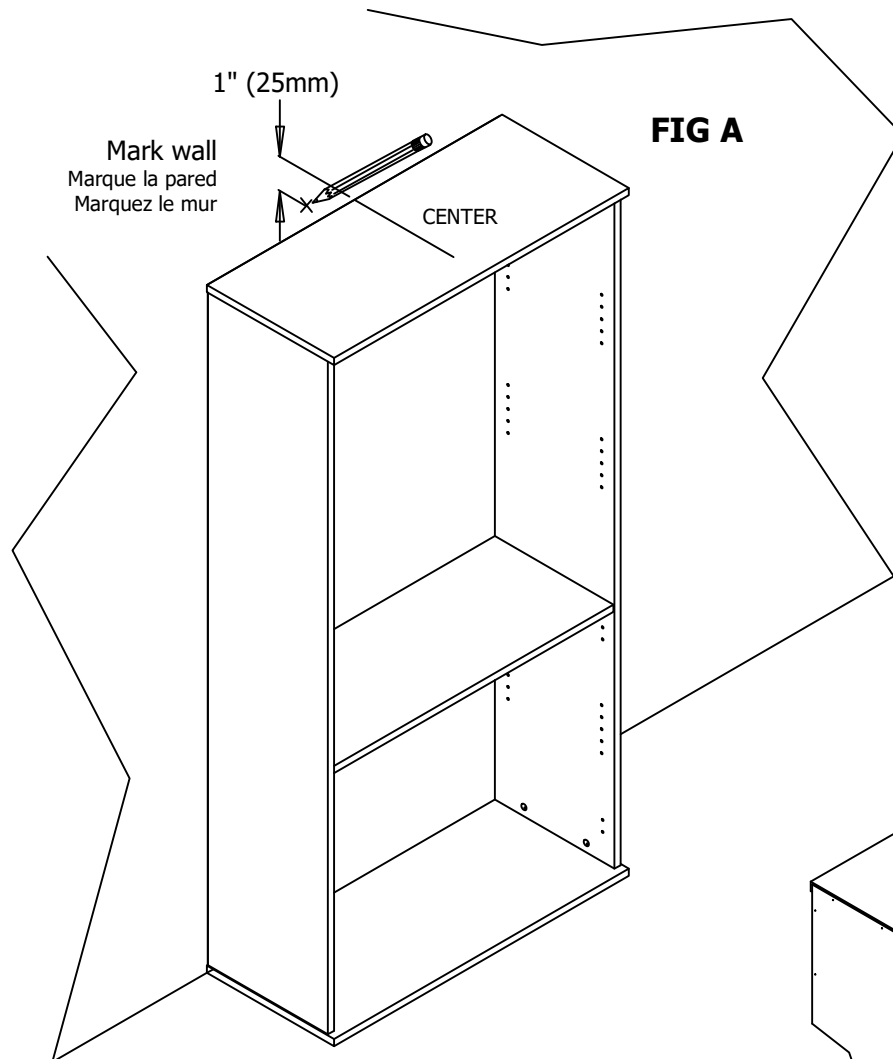
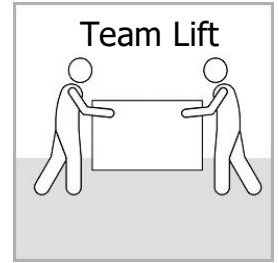


FIG A

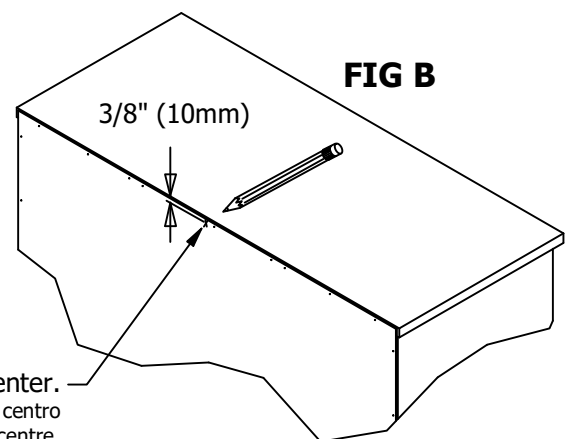


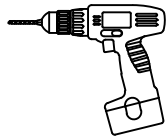
FIG B

Mark back within 6" (150mm) of center.
Marcar de vuelta dentro de 6" (150mm) de centro
Mark dans les 6" (150mm) de centre.

STEP 8

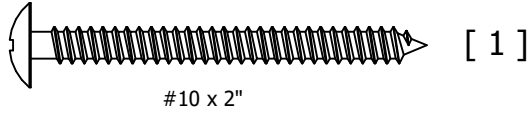
Install Hardware

WALL STUD ATTACHMENT

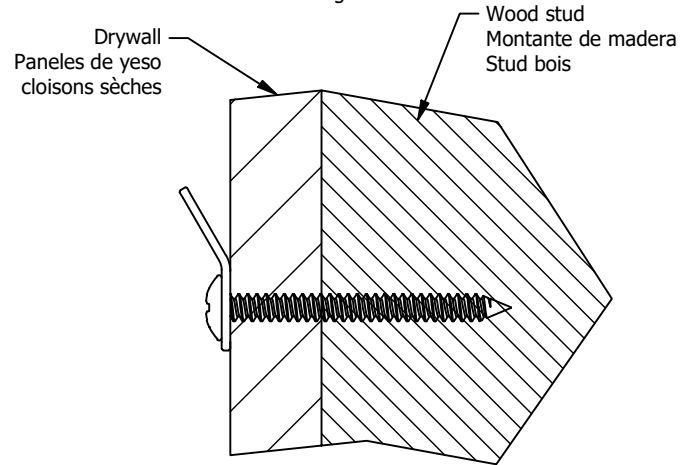
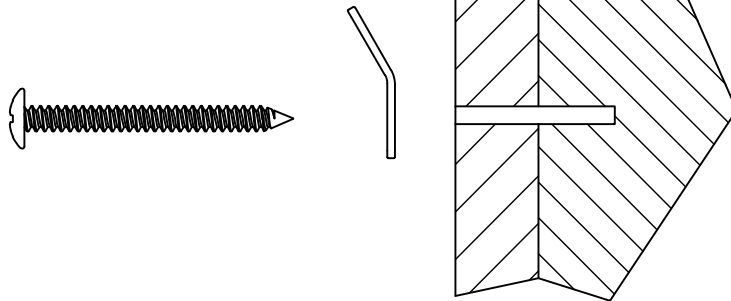
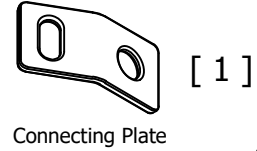


Drill 1/8" hole 2" deep at mark on wall.
Taladro 1/8 "agujero 2" de profundidad en la marca en la pared.
Percer 1/8 "trou de 2" de profondeur à la marque sur le mur.

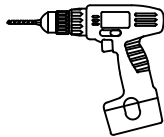
H181434



H181412

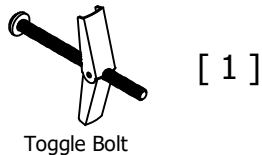


HOLLOW WALL ATTACHMENT

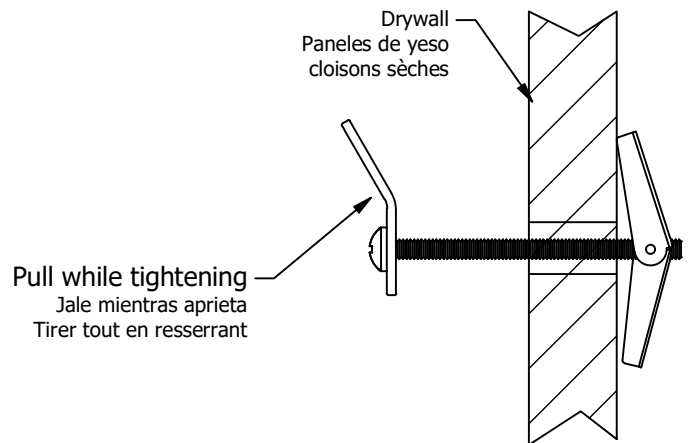
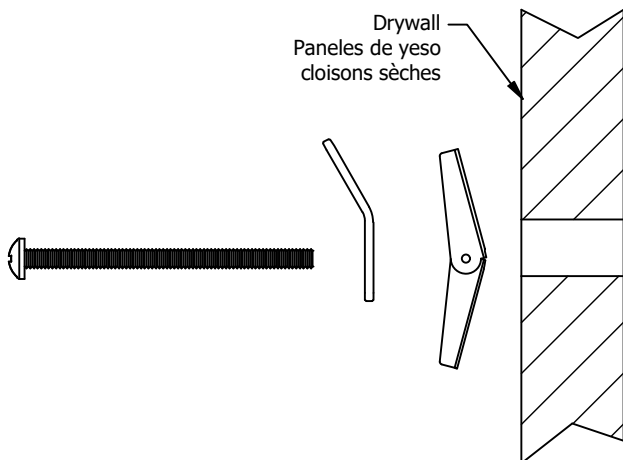
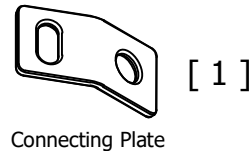


Drill 1/2" hole 1" deep at mark on wall.
Taladro 1/2 "agujero 1" de profundidad en la marca en la pared.
Percer 1/2 "trou de 1" de profondeur à la marque sur le mur.

H181419



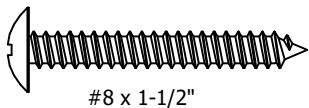
H181412



STEP 9

Install Hardware

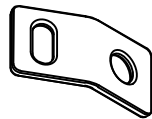
H107572



[1]

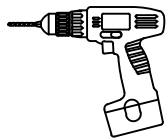
#8 x 1-1/2"

H181412



[1]

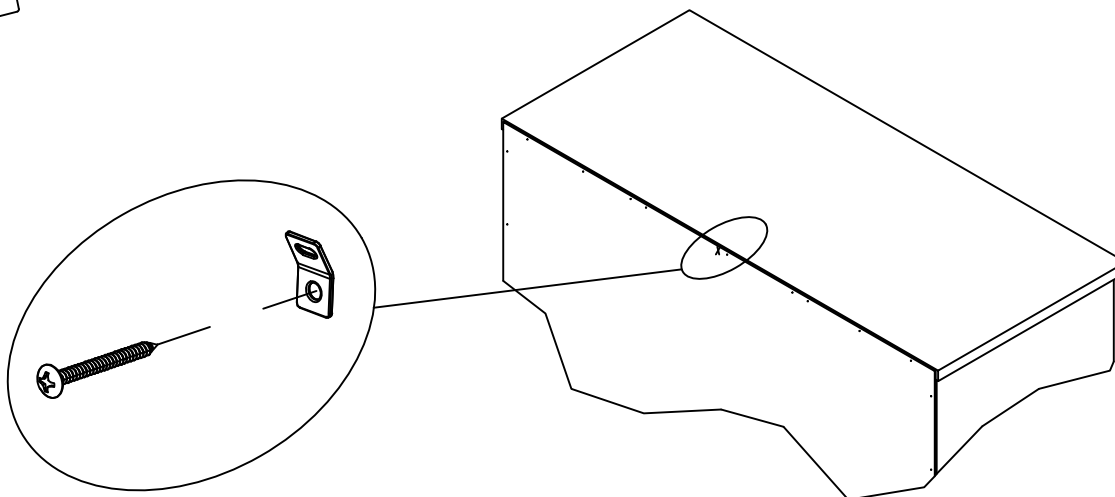
Connecting Plate



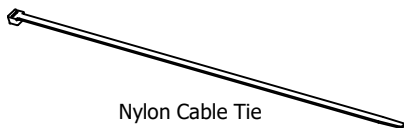
Drill 1/8" hole 1" deep at mark on unit.

Taladro 1/8 "agujero de 1" de profundidad en la marca de la unidad.

Perçer 1/8 "trou 1" de profondeur à la marque sur l'unité.

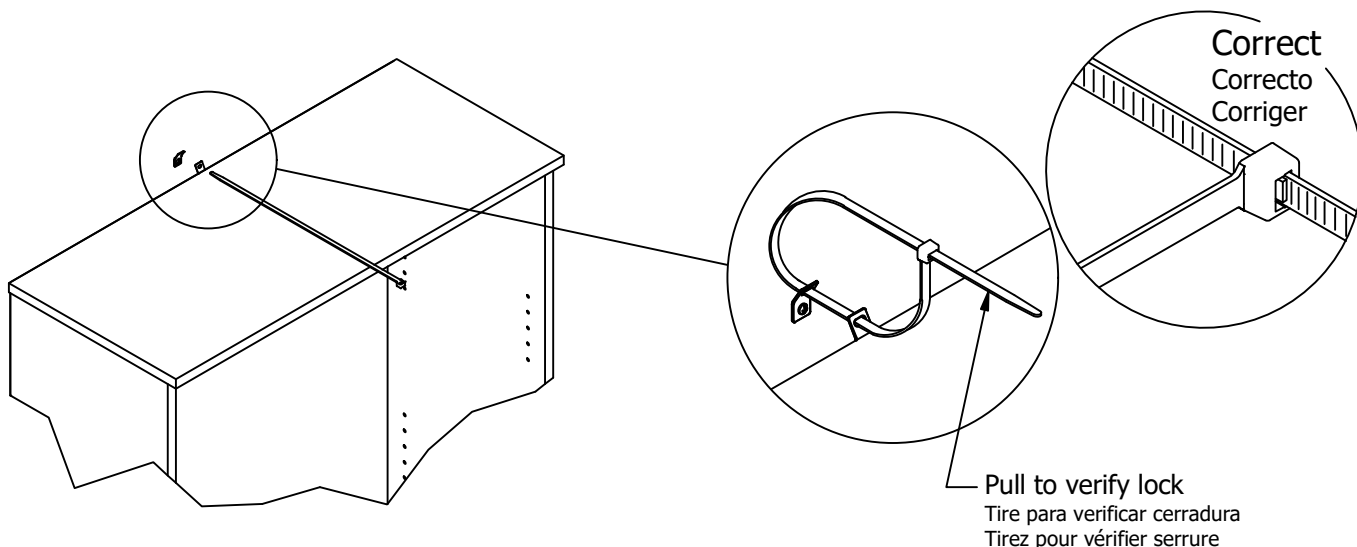


H181411



[1]

Nylon Cable Tie



Pull to verify lock
Tire para verificar cerradura
Tirez pour vérifier serrure

Use replacement cable tie with minimum breaking strength of 120lbs.

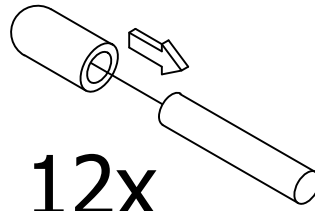
Utilice reemplazo empate Cable con resistencia a la rotura mínima de 120 libras.

Utilisez remplacement Attache de câble avec une force de rupture minimale de 120 lbs.

STEP 10

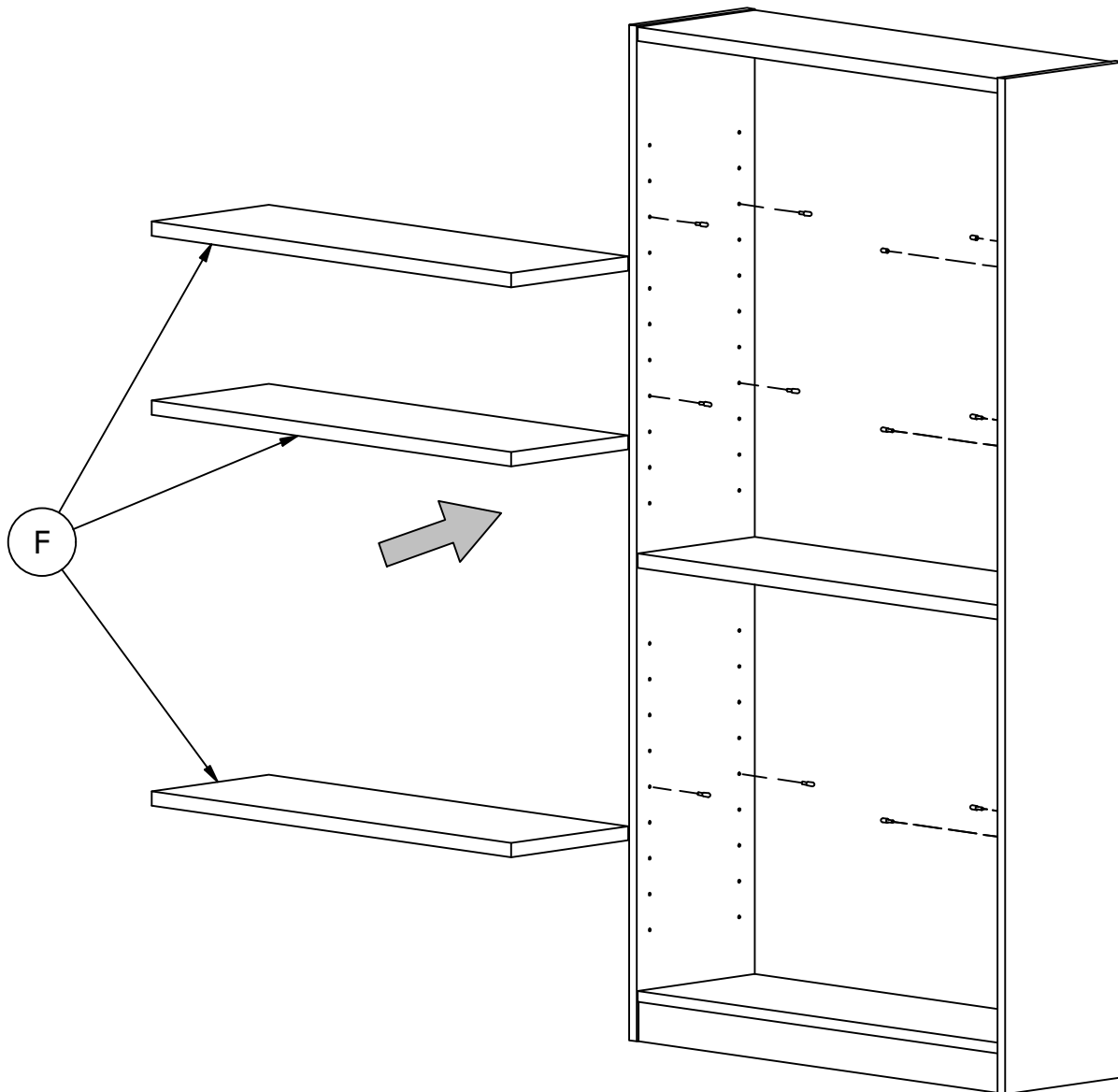
Assemble Panels

H23604 [12]
Shelf Pin



12x

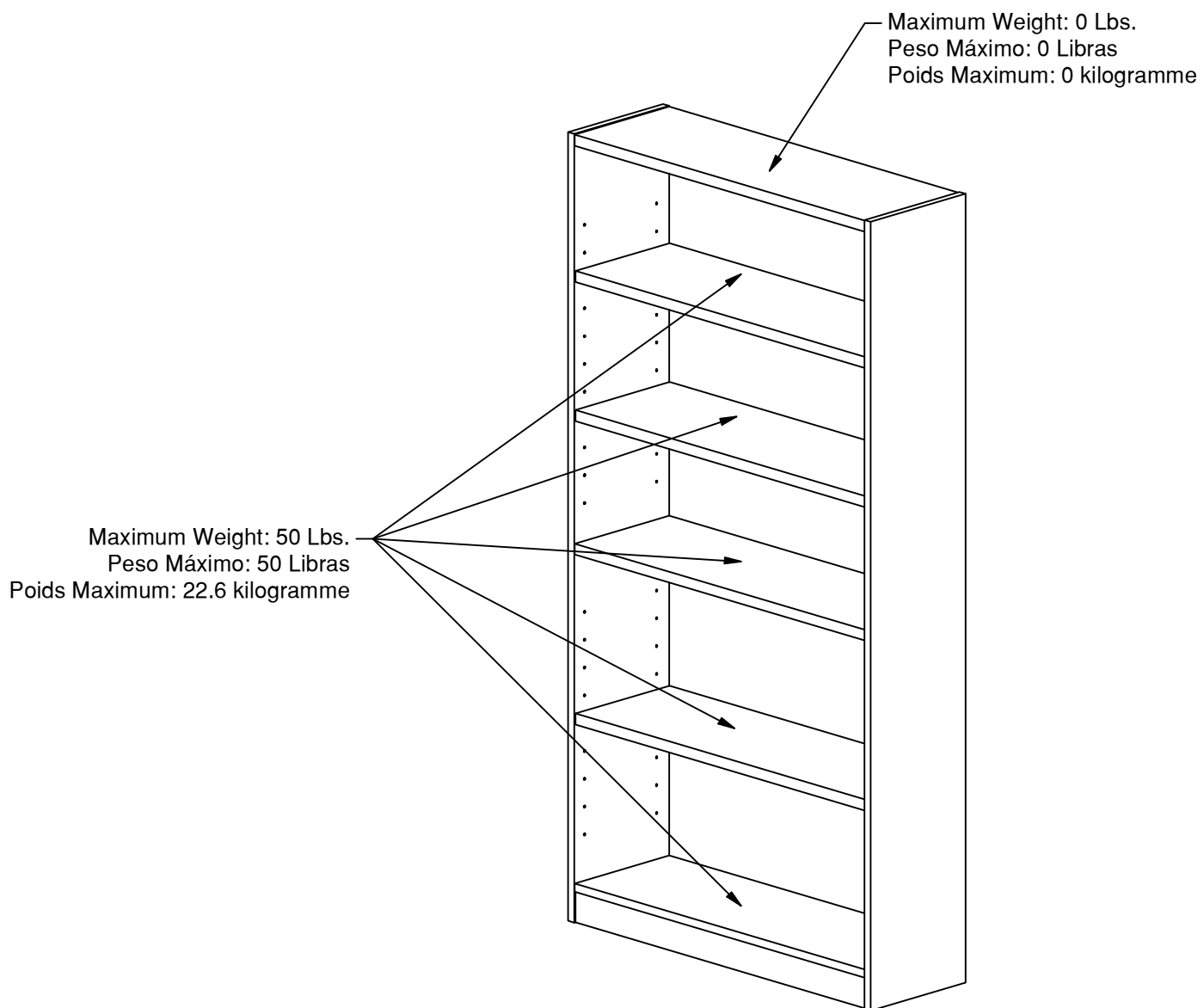
H126396 [12]
Shelf Pin Sleeve



STEP 11

Maximum Loading and Cleaning

Gently clean surfaces with a damp sponge eraser.

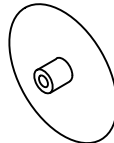


PARTS LIST

WL12417		
LABEL CODE	QTY	PART NUMBER
A	2	W212986
B	1	W213022
C	1	W213023
D	1	W212989
E	1	W212990
F	3	W212991
G	1	W213024

WL12427		
LABEL CODE	QTY	PART NUMBER
A	2	W212993
B	1	W213025
C	1	W213026
D	1	W212996
E	1	W212997
F	3	W212998
G	1	W213027

H73619



[8]

Cover Cap

H83021



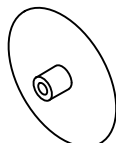
[8]

Cover Cap

WL12436		
LABEL CODE	QTY	PART NUMBER
A	2	W213000
B	1	W213028
C	1	W213029
D	1	W213003
E	1	W213004
F	3	W213005
G	1	W213030

WL12439		
LABEL CODE	QTY	PART NUMBER
A	2	W218531
B	1	W218538
C	1	W218539
D	1	W218534
E	1	W218535
F	3	W218536
G	1	W218540

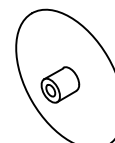
H73621



[8]

Cover Cap

H184321

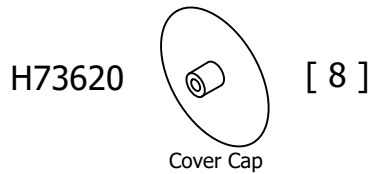


[8]

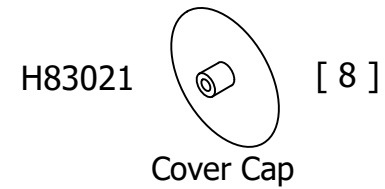
Cover Cap

PARTS LIST

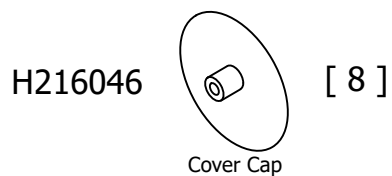
WL12467		
LABEL CODE	QTY	PART NUMBER
A	2	W213014
B	1	W213034
C	1	W213035
D	1	W213017
E	1	W213018
F	3	W213019
G	1	W213036



WL12457		
LABEL CODE	QTY	PART NUMBER
A	2	W220132
B	1	W220139
C	1	W220140
D	1	W220135
E	1	W220136
F	3	W220138
G	1	W220141



WL12479		
LABEL CODE	QTY	PART NUMBER
A	2	W220142
B	1	W220149
C	1	W220150
D	1	W220145
E	1	W220146
F	3	W220148
G	1	W220151



WL12453		
LABEL CODE	QTY	PART NUMBER
A	2	W220343
B	1	W220350
C	1	W220351
D	1	W220346
E	1	W220347
F	3	W220349
G	1	W220352

