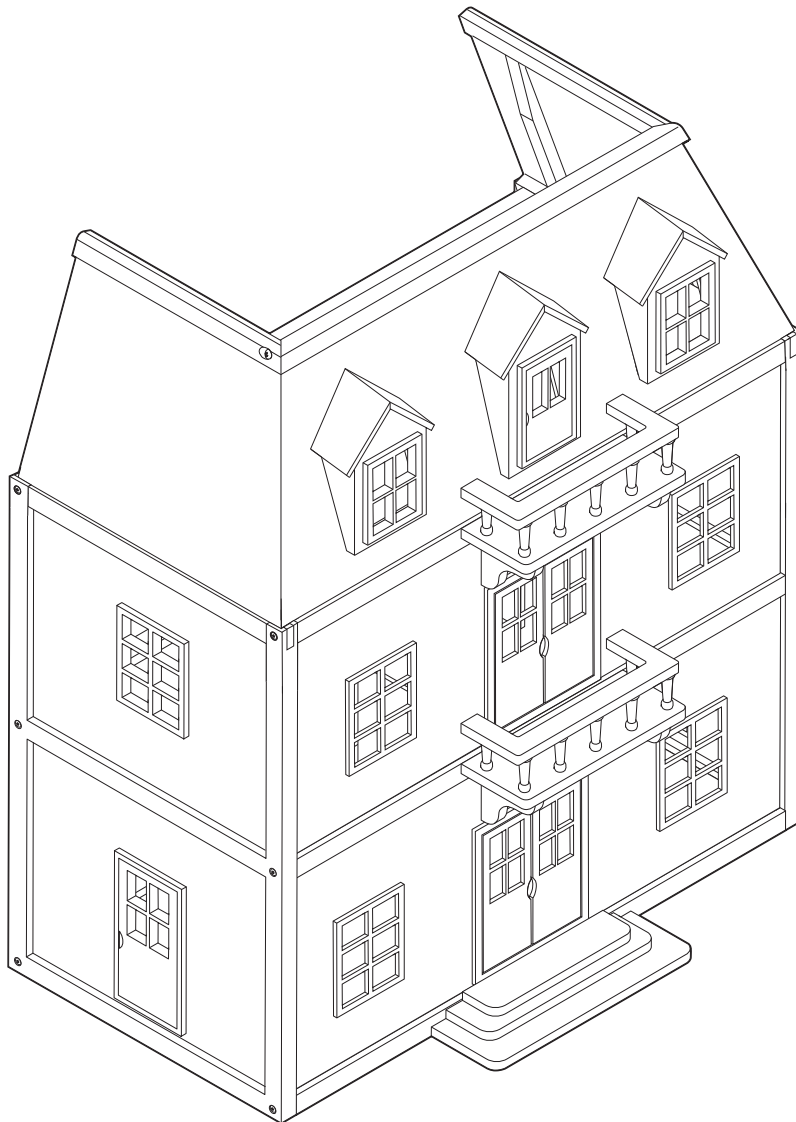




Multi-Level Wooden Dollhouse

ASSEMBLY INSTRUCTIONS

Put
Together
in 10 Steps!



Have a
question
or need help?
Give us a call!
1-800-284-3948

Item # 4570

We care about your comments. Please call us!

Melissa & Doug
1-800-284-3948
www.MelissaAndDoug.com

Melissa & Doug products meet or exceed U.S. testing standards and pass our high quality requirements.
© Melissa & Doug, LLC, P.O. Box 590, Westport, CT 06881
MADE IN CHINA

WARNING:
CHOKING HAZARD - Small Parts.
Not for children under 3 years.

CAUTION:
ADULT ASSEMBLY REQUIRED.

Ages 3+

THANK YOU!

Thank you for choosing the Melissa & Doug Multi-Level Wooden Dollhouse! It's a terrific way to help nurture a child's creativity and imagination, and to inspire storytelling and independent play for years to come.

NOW IT'S TIME TO PUT IT TOGETHER!

Don't worry, assembling your new dollhouse is simple, and we're here to help. It may go a little faster with a partner to lend a hand, but we've made it so one person can assemble the dollhouse. Here are a few tips before you begin:

- Read through all the instructions first.
- Clear a flat, covered space (carpeted is best) to lay out all the materials so everything is close at hand.
- You will need a Phillips head screwdriver (not included) to assemble the dollhouse. We've included everything else you will need. All parts are labeled with a sticker (A-S).
- The instructions include lots of helpful pictures—we show you, step-by-step, exactly how to align pieces and parts for speedy and accurate assembly. Note that hardware needed for each step is shown in the upper right corner of the page, each piece being added in a given step is highlighted in gray, and the “assembled view” (what it looks like when the step is completed) is included in the lower right corner of every section.
- In the instructions, the name of a part is followed by a letter in parentheses. This letter corresponds to the sticker on the part, as well as the picture of the part shown on pages 2-3.
- Helpful hints are highlighted with a large exclamation point.



IMPORTANT: Helpful hints are found here.

- If you have any questions, we're here for you! Give our customer care team a call at 1-800-284-3948!
-

WARNINGS!

Retain these instructions for future reference.

Warning—Prevent Tip Overs!

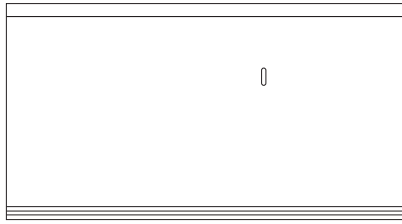
- Do not allow children to pull, climb, sit, or stand on any part of the dollhouse.
 - Never place computers, televisions, or other heavy objects on top of the dollhouse.
 - The dollhouse must be placed on a hard, flat, and level surface.
 - For more information on how to prevent furniture tip overs in your home visit AnchorIt.gov.
 - The dollhouse must be assembled as instructed.
-

MAINTENANCE:

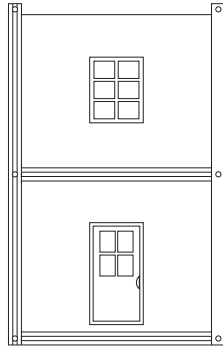
Ensure the dollhouse continues to function properly and safely by regularly checking the hardware and tightening when necessary.

PARTS - Be Smart—Sort Your Parts

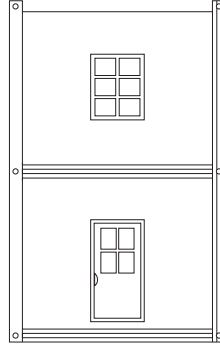
Before you begin assembly, make sure you have all the parts listed below. Use the Allen wrench (part S) to attach the bolts and a Phillips head screwdriver (not included) to attach the screws.



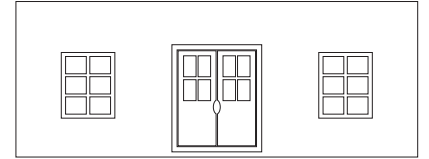
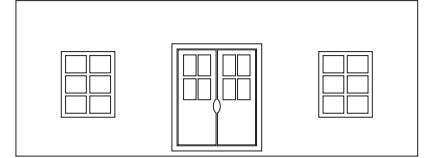
A bottom floor panel



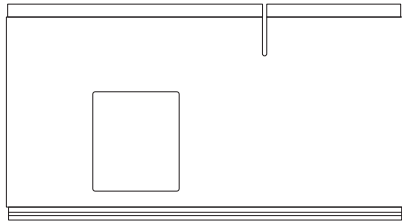
B left side wall



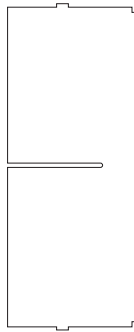
C right side wall



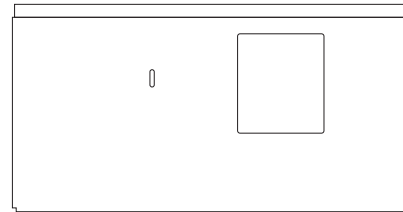
D front panels (2)



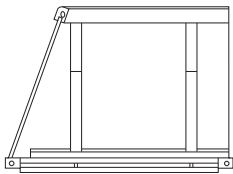
E middle floor panel



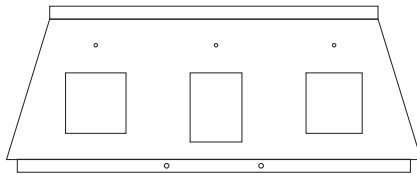
F divider



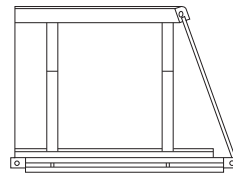
G top floor panel



H left side roof



I front roof



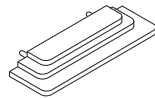
J right side roof



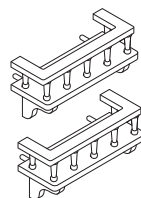
K door dormer



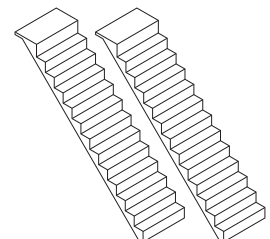
L window dormers (2)



M front steps



N balconies (2)

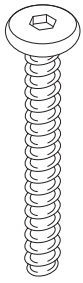


O stairs (2)

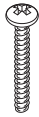
HARDWARE



- Some packages of hardware may have extra pieces.
- You will need either a Phillips head (not included) to assemble the dollhouse.



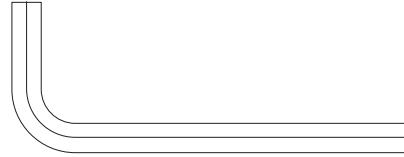
P bolt (12)



Q short screw (2)

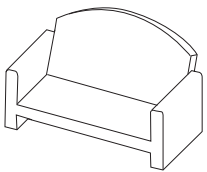


R medium screw (3)



S Allen wrench

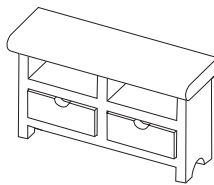
ACCESSORIES



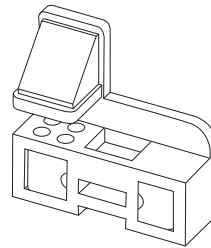
sofa



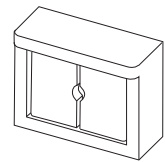
end table



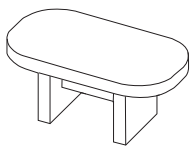
counter



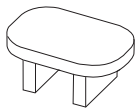
cooking range



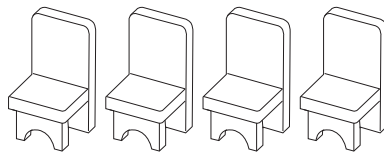
cabinet



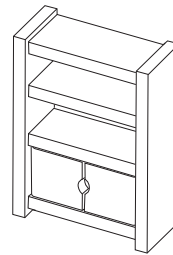
large table



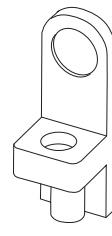
small table



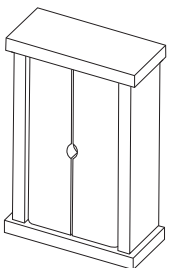
chairs (4)



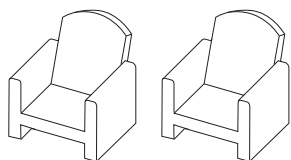
hutch



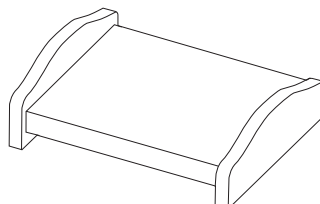
vanity



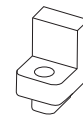
armoire



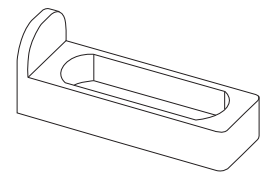
arm chairs (2)



bed



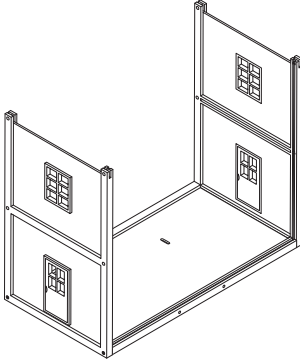
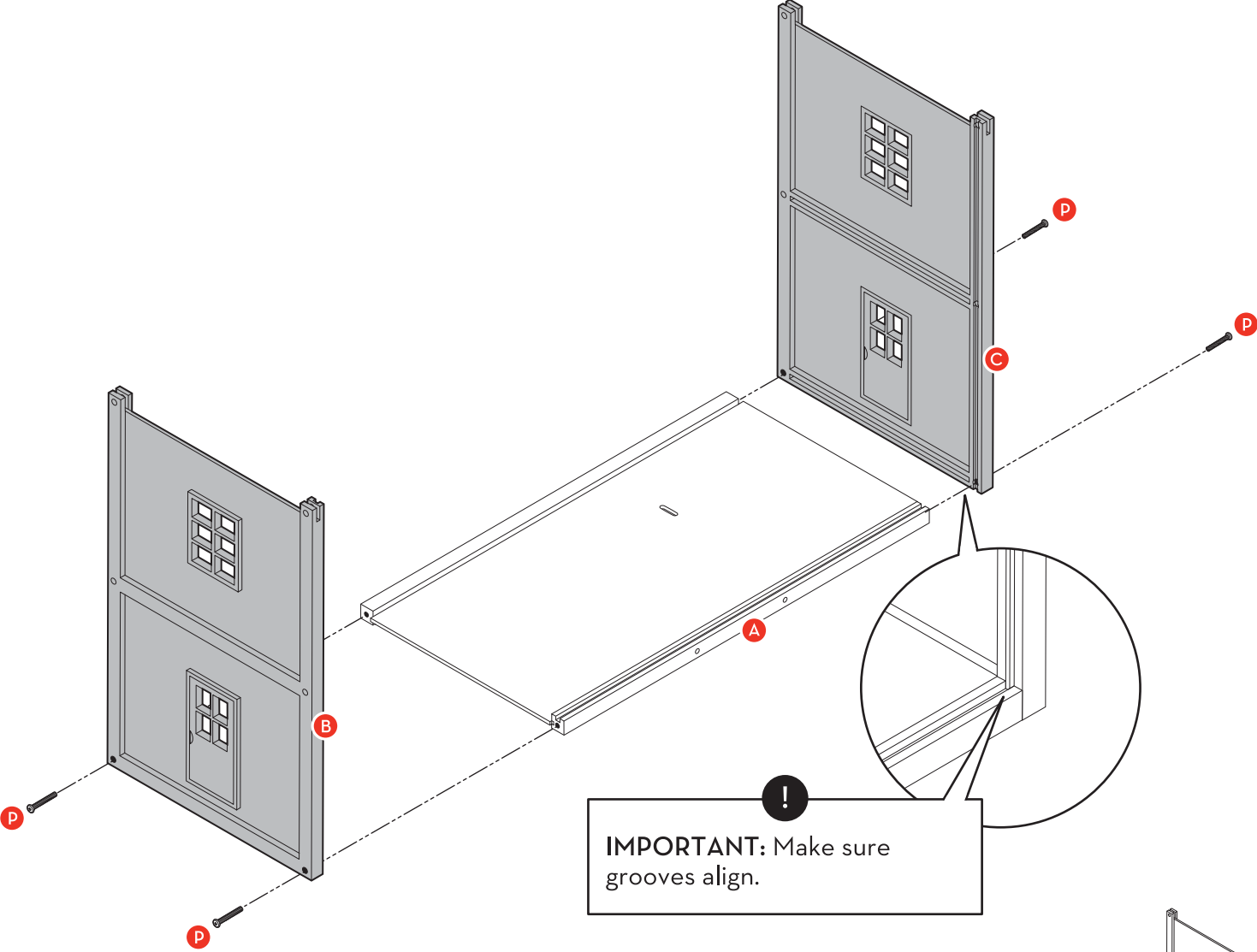
toilet



tub

STEP 1 - Every Journey Begins with the First Step

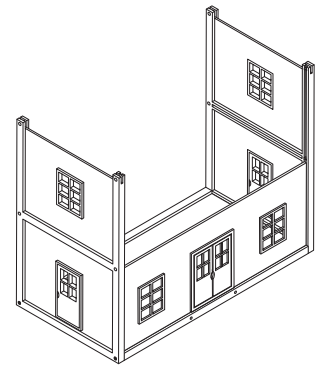
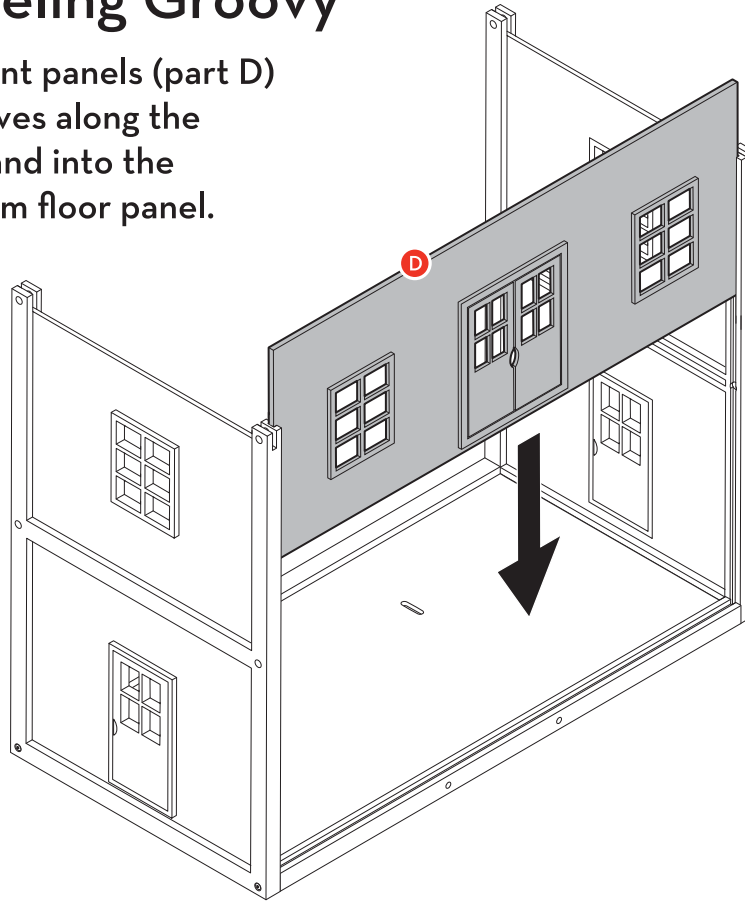
Using 4 bolts (part P), attach the left side wall (part B) and the right side wall (part C) to the bottom floor panel (part A).



Assembled View

STEP 2 - Feeling Groovy

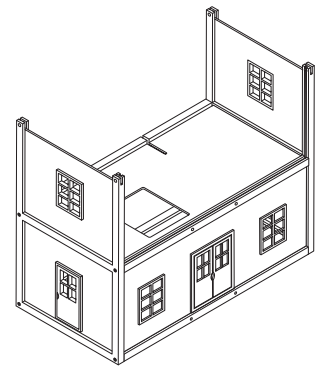
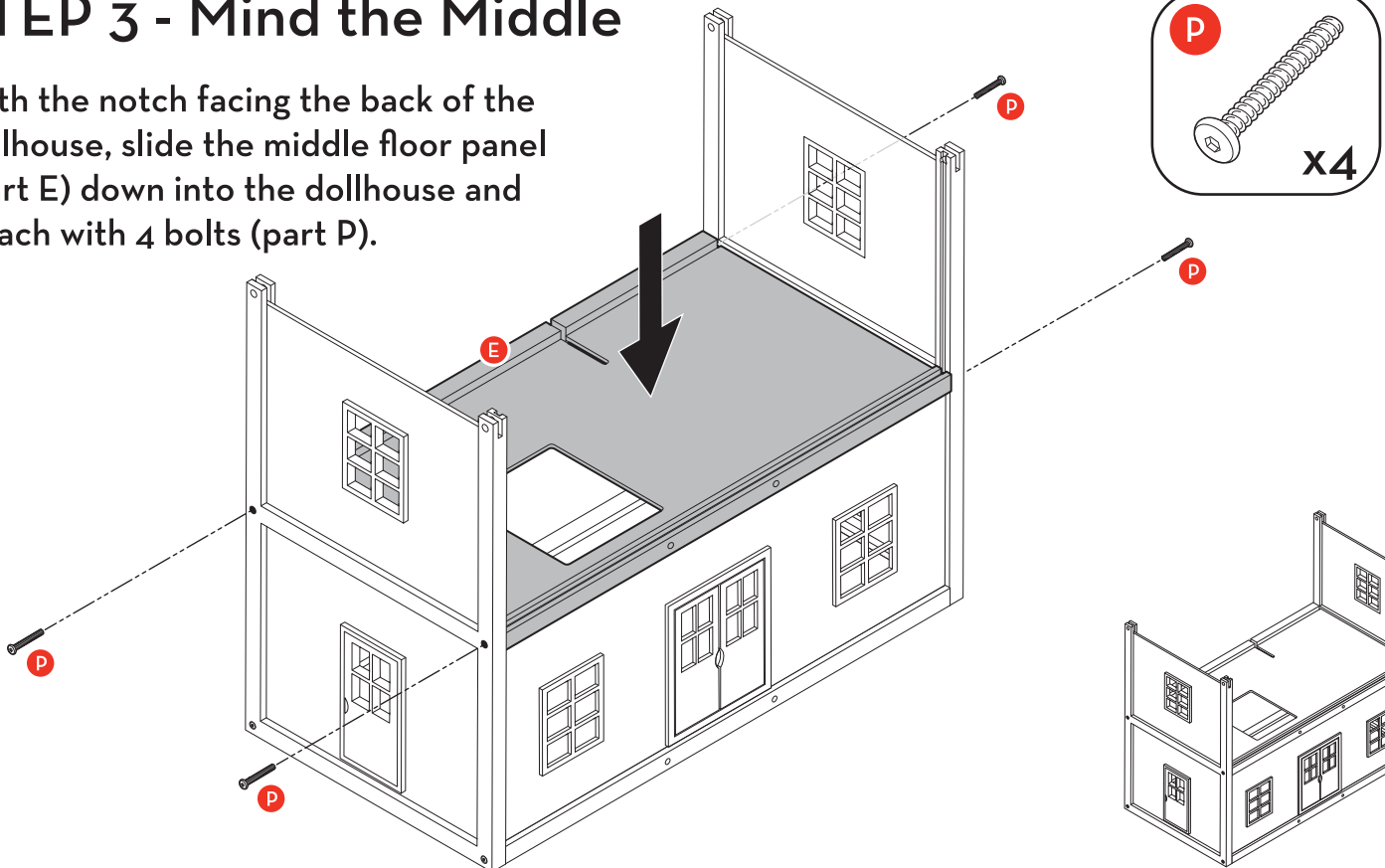
Slide one of the front panels (part D) down into the grooves along the inside of the walls and into the groove in the bottom floor panel.



Assembled View

STEP 3 - Mind the Middle

With the notch facing the back of the dollhouse, slide the middle floor panel (part E) down into the dollhouse and attach with 4 bolts (part P).

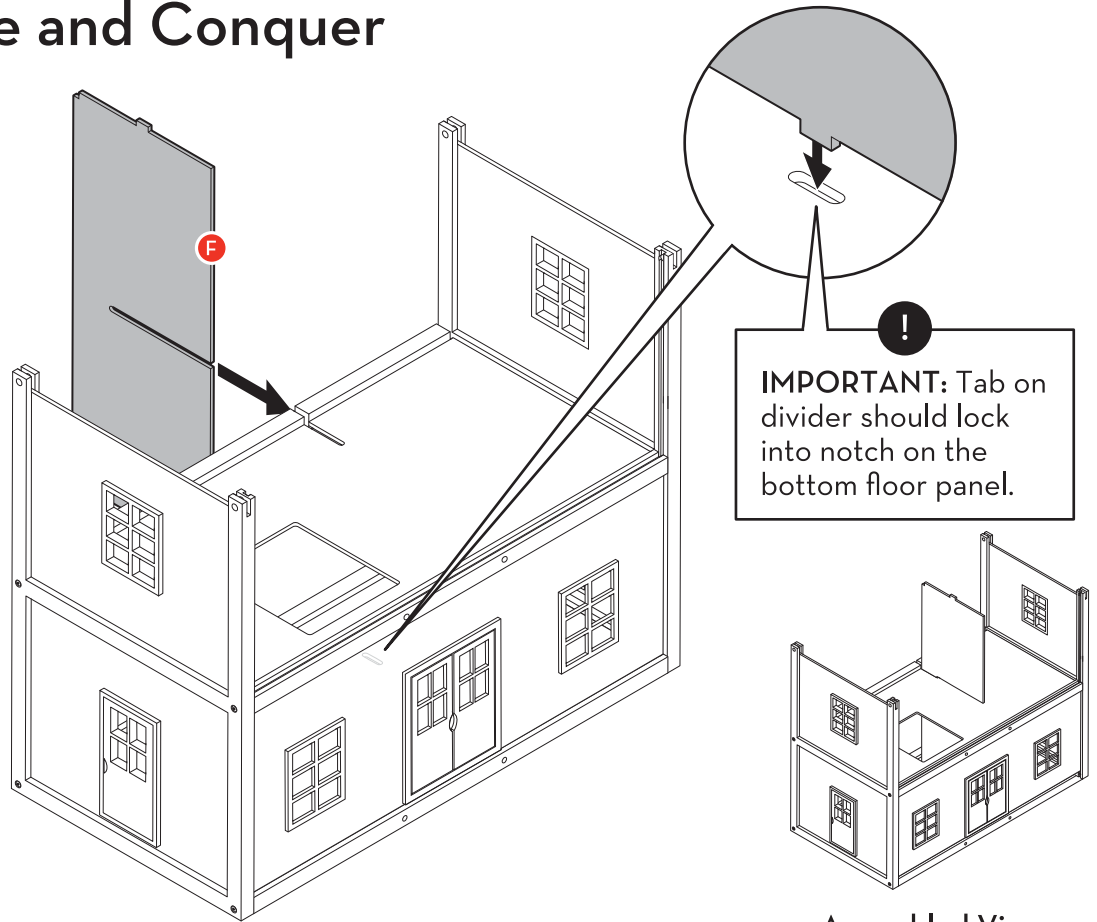


Assembled View

Melissa & Doug Customer Service: 1-800-284-3948

STEP 4 - Divide and Conquer

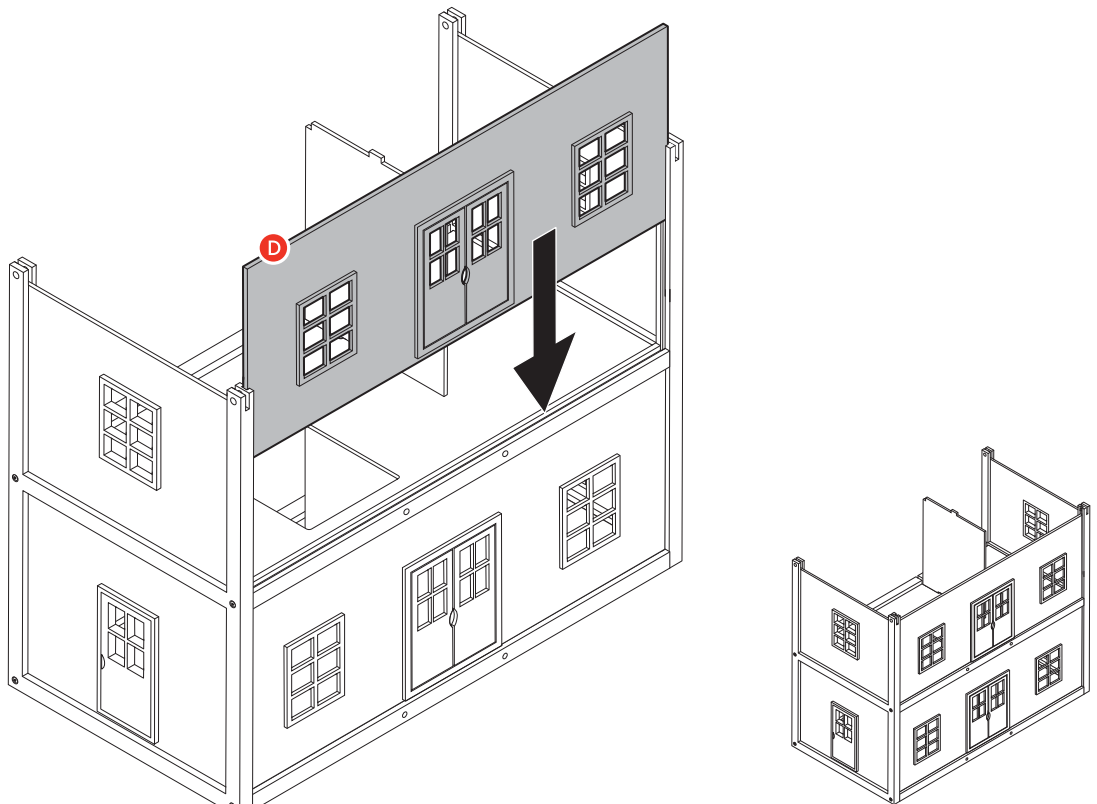
Slide divider (part F) into the slot in the back of the middle floor. The tab on divider should lock into notch on the bottom floor panel.



Assembled View

STEP 5 - The Front Wall Has It All

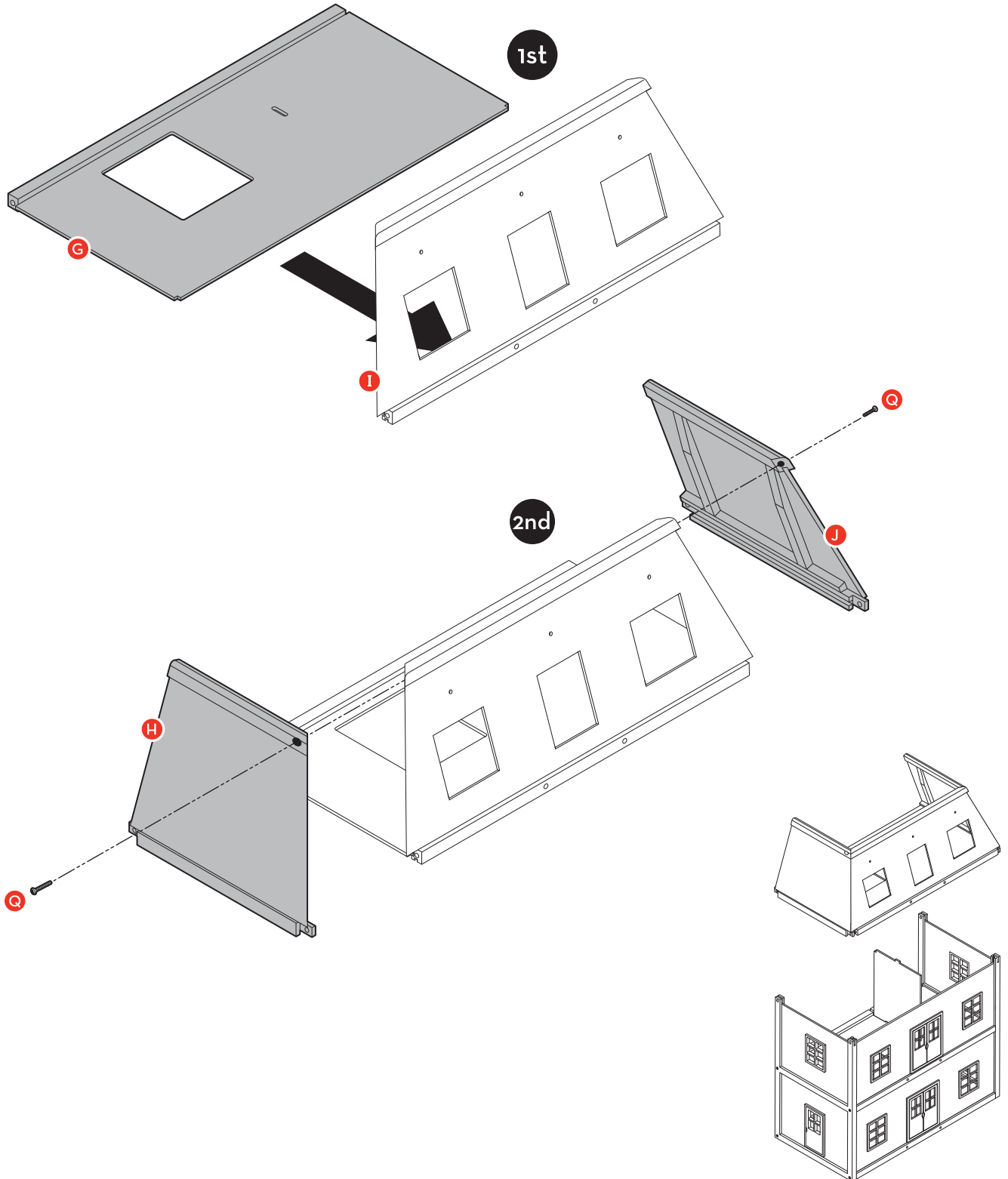
Slide the second front wall panel (part D) down into the grooves along the inside of the walls and into the groove in the middle floor panel.



Assembled View

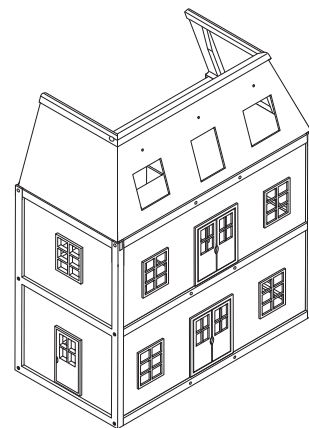
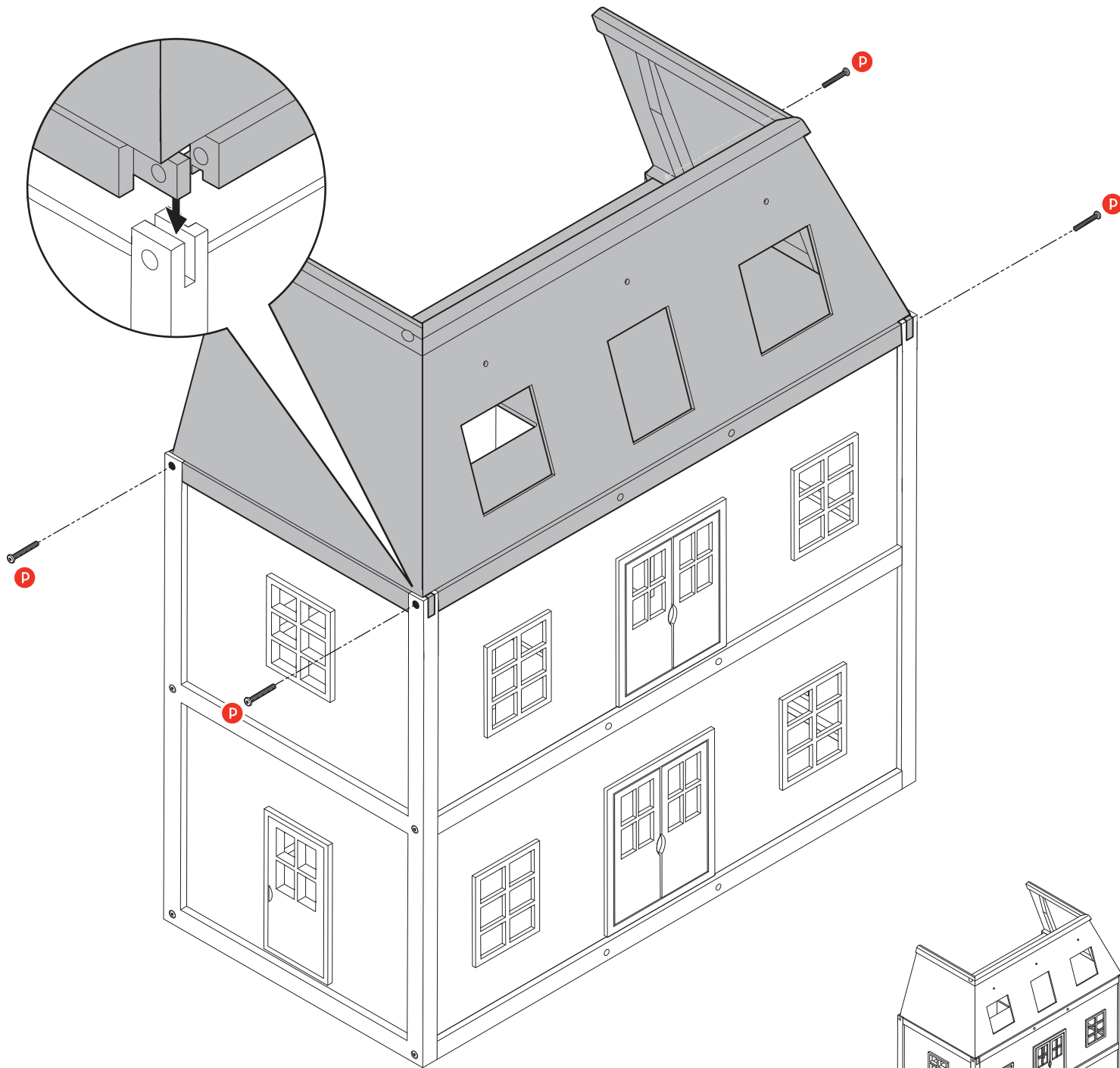
STEP 6 - Raise the Roof

- First, slide the top floor (part G) into the groove along the bottom of the front roof (part I).
- Second, using 2 small screws (part Q), attach the left roof (part H) and the right roof (part J) to the front roof.



STEP 7 - Top This

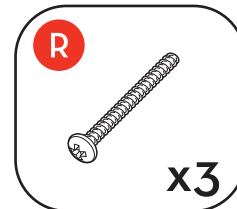
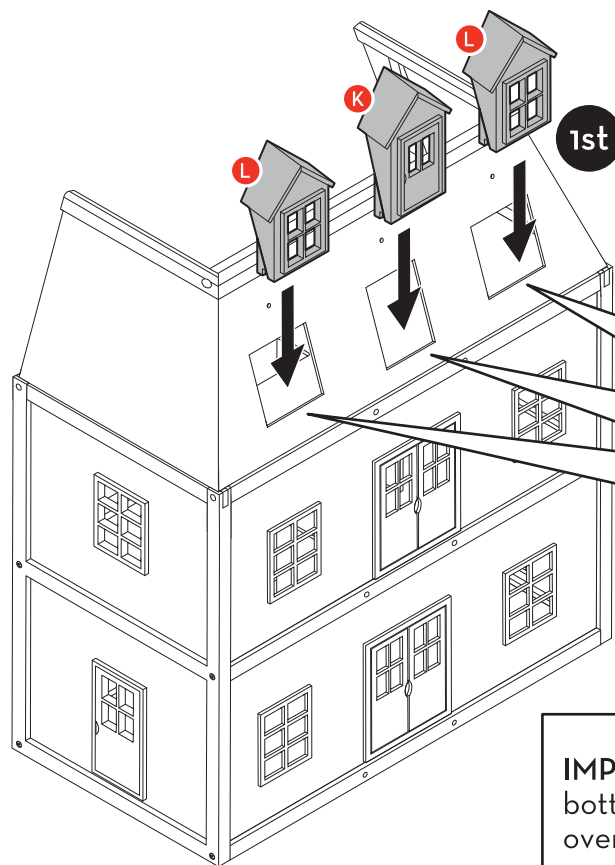
Place the roof assembly onto the top of the dollhouse. Slot the 4 corners of the roof into the 4 corners of the dollhouse. Using 4 bolts (part P), attach the roof assembly to the dollhouse.



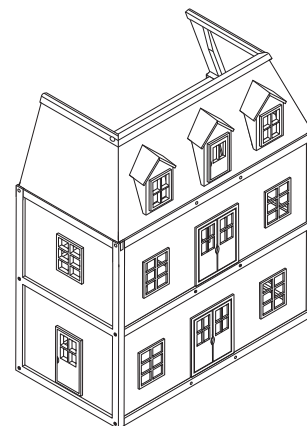
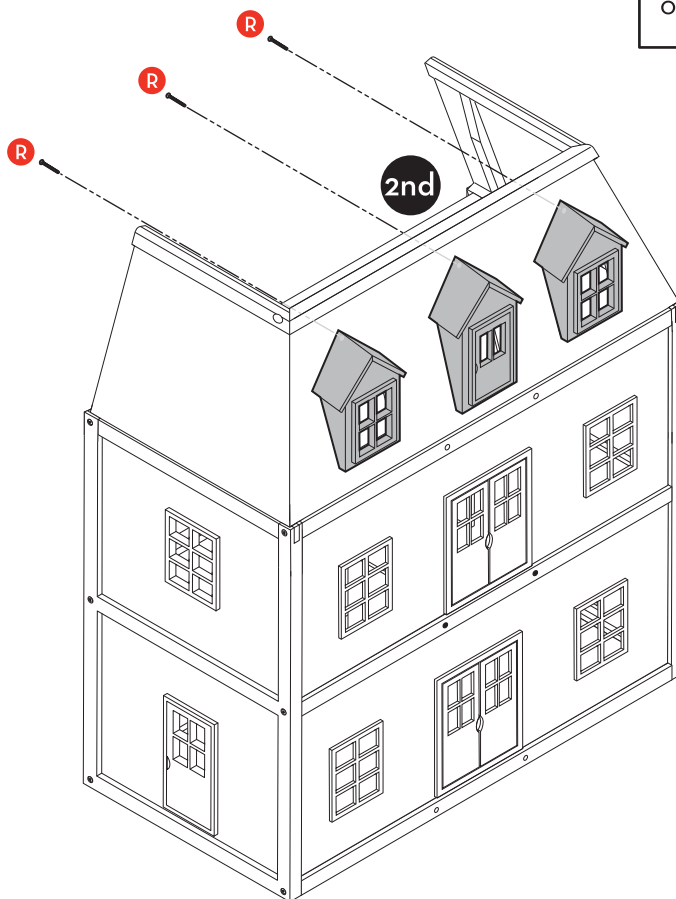
Assembled View

STEP 8 - It's Warmer with Dormers

- First, place the window dormers (part L) on the outer openings in the roof. Place the door dormer (part K) on the center opening in the roof. The slots on the bottom of each dormer hook over the edges of the roof openings.
- Second, using 3 medium screws (part R), attach the top of the dormers through the back of the roof.

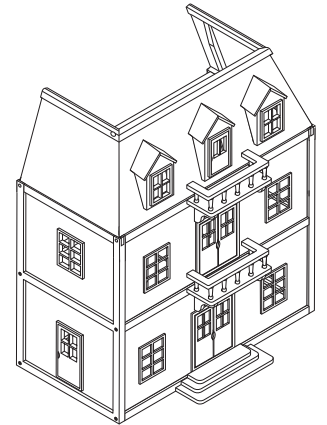
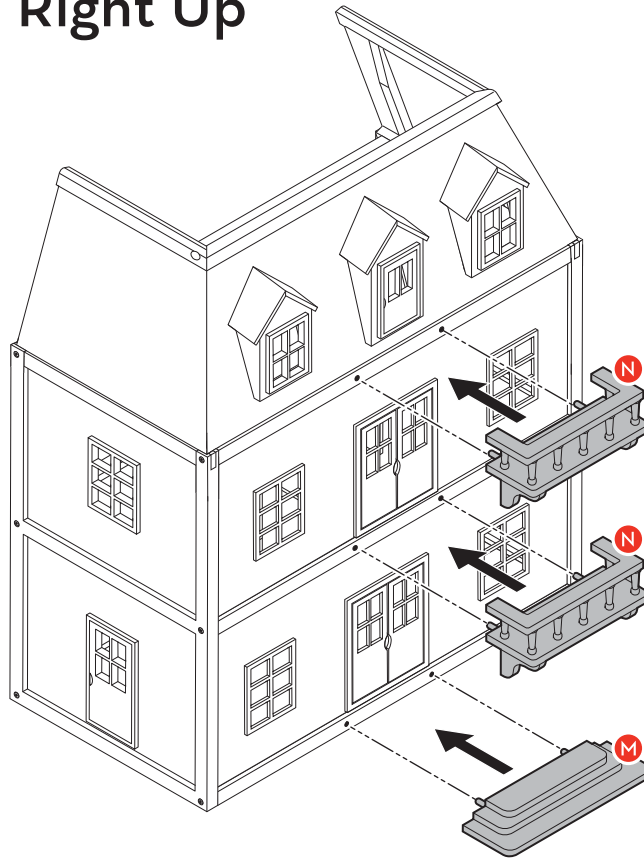


!
IMPORTANT: Slot on the bottom of the dormers hook over the edges of the roof openings.



STEP 9 - Step Right Up

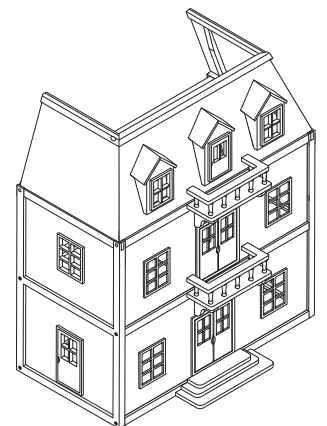
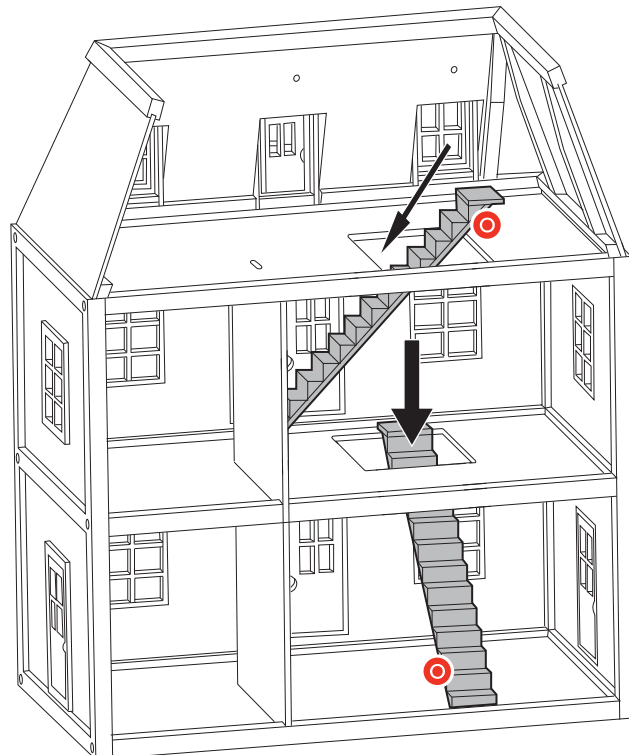
Press the front steps (part M) into the holes along the base of the dollhouse. Press the balconies (part N) into the holes along the top and middle rails on the front of the dollhouse.



Assembled View

STEP 10 - What Fun—You're Done

Rest the staircases (part O) into the openings in the dollhouse's top and middle floors. These can be moved into any orientation you desire.



Assembled View

YOU DID IT!

Now the real fun begins—it's time to let imaginations turn this house into a home! Here are some of the special features of the Multi-Level Wooden Dollhouse:

- **3 STORIES & 5 SPACIOUS ROOMS:** There's plenty of room to let imaginative play blossom and grow! Set up a kitchen, dining room, living room, bathroom, and bedroom.
- **2 REMOVABLE STAIRCASES:** Access the second and third floors in various ways by moving the two wooden staircases. This versatile design option allows kids to rearrange rooms in lots of different ways!
- **OPEN BACK:** It's easy to play in every room and to share the fun with brothers, sisters, and friends.
- **FULLY FURNISHED:** There are 19 sturdy wooden pieces of furniture to fill every room, and lots of options when it's time to set up house. Pieces include cooking range, large table and four chairs, hutch, cabinet, counter with drawers, sofa, small table, two arm chairs, bathtub, vanity, toilet, double bed, end table, and armoire. Working doors and drawers provide extra hands-on fun.
- **5 EXTERIOR DOORS:** Double doors on the main floor and leading to a second-story balcony open extra wide. There are single doors on either side of the main floor, and one on the top floor leading to another balcony, flanked by beautiful dormered windows.
- **BRIGHTLY PAINTED EXTERIOR:** The bright pink exterior with purple trim and roof is made to stand up to years of play.
- **1:12 SCALE:** The dollhouse is sized to fit most standard dollhouse furniture and dolls for even more play options!

ACCESSORIZE

The Melissa & Doug Road Trip Car & Doll Set (#2463) and Doll Family (#2464) are designed to play perfectly with your Multi-Level Wooden Dollhouse! Road Trip includes a wooden car and four wooden poseable dolls; Doll Family is a seven-piece coordinating doll set, including a baby! To find these items and more, visit us at MelissaAndDoug.com!

