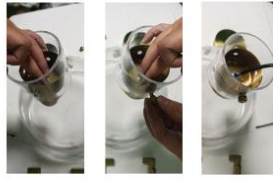




1. Remove the lamp body and all accessories. Handle carefully to avoid collisions with glass components. Gently place the lamp body with the wire inside the glass lampshade.



2. Align the mounting holes on the lamp body and glass lampshade, insert the screws and tighten to secure, ensuring a stable fit. (Repeat the same process on the other side.)



3. Align the lamp post with the remaining two mounting holes and secure the lamp post with screws.



4. Slowly thread the wire through the inside of the lamp post, avoiding pulling or squeezing the wire.



5. Align the relevant holes and use screws to connect the lamp post to the lamp body and tighten.



6. Thread the wire through the ceiling mount, secure the mount, and tighten the screws to firmly install the light fixture on the ceiling. Installation complete!