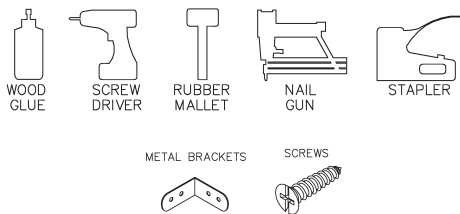
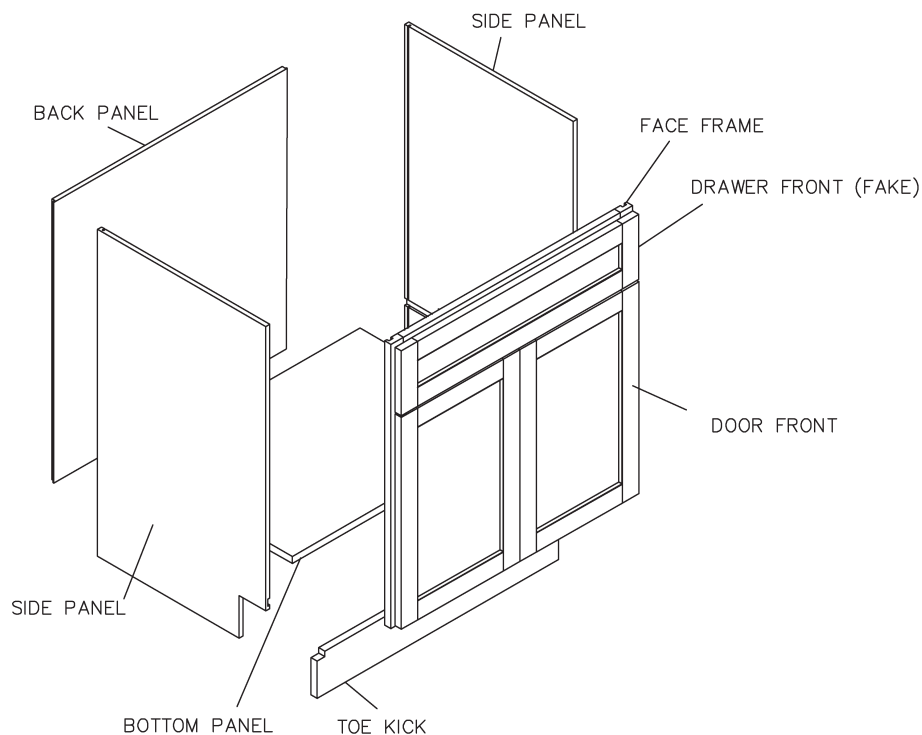
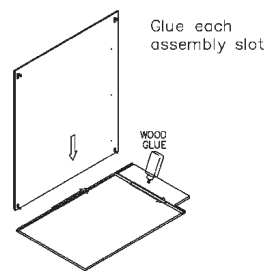


ASSEMBLY INSTRUCTIONS - SINK BASE CABINET



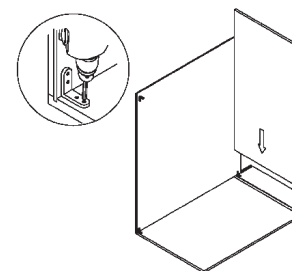
THIS INSTRUCTION APPLIES TO THE FOLLOWING ITEMS:
 SB30, SB33, SB36 ,SB42, VAN24, VAN27, VAN30

STEP 1



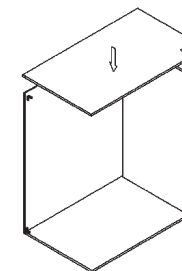
STEP 1: SECURE BACK PANEL TO A SIDE PANEL

STEP 2



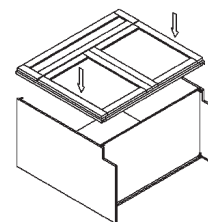
STEP 2: SLIDE THE BOTTOM PANEL INTO THE GROOVE

STEP 3



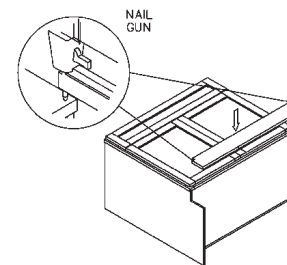
STEP 3: SECURE THE SECOND SIDE PANEL TO THE BACK PANEL AND JOINT BOTTOM PANEL (STAPLE BACK PANEL WHERE SIDE AND BACK MEET)

STEP 4



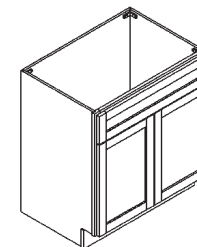
STEP 4: ATTACH THE FACE FRAME TO THE JOINT PANELS

STEP 5



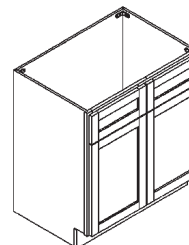
STEP 5: ATTACH TOE KICK TO THE BOTTOM OF THE CABINET

STEP 6



(Single false drawer)

STEP 7



(Double false drawers)