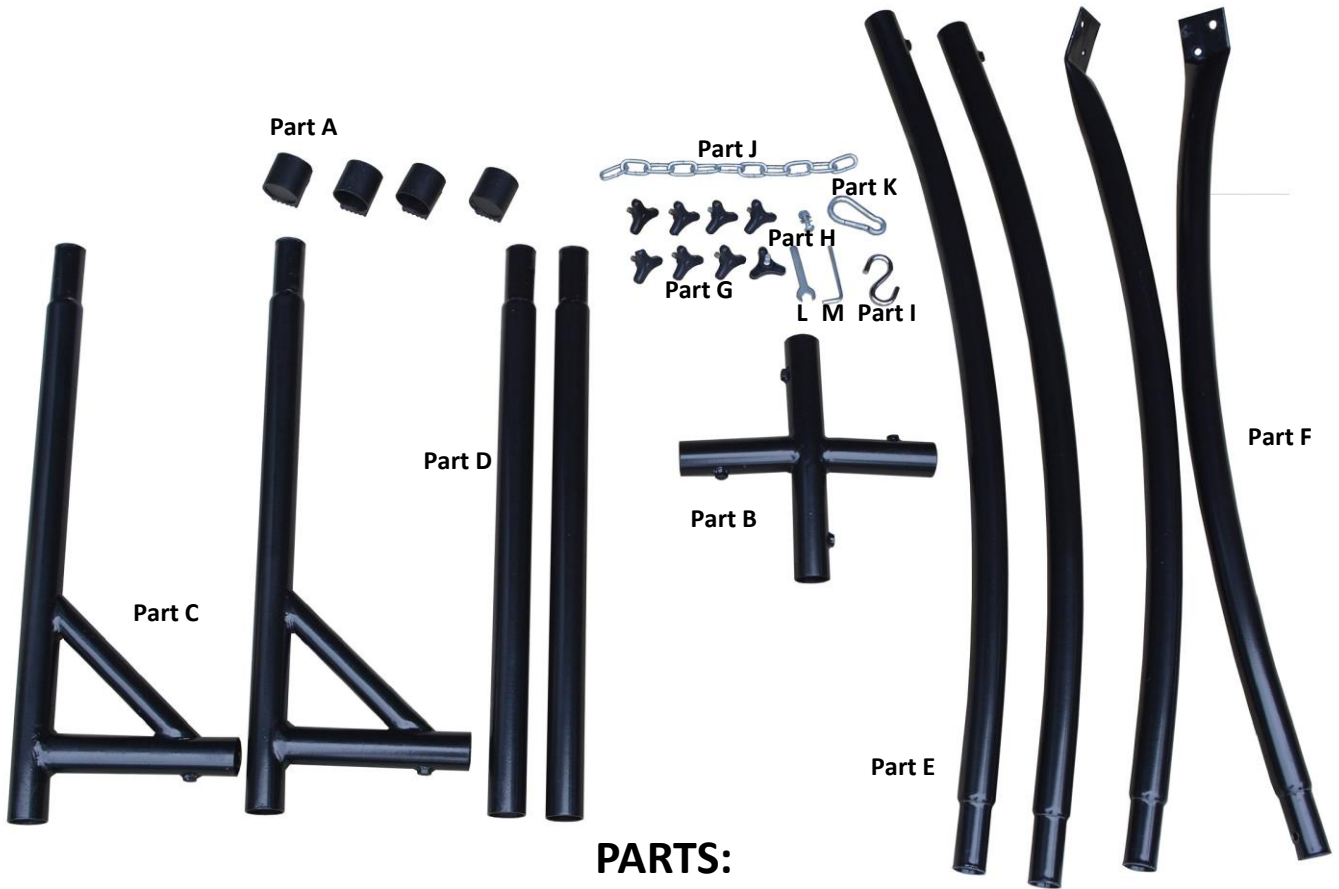


# Assembly Guide

## X-Style Hanging Chair Stand, Model# 4735BL



### PARTS:

Part A: Plastic Feet (x4)	Part H: Hex Bolt/Nut/Washer (x1)
Part B: Middle Connector (x1)	Part I: S-Hook (x1)
Part C: Back Legs (x2)	Part J: Chain (x1)
Part D: Front Legs (x2)	Part K: Carabiner (x1)
Part E: Lower Upright (x2)	Part L: Open End Wrench
Part F: Upper Upright (x2)	Part M: Allen Wrench
Part G: Screw Knobs (x8)	

**CAUTION!** ALWAYS USE STAND ON A LEVEL SURFACE. DO NOT SWING, BOUNCE OR JUMP WHEN USING THIS PRODUCT. SERIOUS INJURY CAN RESULT FROM IMPROPER USE.

The X-Frame stand has a maximum weight capacity of 250 lbs. Never exceed maximum weight capacity of the stand, or hanging chair being used. Inspect hooks and hardware before use to assure all connections are tight and secure. If the functionality of any hardware has been compromised in any way, do not use this product as doing so could result in serious injury. Before each use, make sure base is secure and located on a flat level surface. Inspect overall condition before using this product. Children should never use this product without adult supervision.

**Care Instructions:** For maximum life of this product, it is recommended that the unit be taken out of the elements during extreme weather conditions. Clean stand with a mild soap and warm water. Dry with cloth.





Figure 1

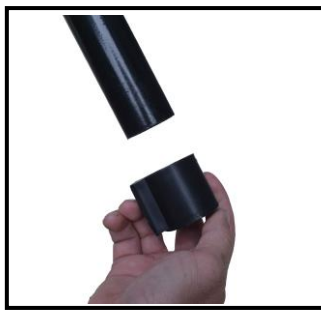


Figure 2

**Step 1: Locate plastic feet (Part A) and Legs (Parts C &D). Slide the plastic feet (Part A) onto the non-tapered end on each leg (Part C & D). (Figure 1 & 2)**



Figure 3

**Step 2: Locate middle connector (Part B) (Figure 3). Starting with the back legs (Part C) align hole on tapered end of leg with one of the holes on the middle connector (Part B) (Figure 4) Insert taper into middle connector until holes align. (Figure 5). Locate one of the screw knobs (Part G) (Figure 6) and screw into hole until the screw is fully inserted (Figure 7). NOTE: You may have to wiggle the pieces so screw knob can get fully tightened.**



Figure 4



Figure 5



Figure 6



Figure 7



Figure 8

**Step 3: Repeat above procedure with second back leg (Part C) making sure the two back legs are next to each other as in Figure 8.**



Figure 9

**Step 4: Locate front legs (Part D) and repeat above procedure to finish the base as in Figure 9.**



Figure 10

**Step 5: Locate lower uprights (Part E) and insert the tapered end into the upright base of the back legs (Part C) (Figure 10). Make sure holes are aligned and secure with screw knob (Part G). Make sure the screw knob is fully tightened. Repeat with the second lower upright.**



Figure 11



Figure 12



Figure 13

**Step 6: Locate both upper uprights (Part F). Hold both uprights together so that the holes on the flat end align (Figure 11). On the lower of the two holes, place bolt (Part H) through hole making sure there is a washer on each end. Place nut on end of bolt and finger tighten (Figure 12). Next, locate the S-hook (Part I) and insert one end of the s-hook through the upper hole. (Figure 13). With the S-hook through the hole, tighten the bolt (Part H) using the supplied open ended wrench and Allen wrench (Parts L & M).**

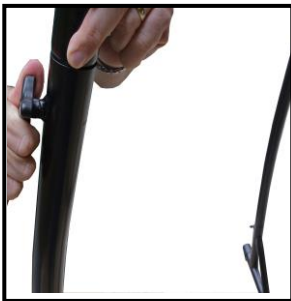


Figure 14

**Step 7: With the upper upright assembly completed, place the tapered end of the upper uprights into the lower uprights. Get the holes to align and tighten using 2 screw knobs (Part G) (Figure 14).**



Figure 15

**Step 8: Locate chain (Part J) and carabiner (Part K). Place carabiner through chain link on end of chain, and place chain onto frame by slipping link onto S-hook (Figure 15). Adjust chain placement for height preference.**



**ALERT: WEIGHT CAPACITY IS 250 LBS. NEVER EXCEED WEIGHT CAPACITY OF STAND OR HANGING CHAIR YOU ATTACH.**



Assembled Stand



Call or email for questions or missing parts. (800) 295-6758

Email: [customerservice@algomanet.com](mailto:customerservice@algomanet.com)