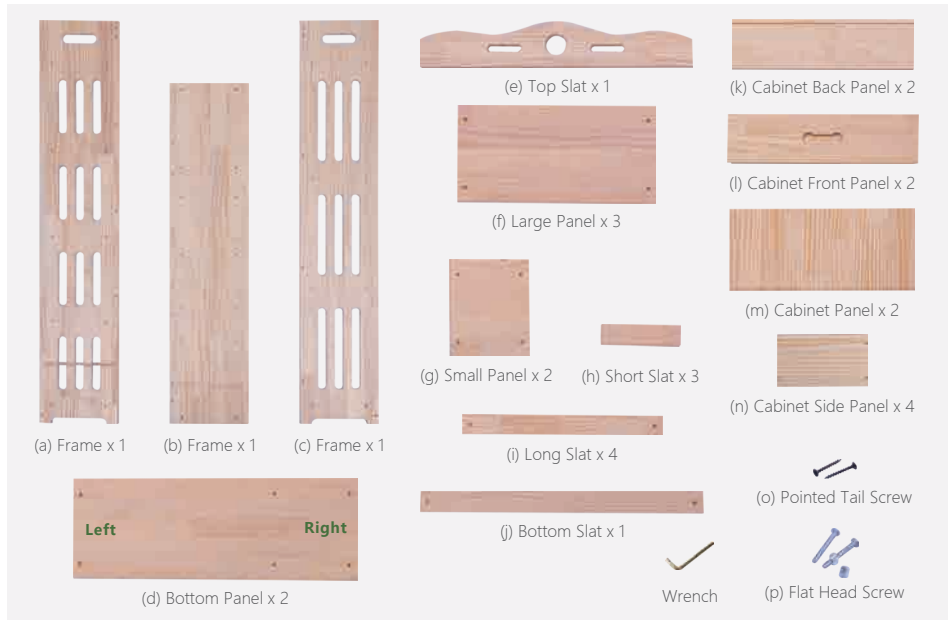


USER GUIDE

BOOKSHELF

Natural / Stylish / Unique

HARDWARE



ATTENTION

- ① Please always read and follow the assembly, maintenance and operating instruction.
- ② Do not discard any of the packaging until you have checked that you have all the parts and pack of fittings.
- ③ Keep children away during assembly. This item contains small parts which can be swallowed by children.
- ④ Wipe frames with water gently, do not use bleach, acid, or other solvents.
- ⑤ Check all hardwares before assembly. Incorrect parts used may lead to damage.



Scan the QR code to view the assembly video.

CABINET ASSEMBLY



- ① Position Side Panels (n) and Front Panel (l) as picture shown, secure with Pointed Tail Screw (o).



- ② Position and insert Panel (m) to slot.



- ③ Insert Back Panel (k) to slot as picture shown, secure with Pointed Tail screw (o).

ASSEMBLY INSTRUCTIONS



- ① Position Frame (a), Bottom Slat (j), and Bottom Panel (d), secure with Flat Head Screws (p).

© 2020-2021 by Pundarika LLC - MoNiBloom.com



- ② Position and secure Large Panels (f) with Flat Head Screws (p).



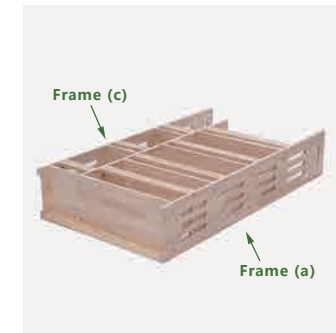
- ③ Position and secure Long Slats (i) with Flat Head Screws (p).



- ④ Secure Frame (b) with Flat Head Screws (p).



- ⑤ Position Short Slats (h) and Small Panel (g), secure with Flat Head Screws (p).



- ⑥ Position and secure Frame (c) with Flat Head Screws (p).



- ⑦ Secure Bottom Panel (d) with Flat Head Screws (p).



- ⑧ Install Top Slat (e) with Flat Head Screws (p).



- ⑨ Insert cabinets and done.