

Software Instruction Manual

APP.

Please read this manual carefully before use and keep it properly.

The ScentArea intelligent fragrance application (APP) needs to be used in conjunction with a fragrance spreading device with WIFI function, compatible with iOS and Android systems, and supports both Chinese and English languages. The first time connecting a device in WIFI mode, it is necessary to complete the configuration within the same local area network (mobile phone and device connecting to the same WiFi); AP mode can achieve device control in a network-free environment. It has 5 groups of time period modes, and each mode can be freely set with the combination of weekdays, time periods, startup running time, and shutdown stopping time, etc., which is suitable for various usage scenarios. Users can customize the total capacity, current oil level, and fuel consumption standards of the oil bottle, intelligently calibrate the remaining days of remaining oil usage, customize the essential oil fragrance used by the device, and view the device status in real-time. Administrators can connect devices to the network and authorize device operation permissions to sharers through phone number sharing or QR code sharing. Authorization can also be revoked, and sharers do not have sharing permissions, making the device more secure. Device grouping function: Users can customize group names, move and add devices to corresponding groups for batch management, and set relevant data in batches for devices in the same group.

I.App Installation and Registration Instructions

- ① Scan the QR code to download the app "ScentArea"
- ② User registration and password setting
- ③ APP permission configuration, including location services, Bluetooth connection, and sending notifications (recommended to allow all)

II.App and Device Pairing Mode

- ① AP Mode: Press and hold the UP button on the device for 15 seconds (with 4 beeps) to activate AP mode (this operation needs to be repeated if you need to reconnect after a power failure), then find M50-ALiOS on the mobile WLAN, click connect, and the default password for the device is 12345678. Open ScentArea to add a device and enter AP mode (in AP mode, only one fragrance diffuser device can be connected to one phone).
- ② WIFI Mode: Long press the MODE button on the device for 15 seconds (with 4 beeps) to reset, open ScentArea to add the device, add the currently connected WIFI on the phone, and enter the current WIFI password for configuration.



III.Homepage Function Description

- ① Scan: Scan the QR code of the other person's shared device;
- ② Search device: Quickly find the specified device based on its name;

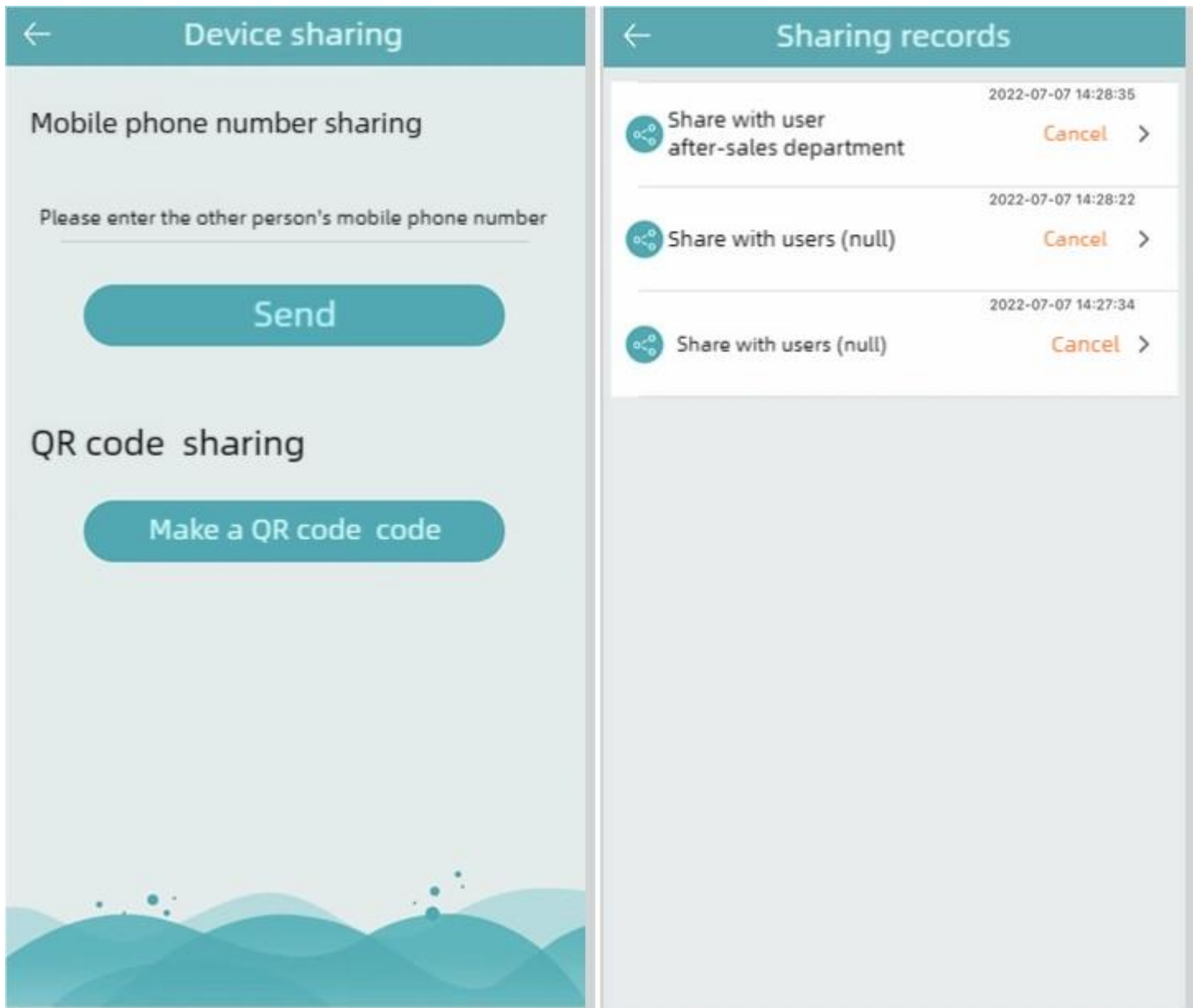
③ Add device: Divided into AP mode and WIFI mode;

④ Window dropdown refresh: Displays configured devices within the local area network;

- After successfully configuring the device in WIFI mode, you can long press the device bar to perform operations such as placing the device on top or cancelling placing the device on top, renaming the device, sharing the device, deleting the device, etc.

- Sharing device: Enter the other party's registered phone number to share the device, or generate a QR code to share the device. The other person can operate the sharing device. You can view the sharing record in the "My" menu, and cancel the sharing at any time.





IV. Device Operation Instructions

- Oil bottle total capacity: Custom input value, input according to the actual device oil bottle capacity;
 - Current fuel level: Enter the actual amount of fuel added;
 - Fuel consumption: Enter the actual consumption value of the fragrance type per unit time;
 - Fragrance type: Enter the name of the essential oil fragrance type currently being added;
 - Calibration: Determine the remaining days of use for the current oil level of the device;
 - Operating status: Remote operation of the device on and off;
 - Fan: Remote operation of device fan on and off;
 - Device lock: Remote locking and unlocking of device;
 - Working mode: 5-stage custom settings for editing week settings, timed on/off time periods, fragrance frequency settings, etc;
 - Device address: The network location address is obtained after the device configuration is successful.
- The signal lights are in order of atomization abnormality warning, air pump abnormality warning, fan abnormality warning, and low battery warning.

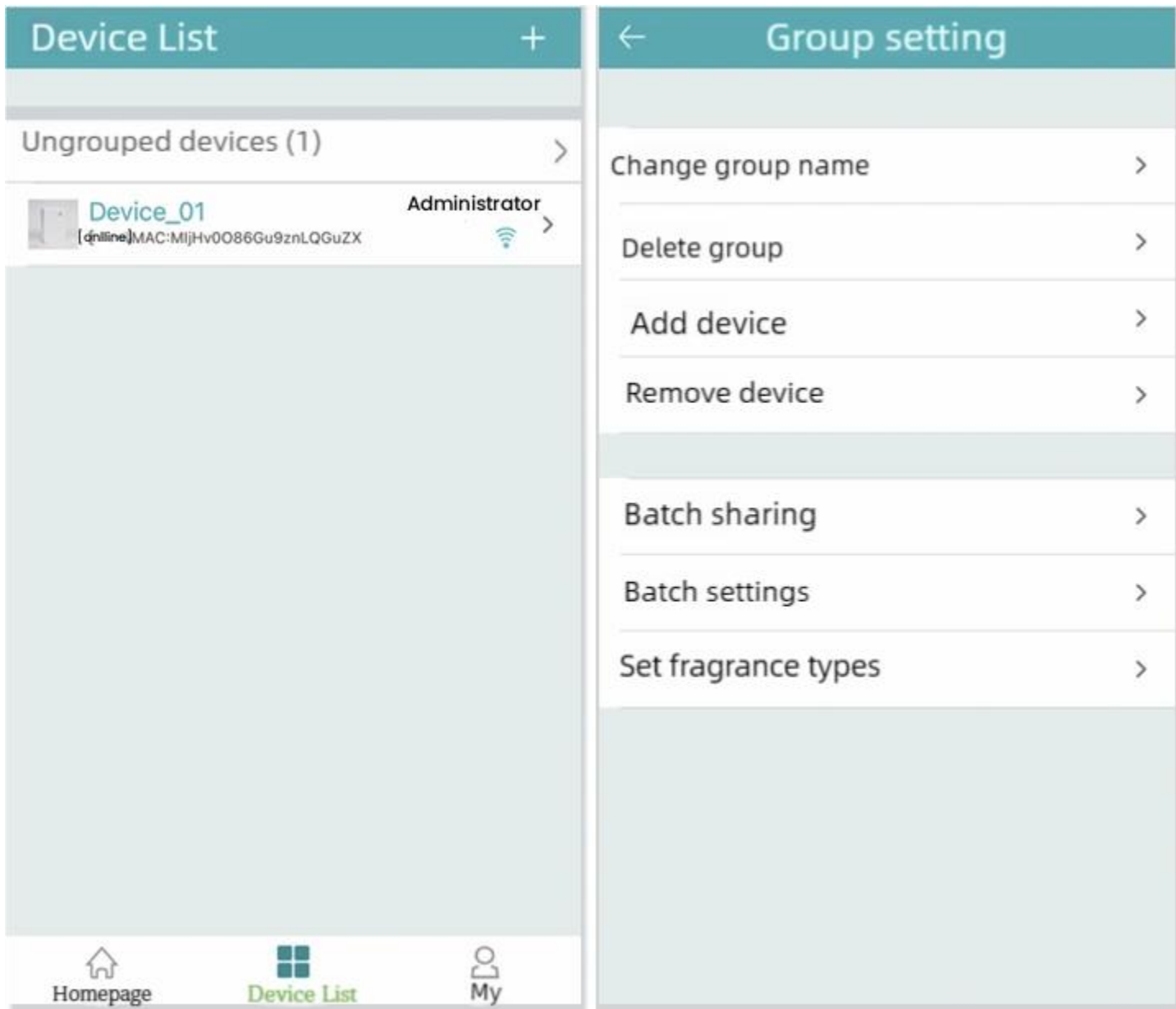
More device information: Take a photo or select an image from the album to change the device profile picture or scene, current group information of the device, enabling or disabling the message push function, etc.



V.Device List

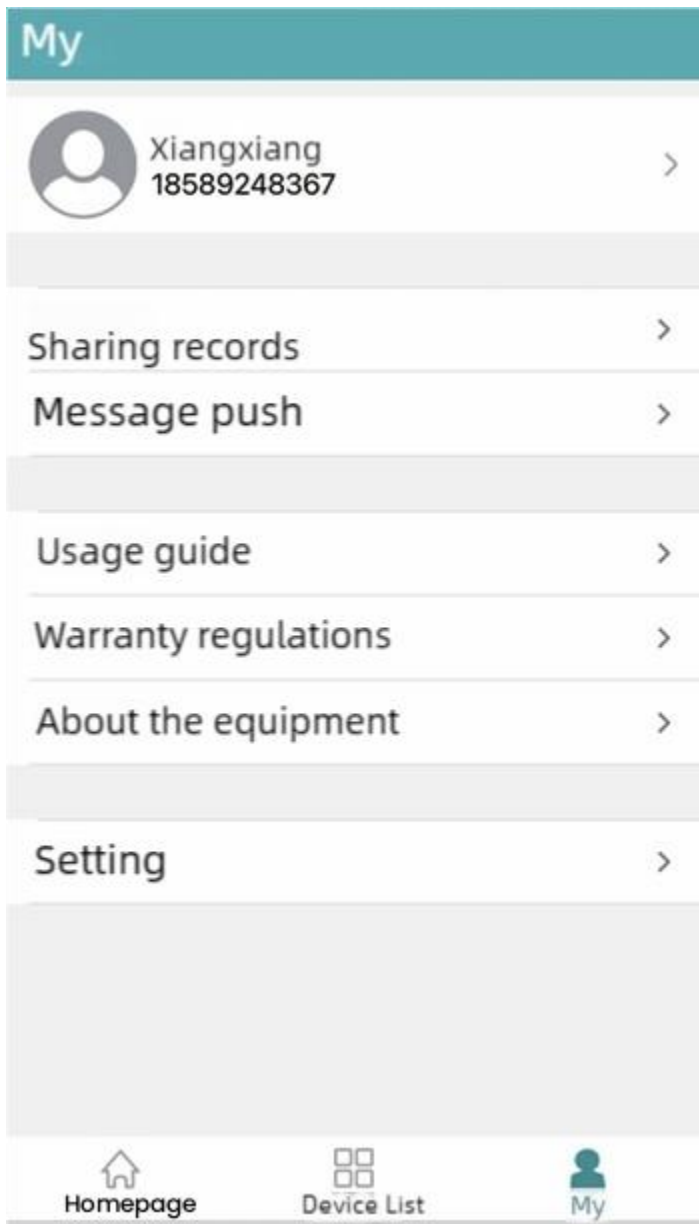
After successful device configuration, it defaults to the "ungrouped devices" list and can be customized to create other groups. Click on the group bar to manage groups

- Change group name: Change the name of the newly created group;
- Delete group: Delete newly created groups;
- Add device: Add devices from ungrouped devices to the newly created group;
- Remove device: Remove the specified device from the newly created group;
- Batch sharing: Share all devices in the entire newly created group;
- Batch settings: Control the on/off and working modes of devices within the group;
- Batch fragrance types: Set the essential oil fragrance types for all devices within the group.



VI.My

- Registration account information setting and password modification;
- Sharing records: Historical sharing records, sharing authorization can be cancelled;
- Message push: Insufficient essential oils, device malfunction, etc;
- Usage guide: Brief instructions on device operation;
- Warranty regulations: The warranty terms for the device after it is manufactured.
- About the device: Precautions for device use, maintenance and troubleshooting, etc;
- Settings: Feedback, version information, and logging out of the current login account.

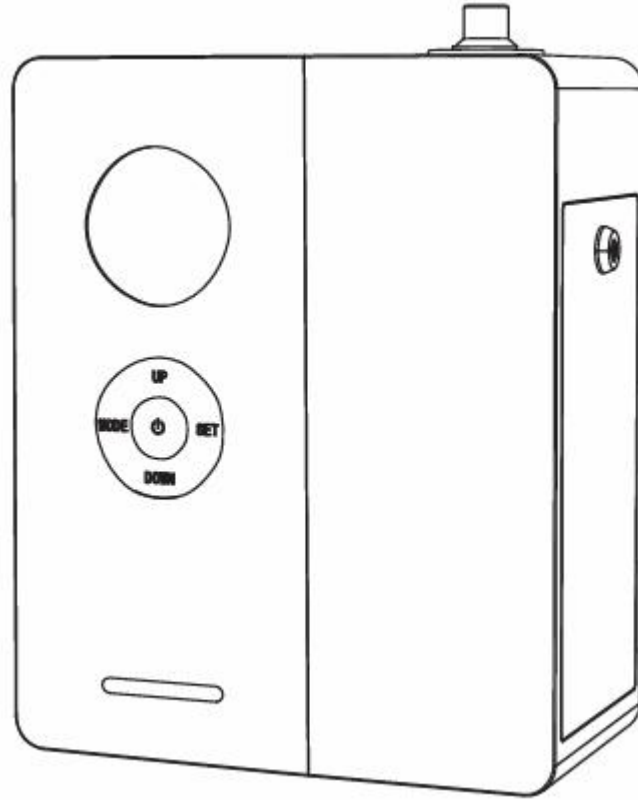


VII. Notes

- ① The ScentArea APP control is only applicable to fragrance diffuser devices with a WIFI function;
- ② When connecting the aroma diffuser for the first time, the software needs to be on the same local area network as the fragrance diffuser (the mobile phone and the device should connect to the same Wi-Fi network).
- ③ The software will follow the language of the system (Chinese or English);
- ④ If the fragrance diffuser is not within the last configured network range, changing to another network requires resetting the device to an unconnected state;
- ⑤ The wireless WIFI module only supports the 2.4GHz frequency band.
- ⑥ When the APP cannot connect to the device due to disconnection login error, or signal problem, please press and hold the device MODE button for 15 seconds (with 4 beeps) to reset and reconfigure.

Intelligent Fragrance Device

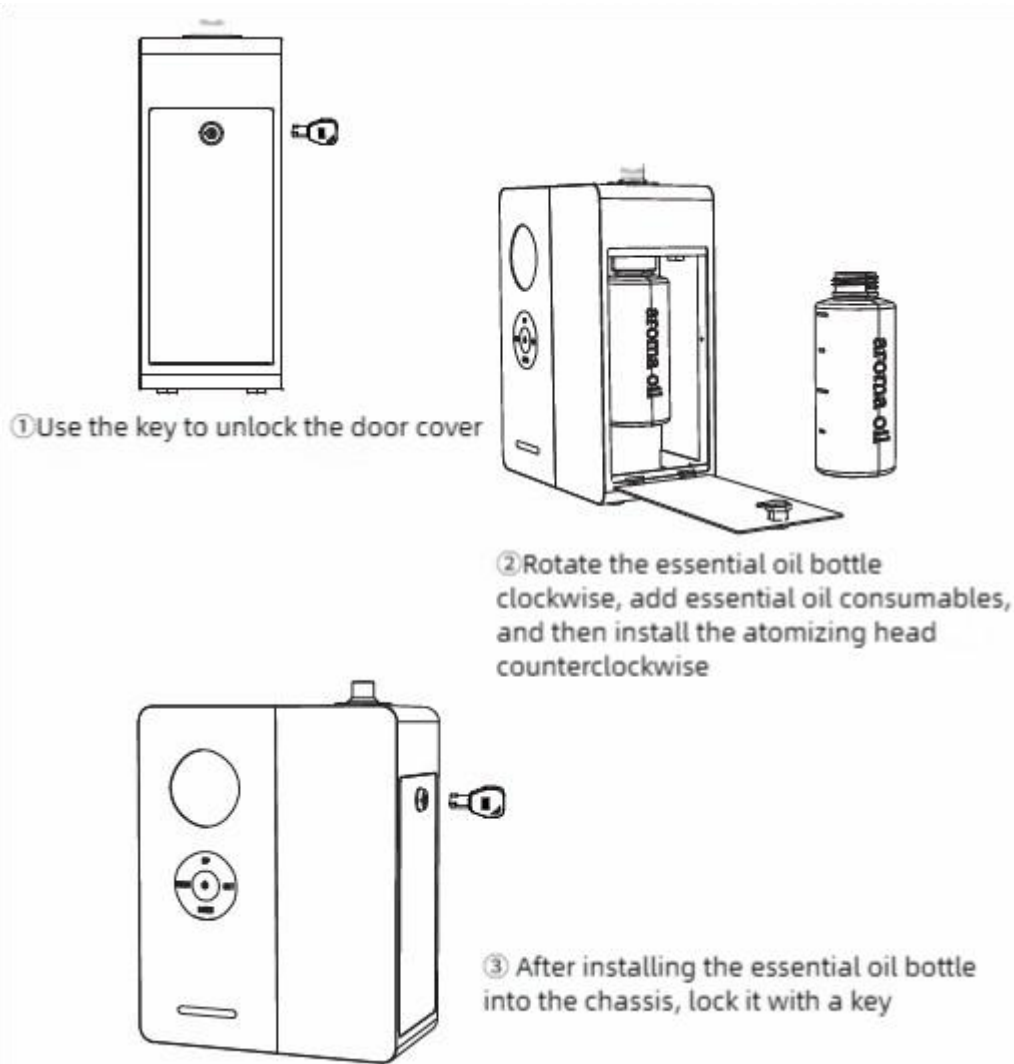
User Manual



Please read this manual carefully before use and keep it properly.

Dear user: Please read the manual carefully before using this product, and keep it safe for future reference. Thank you.

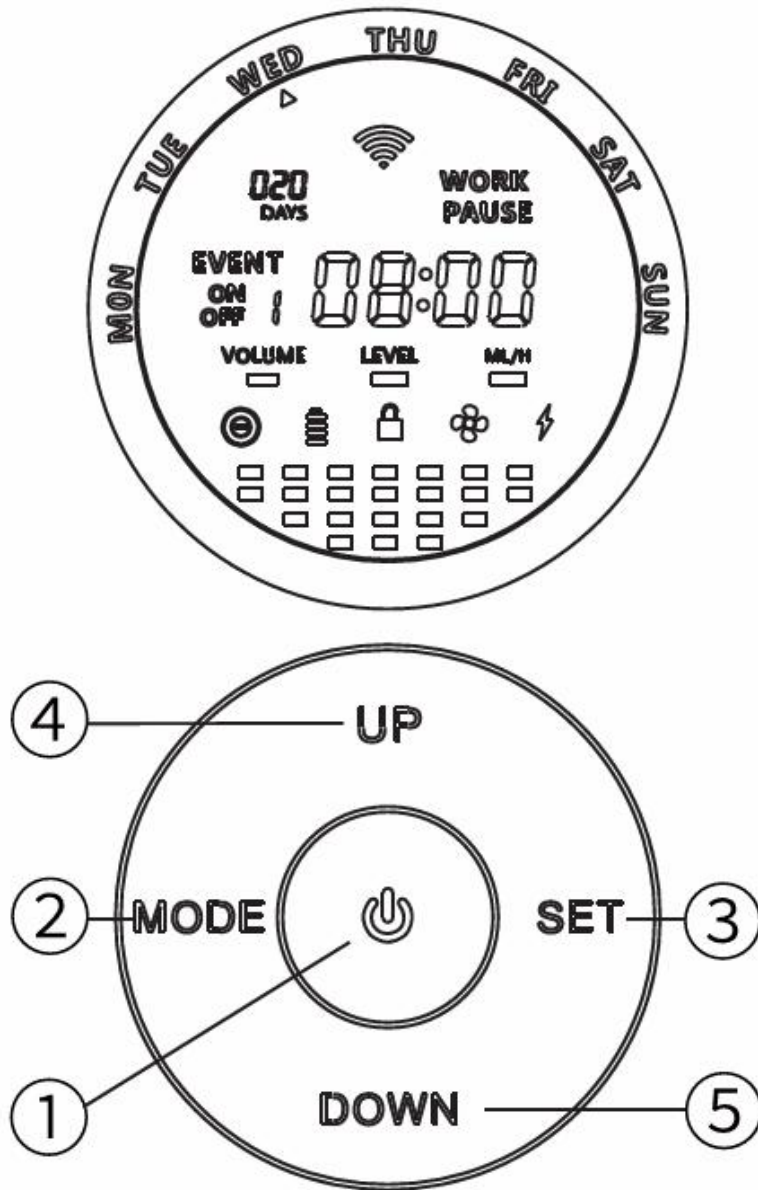
I. Device Operation Method:



II. Packaging List

Intelligent Fragrance Device x1
Power Adapter x1
Bottle x1
Keys x2
Spare Atomizer Core x1
User Manual x1

III.Function Keys



- ① Light on/off, week selected, temporary shutdown button
- ② Working mode, frequency, page selection setting button
- ③ Clock, week switching and setting buttons
- ④ Increase value button, gear button
- ⑤ Reduce value button

Press and hold the MODE button for 5 seconds to restore the factory default settings and reset the WIFI module. Press and hold the SET button for 5 seconds to lock all the keys, and press and hold it again for 5 seconds to release the lock. Single touch ON/OFF button, pause and start spraying; long press for 5 seconds to turn off and turn on the three-color breathing light.

Oil Quantity	>50%	<50%	<25%
Light Color	Green	Blue	Red

IV.Clock Setting-24-hour System and Setting of Essential Oil Consumption Parameters

① The operation time of the device is based on the local clock setting. The procedure is as follows: Press the SET key to enter the clock switching setting mode, then use the UP and DOWN keys to incrementally adjust the hours, minutes, and the current day's weekday (e.g., 8:30 a.m. on Monday).

② Press the SET key again to switch to VOLUME essential oil bottle total amount setting>LEVEL current oil level (real-time liquid level) setting>ML/H atomization measurement reference standard input. Press the UP and DOWN keys to add or subtract values in sequence to obtain the known number of days the essential oil can be used, and displayed in the Days window

V.Working Mode and Spray Setting, 5 Groups of Different Modes can be Set.

Press the MODE key to turn the page, and then press the SET key to switch to set the startup time, shutdown time, work week combination setting, spray duration, and spray pause duration.

- A. For example, set the startup time to "8:00 am on Monday", press the MODE key to select the startup time and week combination setting window, press the SET key to move the switching time value, press the UP and DOWN keys to set the hour and minute, then press SET to switch to the week combination window, press UP and DOWN keys, move the week table, and press the middle key to select ▲ to enable the desired week combination. If it is not enabled, ▲ will not be selected, for example, selecting Monday and Wednesday combinations. After setting the startup time, press the MODE key to flip to the shutdown time setting window. Refer to step A for the operation steps.
- B. Spray duration, spray pause duration: After setting the startup and shutdown procedures, press the MODE key to turn the page and select the spray duration and spray pause duration one by one. Simply press the UP and DOWN keys to select the values. For example, spray for 10 seconds and pause for 60 seconds.
- C. After setting steps A and B, the first set of working modes has been completed. Press the MODE key to turn the page and set the remaining 4 mode combinations. If no other mode combinations need to be set, simply press the MODE key to skip the remaining 4 mode setting windows and return to the working page. At this point, you can enjoy the perfect fragrance experience.

VI.Spray Frequency

The opening time of spray is from small to large: 5S, 10S, 15S, 20S, 25S, 30S, 35S, 40S, 45S, 50S,...300S. The pause time of spray is from small to large: 5S, 10S, 15S, 20S, 25S, 30S, 35S, 40S, 45S, 50S,... 300S. The energy column of the LCD display will fluctuate when spray is applied, and it will be still when spray is not applied.

VII.Device Maintenance

When the device is not in use for a long time, 95% industrial alcohol needs to be added to the essential oil bottle to clean the internal nozzles and other components of the device. Note: The device should be maintained at least once every 1-2 months.

Specific Operation: Add 95% industrial alcohol to an empty bottle, turn on the device and run for 10-15 minutes, then turn off the device, then drain all the alcohol from the bottle, and screw it into the screw mouth.

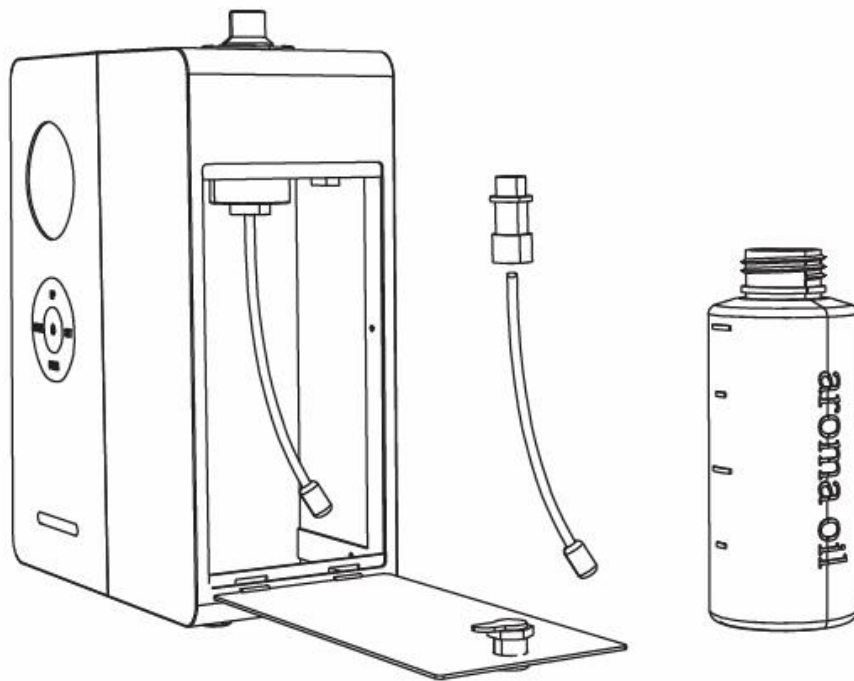
VIII.Product Parameters

Size: W182xD92xH250mm	Weight: 2.25kg
-----------------------	----------------

Voltage: DC12V	Capacity: 200ml
Power: 8W	Application Scope: 300 - 500 m ³

IX. Replace the Atomizer Core

The atomizer head assembly consists of: oil bottle, suction tube, filter, and atomizer core. First, unscrew the essential oil bottle, remove the atomizer core, and pull out the suction tube. Then, insert the new atomizer core into the main body of the atomizer head, and align the suction tube with the small hole inside the atomizer core and press it firmly.



X. Notes

1. Before using this product, please read the user manual carefully and keep it properly stored.
2. When loading essential oils into the device, it must be kept upright and facing upwards. Do not invert or tilt it, otherwise it may damage the internal components of the device.
3. Do not use overloaded power sockets, damaged power cords, or broken power plugs. This may endanger your safety and may cause a fire.
4. Do not attempt to open the interior of this product. If you notice any abnormalities with the product, please contact us immediately.