



20 : 00

estimated
assembly time



2 or more

people required

Ok, let's
get started!



- Put on mood music!
- To prevent damage to product, use the clean side of package carton or rug as working surface.
- In the event of missing or damaged parts, delivery problems etc., please reach out to our team. We will be happy to fix the problem!

care guide

- Clean regularly with a soft and dry cloth.
- To protect finish, avoid use of abrasive cleaners.
- Wipe up spills immediately. Please!

ⓘ **While assembling the product, tighten the bolts up to 50%. Once all parts are in place, only then fully tighten the bolts.**



product parts



A - Left
Metal Leg
x1



A - Right
Metal Leg
x1



B
Tabletop
x1



C
Rod
x1



D
Metal Base
x1

what's included



(E) - Flat Washer
(20mm x 8mm)
x14



(F) - Lock Washer
(15mm x 8mm)
x14



(G) - Bolt
(M6 x 20mm)
x14



(H) - Bolt
(M6 x 10mm)
x12



(I) - Allen Key
(Ø4x 110mm)
x1

assembly instructions

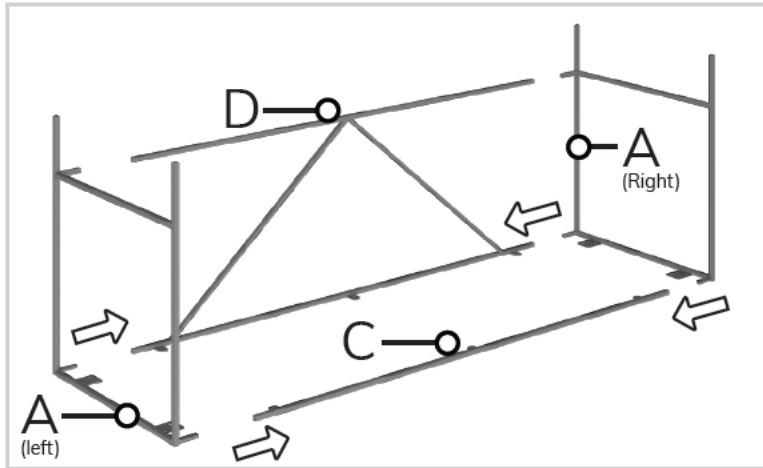
Friendly Tip: Take a deep breath going in. This may be a tricky part, but nothing too overwhelming. Just follow these steps to the T and the outcome will be worth it!



- ⓘ While assembling the product, tighten the bolts up to 50%. Once all parts are in place, only then fully tighten the bolts.

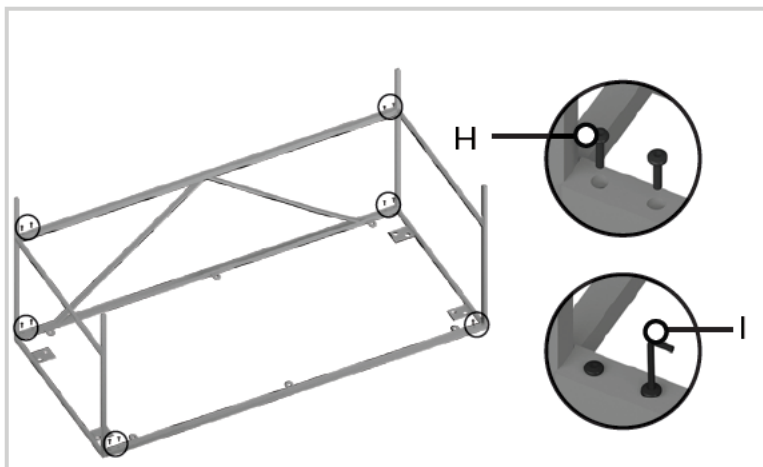
step 1:

First, we will start by assembling the metal base of the table. Set all base parts on a rug or cardboard and turn them upside-down to begin assembly. Taking this image as reference, insert table legs (A-Left and A-Right) into metal rods (C and D)



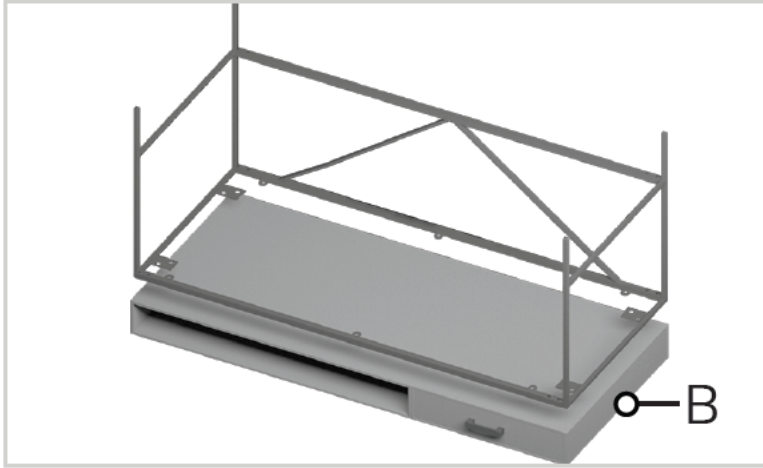
step 2:

Once all base parts are aligned together, fix them in place using bolt (H). See the highlighted areas in this image to know where to insert bolt (H). Use allen-key (I) to tighten all points and secure the base together.



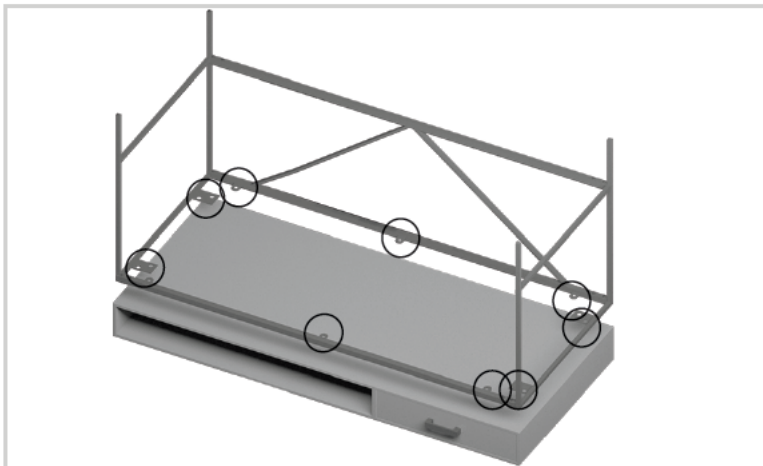
step 3:

Next, turn the tabletop (B) upside down and set the assembled metal base on top of it as shown in this image.



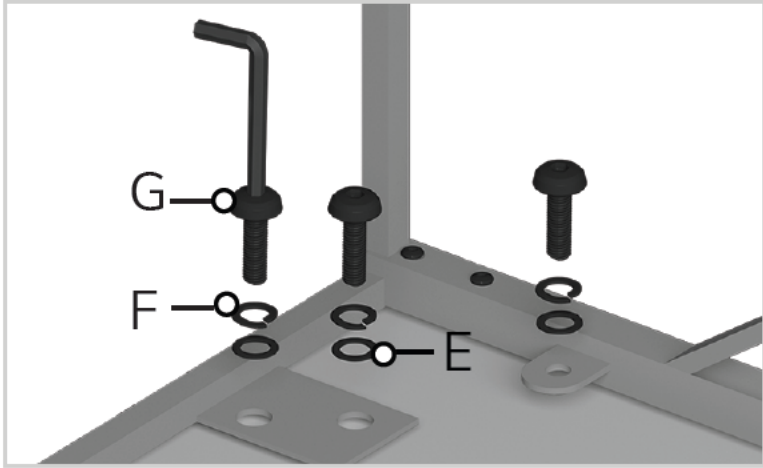
step 4:

See the areas highlighted to know where to tighten bolt (G) and washers (E & F).



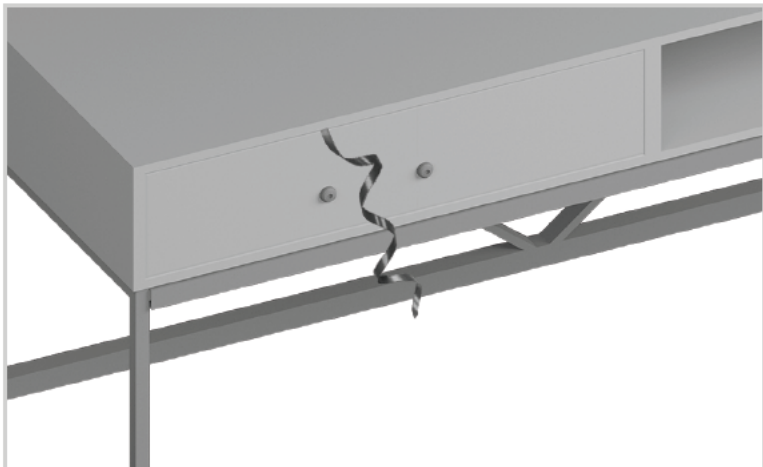
step 5:

Place lock washer (F) on top of washer (E) and then bolt (G) on top of lock washer (F). The order from the bottom should be- E, F, G.
Secure all the points using allen-key (I).



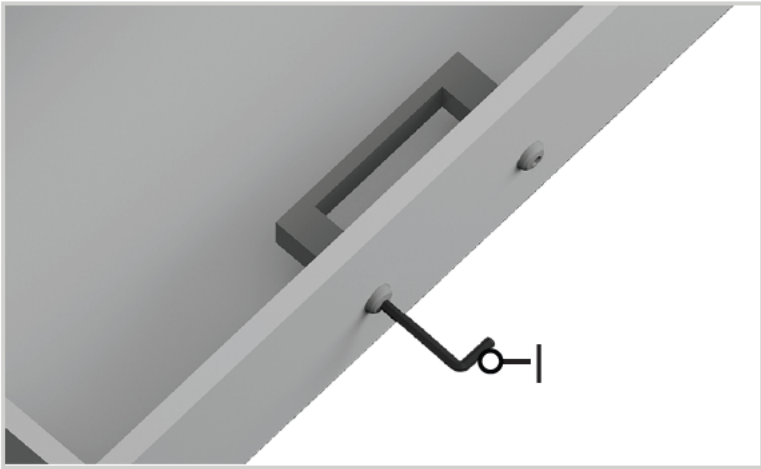
step 6:

Pull on the ribbon to open the drawer.



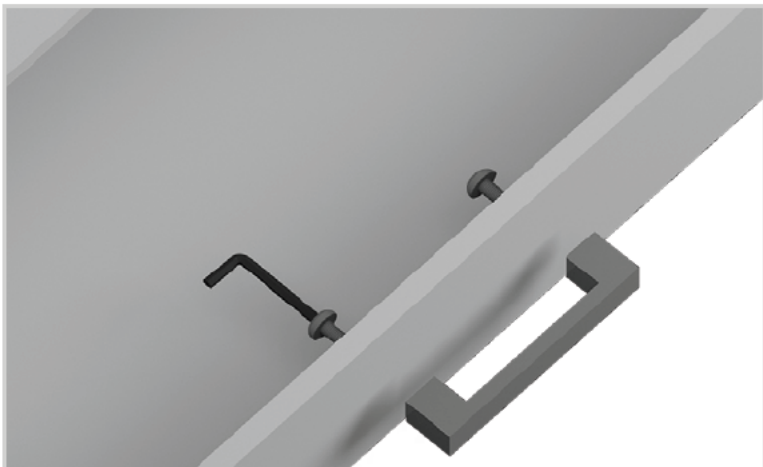
step 7:

Using allen-key (I), detach the handle fitted inside the drawer.



step 8:

Place the handle outside the drawer and reattach it using the bolts you removed in step 6. Tighten it in place using allen-key (I).



Voila! Your table is now assembled and secure!



