








Product	Assem. Width	Assem. Depth	Assem. Height	Assem. Weight Lbs.	Carton # of Boxes	Carton Width	Carton Depth	Carton Height	Carton Weight Lbs.	Stocking Fabric	Cushion or Umbrella Hole Detail
 ② ④ Stacking Armchair Seat Height 17.75"	23.25"	24"	33.5"	8	1	25"	24	39"	② 18 ④ 34	PR	1EDCH*
 ② ④ Stacking Side Chair Seat Height 18"	17.75"	24"	33.5"	7	1	30"	24"	42"	② 16 ④ 30	PR	1EDCH*
 36" Square Dining Table	36"	36"	29.75"	39	1	40"	40"	6"	43		no umbrella hole
 45" Square Dining Table	45"	45"	29.75"	53	1	47"	47"	6"	58		2" (50mm)
 63" Rect. Dining Table	63"	45"	29.75"	71.5	1	65"	47"	6"	78		2" (50mm)

MATERIALS

Powder coated aluminum is durable and lightweight. The rustproof nature of the frame offers high quality and strength. Composite cord is PVC coated polyester thread woven into a cord. Like our composite sling it is a material ideally suited to the outdoor environment. Solution-dyed olefin fabric is an economical option available on stocking cushions that combines durability with affordability.

② ④ Indicates that the item is available in a quantity of TWO or FOUR only.

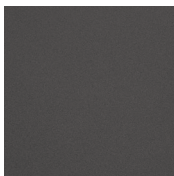
*Chair pads for the Arm and Side Chair are optional, sold separately, and available in the stocking material shown below.

Chair pads are also available as Made To Order (MTO) with Customer's Own Material (COM) with a minimum of two cushions, or with any Special Order Fabric (SOF) with no minimum order. Pricing and lead times will vary; please call for more information.

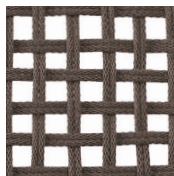
Chair pads feature quick-dry construction with vented bottom for drainage. Stocking cushions in Olefin will be constructed with reticulated foam and ties in the back. Made To Order cushions will be constructed with a waterproof bag encasing the foam with hook and loop tabs on the bottom.

FRAME

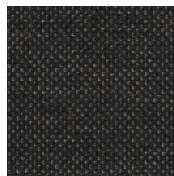
STOCKING CHAIR PAD FABRIC



CARBON POWDER COATED ALUMINUM C






MOCHA COMPOSITE CORD T112



PEPPER SOLUTION-DYED OLEFIN PR



Product	Assemb. Width	Assemb. Depth	Assemb. Height	Assemb. Weight Lbs.	Carton # of Boxes	Carton Width	Carton Depth	Carton Height	Carton Weight Lbs.	Stocking Fabric	Cushion Details
 ① ② EDCCT112 Stacking Club Chair Seat Height 15.25"	26.5"	25.25"	30"	15	1	37"	30"	40"	① 17 ② 32	PR	1EDCC <i>no notches</i>
 ① ② EDLST112 Stacking Loveseat Seat Height 15.25"	47.25"	26.75"	30"	24	1	52"	30"	33"	① 28 ② 52	PR	1EDLS <i>1.5" center back notch</i>
 EDTAC Coffee Table	42"	26"	14"	27	1	44"	28"	6"	31		
 EDETC End Table	16"	16"	19"	10.5	1	20"	20"	6"	13		

① ② Indicates item can be ordered individually or in packs of TWO.

Cushions for the Club Chair and Loveseat are optional but recommended, sold separately, and available in the stocking material shown below.

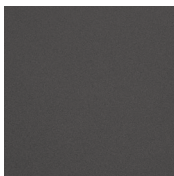
Cushions are also available as Made To Order (MTO) with Customer's Own Material (COM) with a minimum of two cushions, or with any Special Order Fabric (SOF) with no minimum order. Pricing and lead times will vary; please call for more information.

Cushions feature quick-dry construction with vented bottom for drainage. Stocking cushions in Olefin will be constructed with reticulated foam and ties in the back. Made To Order cushions will be constructed with a waterproof bag encasing the foam with hook and loop tabs on the bottom.

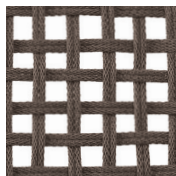
MATERIALS

Powder coated aluminum is durable and lightweight. The rustproof nature of the frame offers high quality and strength. Composite cord is PVC coated polyester thread woven into a cord. Like our composite sling it is a material ideally suited to the outdoor environment. Solution-dyed olefin fabric is an economical option available on stocking cushions that combines durability with affordability.

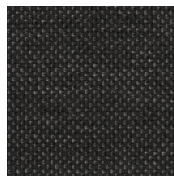
FRAME



CARBON POWDER COATED ALUMINUM C



MOCHA COMPOSITE CORD T112



PEPPER SOLUTION-DYED OLEFIN PR

STOCKING CUSHION FABRIC