

OVENTE®

MULTI-PURPOSE ELECTRIC
BLADE GRINDER
CG620 SERIES



Before use, please read this manual thoroughly and save for future reference.

ovente.com



MULTI-PURPOSE ELECTRIC
BLADE GRINDER
CG620 SERIES

MULTI-PURPOSE ELECTRIC BLADE GRINDER

CG620 SERIES

TABLE OF CONTENTS

IMPORTANT SAFETY	4
PARTS AND FEATURES	5
USING YOUR BLADE GRINDER	7
GRINDING TIPS	8
CARE & MAINTENANCE	9



IMPORTANT SAFEGUARDS

When using this blade grinder, basic safety precautions should always be followed, including the following:

Read all instructions carefully before using the blade grinder.

- ⚠ Check that the voltage of your wall outlet corresponds to the one shown on the rating plate.
- ⚠ Do not operate any appliance with a damaged cord or plug, or after the appliance malfunctions, or is dropped or damaged in any manner. Contact your service provider for assistance.
- ⚠ If the supply cord is damaged, discontinue use, and contact after the appliance malfunctions, or is dropped or damaged in any manner.
- ⚠ Unplug from outlet when not in use, and before taking off, putting back, and cleaning parts. Make sure all parts are assembled before plugging in. To reduce the risk of fire or electric shock, do not dismantle the appliance.
- ⚠ Do not let cord hang over the edge of tables or hot surfaces.

- ⚠ Do not immerse the motorized base in water or other liquids, or place in dishwasher. Damage to the unit will occur if submerged in liquid or filling liquid into the container. Only the transparent top cover may be immersed.
- ⚠ The use of accessories not recommended by Ovente may cause injuries to persons.
- ⚠ Check grinding bowl for presence of foreign objects before using.
- ⚠ Do not operate the appliance for anything other than its intended use.
- ⚠ Do not use outdoors.

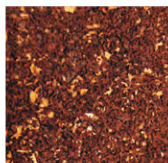


NOTE: This appliance has a polarized plug (one blade is wider than the other). To reduce the risk of electric shock, this plug will fit in polarized outlet only one way. If the plug does not fit fully into the outlet, reverse the plug. If it still does not fit, contact a qualified electrician. Do not modify the plug in any way.

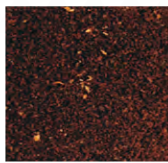
PARTS & FEATURES



COARSE



MEDIUM



FINE



PULSE BUTTON OPERATION
Simple pulse operation for fast and easy grinding that effortlessly pulverizes coffee, herbs, spices, nuts, and many more!

CLEAR LID-ACTIVATED SAFETY SWITCH
Allows you to easily see the consistency of grinds. For safety, the blades do not spin unless the lid is securely placed

2.1 OZ CAPACITY
Removable Stainless Steel Bowl

STAINLESS STEEL BLADES
Grind with precision for coarse to fine grinds

200 WATT POWER
Fast grinding while preserving flavor and aroma

ANTI-SKID FEET
For safety and stability

MULTI-PURPOSE ELECTRIC COFFEE GRINDER

CG620 SERIES



COFFEE BEANS

Freshly grinding your gourmet coffee beans instead of brewing pre-ground coffee enhances their complex flavors and aromas.



PET FOOD

We know that pets are valuable members of the family. Grinding their dry food helps puppies, kitties, and even senior pets chew their food easier.



HERBS & SPICES

Purchasing whole spices/herbs and grinding them yourself ensures that they retain their maximum potency, purity, flavor, and freshness.



XYLITOL CRYSTALS

Make homemade toothpaste with Xylitol, which gets rid of sticky harmful bacteria while repairing enamel, promoting a healthy mouth pH, and growth of tooth-protective bacteria.



USING YOUR MULTI- PURPOSE BLADE GRINDER



BEFORE FIRST USE: Carefully unpack your coffee grinder and remove all packing materials. To remove any dust that may have accumulated during packaging, wipe the grinding bowl and blades with a damp, lint-free cloth or sponge (not included). Use extreme care as the blades are sharp. The transparent cover can be immersed in water for cleaning, but dry it thoroughly.

- 1 Place the unit on a sturdy countertop or surface.
- 2 Assemble the grinding bowl into the motor base, then turn the bowl clockwise until a click sound is heard.
- 3 Fill the grinding bowl with the amount of coffee needed for the number of cups you plan to brew. Do NOT exceed 60 grams.
(approx. 2 oz)
- 4 Place the transparent cover onto the grinder base.
- 5 Plug in the grinder.

- 6 To start grinding, press and hold the “PUSH” button.

WARNING:

- Do not operate for more than 30 seconds at a time.
- Allow the grinder to cool down for 3 minutes between 2 continuous cycles.

- 7 Release the “PUSH” button to stop grinding.
- 8 Check the consistency of your grind through the transparent cover. If you would like to take the cover off to check, please make sure that the blades have completely stopped moving.
- 9 Once the desired consistency has been reached, unplug the power cord from the outlet.
- 10 Remove the transparent cover.
- 11 Disassemble grinding bowl by turning it counter-clockwise.
- 12 Pour contents directly into coffee maker or bowl.



GRINDING TIPS

- ★ If you are grinding coffee beans, know that different grind textures are used for different types of coffee makers. Vary the grinding times to suit your taste and type of beans you grind.
 - COARSE grinds are generally used for percolators, coffee urns, and French presses.
 - MEDIUM grinds are used for drip coffee makers and steam-type espresso machines.
 - FINE grinds are used for espresso machines with an electric pump.
- ★ For the freshest, most flavorful coffee, grind only enough for the pot you are making.
 - Coffee beans can keep up to 2 months in the freezer in an airtight container and can be ground while still frozen.
 - Coffee grounds left in your grinder can become stale and affect the flavor of freshly ground coffee. Be sure to clean the grinding chamber, blades, and cover after each use. (Instructions for deep cleaning are on Page 9)
- ★ This grinder can only grind dry, brittle foods such as coffee beans, soy nuts, dog/cat dry food, cloves, cinnamon, xylitol, flax seeds and various nuts. The grinder will be able to grind MOST beans, spices, herbs, grains, and seeds.
- ★ It will NOT grind anything extremely hard, gummy, or large, so do not attempt to do so, or you may damage the unit. Examples of prohibited items of use are: nutmeg, caraway seeds, and peppers.
- ★ Do NOT grind peanuts or grains such as wheat, rice, barley, or dried corn.
- ★ Do NOT use it to chop ice cubes.
- ★ Attempting to grind any of these foods may damage the unit.
- ★ Tilting the grinder 30° or shaking it slightly will help loosen up the grindable items, and position them to a better grinding area to ensure a more consistent grind.



BLADE GRINDER CARE & MAINTENANCE

CAUTION:

- Always make sure the coffee grinder is unplugged from the electrical outlet before cleaning it.
- To protect against electrical shock, do not immerse cord, plug, or motor base in water or liquid.
- After each use, always make sure the plug is first removed from the wall outlet.

TO CLEAN:

- Hand wash the cover with water and mild detergent. The cover is not dishwasher-safe.
- Rinse thoroughly and dry.
- To clean the grinding bowl and blades, wipe with a damp, lint-free cloth or sponge. Be extremely careful, as the blades are sharp.
- Dry thoroughly.

TO DEEP CLEAN YOUR BLADE GRINDER:

- Add roughly 1/4 cup (about 20 grams) of dry, uncooked rice to the hopper (grinding bowl).
- Run the grinder until the rice becomes a fine powder.
- Dump the rice into the waste bin.
- Unplug the grinder and wipe out the inside with a damp towel. Be extremely careful, as the blades are sharp.
- Dry thoroughly.
- Repeat this process any time your grinder looks like it needs to be cleaned or starts giving off an unusual smell. (This is normal when grinding coffee, as the oils produced will cling to the blades and the inside of the hopper.)



ELECTRICAL REQUIREMENTS

Voltage : 120V Power: 200W Hertz: 60Hz

MULTI-PURPOSE ELECTRIC
BLADE GRINDER

CG620 SERIES





OVENTE WARRANTY

Register your product within 30 days of purchase to activate its one-year limited manufacturer's warranty at
ovente.com/register

NOTE: WARRANTY IS ONLY VALID IF YOU REGISTERED WITHIN 30 DAYS AFTER PURCHASE.

LIMITED ONE (1) YEAR WARRANTY:

Your product has a one (1) year warranty period from the date of purchase from an authorized retailer. In the event that the product is defective, feel free to contact us to arrange for a replacement. This warranty only covers defects in workmanship and materials. The warranty does not include damage due to abuse or misuse, any commercial use, or accidents.

LIMITATIONS

The warranty stated above is the only warranty applicable to this product. Other expressed or implied warranties are hereby disclaimed. No verbal or written information given by the manufacturer, its agents, or employees shall create a guarantee or in any way increase the scope and duration of this warranty. Repair or replacement as provided under this warranty is the exclusive remedy of the consumer. The manufacturer shall not be liable for incidental or consequential damages resulting from the use of this product. Any implied warranty of merchantability or fitness for a particular purpose on this product is limited to the applicable warranty period set forth above except to the extent prohibited by law. Consumer rights may vary from state to state.

Customer Support: ovente.com/support
Visit us at ovente.com

OVENTE®

Defining Housewares