

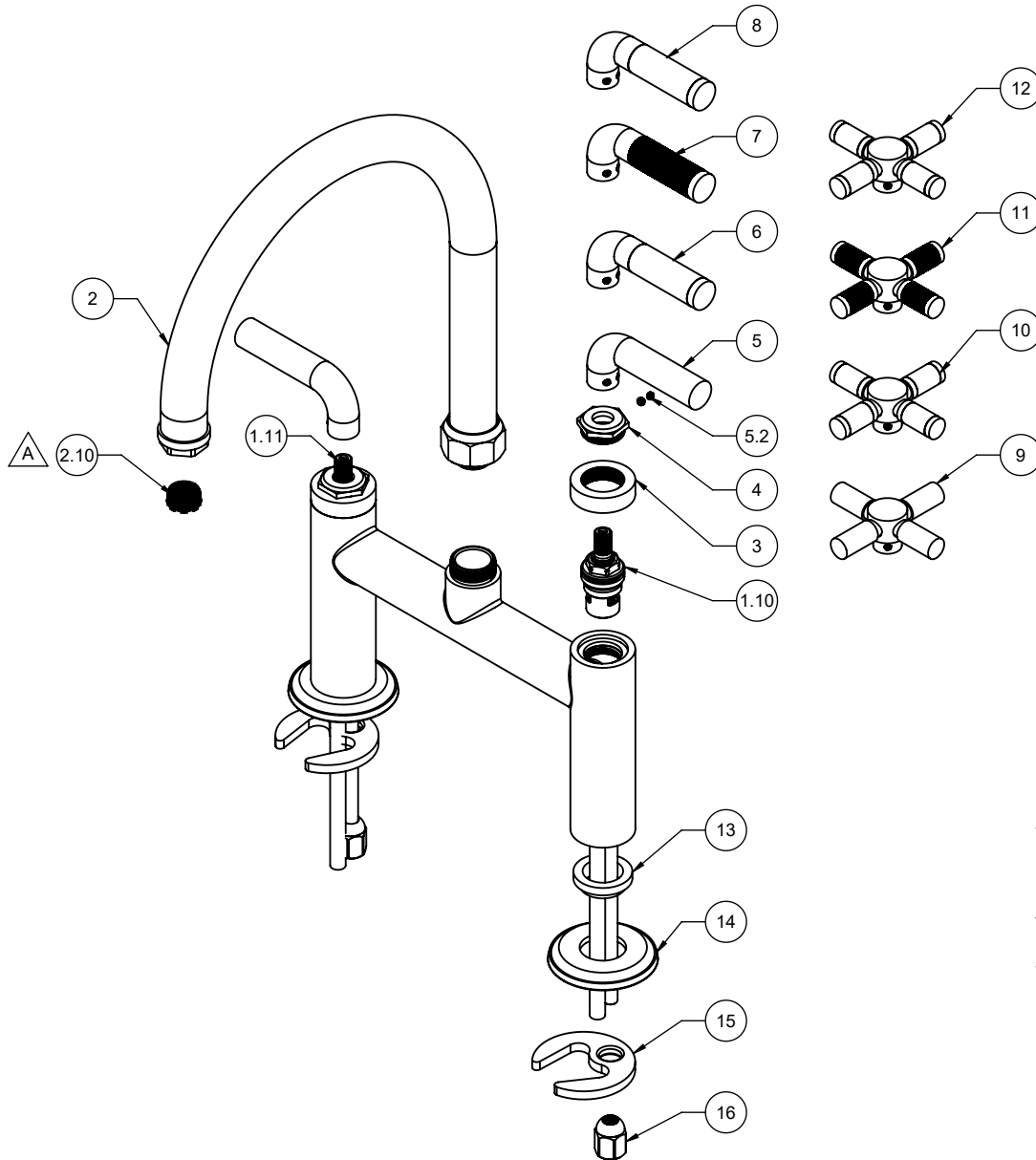
△ REQUIRES ITEM 18

K30-120-SX **K30-120-SL**
K30-120-FX **K30-120-FL**
K30-120-KX **K30-120-KL**
K30-120-TX **K30-120-TL**

To order spare parts add and/or replace as stated below:

SPD- prefix added to part number(s)
-ZZ replaced with finish code (see finish table)
-WW replaced with **-90** (light finish) or **-96** (dark finish)

Ex: **SPD-7-100463-PC** or **SPD-86030-96**



for SL series

for FL series

for KL series

for TL series

for SX series

for FX series

for KX series

for TX series

for ITEM 5.2

for ITEM 2.10

ITEM	PART NO	DESCRIPTION	QTY.
1.10	880431-99	CART 1/2" 16-T W/FRICTION BRG M24X1 MALE THD - LTC "NL"	1
1.11	880430-99	CART 1/2" 16-T W/FRICTION BRG M24X1 MALE THD - RTC "NL"	1
2	7-100440-ZZ	ASM, SPOUT, HEX TIP BRIDGE KIT <i>(incl. 2.10)</i>	1
2.10	880527-81	INSERT, 1.75 GPM, TJ AERATED (PCA CACHE)	1
3	11005-ZZ	SLEEVE, BRIDGE HEX CART	2
4	11008-ZZ	HEX, BRIDGE CART CAP	2
5	7-100146-ZZ	ASM, LEVER, 74 SERIES "BROACHED" <i>(incl. 5.2)</i>	2
5.2	86030-WW	SETSCREW 8-32 X 1/8 SCKT HD CUP PT SS	2
6	7-100277-ZZ	ASM, CARBON FIBER LEVER <i>(incl. 5.2)</i>	1
7	7-100271-ZZ	ASM, KNURLED LEVER <i>(incl. 5.2)</i>	1
8	7-100564-ZZ	ASM, INDUSTRIAL HDL TEAK <i>(incl. 5.2)</i>	1
9	7-100291-ZZ	ASM, INDUSTRIAL X-HDL SMOOTH <i>(incl. 5.2)</i>	1
10	7-100292-ZZ	ASM, INDUSTRIAL X-HDL CARBON FIBER <i>(incl. 5.2)</i>	1
11	7-100293-ZZ	ASM, INDUSTRIAL X-HDL KNURLED <i>(incl. 5.2)</i>	1
12	7-100565-ZZ	ASM, INDUSTRIAL X-HDL TEAK <i>(incl. 5.2)</i>	1
13	11143-98	SLEEVE, BRIDGE CONT LEG	2
14	50760-ZZ	RING, SCALLOPED AIR SWITCH BASE	2
15	880309-98	MOUNTING BRACKET, SINGLE HOLE CRESCENT	2
16	10184-98	NUT, HEX W/ DOME	2
17	882042-99	KEY, ALLEN, 5/64", BLACK	1
18	880079-99	KEY, TJ AERATED CACHE	1