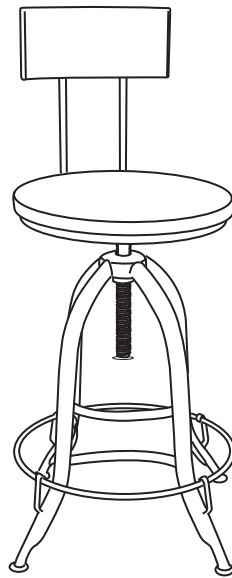
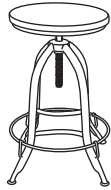
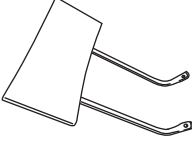

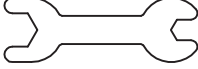
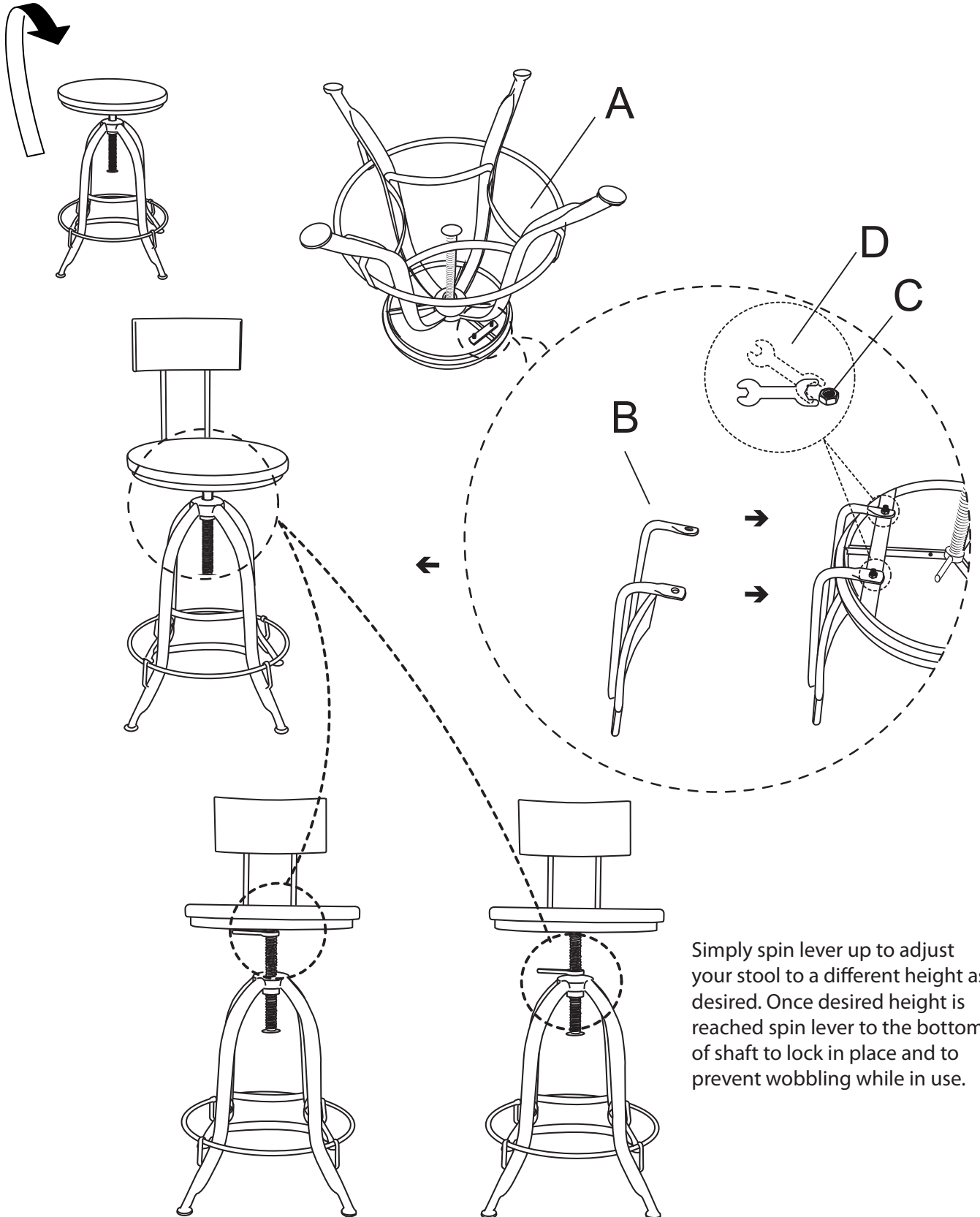


Assembly Instructions



NO.	PART	DESCRIPTION	Q'TY	NO.	PARTS	DESCRIPTION	Q'TY
A		Base	1PC	B		Back Rest	1PC
C		Hexagonal Nut 6MM	2PCS	D		Open-end Wrench	1PC

Assembly Instructions



Simply spin lever up to adjust your stool to a different height as desired. Once desired height is reached spin lever to the bottom of shaft to lock in place and to prevent wobbling while in use.