



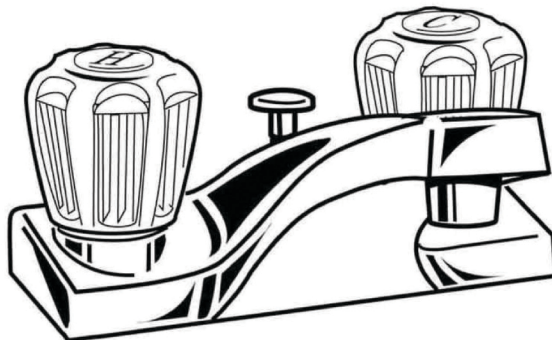
# SINGLE & DOUBLE HANDLE LAVATORY FAUCET INSTALLATION INSTRUCTIONS

## Care Instructions

To clean, wipe gently with a soft, damp cloth, then wipe dry. **plumb tech** faucet finishes are very durable. However, to ensure long lasting luster, harsh abrasives or polishes should be avoided. Your specific model may vary.

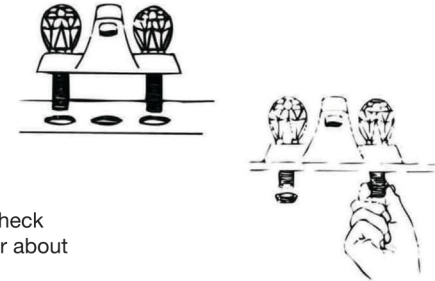
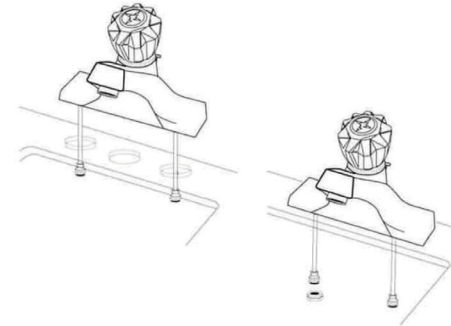


The product illustrated may vary slightly from the actual product.

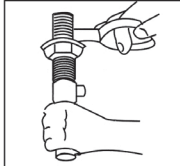
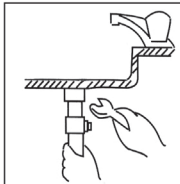
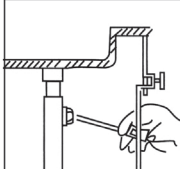
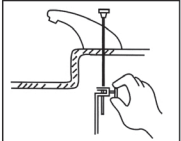


## TO INSTALL SINGLE & DOUBLE HANDLE FAUCETS:

1. Turn off water supply at valves or main.
2. Remove existing faucet and clean mounting area.
3. Position faucet on the sink. From underneath sink, secure faucet with mounting nuts. Hand-tighten nuts, check faucet position, then fully tighten the mounting nuts.
4. On single lever faucets, use a wrench to hold the copper faucet lines in place when tightening supply lines. This will help prevent twisting and kinking or damaging the faucet.
5. Install Pop-Up assembly. (for models where included).
6. Make sure all connections are tight and turn on water supply.
7. Unscrew and remove aerator. Turn water on and check for leaks. Run hot and cold water uninterrupted for about 1 minute to remove any residue from the lines. Replace aerator.



## TO INSTALL POP-UP ASSEMBLY (for models where included):

- A. Thread mounting nut and bottom gasket onto drain body. Wrap top threaded end of the drain body with teflon tape.
 
- B. Insert drain body up through the drain opening and screw seat onto brain body. Hold the drain body with pivot rod opening facing the back of the sink.
 
- C. Place pivot rod in proper opening. Slide pivot nut over rod and thread nut onto drain body. Tighten firmly, but DO NOT OVER-TIGHTEN.
 
- D. With lift rod in position in the faucet, insert lift rod through lift rod strap and secure with set screw.
 
- E. Guide the pivot rod through any hole on the lift rod strap and secure it with the spring clip. Adjust the height of the lift rod by resetting the set screw.
 