

PORTABLE PLUS FOLDING STEAM SAUNA BOX INSTRUCTION



The color is subject to the actual product color received

PRODUCT ACCESSORIES

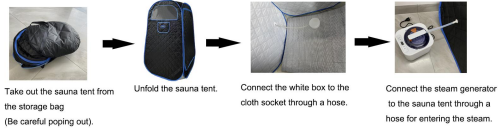


SPECIFICATION

Product Name	PORTABLE FOLDING STEAM SAUNA BOX
Item No.	KLS-606BSP
Using Size	74*74*133cm
Packing Size	70.5x26.5x35cm
Gross Weight	5.5-6KG
Power Consumption	1000W
Power Supply	110V-120V(50-60HZ)
Timer	60 minutes

Specific parameters are based on actual products

INSTRUCTIONS FOR USE



INSTRUCTIONS FOR STORING



THE STEAM GENERATOR INSTRUCTIONS

1. Add the appropriate amount of water and press ON/OFF
2. Press the Timer/Heating button to adjust the time and heat to an appropriate value
3. Time and heat can be adjusted at any time by +/-key
4. The maximum adjustable time is 60 minutes
5. The maximum temperature can be adjusted up to 9 gears
6. After the water boils, it can be adjusted to proper temperature



PRECAUTIONS

Keep out of reach of children, to prevent shock or burns, always keep the steam pot out of reach of children



DANGER



Unplug from outlet when not in use, before putting on or taking off parts, and before cleaning.



DANGER



Do not open the lid while the steamer pot is in operation.



DANGER



Put on the heat retardant glove when loading and unloading the pipe, the connecting parts, opening the outer lid, glass lid.



DANGER



Do not immerse the steamer pot in water.



DANGER



Do not attempt to repair or modify the product by yourself. It may cause shock.



DANGER



Never move the steamer pot while it contains hot liquids. Place the negative ion home therapy box on flat surface.



DANGER



Do not put any animal in the negative ion home therapy box.



DANGER



It is advisable not to use or store the negative ion home therapy box close to a bathroom or a sink.



DANGER



Pour water over LOW line before every using.



DANGER



Allow the steamer to cool before cleaning or touching. After use, make sure to clean the inner pot if adding some herb, essential oil into the steamer pot while using.



DANGER



Do not add alcoholic liquid and/or toxic material into the steamer pot.



DANGER



⚠ DANGER (DO READ CAREFULLY BEFORE USE)

- Put on cloth when using the negative ion home therapy box, lest injury of your skin
 - Do not put your hands and feet close to steam outlet to avoid burned while steamer is running
 - Make sure "ON/OFF" is on OFF after usage. Unplug while not using the steamer.
 - Make sure the water level is below MID before you adding some milk, herb, shaping salt, etc. Avoid in water overload. It will cause the machine
- ATTENTION**
1. If you feel too hot in the sauna tent, please set the "ON/OFF" to "OFF" or pull the zipper down to sauna tent for a while.
 2. Do not use for any other purpose.
 3. If it is not working properly, please stop using immediately. Return the appliance to a service center for examination and repair.
 4. If adding some additives into the steamer pot, the ratio for additives and water should not more than below mentioned to avoid the additive immerse and cause damage to the machine or effect the using life of the machine.

PRECAUTIONS

Those who have the following conditions, please do not use

- ★ Get a bad cold, have taken hypnotic or medicine comprising somnolent.
- ★ Have weak heart, or suffer from heart disease and other blood vessel disease.

CLEANING AND MAINTENANCE

1. STEAM TENT

- ★ Please wipe away the water in the tent after use
- ★ Open the steam tent by pulling down the zipper, make sure the steam tendry. After that, you can store the tent.
- ★ You can clean the sauna tent with wet cloth.

2. STEAM GENERATOR

- ★ Allow the steam generator to be cool before cleaning the inner generator.
- ★ Make sure to clean the inner generator every usage in order to keep the appliance in good condition.
- ★ Do not immerse the steam generator in water to reduce the risk of electric shock.
- ★ Do not immerse the steam generator in water to reduce the risk of electric shock.
- ★ Please wipe the steam generator with wet cloth in order to keep it clean.