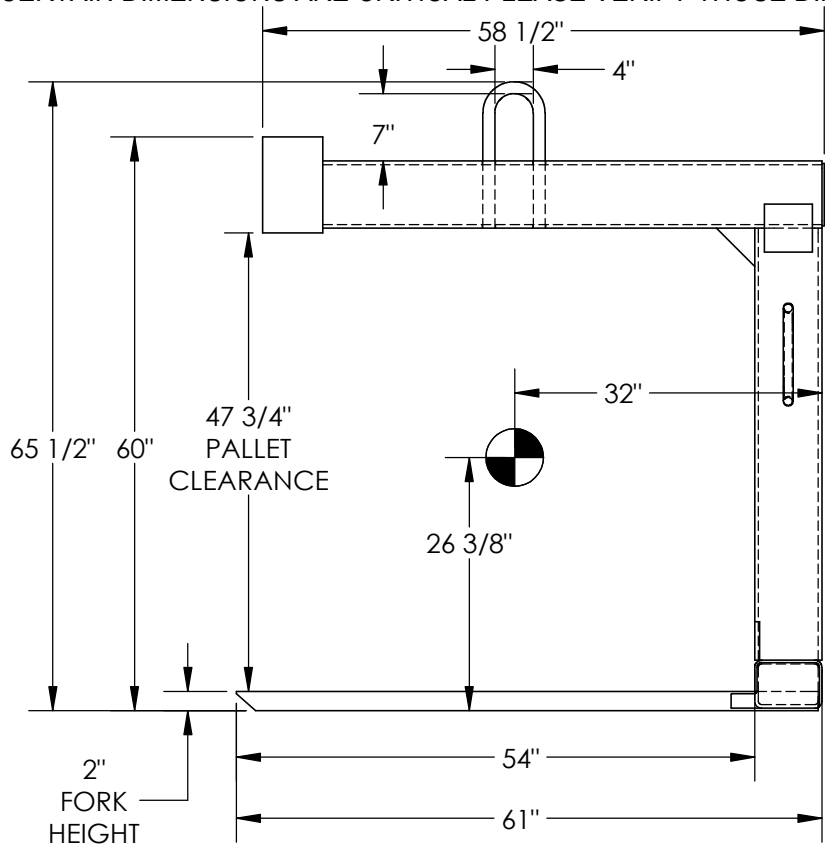
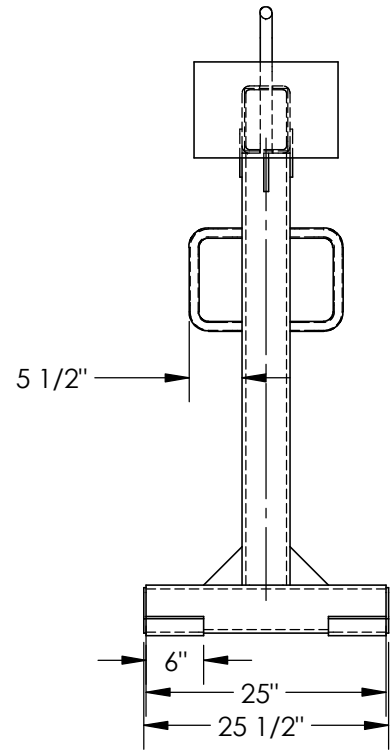


APPROX WEIGHT: 959.17 lbs.  
DOES NOT INCLUDE WEIGHT OF POWER OR PACKAGING!!!

PALLET LIFTERS - HDP-6-54

\*\*\* ANY ADDITIONS, DELETIONS, OR OMISSIONS MUST BE CORRECTED ON THIS DRAWING AS THIS DRAWING WILL BE CONSIDERED ALL INCLUSIVE \*\*\*  
ALL GRAPHICS PROVIDED ARE FOR REFERENCE ONLY. IF CERTAIN DIMENSIONS ARE CRITICAL PLEASE VERIFY THOSE DIMENSIONS WITH YOUR SALESPERSON



DIMENSION TOLERANCE ± 1/4"

FOR INTERNAL USE ONLY PROJECT SIGN OFF	
SALES	
ENG.	
FAB.	
POWER	

STANDARD FEATURES

- MODEL NUMBER IS: HDP-6-54
- CAPACITY: 6000 LBS
- OVERALL LENGTH IS: 61"
- OVERALL WIDTH IS: 25 1/2"
- OVERALL HEIGHT IS: 65 1/2"
- 2 x 6 x 54" LG FORKS
- 4" x 7" INSIDE BAIL SIZE
- 25" OVERALL FORK WIDTH
- ALL STEEL CONSTRUCTION
- PAINTED VESTIL BLUE
- VERTICAL CENTER OF GRAVITY  
26 3/8" FROM BOTTOM
- HORIZONTAL CENTER OF GRAVITY  
32" FROM THE BACK

SPECIAL FEATURES

NONE

APPROVAL	I, THE UNDERSIGNED, AGREE THAT THE PRODUCT AS REPRESENTED SATISFIES DESIGN AND DIMENSION REQUIREMENTS. I ALSO ACKNOWLEDGE MY DUTY TO CONFIRM PRODUCT AND INSTALLATION COMPLIANCE WITH ALL APPLICABLE FEDERAL, STATE AND LOCAL REGULATIONS AND STANDARDS.	
	<b>ANY MODIFIED UNITS ARE NON-RETURNABLE</b>	
	[ ] As drawn [ ] As marked	
	Signed: _____ Date: _____	
	Printed Name: _____	
LEAD TIME WILL START UPON RECEIPT OF SIGNED APPROVAL DRAWING		

FOR INTERNAL USE ONLY PROJECT SIGN OFF	
SALES	
ENG.	
FAB.	
POWER	

DISTRIBUTOR'S NAME:		P.O.#
VESTIL MANUFACTURING		X
DRAWN BY: NF		W.O.#
DATE: 09/15/2005		X
REFERENCE: X	SCALE: 1:20	SALES: X
QUOTED LEAD TIME: X	QUOTE # X	FILE NAME:
		15-007-048