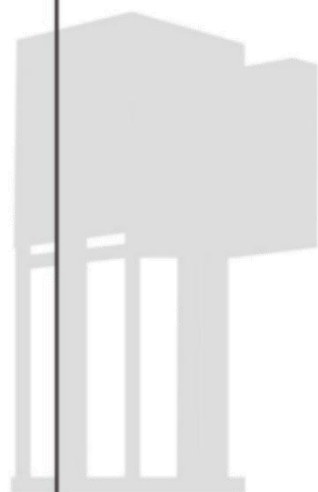




OPERATIONS MANUAL



Instruction



### **Where to Place Your Outdoor Wall Lights**

If you have one light next to your entryway or garage door, then it should be 1/3 of the height of the door. If you will be placing one light on each side of the door, then the lights should be 1/4 of the height of the door. To do this, measure from the floor to the top of your door, then divide by 4 for two lights or 3 for one light. For example, if your door is 80" tall, divide by 4, and buy two lights that are each 20" tall. The lights should also be placed 66" from the floor or ground to properly illuminate the lock and handle. Lights should also be placed 6" from the edge of the door. If you choose to have only one light, make sure it is placed on the side of the door closest to the door handle.

### **What should I do if the glass lampshade I received is cracked or broken?**

We understand that receiving a damaged product can be disappointing. If you find that your glass lampshade is cracked, broken, or otherwise not in perfect condition, please contact us immediately. Our customer service team is dedicated to providing you with the best possible solution and ensuring your satisfaction.



**installation steps:**

- Step 1: unscrew screw E from the lamp body and remove the hanging plate B;
  - Step 2: Install the hanging plate B lock on the junction box A with screw C;
  - Step 3: use terminal B The ground line and the input line are connected respectively
  - Step 4: Use screw E to lock the F lamp body onto the hanging plate B;
- Installation completed

