

DESIGNER COLLECTION

PICASSO

7240

SIZE
72" L x 40"W x 27"D

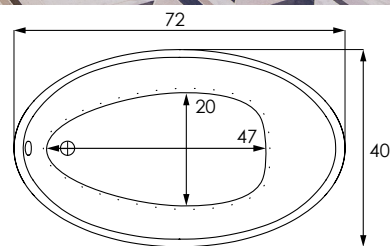
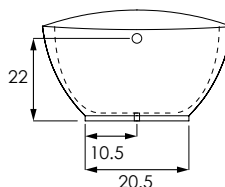
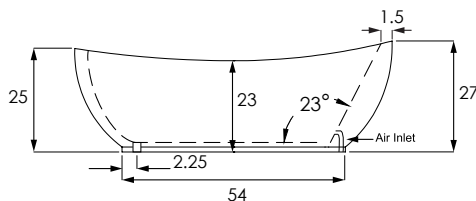
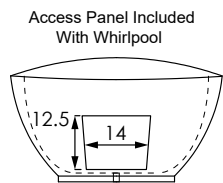
WATER CAPACITY
125 Gallons

WEIGHT
210 Pounds

INSTALLATION
Drop-in

BACK SLOPE
23°

MATERIAL
Acrylic



MODEL

MPI7240ATO	Tub Only
MPI7240AWP	Whirlpool (6)
MPI7240ATA	Thermal Air
MPI7240ACO	Combo System

COLORS

Standard Acrylic	White Biscuit Bone
Premium Acrylic	Black Sterling Silver Carmine Red Concrete Grey Distant Blue Grey Beige Moss Green Orange
Premium Hydroluxe Colors	Brown Pastel Violet Purple Violet Red Orange Sapphire Blue Signal Orange Stone Grey Tarpaulin Grey Terra Brown

FINISH

Matte Finish	MAT (must specify if desired)
Polished Finish	STANDARD

DUAL COLOR OPTION

MODEL/COLOR1 INT/COLOR2 EXT	(XXX.XXX.XXX)
-----------------------------	---------------

SURFACES (outside only)

Metallic: Polished Nickel [PN]	
MODEL/METAL/COLOR	(XXX.XXX.XXX)

COLD PLUNGE | [order form](#)

CLD.PL

EXPORT CRATE

FRT.EXPCRT



Headquarters
29132 Avenue Paine
Valencia, CA 91355

Technical Support
support@hydrosystem.com

Orders Department
orders@hydrosystem.com

General Information
info@hydrosystem.com

Phone: 661-775-0686

Website: hydrosystem.com

CODES AND COMPLIANCES

Massachusetts code File no: P1-0614-491



All specifications and options subject to change without notice please contact a hydro systems representative for more information.

MODEL

EXTRA HIGH DENSITY	HI.DEN
---------------------------	--------

GRAB BARS (Pair) Refer to price book for all available finishes

Standard Grab Bars	GRA.BAR-XXX
Universal Grab Bars	UGB.BAR-XXX

HEATED BACKREST	INCLUDED ON THERMAL AIR
------------------------	-------------------------

HYDRO BLANKET 2 Zones 3 Zones 4 Zones 5 Zones (W/ 2 Controls)	BLA.HEA-X
---	-----------

HYDRO COAT	HYC.COA
-------------------	---------

HYDRO EXPRESS	69.104-HYD.EXP-FRE
----------------------	--------------------

HYDRO FUSION order form	
Hydro Fusion (Tub Only)	29.102
Hydro Fusion w/ Ozone (Tub Only)	29.103
Hydro Fusion (TA, Whirlpool, Combo)	29.107

HYDRO INDULGE order form	HYD.IND
---	---------

HYDRO OZONE	INCLUDED ON THERMAL AIR
--------------------	-------------------------

ISLAND TUB DRAIN	ITD.XXX
ABS, PVC	ITD.ABS ITD.PVC
Cast Iron	ITD.CST

HYDRO SYSTEMS

Manufacturing Facility
385 Highway 155 South
McDonough, GA 30253



PICASSO

7240

DESCRIPTION

JETS

Installed per jet price for extra jets added to standard system price. All metallic finishes come with colored eyeball.

JET PLATING

Clear / Brass / Chrome. Trim kit covers jet escutcheons, suction, and electronic softtouch pad. Per jet substitution price added to standard system price. All metallic finishes come with colored eyeball.

Group 1 (PC or PB)

6 Jets PLA.06-XX

Group 2 (AB, BB,SB, BC,SC,PN,SN,BN)

6 Jets PLA.06-XX

Group 2 (PG, BG)

6 Jets PLA.06-XX

LED TEMP. READOUT KEYPAD

Upgrade only, must have a keypad controlled system to purchase. LED.UPG

LIGHTING

LED Bath Light Chromotherapy System LIG.LED

DESCRIPTION

REMOTE CONTROL

Must have system to purchase REM.CON

TOWER

Must specify size & location on tub. Can hide plumbing, fusion, or indulge.

18" or 24" 25" - 30"

31" - 36" 37" - 42"

43" - 48" 49" - 54"

55" - 60" Access Panel

INTEGRAL W/O (Std. round)

IWO.XX (INCLUDED)

Waste and overflow manufactured as part of the bath. Comes standard as a round overflow cover. Drain will be a tip-toe style and drain outlet will be a direct drain.

(WHI, BIS, PC, PB, PN, BC, BB, BN, SC, SB, SN, ORB, PE, MB)

W/O - Gold Finish Upgrade (PG, BG)

LINEAR INTEGRAL W/O

LWO-XXX (NO CHARGE UPGRADE)

Waste and overflow manufactured as part of the bath. Drain will be a tip-toe style and drain outlet will be a direct drain.



HYDRO SYSTEMS



Headquarters
29132 Avenue Paine
Valencia, CA 91355

Manufacturing Facility
385 Highway 155 South
McDonough, GA 30253

Technical Support
support@hydrosystem.com

Orders Department
orders@hydrosystem.com

General Information
info@hydrosystem.com

Phone: 661-775-0686

Website: hydrosystem.com

CODES AND COMPLIANCES

Massachusetts code File no: P1-0614-491



All specifications and options subject to change without notice please contact a hydro systems representative for more information.

PICASSO

7240



STANDARD ACRYLIC COLORS **PREMIUM ACRYLIC COLORS**



PREMIUM HYDROLUXE COLORS



WELLNESS OPTIONS



Cold Plunge
Revitalizing cold hydrotherapy into a traditional tub



Thermal Air
Tiny bubbles into the bathwater and offers untold relaxing benefits, similar to Swedish massage



Hydro Indulge
A concentrated dose of oxygen-rich molecules cleanse and restore skin



Whirlpool Massaging Jets
Flexibility to customize jet location, quantity of jets and type of jet therapy



Advanced UV system
Ozone and UV light helps to disinfect the water and keep it clean



Chromotherapy
Digitally controlled, multicolored lighting feature LED lighting system



Hydro Fusion
Totally silent operation maintains ideal temperature without adding hot water constantly



Hydro Blanket
Radiant heat emanates through the acrylic tub surface. Chose up to 2-5 panels..

OTHER OPTIONS

Additional options can be found on our website



Integral Waste and Overflow
Seamless built-in protection for bathtub (included)



Grab Bars
Adds functionality and enhanced styling. Affords a mounting solution in virtually any position on any tub.



Tower
Ideal solution adding systems or roman tub faucet to a freestanding bathtub.



Island Tub Drain
Asymmetrical 18 Gauge Epoxy coated Metal Deck Flange makes installation in tight spaces easier.



HYDRO SYSTEMS



Headquarters
29132 Avenue Paine
Valencia, CA 91355

Manufacturing Facility
385 Highway 155 South
McDonough, GA 30253

Technical Support
support@hydrosystem.com

Orders Department
orders@hydrosystem.com

General Information
info@hydrosystem.com

Phone: 661-775-0686
Website: hydrosystem.com

CODES AND COMPLIANCES

Massachusetts code File no: P1-0614-491



All specifications and options subject to change without notice please contact a hydro systems representative for more information.