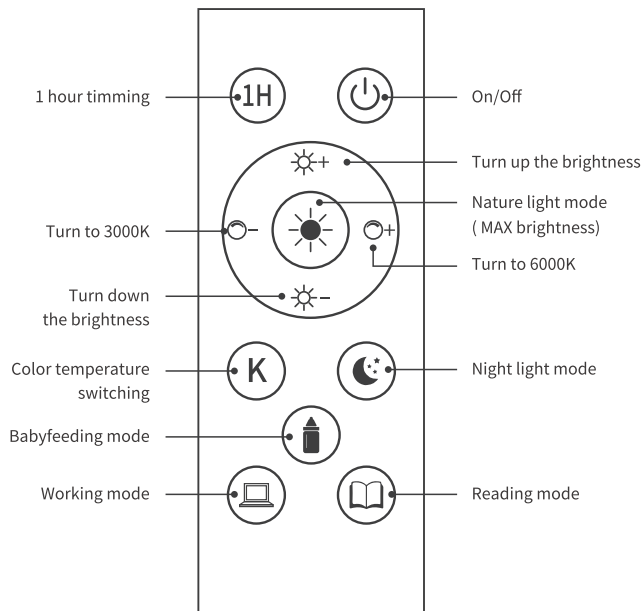


1. Function of the button

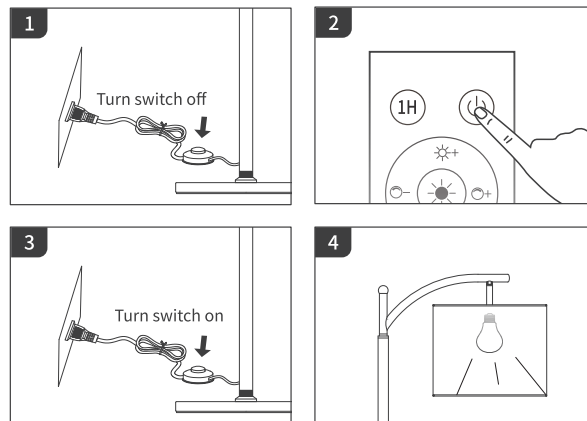


2. Matching and Decoding

Make sure the remote control matches well with the lamp :
Plug the adapter to the power supply and use the remote to control the lamp. Usually the remote controls the lamp perfectly.
If the remote control doesn't work for the lamp, please re-match them.

Matching process :

1. Disconnect the power supply for more than 10 seconds.
2. Press the power button on the remote and hold on.
3. Connect the power supply.
4. When the light flashes, it matches successfully.



Decoding process :

Connect and disconnect the power supply 5 times. When the main light flashes, it means decode successfully.

