



Your Source for Home Comfort

**TABLETOP
COOL MIST
HUMIDIFIER
USER MANUAL**

FOR MODEL:

PAU13

Before using your ultrasonic humidifier, please read this manual carefully and keep it for future reference, along with your receipt.



CONTENTS

Safety Guidelines	2-3
Technical Data	3
Features	3
Structure Diagram	4
Operating Instructions	
• Setting up your humidifier	5
• How to use your humidifier	6
Weekly Maintenance Cleaning & Care	6-7
Storage Instructions	7
Warranty	7
Troubleshooting	8

SAFETY GUIDELINES

When using electrical appliances, basic safety precautions should always be followed. Failure to follow these safety precautions may result in personal injury, property damage, fire or shock.

1. Always have water in water tank when operating unit.
2. Use only clean, distilled or FILTERED tap water. Using tap water with a high mineral content (hard water) will result in a white dust and the need for more frequent cleanings. Hard water can be harmful to unit and may eventually cease its operation.
3. Be sure the cap of the tank is firmly tightened.
4. Position the unit within the room so the air output from the mist control output nozzle is aimed away from children, walls and furniture.
5. When removing the tank, use one hand on the tank handle and the other on the bottom of the tank.
6. DO NOT use if tank is cracked.
7. DO NOT place the appliance near heating devices such as a stove. Keep it out of direct sunlight. Keep the cord away from heated surfaces and areas where it can be stepped on or tripped over.
8. Use only 110-120V AC outlet. Be sure unit is plugged in firmly and completely. As with any electrical device, plug and unplug unit with dry hands only.
9. Turn the humidifier off and unplug the unit when not in use, when moving or when cleaning.
10. To avoid the risk of fire, shock or personal injury, do not use an extension cord.
Warning: Never operate unit with a damaged cord or plug.
11. Never set on floor. Always place unit on a flat, level, waterproof surface at least 24 inches off floor AWAY from direct sunlight, computers or other sensitive electronic equipment. DO NOT place the humidifier on wood furniture or other surfaces that can be damaged by water. DO NOT place on floor or carpet.
12. DO NOT add medication or cleaning products of any type into the mist control nozzle, base or water tank. (See "Weekly Maintenance Cleaning & Care" section of this manual for proper instructions on cleaning the unit.) DO NOT cover, block or place anything over any opening. NEVER drop or insert any object into any openings.
13. The unit should not be left unattended in closed rooms as air could become saturated and leave condensation on walls or furniture. Always leave room door partially open.
14. DANGER: NEVER immerse the humidifier motor unit (base) in water or other liquids as electrical shock may occur.
15. DO NOT use outdoors.
16. Turn humidifier OFF if the relative humidity exceeds 60% or if you notice condensation on inside of windows. For proper humidity reading, use a hydrometer which is available in many retail stores.
17. The nebulizer (ultrasonic transducer) is highly sensitive. Keep this important part clean and treat it gently. Only clean per instructions.
WARNING:
 - Do not touch the nebulizer while the unit is operating, as possible burns could result.
 - Do not touch the nebulizer with fingers. Any residue on the metal will reduce mist output.
18. The unit contains no consumer serviceable parts. To reduce the risk of electrical shock, do not attempt to open the base of the humidifier.

SAFETY GUIDELINES (continued)

DANGER!

To reduce the risk of electrical shock, this product has a polarized plug (one blade is wider than the other). As a safety feature this plug will fit into the outlet only one way. If the plug does not fit fully into the outlet, reverse the plug. If it still does not fit, contact a qualified electrician. DO NOT attempt to bypass this safety feature. Improper use of electric cords and plugs can cause a fire or electric shock hazard. NEVER pull on the cord to remove the plug from the outlet. Grip plug and pull from outlet. Check the power cord and plug for damage. A damaged cord or plug must be repaired before using the humidifier.

TECHNICAL DATA

Model	PAU13
Voltage	110-120V~/60Hz
Watts	35W
Output per Hour	3.5–10.8 oz/hr
Water Tank Capacity	1.3 gallons
Net Weight	4.46 lbs

FOR HOUSEHOLD USE ONLY

All data was tested by the factory and is for reference only.

This product is designed for home use only.

FEATURES



Micro Mist



Whisper Quiet Operation



Adjustable Output Levels



Auto Shut-Off



360° Adjustable Output Direction



Waterless Indicator



Active Built-in Carbon Filter



Easy Fill Design

Ultrasonic Technology

Ultrasonic technology is widely used in various domains. Water is atomized by ultrasonic sound waves and propelled through the air by a small fan. These ultrasonic pulses are silent and produce visible mist that quickly disperses to increase the level of humidity in the immediate area. The unit features an easy to clean ultrasonic transducer (nebulizer) for increased longevity.

Auto Shut Off Protection / Waterless Indicator

When the water tank is empty, the motor will shut off automatically and Power Indicator Light will turn red.

Micro Mist

Micro mist water particles are smaller than water particles produced by regular ultrasonic humidifiers. Benefits of micro mist technology include up to 40% greater output, water vapor particles 70-80% smaller for quicker air dispersion, 25% greater room coverage, and less condensation on and around unit.

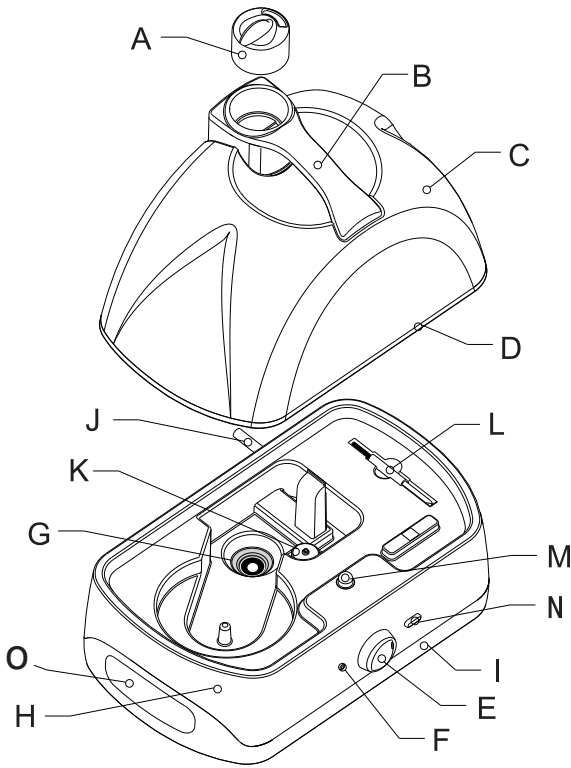
Overload Protection

The unit will automatically shut off if a circuit is overloaded.

Night Light

Creates a soft illumination. To turn on night light, push night light button. Repeat process to turn off.

STRUCTURE DIAGRAM



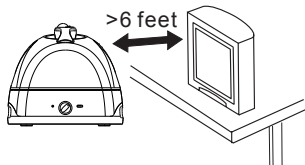
- | | |
|---|---------------------------------|
| A. Mist Output Control Nozzle | H. Base Body |
| B. Water Tank Handle | I. Base Board |
| C. Water Tank | J. Power Cord |
| D. Tank Filling Cap (on bottom) | K. Water Sensor |
| E. Power/Output Adjustment Knob | L. Cleaning Brush for Nebulizer |
| F. Power Indicator Light / Water Refill Light | M. Night Light |
| G. Ultrasonic Transducer
(Nebulizer - white circle inside black
circle at bottom of base) | N. Night Light On/Off Switch |
| | O. Base Handle |

OPERATING INSTRUCTIONS

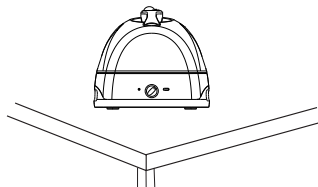
SETTING UP YOUR HUMIDIFIER

Placement of unit

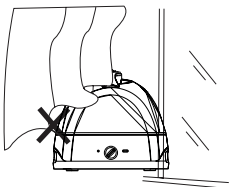
1. Place the unit at least 6 feet away from wood furniture, TVs, stereos and other electronic appliances.



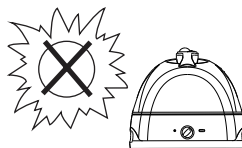
2. Always place humidifier on a firm, flat, level, waterproof surface, at least 24 inches off the floor.



3. Do not place unit near curtains, paintings/portraits, bedding or wood furniture.

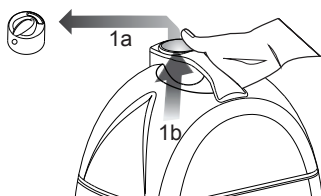


4. Do not place unit near the stove or other heat sources. Do not place the unit in direct sunlight.

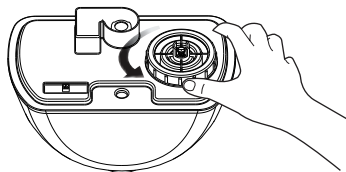


Water Refill

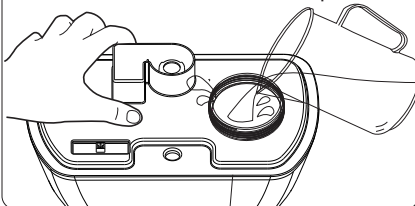
- 1a. Remove mist output nozzle from tank.
- 1b. Hold the tank handle and lift the water tank from the base.



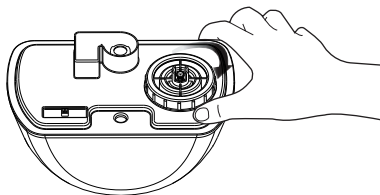
2. Carefully turn the water tank upside down; unscrew the tank cap by turning it counter-clockwise and set aside.



3. Steady the base of tank on surface with left hand. Fill the tank with clean, cool distilled or FILTERED tap water.



4. Replace the tank cap by firmly turning clockwise.



5. Set base in appropriate location and replace tank carefully onto base. Base will partially fill with water.
6. Replace mist output control nozzle (which was removed in step 1a) before starting humidifier.

OPERATING INSTRUCTIONS

HOW TO USE YOUR HUMIDIFIER

IMPORTANT NOTES REGARDING HUMIDIFIER USAGE

1. It is recommended that the humidifier base be cleaned before first use. See cleaning instructions on next page.
2. Be sure unit is at least 24 inches off of the floor. Place unit on a firm, level surface. Do not place unit on overly soft, unstable surface, towel or wood. The humidifier should be placed at least four (4) inches away from all walls and away from heat sources.
3. When filling the tank, note:
 - a. Always unplug unit before filling and replacing tank.
 - b. Distilled or softened water is highly advised. Minerals in (hard) tap water may cause a "white dust" to appear on furniture and also can eventually cause unit failure.
 - c. Extreme temperatures can damage unit. Water temperatures should NEVER be too hot or too cold. Water temperature should fall between 40°F and 90°F.
 - d. Return tank securely to base before turning on humidifier.
4. To Turn Unit On
 - a. Plug power cord into a 110-120V AC wall outlet only.
 - b. Turn the On/Off Adjustment Knob in a clockwise direction to begin operation of unit.
 - c. Press night light button to illuminate water tank for night time operation.
 - d. Turn mist output control nozzle to manually adjust mist direction.
5. To Turn Unit Off
 - a. Turn unit off when desired room humidity is achieved by turning the On/Off Adjustment Knob counter-clockwise.
 - b. Always turn unit off when water tank is empty.
 - c. Unit will automatically stop creating mist when water level in base is very low.
 - d. Do not let water sit in water bottle tank or base for more than 24 hours.
 - e. Unplug when not in use.

DANGER!

Improper use of electric cords and plugs can cause a fire or electric shock hazard. NEVER pull on the cord to remove the plug from the outlet. Grip plug and pull from outlet. Check the power cord and plug for damage. A damaged cord or plug must be repaired before using the humidifier.

WEEKLY MAINTENANCE CLEANING & CARE

For optimum performance, clean your humidifier weekly according to the following instructions.

IMPORTANT:

- Unplug the power cord before cleaning.
- NEVER use any cleaning products/solutions which are abrasive, corrosive or flammable, as these can be harmful to the unit and void warranty if used.

STEP ONE: Scale Removal

1. Fill the base with one 8-oz cup of undiluted white vinegar.
2. Let solution stand for 20 minutes.
3. With the vinegar in the base, clean all interior surfaces with a soft cloth or brush to help remove scales. Do not touch the nebulizer with fingers. Any residue on the nebulizer will reduce mist output.
4. Carefully rinse with clean, warm water and gently wipe clean.

Continued on Next Page >

WEEKLY MAINTENANCE CLEANING & CARE *(continued)*

STEP TWO: Disinfecting

1. Fill the tank with a solution of bleach and water. (Use 1 teaspoon of household bleach in one gallon of water.)
2. Let solution stand for 20 minutes, shaking vigorously every few minutes.
3. Rinse with warm water until the bleach smell is gone.

STORAGE INSTRUCTIONS

1. Clean unit thoroughly according to instructions and allow to dry completely before storing.
2. Store unit in an upright position away from sunlight. Do not store in temperatures below 41°F.

ONE YEAR LIMITED WARRANTY

PERFECT AIRE® warrants that during the first year from the original date of purchase, this product will be free from defects in material and workmanship. Perfect Aire, at its discretion, will repair or replace this product or any component of this product found to be defective during the warranty period. This is a one-time replacement warranty. If the product is no longer available, Perfect Aire will replace the unit with a similar model of equal or greater value.

This warranty is not transferable. Proof of purchase is **REQUIRED** in order to obtain warranty assistance.

This warranty does NOT cover:

- Damages caused by improper installation or improper cleaning.
- Negligent use or misuse of the product.
- Damages as the result of not using product in accordance with provided instructions.
- Damage to product, walls paintings/portraits, furniture, floor, etc. as the result of high mineral content in water.
- Damage to product, walls, paintings/portraits, any furniture (wood), floors, etc. as a result of improper installation and/or cleaning.
- Use of improper voltage or current.
- Additional or extended warranties offered by retailers.
- Disassembly or repair by anyone other than an authorized Perfect Aire service center provider.
- Products used in a commercial setting.
- Floor display 'as-is' models.
- Damage caused by acts of nature such as hurricane, tornado, fire, etc.
- Incidental or consequential damages caused by breach of any expressed, implied or statutory warranty or condition with exception to the extent prohibited by law.
- Any performance issues that fall outside of the 1 year warranty.

Note: Some states do not allow the exclusion or limitation of incidental or consequential damages. This limitation or exclusion may not apply to you.

DO NOT RETURN THIS PRODUCT TO THE STORE.

If you have any questions about this product or its warranty, please call consumer services at toll-free 877-365-6274.

TROUBLESHOOTING

Please check the following troubleshooting tips before calling for assistance.

Problem	Reason	Solution
Power light is off	Unit not plugged in	Plug in unit and turn on the power / output adjustment knob.
	Wall outlet has no power	Check the circuit and fuse; try another socket.
Unit / Mist has peculiar smell	New unit	Air unit out in cool place for 12 hours without the tank on the unit.
	The water is dirty or stale	Thoroughly clean unit and place fresh water in tank.
Excessive noise	Vibration between the humidifier and surface	Place the unit on a stable, waterproof surface.
	Low water level in water tank	Fill the water tank.
White dust	Water contains high mineral content	Switch to distilled or filtered water; clean nebulizer according to instructions.
Damp table or floor	Unit too far from end of table or too close to floor	Move unit closer to edge of table so mist has more time to disperse. Do not place unit on floor.
	Base overflowed	Tank cap not securely attached or needs replacement.
No mist / Little mist / Mist stuck	Base overfilled	Empty base and restart.
	No water in the water tank	Add water to the water tank.
	The power / output adj. knob is not turned on	Rotate the power / output adjustment knob clockwise to power the unit on.
	The humidifier is not on a flat surface	Put the humidifier on a flat surface.
	There is scaling on the nebulizer / transducer	Clean the nebulizer / transducer according to instructions.
	Tank was cleaned with wrong type of cleaner	Use fresh water to clean the water tank completely and then let tank dry completely.
	The water level is too low	Add water to the water tank.
	The water is dirty or stale	Thoroughly clean unit and place fresh water in tank.
	The nebulizer / transducer or fan does not work	Call Perfect Aire Consumer Services: 877-365-6274
Condensation on windows or machine	The room is too small or too humid	Turn down the mist volume or turn the unit off completely.
Scaling on nebulizer / transducer	Water is too hard	Use distilled or filtered water.



Your Source for Home Comfort

Distributed by:

Perfect Aire, LLC
5151 Belt Line Rd.
Suite 878
Dallas, TX 75254

877-365-6274
www.perfectaire.us

Specification and performance data is subject to change without notice.

Printed in China