



Serpentine Bronze™ Conical Bell®

Above-counter/Wall-mount Bathroom Sink
K-14223-SP

Features

- Vitreous china.
- Above-counter/wall-mount.
- Round bowl basin.
- Without overflow.
- No faucet holes; requires wall- or counter-mount faucet.
- KOHLER Artist Editions designs.
- Serpentine Bronze™ design.
- 16-1/4" (413 mm) diameter

Recommended Accessories

K-7114 Pop-Up Drain
K-7129 Drain
K-9018 P-Trap
K-9655

Components

Additional included component/s: Adjustable linkage.



ADA	CSA B651	OBC
-----	----------	-----

Codes/Standards

ASME A112.19.2/CSA B45.1
ADA
ICC/ANSI A117.1
CSA B651
OBC


KOHLER® One-Year Limited Warranty

See website for detailed warranty information.

Available Color/Finishes

Color tiles intended for reference only.

Color	Code	Description
-------	------	-------------

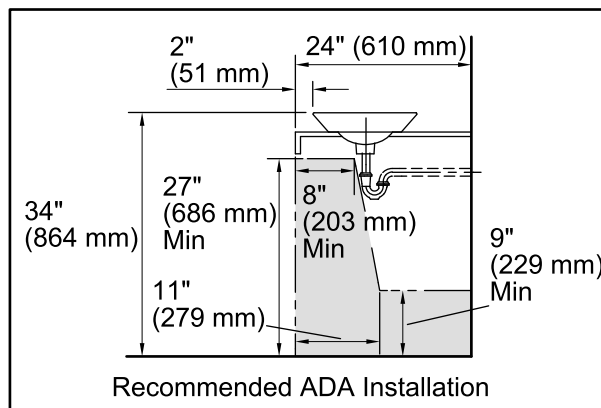
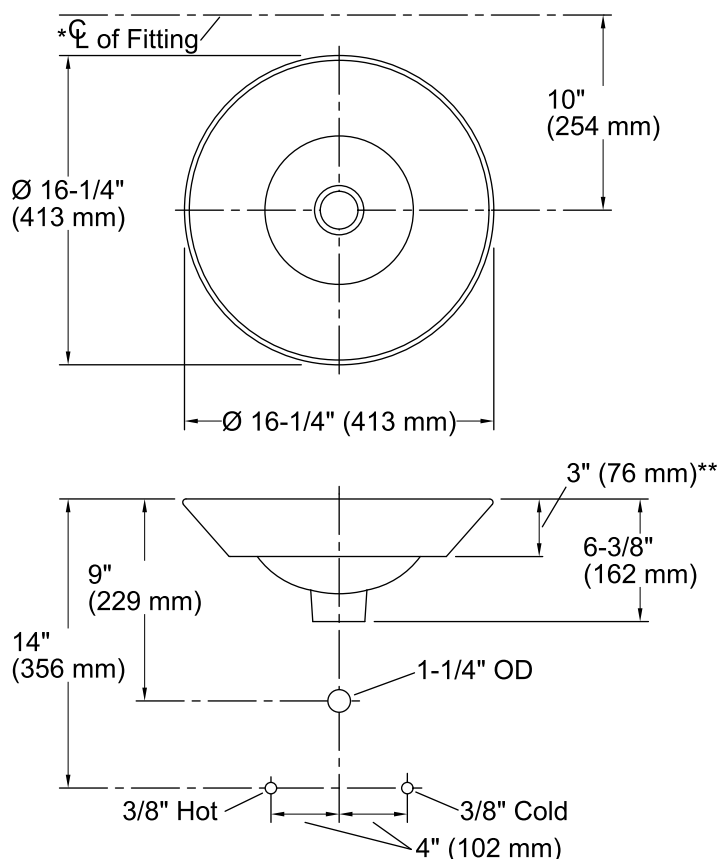
	G9	Sandbar
--	----	---------

KOHLER®

Serpentine Bronze™ Conical Bell®

Above-counter/Wall-mount Bathroom Sink

K-14223-SP



Technical Information

All product dimensions are nominal.

Bowl configuration: Single

Installation: Above-counter, Wall-mount

Bowl area (Only) Diameter: 15-7/8" (403 mm)
Water depth: 4-1/4" (108 mm)

Drain hole: 1-3/4" (44 mm)

Template: Above-counter, 1002980-7, required, included

Notes

Install this product according to the installation guide.

*Spout must be 5" (127 mm) long (min) for adequate clearance into the bathroom sink when installed with centerline as shown.

NOTICE: Countertop manufacturer or cutter must use the cut-out template provided with the product, or a current one provided by Kohler Co. (call 1-800-4-KOHLER). Kohler Co. is not responsible for cut-out errors when the incorrect cut-out template is used.

ADA, OBC, CSA B651 compliant when installed to the specific requirements of these regulations.