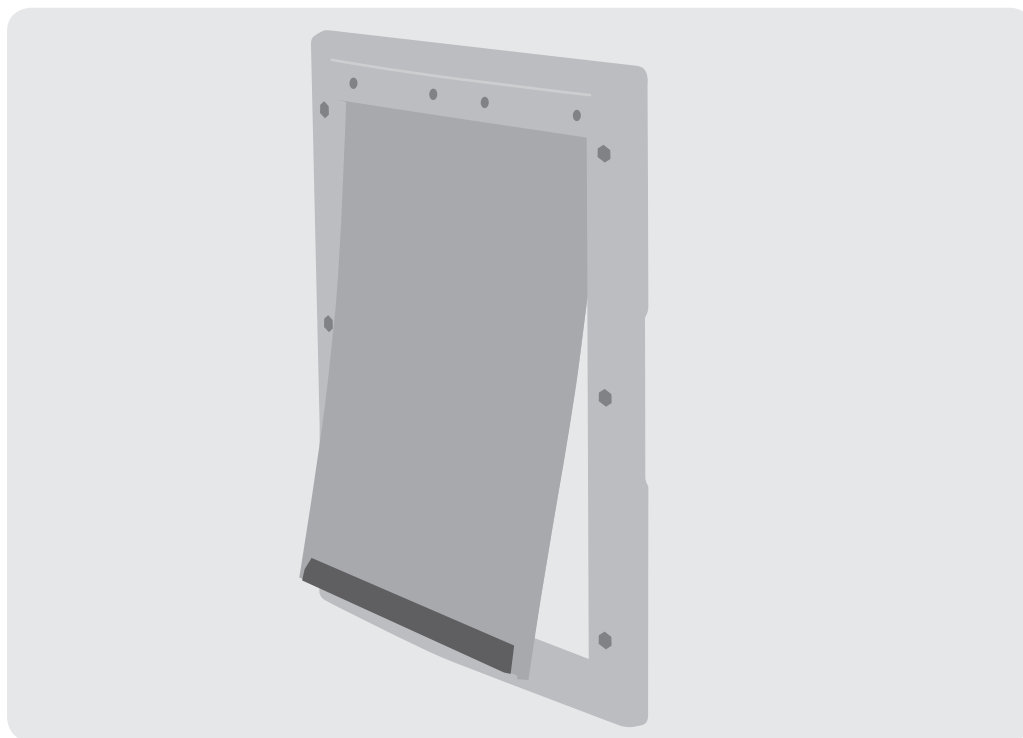


Premier PetTM



Plastic Pet Door

GPA00-16344 | Product Manual



Have questions about your Plastic Pet Door or need training tips for your pet?

Our Customer Care representatives are here to help you.

Call our USA-based Customer Care Center at

+1 (866) 381-2785

USA & Canada: Mon-Fri 8am-8pm EST | Sat 9am-5pm EST

This product includes a one year warranty.
Call, click, or chat with us before you return your product.

premierpet.com

Important Safety Information

Explanation of Attention Words and Symbols used in this guide



This is the safety alert symbol. It is used to alert you to potential personal injury hazards. Obey all safety messages that follow this symbol to avoid possible injury or death.

⚠ WARNING

WARNING indicates a hazardous situation which, if not avoided, could result in death or serious injury.

NOTICE

NOTICE is used to address safe use practices not related to personal injury.

⚠ WARNING

- When children are present in the home, it is important to consider the pet door while child proofing. The pet door may be misused potentially giving children access to hazards that may be on the other side of the pet door. Owners with swimming pools should ensure that children are monitored at all times and that the swimming pool has adequate barriers to entry. If a new hazard is created inside or outside of your home, which may be accessed through the pet door, Radio Systems Corporation™ recommends that you properly guard access to the hazard or remove the pet door. The closing panel or lock, if applicable, is provided for esthetic and energy efficiency purposes and is not intended as a security device. Radio Systems Corporation™ will not be liable for unintended use, and the owner of this product accepts full responsibility for oversight of the opening it creates.
- To avoid risk of severe injury, follow all safety instructions for your power tools, and wear safety goggles during use.
- The user, prior to installation, must become familiar with all building codes that may affect the installation of the pet door and determine, along with a licensed contractor, its suitability in a given installation. This pet door is not a fire door. It is important for the owner and contractor to consider any risks that may be present inside or outside of the pet door and any risks that may be created by subsequent changes to the property and how they may relate to the existence and use, including misuse, of the pet door.
- Be sure to use heavy scissors for cutting the core covers. If cutting a metal surface, be aware of sharp edges to prevent injury.
- It is not possible to cut holes in tempered or double pane glass except at the time of manufacture. Consult a professional glazier or glass manufacturer to install the pet door in a glass door or window.

NOTICE

- Keep these instructions, and ensure they are transferred to any new owner of the property.
- If the mounting surface (door, wall, etc.) is not level, the pet door must still be installed level to swing properly.
- When applying cutting template there should be a minimum of 3 in. between the bottom and sides of the door and the outer edge of the template to maintain the structural integrity of the door.
- Use a manual screwdriver to tighten screws. Do not overtighten. Overtightening can strip the screws or warp the pet door frame.

TABLE OF CONTENTS

What's Included..... 4

Tools Needed..... 4

Key Definitions..... 5

Installing Your Pet Door..... 5

 Determine Pet Door Location..... 5

 Prepare Door..... 5

 Cut Pet Door Opening..... 6

 Fit Plastic Core Covers..... 6

 Install Pet Door..... 7

 Training Pet..... 7

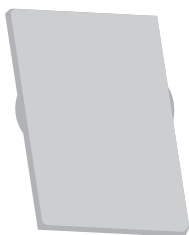
Replacement Flaps..... 8

Replacement Parts and Accessories..... 8

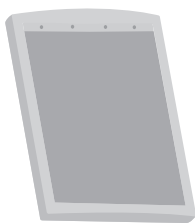
Warranty..... 9

Terms of Use and Limitations of Liability..... 9

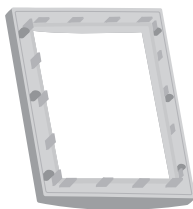
What's Included



Snap-on
Closing Cover



Interior Frame
with Flap



Exterior Frame



Plastic Core
Covers



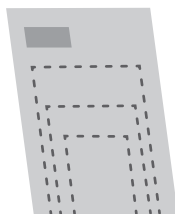
Hex Nuts

- Small 4 pcs.
- Medium 6 pcs.
- Large 10 pcs.
- X-Large 12 pcs.



Nylon Screws

- Small 4 pcs.
- Medium 6 pcs.
- Large 10 pcs.
- X-Large 12 pcs.



Template

Tools Needed

- Hammer
- Jigsaw
- Drill
- 3/8" Drill Bit
- Wire Cutters
- Slotted & Phillips Screwdrivers
- Masking or Painter's Tape
- Scissors
- Pencil
- Tape Measure
- Level
- Safety Equipment

Optional

- Duct Tape
- Caulk

NOTE: The Premier Pet™ Plastic Pet Door can be installed in most doors and walls. Additional tools and materials, such as wood framing, may be required.

Key Definitions

Outer Frame Size: Overall pet door dimensions

Cut Out Size: Opening cut in homeowner's door for proper fit and pet door installation

Replacement Flap Size: Overall flap size when removed from pet door. During extreme changes in weather, vinyl flaps can shrink during cold months and stretch in warmer months

Flap Opening Size: Usable flap size for pet to enter and exit through pet door

Interior Frame: Pet door frame on the inside of home

Exterior Frame: Pet door frame on the outside of home

Snap-on Closing Panel: Cover that snaps onto the pet door frame to close the pet door opening

Installing Your Pet Door

NOTICE

If painting the pet door, it is recommended to paint it prior to the pet door being installed. For best results, use a primer for plastics before applying your paint.

Step 1

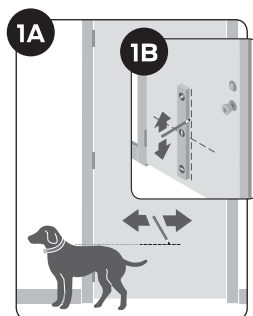
Determine Pet Door Location

1A Measure and mark your pet's shoulder height on the interior side of door.

1B Determine location for the pet door. Draw a vertical center line through the shoulder height line using a level.

NOTICE

If homeowner's door or other application is not level, the pet door must be marked level to swing properly.



Step 2

Prepare Door

2A Remove door from hinges.

2B Place on a raised level surface such as saw horses.

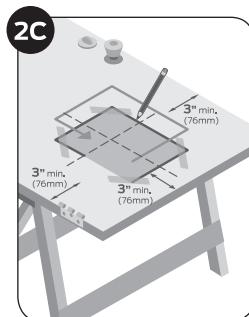
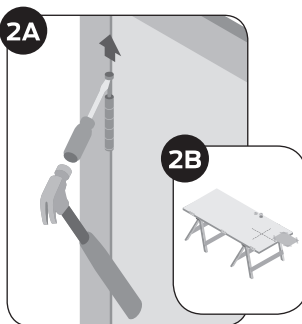
Helpful Tip: Clamp or weigh down the door to prevent it from moving.

Note: The Pet Door can be installed with the door hanging based on your skill level.

2C Cut out the correct template size. Match the marked lines on the door with the shoulder and center lines on the template. Tape the template in place and carefully trace template. Make sure to trace underneath tape and connect the corners. Now, remove the template and any excess tape from the door.

NOTICE

When applying cutting template there should be a minimum of 3" between the bottom and sides of the door and the outer edge of the cutting template to maintain the structural integrity of the door.



Step 3

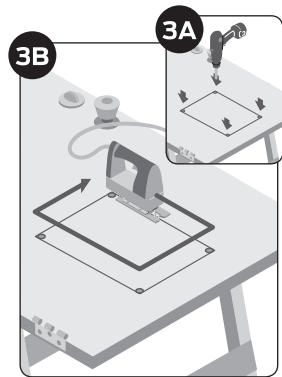
Cut Pet Door Opening

3A Drill $\frac{3}{8}$ " holes in inside corners of drawn template. These will be the pilot holes for the saw blade.

Helpful Tip: Use both hands to hold drill steady and straight at a 90° angle.

3B Beginning in one of the holes just drilled, cut along the drawn template lines. After cutting out the opening, you may need to recut to square the opening. This is necessary for the pet door frame to fit correctly.

Helpful Tip: Use proper saw blade length and type according to door thickness and material (for example a wood blade for a wood door and a metal blade for a metal door). Cut slowly using both hands to hold the saw steady and straight at a 90° angle. This will help prevent the blade from cutting unevenly between interior and exterior sides of the door.



NOTICE

Make sure there is nothing underneath the door where you will be drilling the holes or cutting out opening.

Step 4

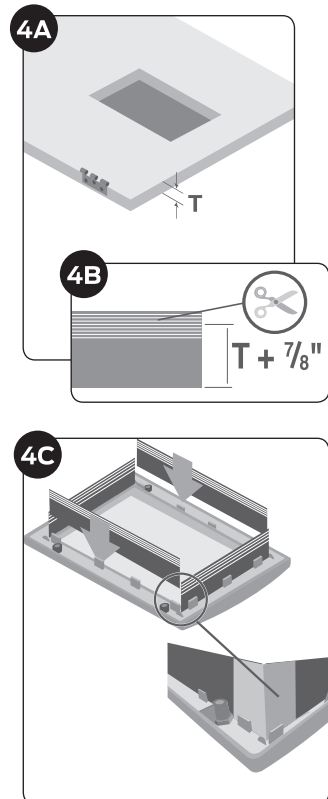
Fit Plastic Core Covers

4A Measure the thickness (**T**) of your door. Note this measurement.

4B Cut the grooved side of the plastic core covers to equal the thickness (**T**) of your door + $\frac{7}{8}$ ".

4C Place side of core covers with one rib (uncut edge) facing inside and snap into tabs of interior frame (frame with flap). Also, core covers may need to be trimmed to meet at corners.

Optional: Use duct tape in the corners of core covers to help secure in place and to improve weather resistance. Cut off any excess tape.



Step 5

Install Pet Door

Fit

Check Before putting away the jigsaw, place the interior frame (frame with the flap) inside the cut out and check the fit. Then, place the exterior frame into the underside of the door to check the fit. If frames do not fit inside the opening, you may need to recut to square opening before proceeding with installation.

Helpful Tip: Tape the flap up to keep it out of the way during the installation.

5A Place interior frame (frame with flap) into cutout. Next place exterior frame into cutout from underside of door, aligning core covers into tabs of frame. Hold frame together with one hand.

5B Drop nylon screws through holes in frame then thread hex nut to bottom of each screw. While continuing to hold frames, tighten screws until frames come together.

Optional: Caulk around the exterior frame (frame without the flap) and inside threshold where core covers meet for weather resistance.

5C Use a screwdriver to evenly tighten screws throughout frame while keeping core covers in position. It may be necessary to adjust screws to make sure pet door fit is correct.

5D Cut off excess screws length with wire cutters. Hold wire cutters flush with frame for a clean, level cut.

NOTICE

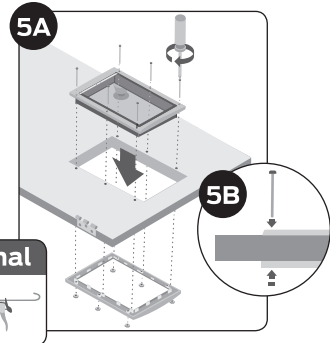
Use a manual screwdriver to tighten the screws. Do not overtighten. Overtightening can strip the thread off the screws or bow the pet door frame.

Step 6

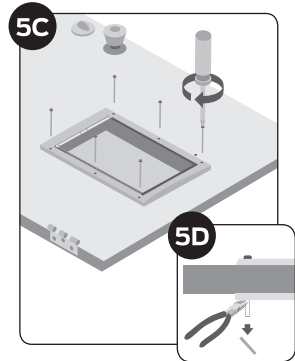
Training Pet

6A Rehang your door and begin training your pet. Tape the flap open to help your pet become familiar with the opening.

Helpful Tip: Try treats to encourage your pet to go through the pet door and become comfortable using it.



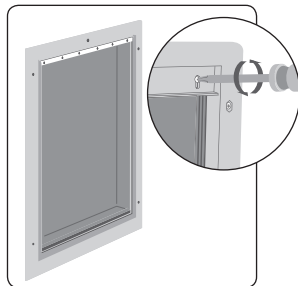
Optional



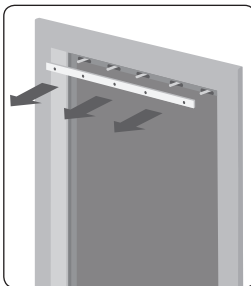
Replacement Flaps

Replace & Adjust

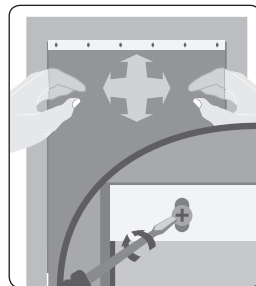
During extreme changes in weather, vinyl flaps can shrink during cold months and stretch in warmer months. Easily replace or adjust to ensure a snug fit during seasonal changes.



To Replace: Remove screws from the interior frame of pet door.



Remove bar and flap.



Replace new vinyl flap and position horizontally and vertically to fit into door frame. Replace existing bar and tighten screws in place.

To Adjust: Slightly loosen screws from interior frame of pet door.

Slightly move bar away from flap.

Adjust flap horizontally and/or vertically to fit into door frame. Push bar towards flap and tighten screws in place.

Replacement Parts and Accessories

Replacement parts can be purchased by visiting www.premierpet.com or by contacting our Customer Care Center at **+1 (866) 381-2785**.

Plastic Pet Door	Replacement Part Number
Small Replacement Flap	PAC11-11037
Medium Replacement Flap	PAC11-11038
Large Replacement Flap	PAC11-11039

Warranty

One Year Non-Transferable Limited Warranty

This Product has the benefit of a limited manufacturer's warranty. Complete details of the warranty applicable to this Product and its terms can be found at www.premierpet.com and/or are available by contacting your local Customer Care Center.

Terms of Use and Limitations of Liability

1. **Terms of Use**

Use of this Product is subject to your acceptance without modification of the terms, conditions and notices contained herein. Use of this Product implies acceptance of all such terms, conditions and notices. If you do not wish to accept these terms, conditions, and notices, please return the Product, unused, in its original packaging and at your own cost and risk to the relevant Customer Care Centre together with proof of purchase for a full refund.

2. **Proper Use**

This Product is designed for use with pets where training is desired. The specific temperament or size/weight of your pet may not be suitable for this Product. Radio Systems Corporation™ recommends that this Product is not used if your pet is aggressive and accepts no liability for determining suitability in individual cases. If you are unsure whether this Product is appropriate for your pet, please consult your veterinarian or certified trainer prior to use. Proper use includes, without limitation, reviewing the entire Training Guide and any specific safety information statements.

3. **No Unlawful or Prohibited Use**

This Product is designed for use with pets only. This pet training device is not intended to harm, injure or provoke. Using this Product in a way that is not intended could result in violation of Federal, State or local laws.

4. **Limitation of Liability**

In no event shall Radio Systems Corporation™ or any of its associated companies be liable for (i) any indirect, punitive, incidental, special or consequential damage and/or (ii) any loss or damages whatsoever arising out of or connected with the misuse of this Product. The Purchaser assumes all risks and liability from the use of this Product to the fullest extent permissible by law.

5. **Modification of Terms and Conditions**

Radio Systems Corporation™ reserves the right to change the terms, conditions and notices governing this Product from time to time. If such changes have been notified to you prior to your use of this Product, they shall be binding on you as if incorporated herein.