

Assembly Instructions for Model 1298224



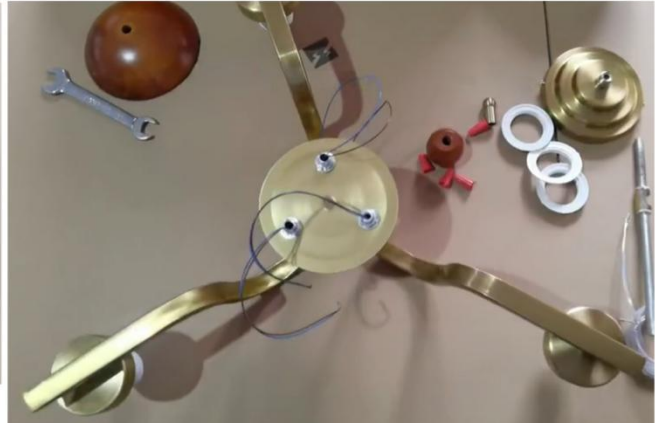
STEP 1

Decompose the middle light pole.



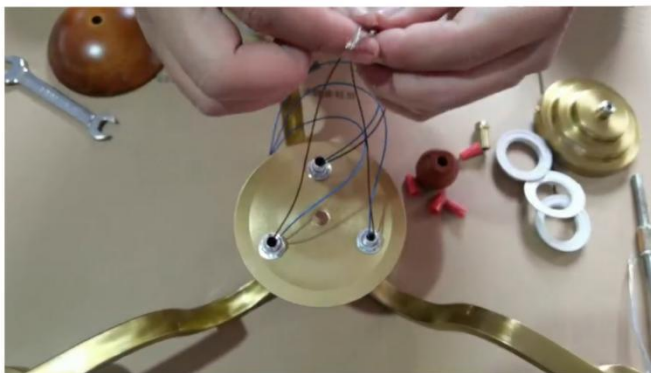
STEP 2

Install the lamp arm and screw in the nut to secure it. The lamp arm wire passes through the lamp panel.



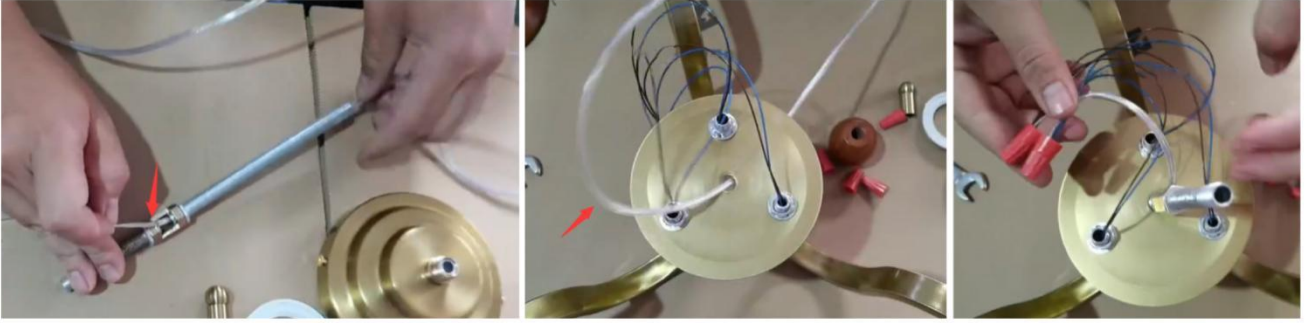
STEP 3

Twist the same colored wires of the lamp arm together.



STEP 4

Pass the main line through the boom.
The main line passes through the lamp panel.
Install the boom, and then connect the main wire to the lamp arm wire.



STEP 5

Install the half-circle wood and secure it.



STEP 6

Install the square wood and screw in the nuts to secure it.



STEP 7

Install boom. The main line passes through the boom.



STEP 8

Install lampshade.



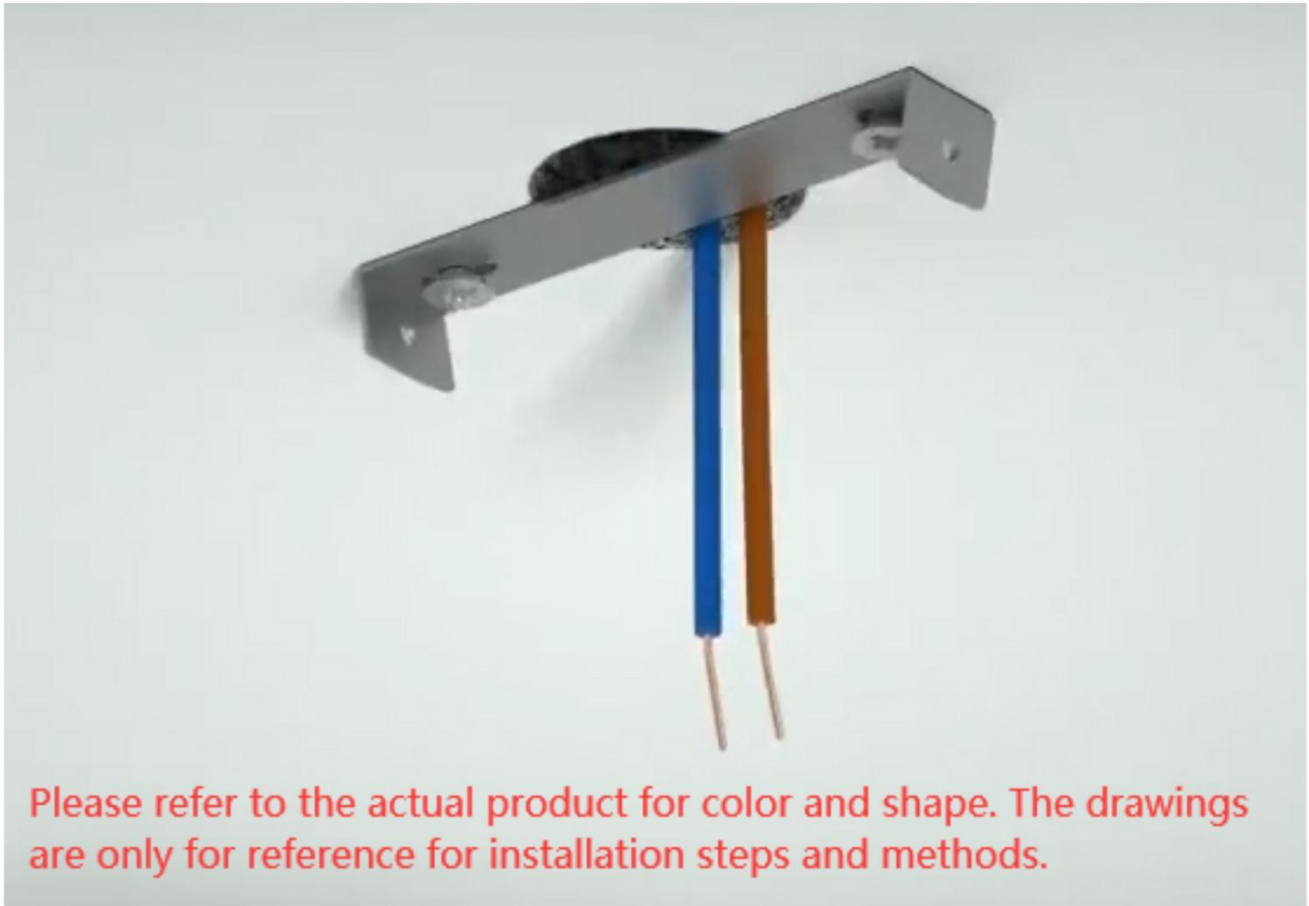
STEP 9

Install the ceiling canopy. The main line passes through the ceiling canopy.



STEP 10

Remove the mounting bracket from the ceiling canopy.
Mark the drilling position on ceiling with the help of the mounting bracket.
Drill holes on the marks and stick the expansion anchors into the holes.
Mount the mounting bracket on the ceiling.

**STEP 11**

Hold the fixture close to ceiling.
Connect the wires of the lamp body to the reserved wires at home.
The red/black wire is connected to the live wire, the blue/white wire is connected to the neutral wire.

STEP 12

Install the ceiling canopy to the mounting bracket on the ceiling and fix it with screws.

Your fixture is now assembled and ready to use.