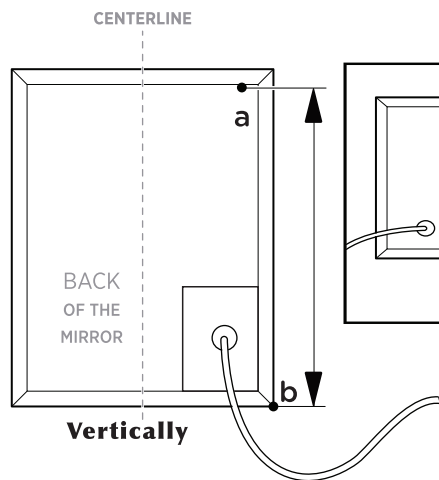


INSTALLATION INSTRUCTIONS

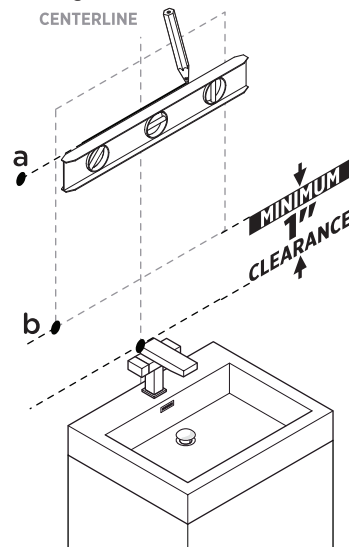
1

Measure the distance between the bottom of the mirror and point a.



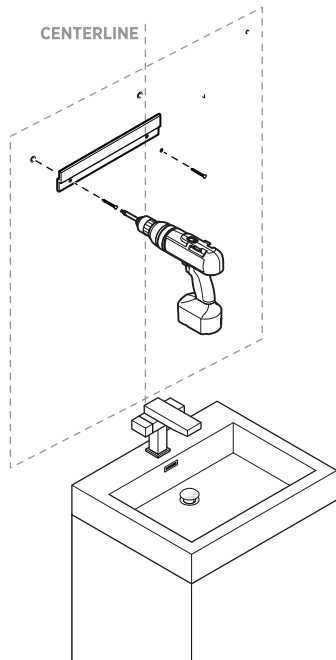
2

Draw a horizontal line from the point a using a level.



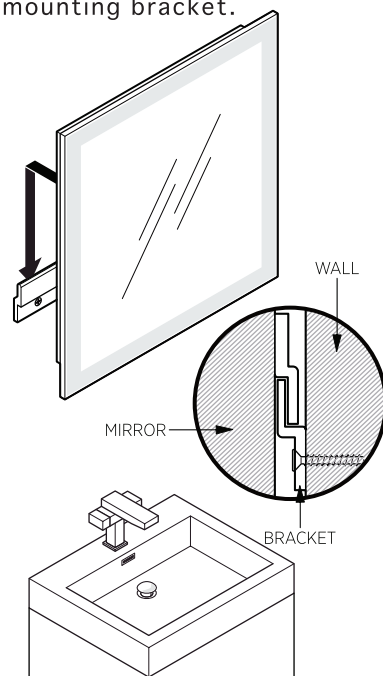
3

Attach the mounting bracket to the wall.

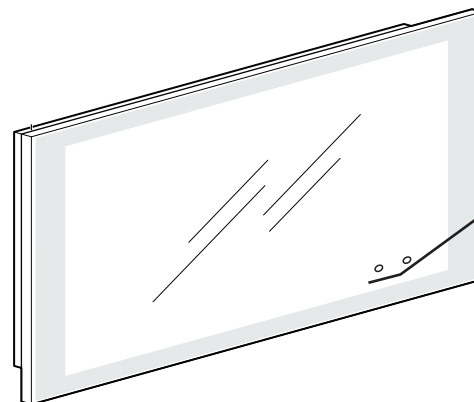


4

Hang the mirror on the mounting bracket.



INSTRUCTIONS FOR USE



Long Press
Adjust the light dimming

Press
white → yellow → neutral



Press
ON/OFF

MIRROR FEATURE

AC120V / 60Hz
1950LM, 3000-6500K CCT, Ip65
Dimmable touch switch for surface LED
Vertical and horizontal mount options
With power-off memory function

DEFOGGER FEATURE

AC120V / 60Hz, IP54
Power: 60w
Input: $\leq 2.5W/dm^2$
Temperature rise: 10-20°C
Max Surface temp: 60°C

CAUTION

Mirror and mirror's body are constructed of mirrored glass and aluminum. Use a damp cloth to clean your mirrors. Do not use any abrasive material as it may damage the surface and finish of the mirror. A mild detergent may be used to clean the surfaces of the mirror. When cleaning spray the cloth, not the mirrors or surrounding surfaces.