

INSTALLATION INSTRUCTION

Integral LED Wall Sconce Bracket

SAFETY INSTRUCTION

IMPORTANT: NEVER attempt any work without shutting off the electricity.

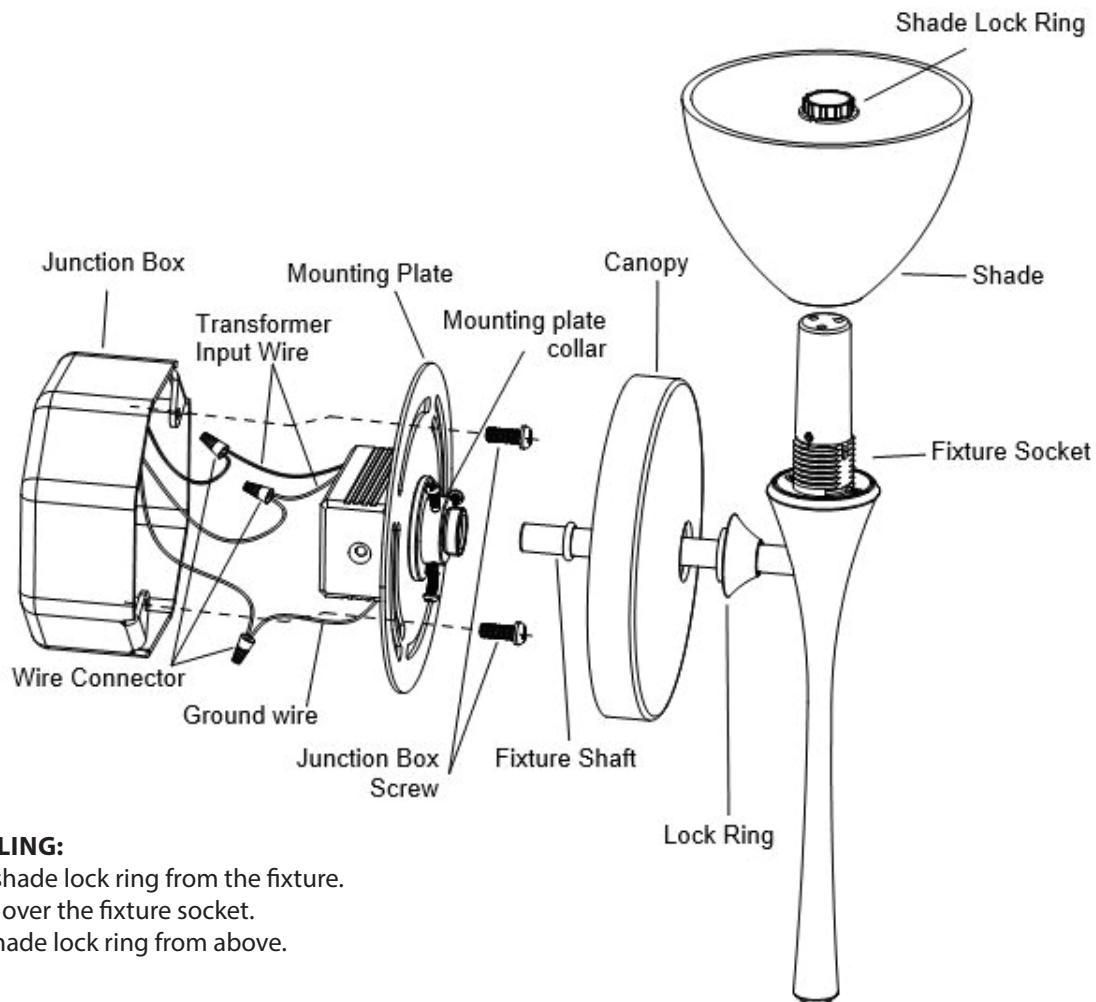
- Always turn off power at main switch prior to installation to prevent electrical shock.
- Intended for installation in accordance with National Electrical Code, and local regulations.
- For installation by a qualified electrician.
- Install over a standard 4-inch junction box.

OVERVIEW

Check catalog for various style and color choices. It comes with a self-contained electronic transformer that may be dimmed with an electronic low voltage dimmer switch.

FIXTURE INSTALLATION:

1. Unscrew the lock ring and separate the canopy and mounting plate.
2. Connect ground wire from junction box to the grounding wire on the mounting plate.
3. Connect corresponding colored wires from the junction box to fixture wires, with wire connectors.
4. Tuck excess wire into the junction box. Attach the mounting plate to the junction box using the slotted holes.
5. Adjust the fixture shaft, align the socket vertically, by loosen and tighten the three screws on the mounting plate collar.
6. Secure the canopy to the mounting plate by tightening lock ring.



SHADE INSTALLING:

1. Unlock the shade lock ring from the fixture.
2. Place shade over the fixture socket.
3. Screw the shade lock ring from above.

INSTALLATION INSTRUCTION

Integral LED Wall Sconce Bracket

SAFETY INSTRUCTION

IMPORTANT: NEVER attempt any work without shutting off the electricity.

- Always turn off power at main switch prior to installation to prevent electrical shock.
- Intended for installation in accordance with National Electrical Code, and local regulations.
- For installation by a qualified electrician.
- Install over a standard 4-inch junction box.

OVERVIEW

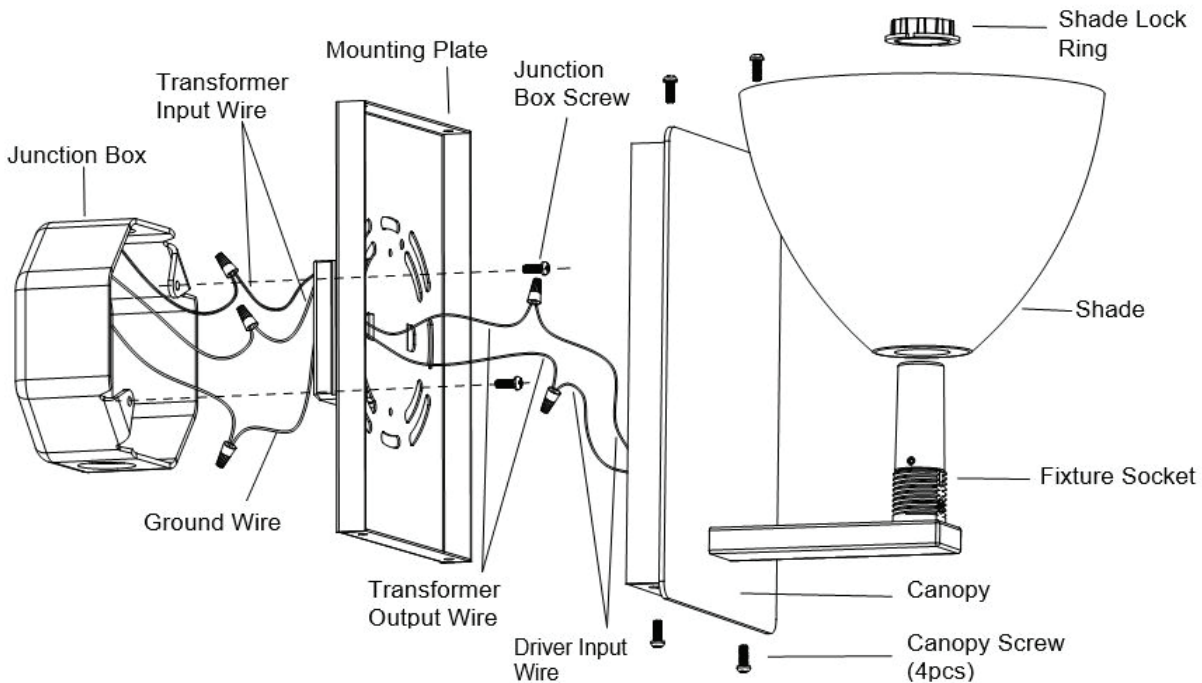
Check catalog for various style and color choices. It comes with a self-contained electronic transformer that may be dimmed with an electronic low voltage dimmer switch.

FIXTURE INSTALLATION:

1. Loosen the four canopy screws and separate the canopy from the mounting plate.
2. Connect ground wire from junction box to the grounding wire on the mounting plate.
3. Connect corresponding colored wires from the junction box to fixture wires, with wire connectors.
4. Tuck excess wire into the junction box. Attach the mounting plate to the junction box using the slotted holes.
5. Connect the transformer output wires to the driver input wires using the wire connector.
6. Position the canopy to the mounting plate, and tighten the four screws loosened earlier.

INSTALLING LAMP & SHADE:

1. Unlock the shade lock ring from the fixture socket.
2. Position shade so that threads go through the hole in the shade and screw on shade lock ring from above.



INSTALLATION INSTRUCTION

Low Voltage Wall Sconce Bracket

SAFETY INSTRUCTION

IMPORTANT: NEVER attempt any work without shutting off the electricity.

- Always turn off power at main switch prior to installation to prevent electrical shock.
- Intended for installation in accordance with National Electrical Code, and local regulations.
- For installation by a qualified electrician.
- Install over a standard 4-inch junction box.

OVERVIEW

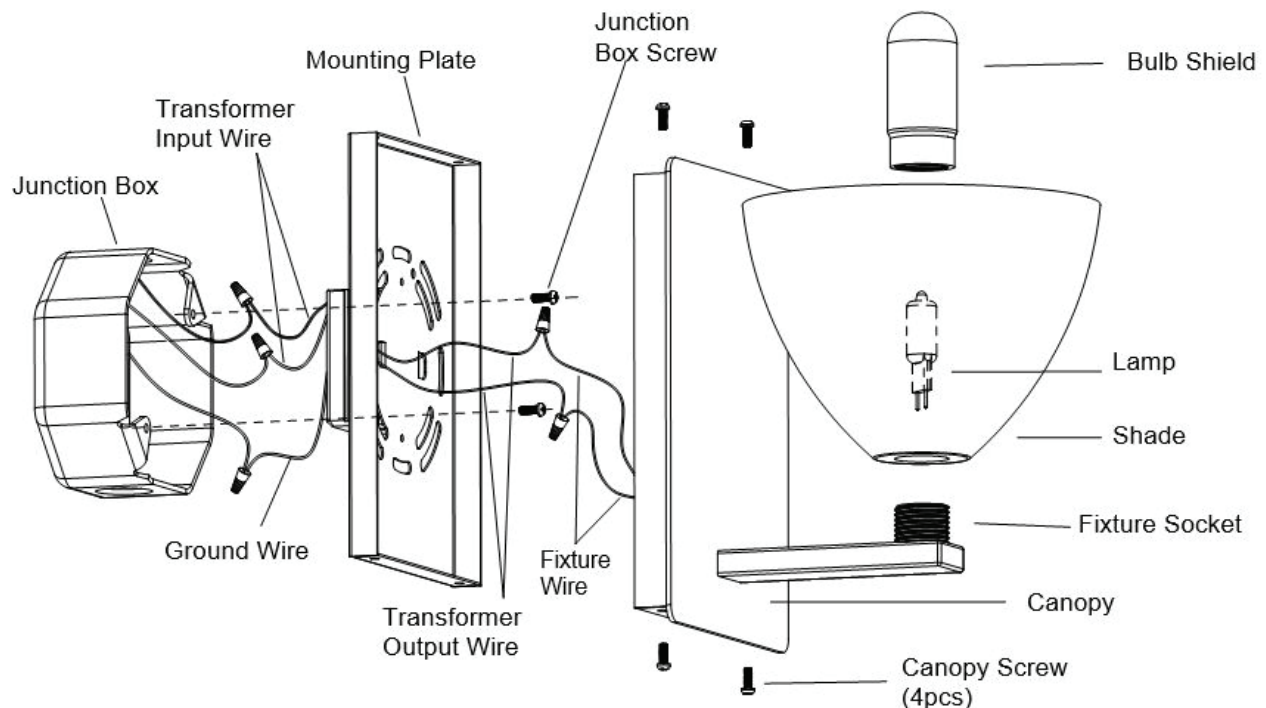
Check catalog for various style and color choices. It comes with a self-contained electronic transformer that may be dimmed with an electronic low voltage dimmer switch.

FIXTURE INSTALLATION:

1. Loosen the four canopy screws and separate the canopy from the mounting plate.
2. Connect ground wire from junction box to the grounding wire on the mounting plate.
3. Connect corresponding colored wires from the junction box to fixture wires, with wire connectors.
4. Tuck excess wire into the junction box. Attach the mounting plate to the junction box using the slotted holes.
5. Connect the transformer output wires to the fixture wires using the wire connector.
6. Position the canopy to the mounting plate, and tighten the four screws loosened earlier.

INSTALLING SHADE:

1. Use 12V 50W bi-pin Halogen lamp with G6.35 base (supplied).
2. Insert the lamp into the fixture by aligning the pins with the socket holes, and gently pushing until lamp seats.
3. Position shade so that threads go through the hole in the shade and screw on Bulb Shield from above.



INSTALLATION INSTRUCTION

Quick Adjust Wall Sconce Bracket

SAFETY INSTRUCTION

- Do not conceal or extend exposed conductors through a building wall.
- Do not install this system in wet locations.
- To reduce the risk of fire and burns, do not install this lighting system where the exposed bare conductors can be shorted or contact any conductive materials.
- Make sure all connections are tight.
- Do not install any luminaire closer than 6 inches from any curtain, or similar combustible materials.
- Turn off electrical power before modifying the lighting system in any way.
- Install over a standard 4 inch junction box.

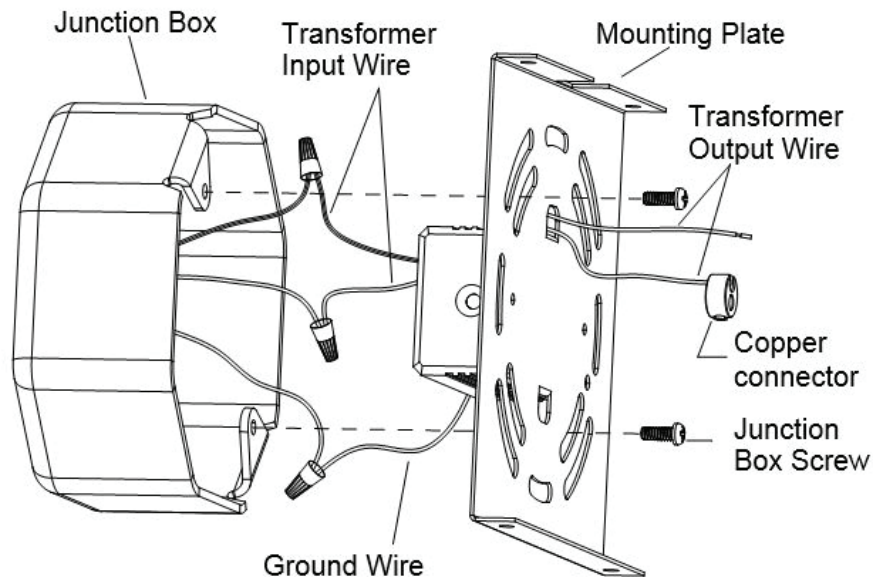
OVERVIEW

This is designed to fit all their Pendants. The pendant weight should be no more than 5 pounds.

It comes with a self-contained electronic transformer that may be dimmed with an electronic low voltage dimmer switch.

FIXTURE INSTALLATION:

1. Loosen the four screws of the canopy, and separate the canopy from the fixture.
2. Support canopy and guide the black and white wires from the transformer into the junction box.
3. Connect ground wire from junction box to the green grounding wire from the base plate.
4. Connect corresponding line voltage wires from the junction box to transformer wires (white wire connects to white wire and black wire connects to black wire), with wire nuts (supplied). Tuck excess wire into the junction box.
5. Attach the mounting plate to the junction box using the slotted holes and screws.

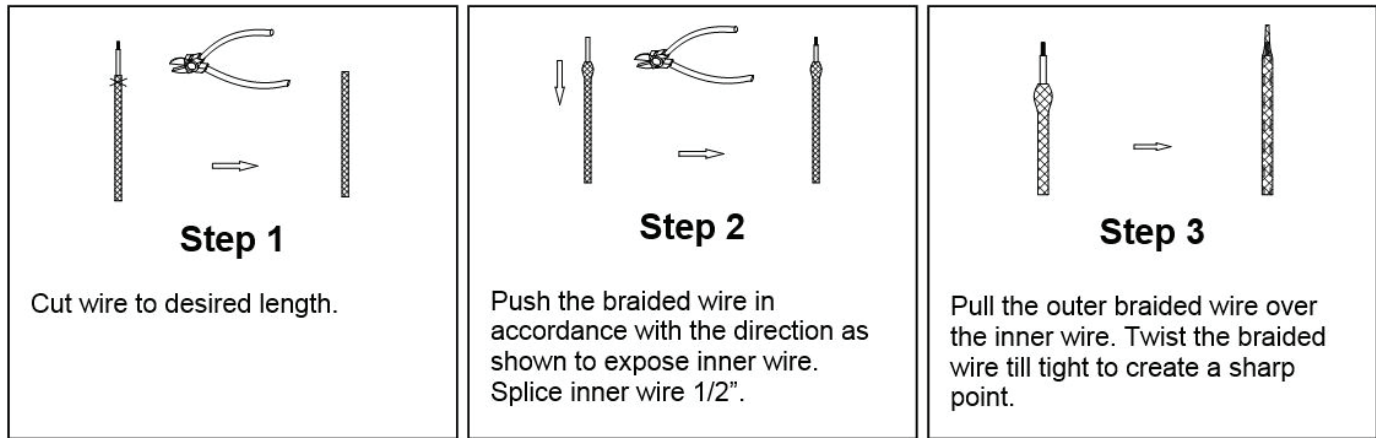


INSTALLATION INSTRUCTION

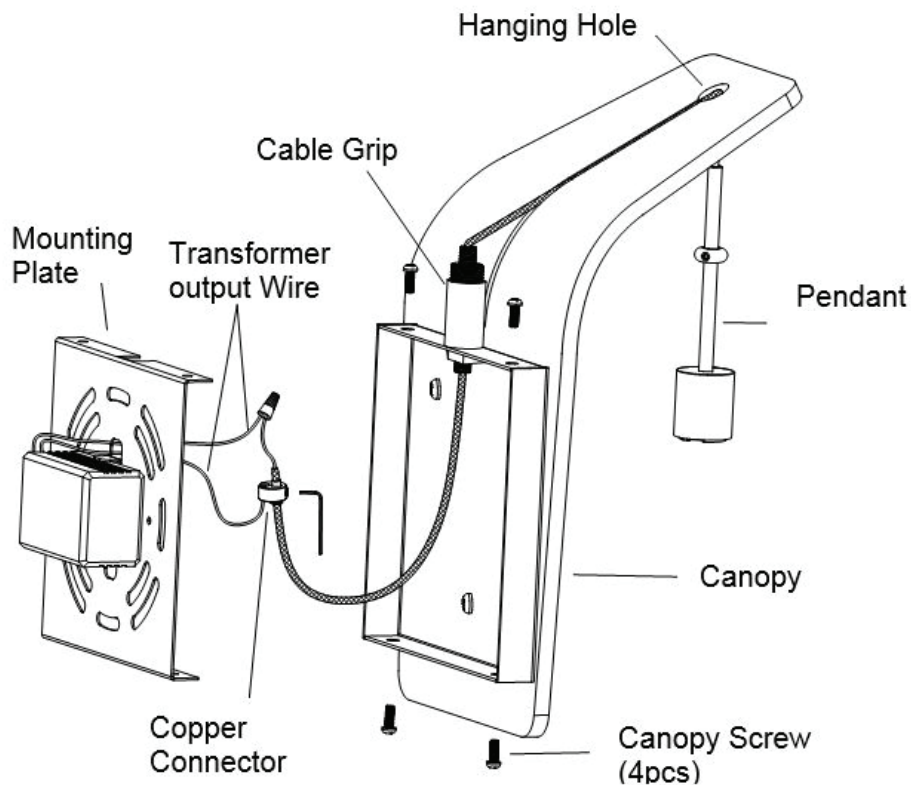
Quick Adjust Wall Sconce Bracket

PENDANT INSTALLATION:

1. Make the desired cut of the "braided cord" for proper mounting height. Trim 1/2" of insulation from the inner wire.



2. Refer to the instructions of the pendant and the glass shade, assemble the glass shade to the pendant (the pendant and the glass shade are ordered separately).
3. Feed the braided cord through the hanging hole and cable grip, and feed the braided cord until the pendant at the desired height. It also can be adjusted after the installation completed.



INSTALLATION INSTRUCTION

Quick Adjust Wall Sconce Bracket

CANOPY INSTALLATION

1. Position the side collar (supplied) so that a small section (1/16") of braided cord protrudes from the top of the collar. (See detail 1)
2. Feed the braided cord and side collar into the hole of the copper connector and tighten the set screw with Allen wrench (supplied). (See detail 2)
3. Use wire nuts (supplied) to connect the protruding braided cord to the wire coming from the transformer.
4. Raise the canopy cover and make sure that wires are contained in the canopy cover.
5. Tighten the four canopy screws.

