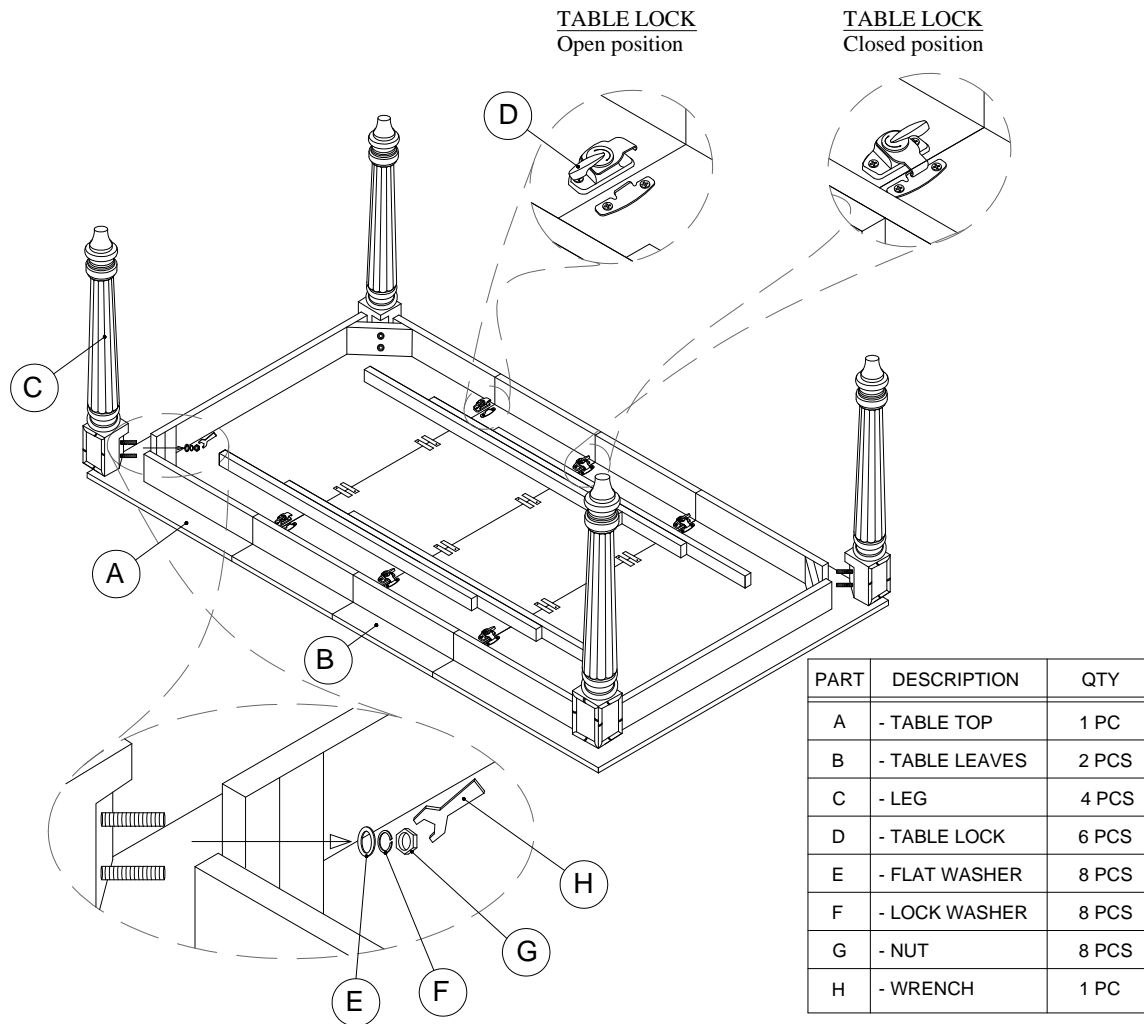


# LEXINGTON

## HOME BRANDS

### ASSEMBLY INSTRUCTIONS

#### 531-877 Rectangular Dining Table



1. Place table top (A) upside down on non-marring surface.
2. Insert bolts on leg (C) through holes in corner block on table top. Use wrench (H) to attach leg to corner block with flat washers (E), lock washers (F), and nuts (G). Tighten both bolts securely.
3. Repeat step 2 for other (3) legs.
4. Return assembled table to an upright position.

#### To Attach Leaves:

1. Open table locks (D) on underside of table, located between half-tops on each side.
2. Pull both ends of table at same time to separate half-tops. Open table enough to insert leaves.
3. Place table leaf (leaves) between half-tops so that pins on leaves align with holes on half-tops.
4. Push table on each end until fully closed.
5. Close table locks on underside of table between each leaf and half-top.

For additional consumer assistance please contact your Lexington dealer or call our Consumer Services Department at 1-336-474-5300, Monday-Friday, 8-5 Eastern