



Note: Handlesets fit doors 1-3/4" to 2" thick.

WARNING: USE OF POWER DRIVERS WILL STRIP HEADS OF SCREWS

A

USE INCLUDED DOOR PREPARATION TEMPLATE FOR NON-PREPARED DOORS.

USE INCLUDED PLASTIC TEMPLATE TO LOCATE AND DRILL THE TWO TALL PLATE 1/4" MOUNTING HOLES, AND THE 1/4" BOTTOM GRIP MOUNTING HOLE. (See note on reverse side.)

B Install deadbolt & handleset latches.

Deadbolt Tongue (Part #1A)
Deadbolt Latch (Part #1)
Deadbolt Faceplate (Part #15)
Post Holes
Edge Bore Holes
Entrance Latch (Part #13)
Latch Tongue (Part #13A)
Latch Faceplate (Part #14)
3/4" Latch & Strike Wood Screws (Part #2)
3/4" Latch & Strike Wood Screws (Part #2)

(See D Below Before Deadbolt Latch Installation.)
(See Latch Tongue Note in Panel C)

Door-Inside

C Latch Tongue Note

Bevel side of latch tongue should contact curved end of face plate, and curved end of strike plate.

Bevel Side
Face Plate Curve
Strike Plate Curve
Handleset Dustbox

D Deadbolt Latch Tongue Note

Door Inside

Deadbolt Tongue must be EXTENDED during installation.

E

Install screw extenders into exterior plate.

Screw Extenders (part #8)

Tighten securely.

F Install cylinder into exterior plate.

Cylinder Assembly (part #3)
Spin Ring (part #3c)

Tailpiece must be VERTICAL during installation.

G

Place exterior plate on door outside. Attach deadbolt adaptor plate with provided screws.

DO NOT FULLY TIGHTEN THESE SCREWS.

Deadbolt Adaptor Plate (part #5)
2" Machine Screws (part #6)
Cylinder (part #3)
Door Inside

H

Insert bottom grip mounting screw.

DO NOT FULLY TIGHTEN THIS SCREW.

Wait to install the mounting screw cover until you have completed step K.

Bottom Grip Mounting Screw (part #21)
Mounting Screw Cover (part #22)
Screw Cover Adapter (part #20)

Door-Outside

I

Install adapter plate.

DO NOT FULLY TIGHTEN THESE SCREWS.

Adapter Plate (part #18)
1-1/2" Adapter Plate Machine Screws (part #17)

Door-Inside

J

Slide handleset up, and hold, and tighten deadbolt screws.

Tighten adapter plate screws.

Door-Outside

K

Check operation by pressing the thumbpiece down.

Tighten bottom grip mounting screw and check operation again.

Install bottom mounting screw cover.

Thumb-piece
Door-Outside

L

Attach tall plate with included screws.

Check deadbolt operation by turning thumbturn and key.

Check knob/lever operation. Latch tongue should retract and extend smoothly.

1-3/4" Machine Mounting Screws

Door-Inside

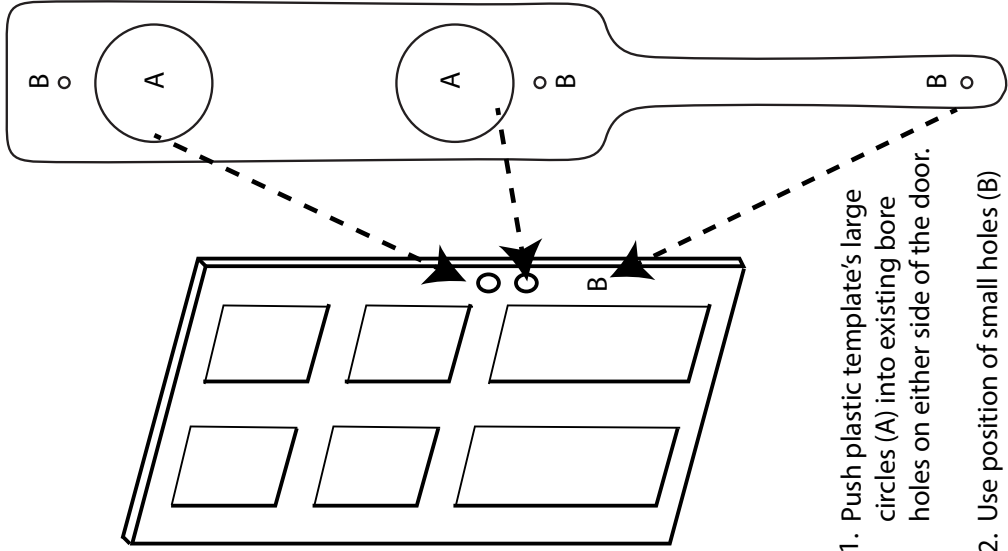
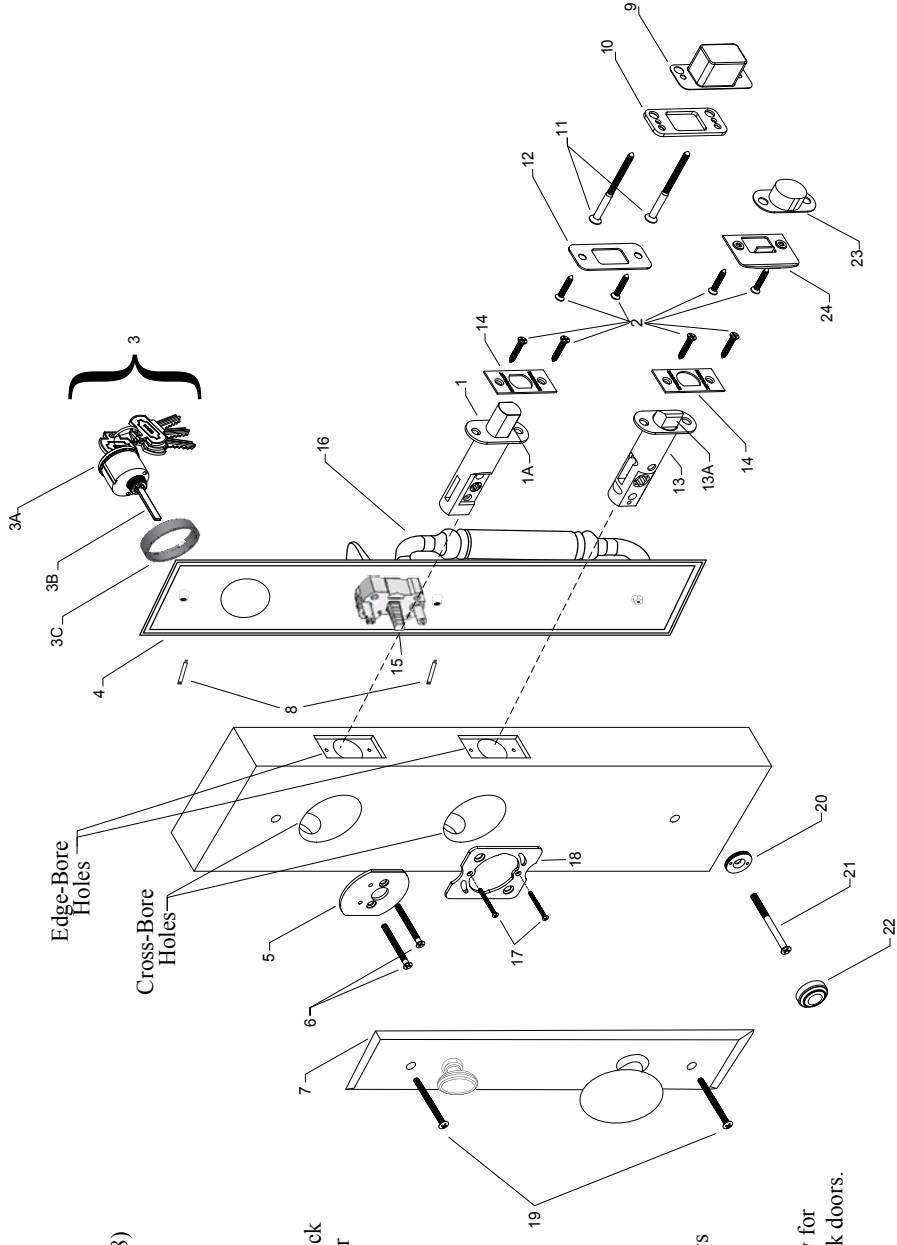
M Install jamb strike plate.

Dust Box (Part #9)
Door Frame Reinforcer (Part #10)
Strike Plate (Part #12)
3" Wood Screws (Part #11)
3/4" Latch & Strike Wood Screw (Part #2)
Door Jamb

Exploded Drawing Single Cylinder Handset– Tall Plate with One-Piece Exterior Plate

Part Number	Part Description
-------------	------------------

- | | |
|------|---|
| 1. | Deadbolt Latch |
| 1A. | Latch Tongue |
| 2. | 3/4" Faceplate & Strike Wood Screws (8) |
| 3. | Cylinder Assembly (W/Keys) |
| 3A. | Cylinder Body |
| 3B. | Tailpiece |
| 3C. | Spin Ring |
| 4. | One-Piece Exterior Plate |
| 5. | Deadbolt Adapter Plate |
| 6. | 2" Machine Screws (2) for 1-3/4" thick doors. 2-1/4" Machine Screws (2) for 2" thick doors. |
| 7. | Tall Plate |
| 8. | Screw Extenders |
| 9. | Dustbox for Deadbolt |
| 10. | Door Frame Reinforcer |
| 11. | 3" Reinforcer Wood Screws (2) |
| 12. | Strike Plate for Deadbolt |
| 13. | Handset Latch |
| 13A. | Latch Tongue |
| 14. | Latch Faceplate |
| 15. | Handset Spindle |
| 16. | One-Piece Handset |
| 17. | 1-1/2" Adapter Plate Machine Screws |
| 18. | Adapter Plate |
| 19. | 1-3/4" Machine Mounting Screws |
| 20. | Screw Cover Adapter |
| 21. | 2-1/2" Bottom Grip Mounting Screw for 1-3/4" thick doors. 2-3/4" for 2" thick doors. |
| 22. | Mounting Screw Cover |
| 23. | Dustbox for Handset |
| 24. | Strike Plate for Handset |



1. Push plastic template's large circles (A) into existing bore holes on either side of the door.
2. Use position of small holes (B) to mark and drill 1/4" holes one inch into the door.
3. Remove the plastic template and push plastic template's large circles (A) into existing bore holes on the opposite side of the door.
4. Use position of small holes (B) to mark and drill 1/4" holes completely through the door.