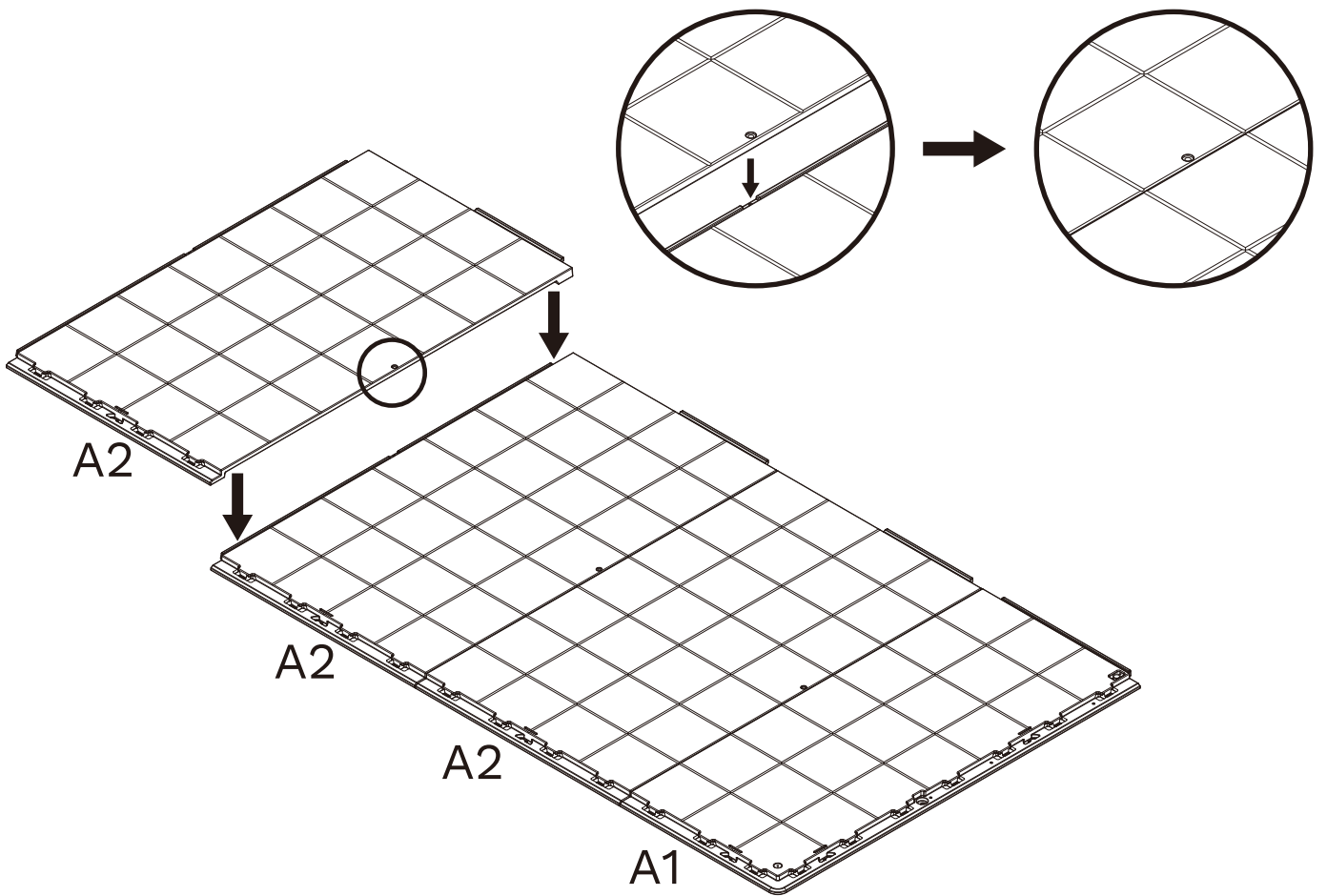
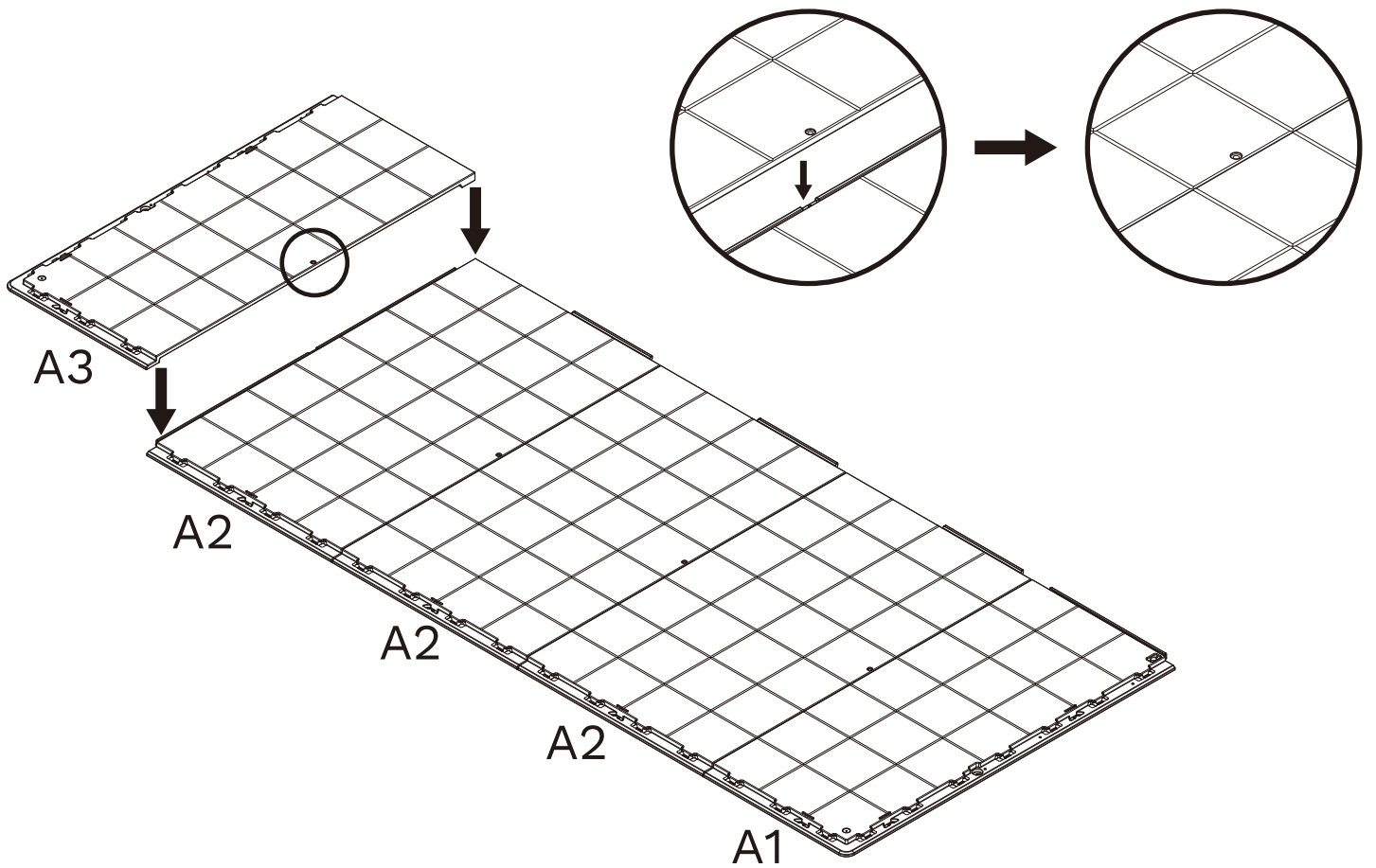


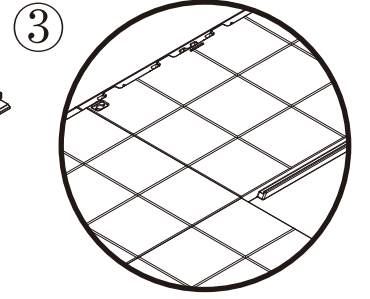
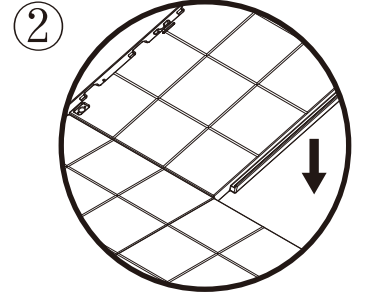
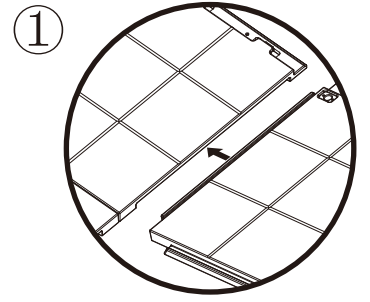
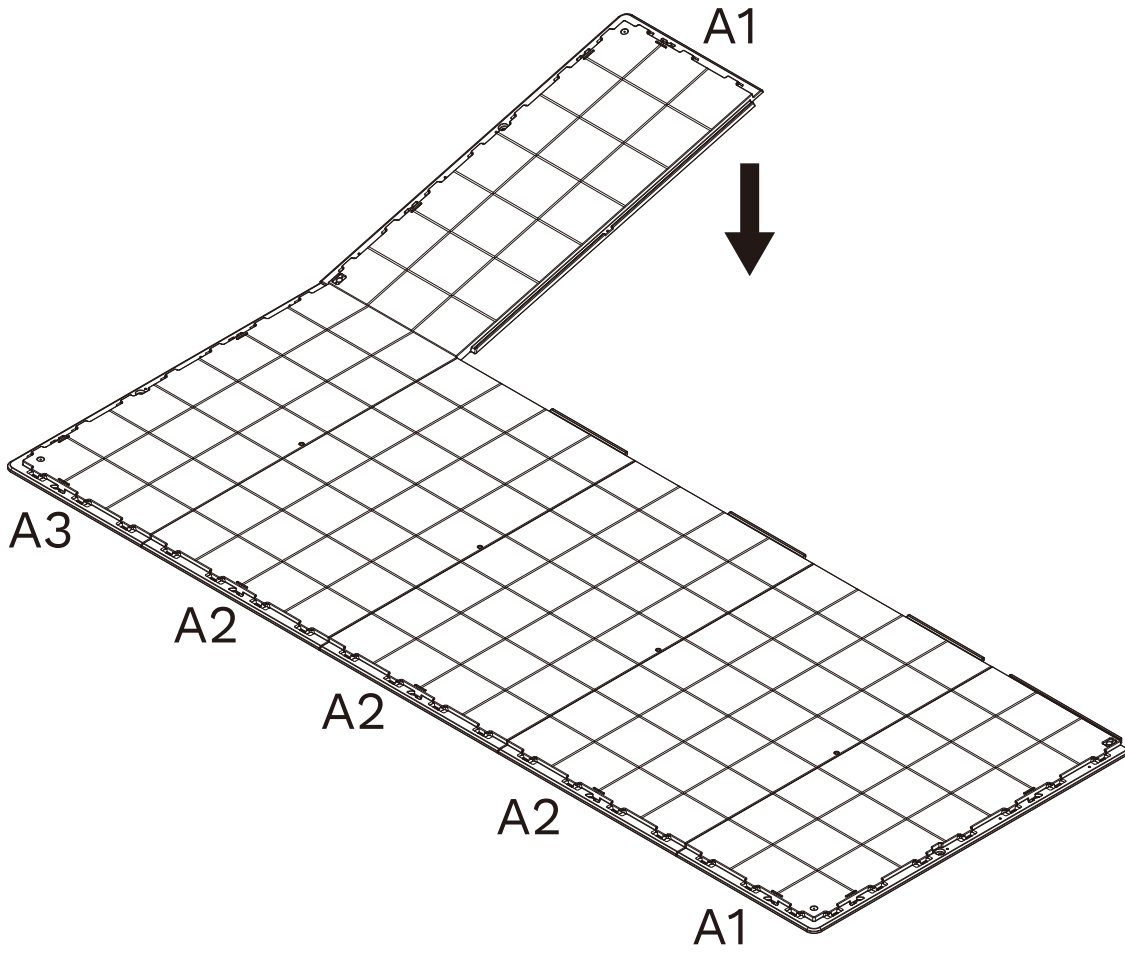
STEP 3



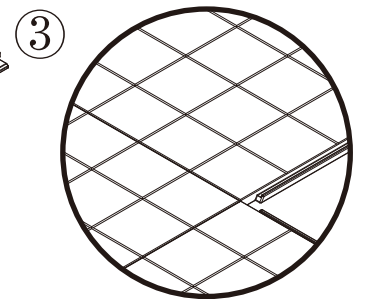
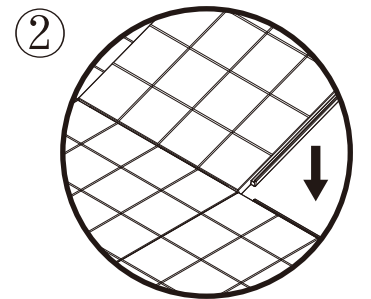
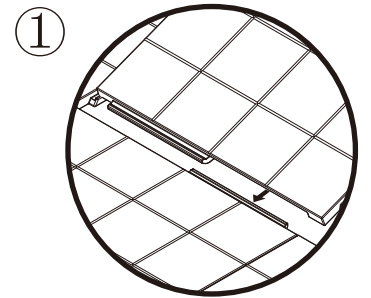
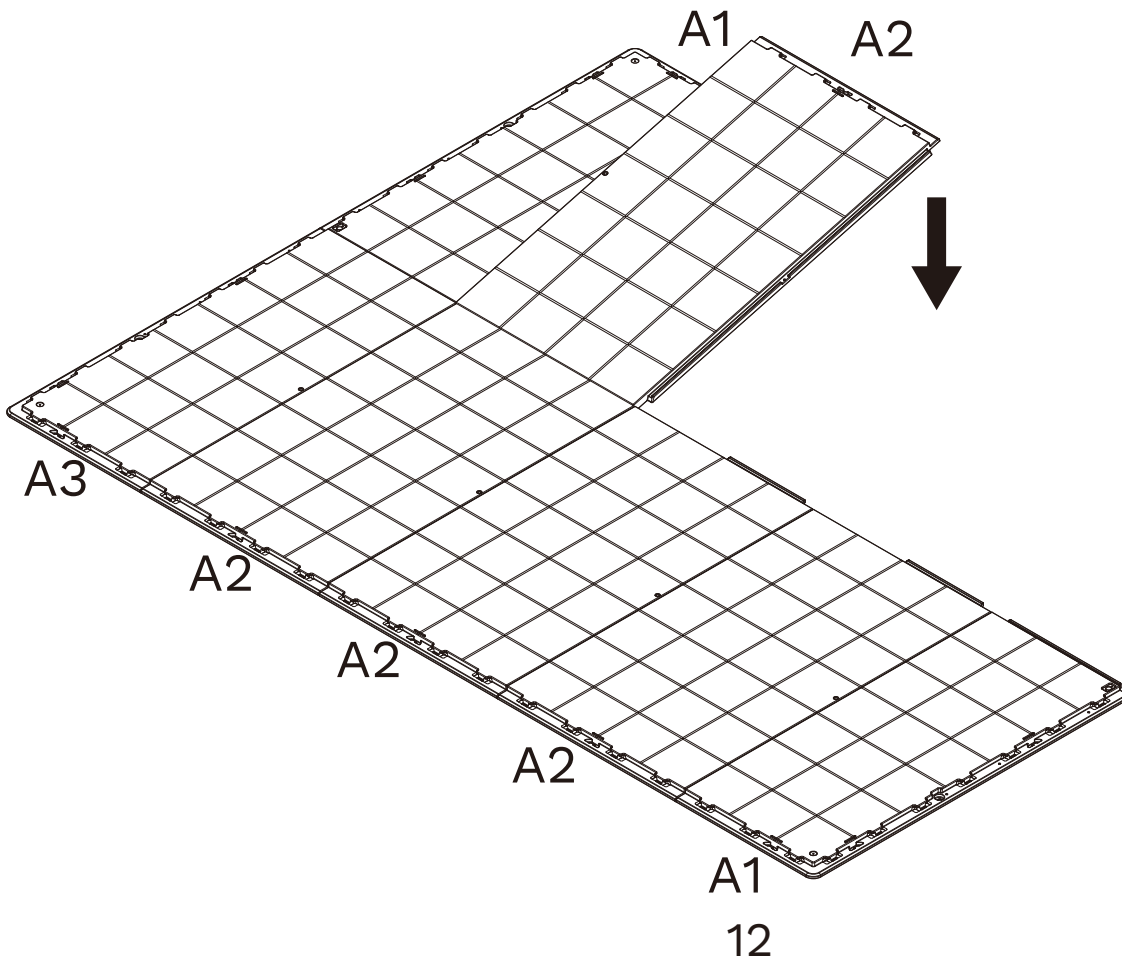
STEP 4



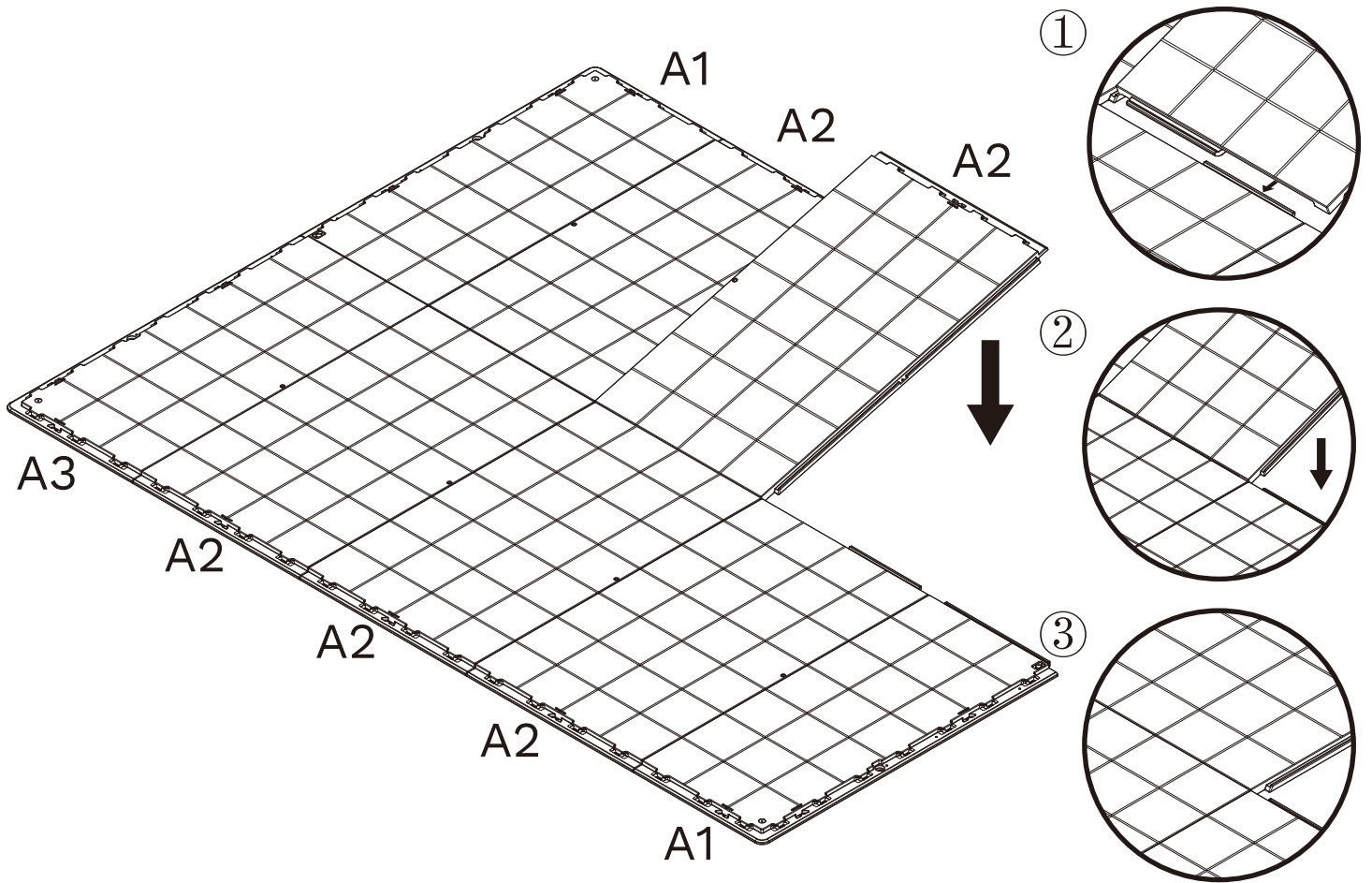
STEP 5



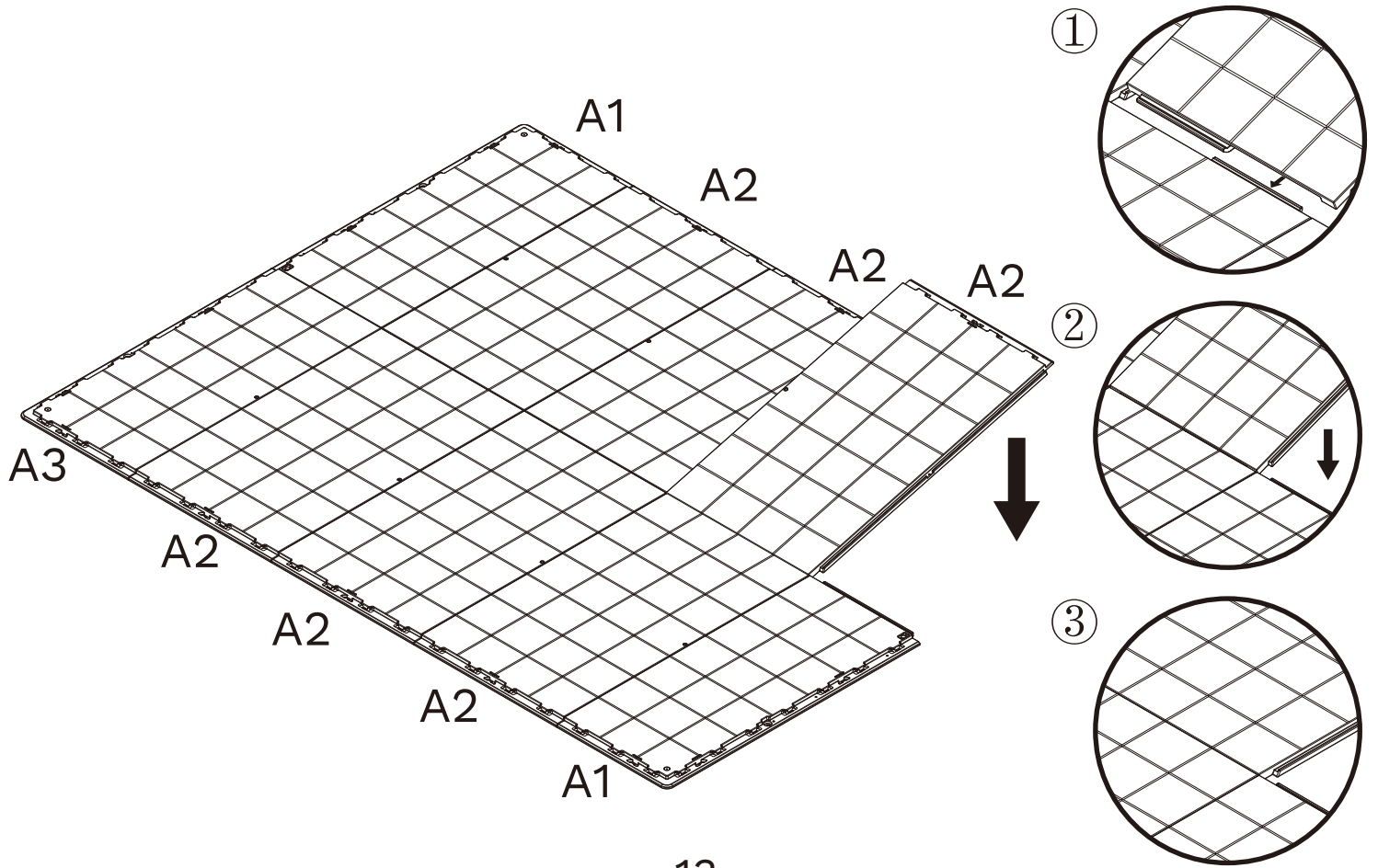
STEP 6



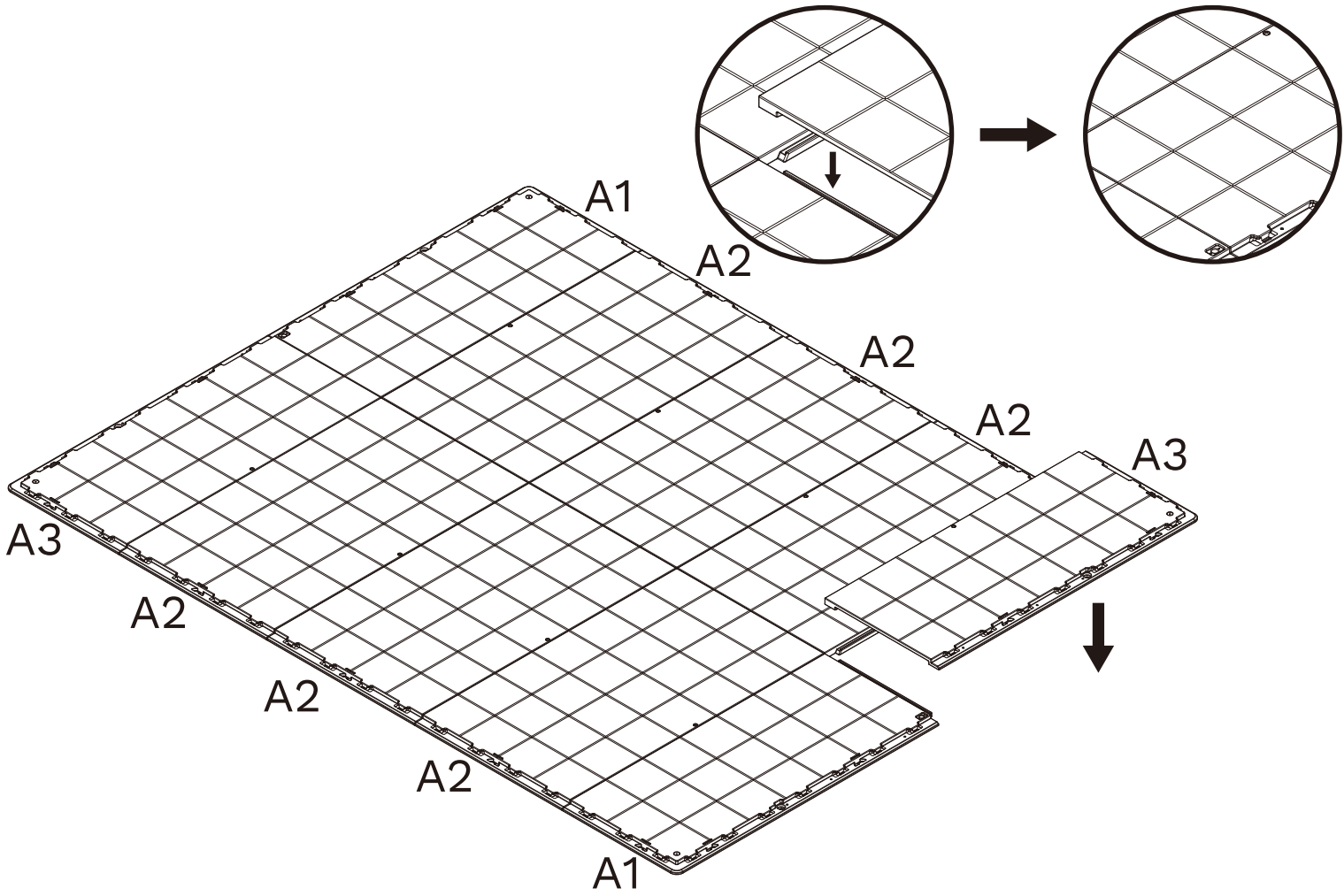
STEP 7



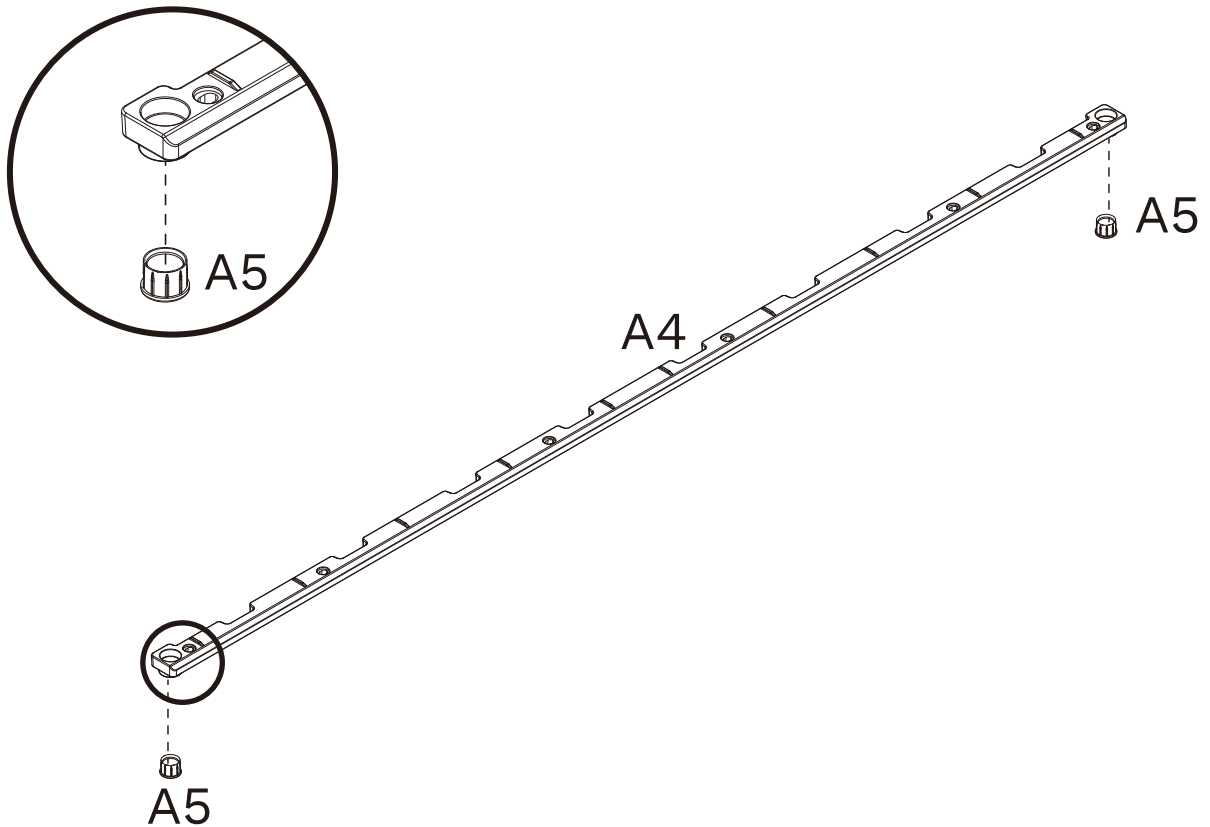
STEP 8



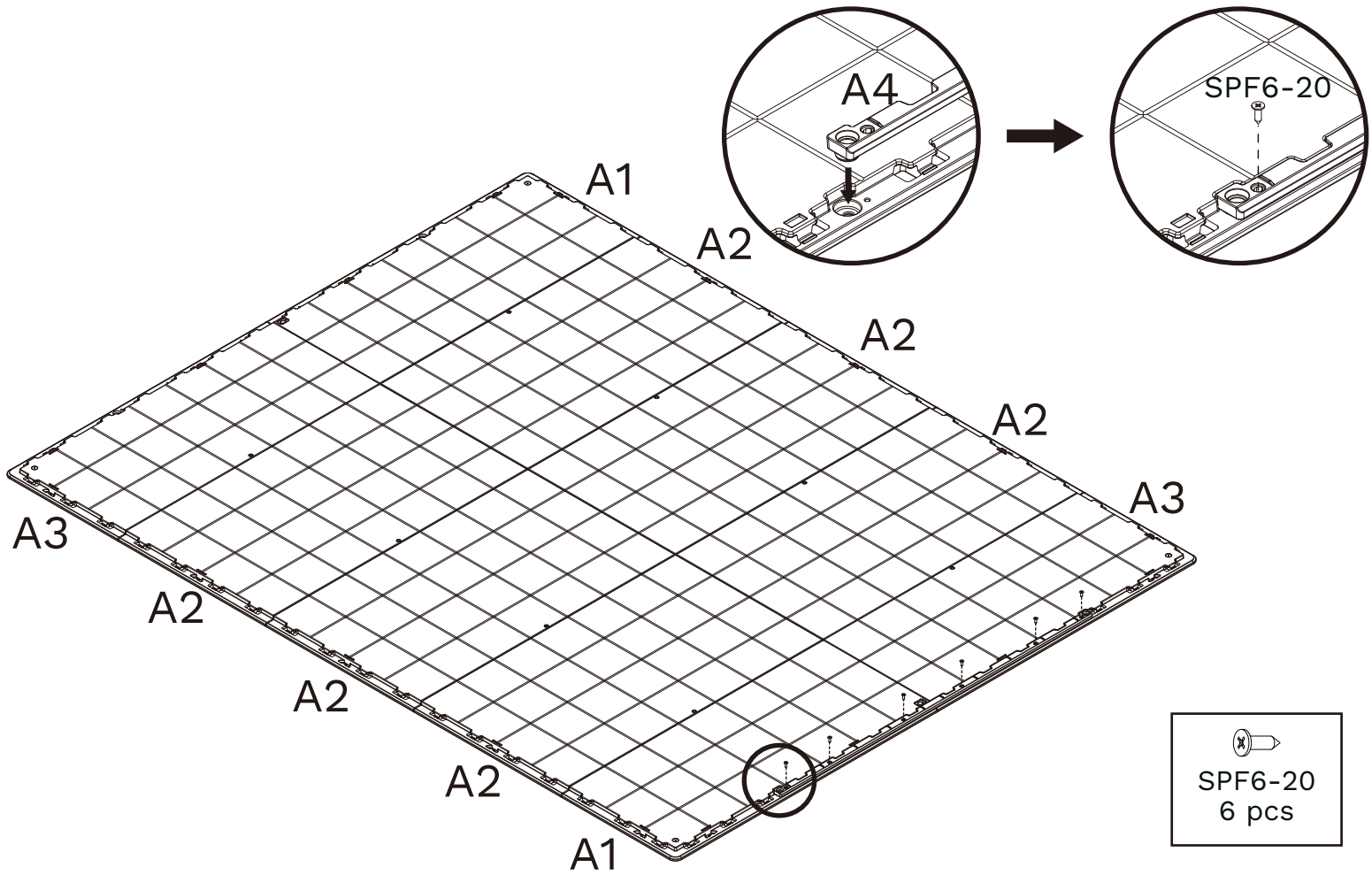
STEP 9



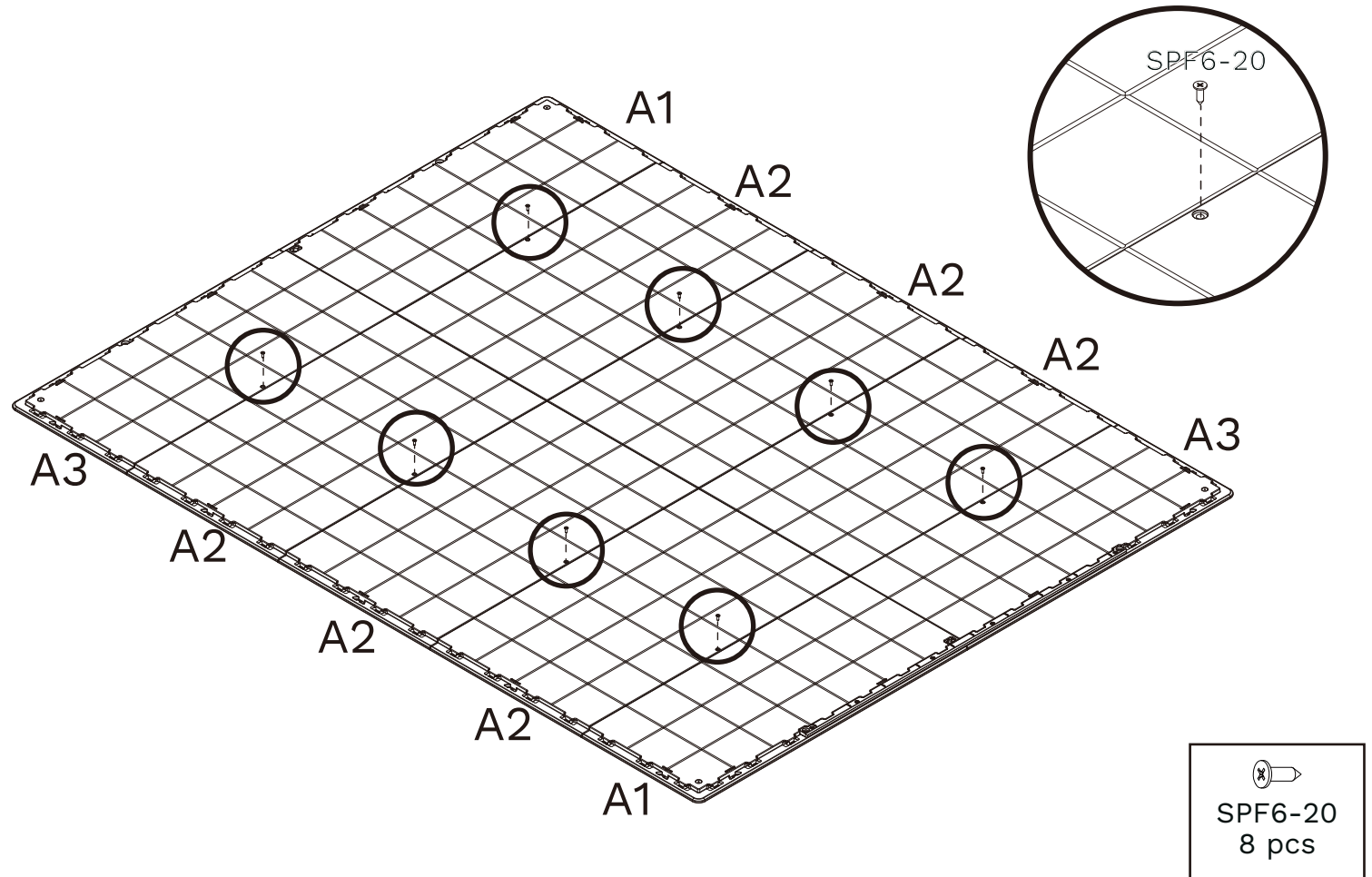
STEP 10



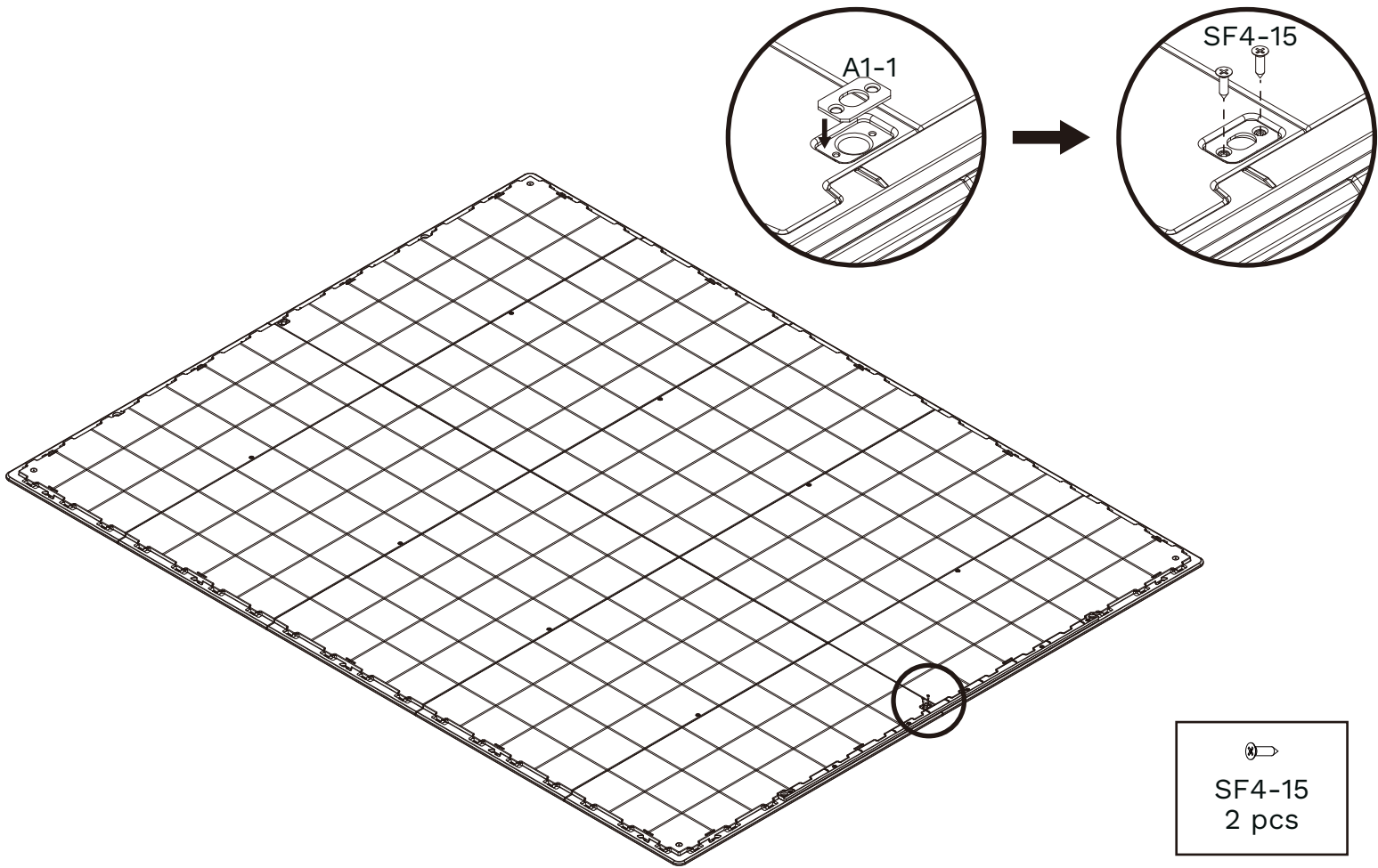
STEP 11



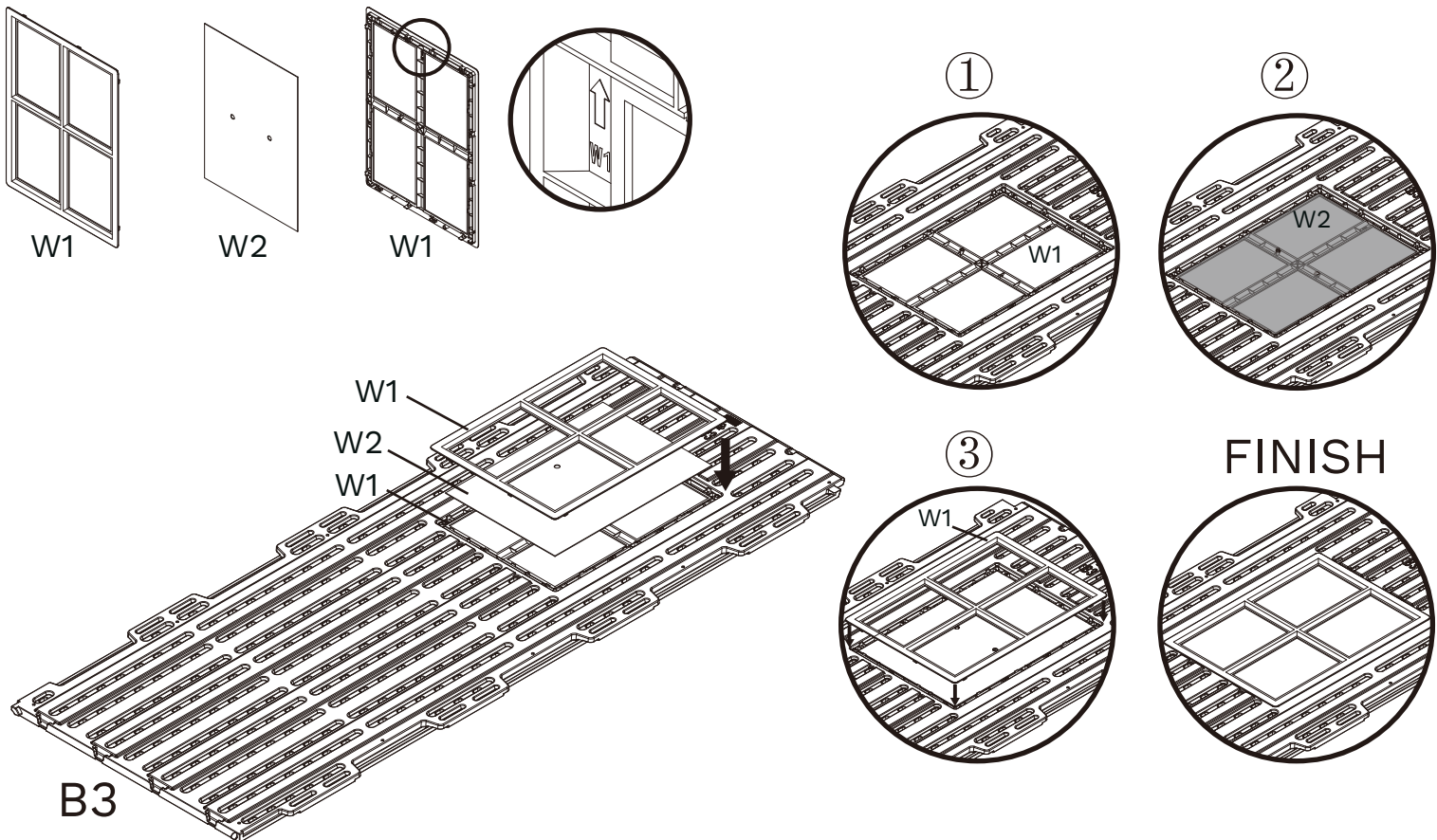
STEP 12



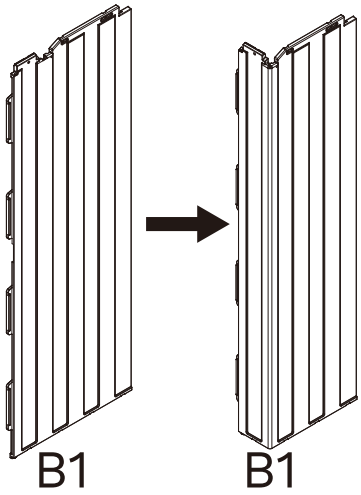
STEP 13



STEP 14



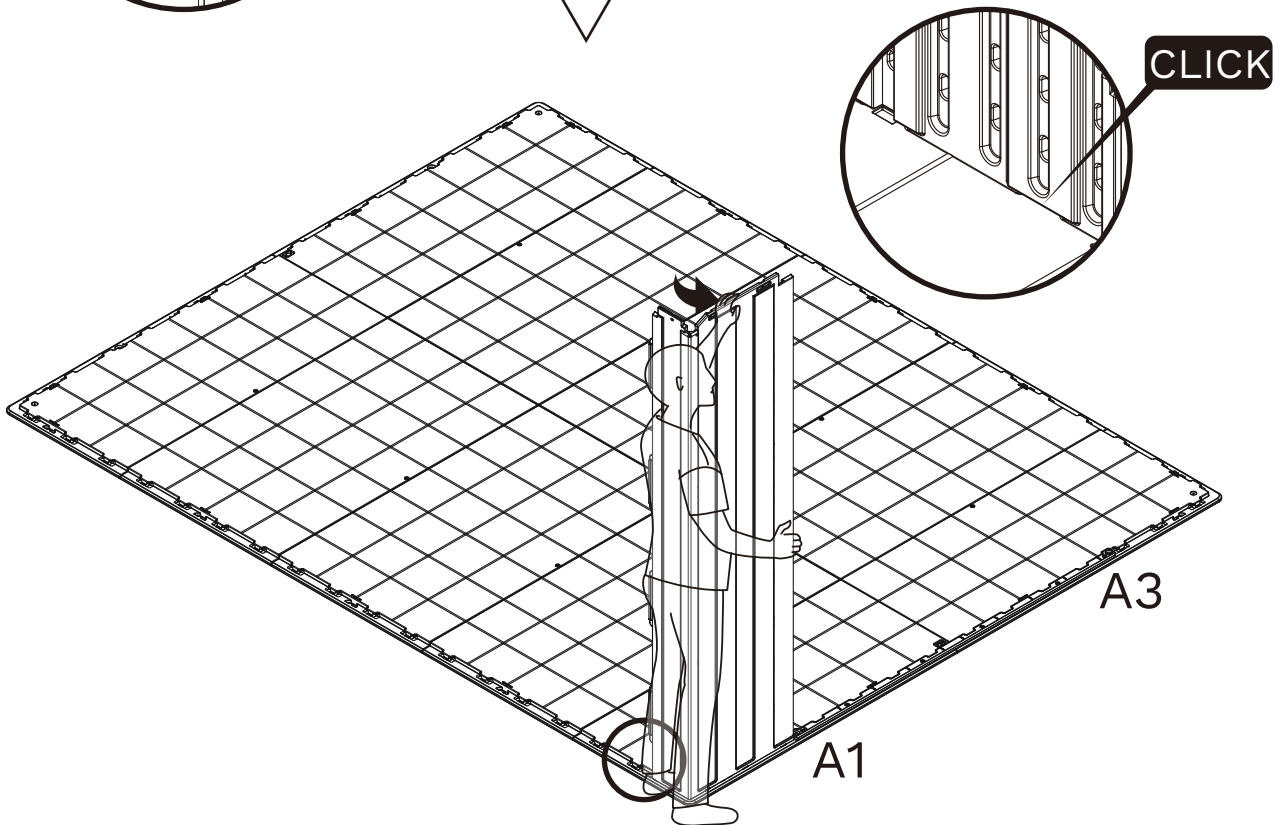
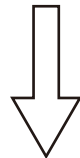
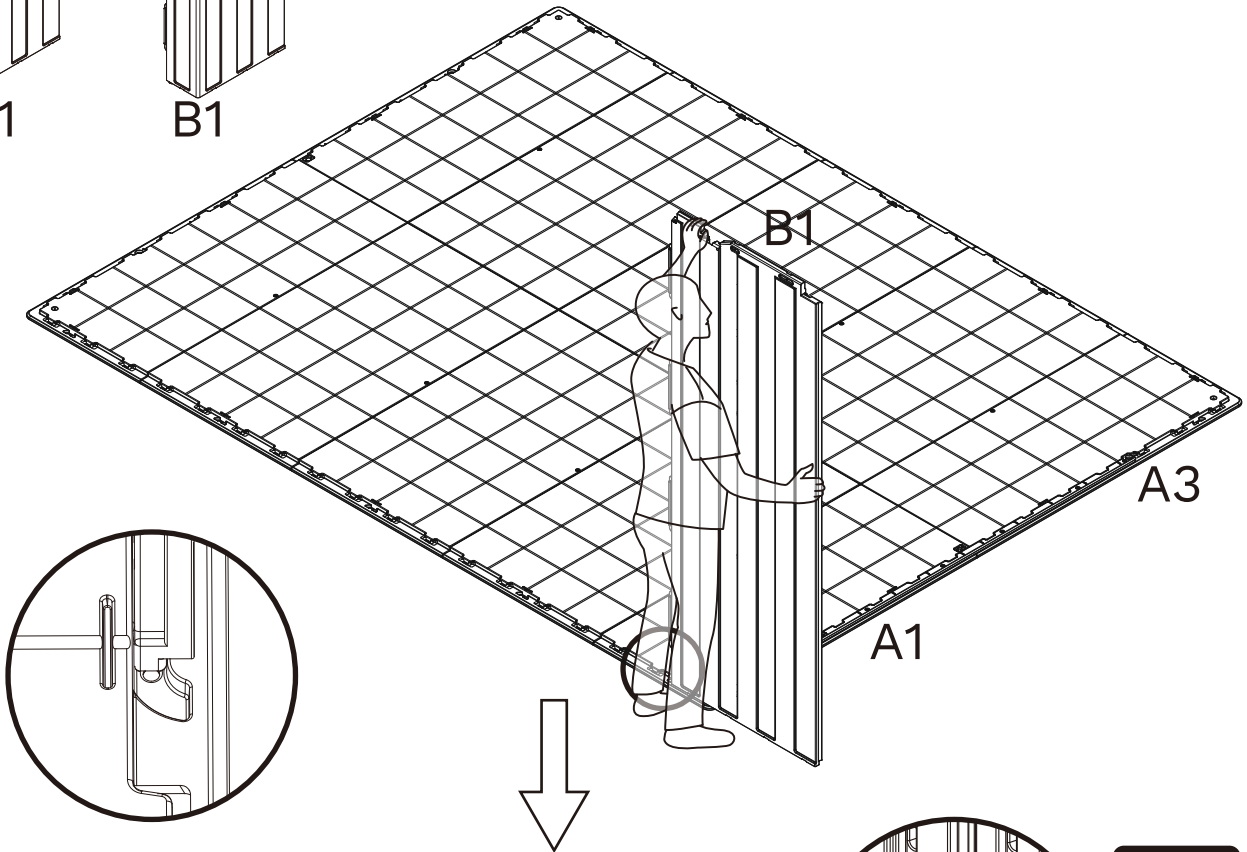
STEP 15



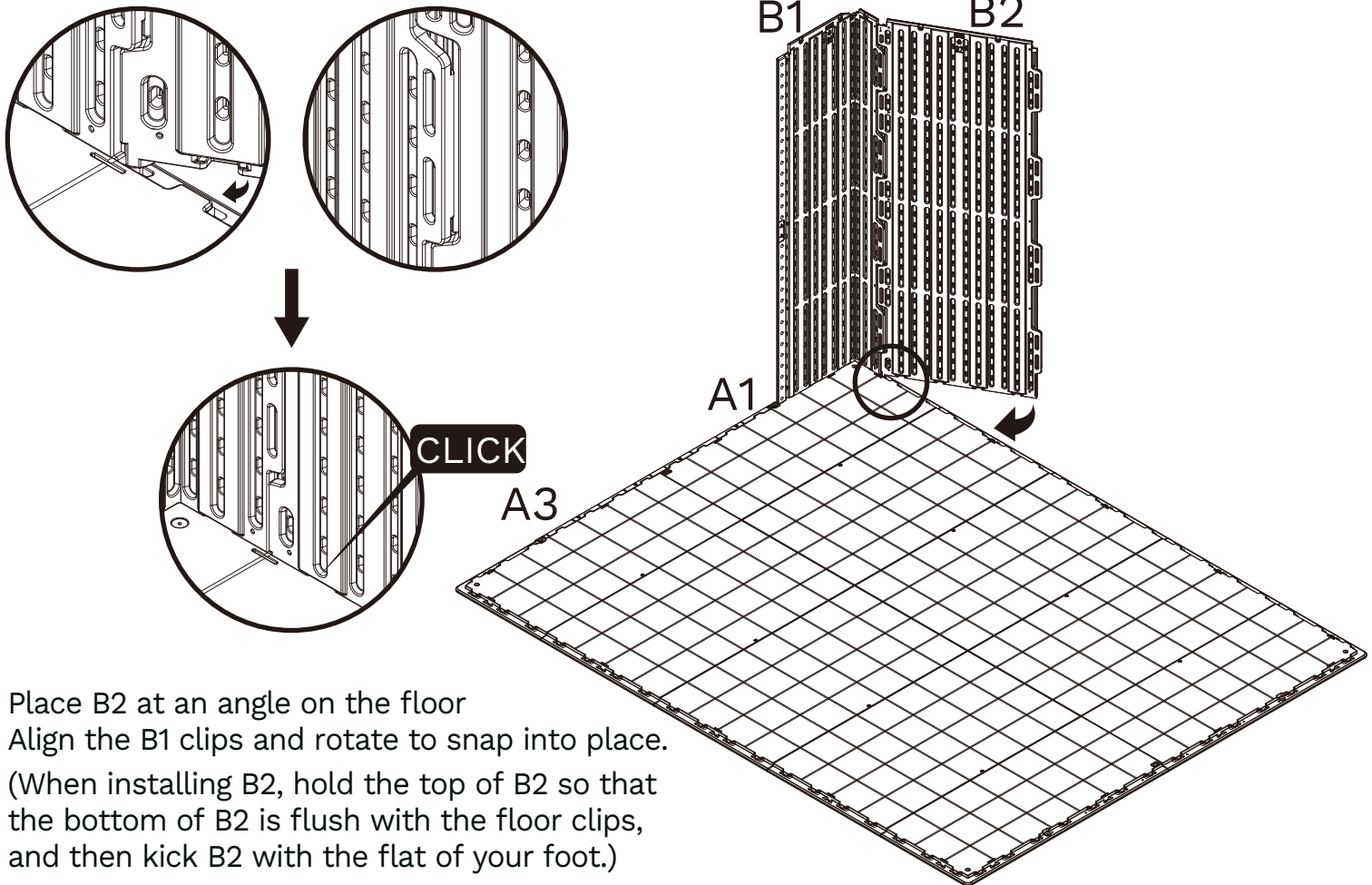
Before installation, please watch the video. Please follow the installation details in the video to avoid product damage.

First pre-fold B1, B1 placed in a U-shaped groove on the floor, bend 90 degrees after alignment.

(When installing B1, press on the top of B1 so that the clips below B1 are flush with the floor clips. You can use your foot to kick B1 flat.)

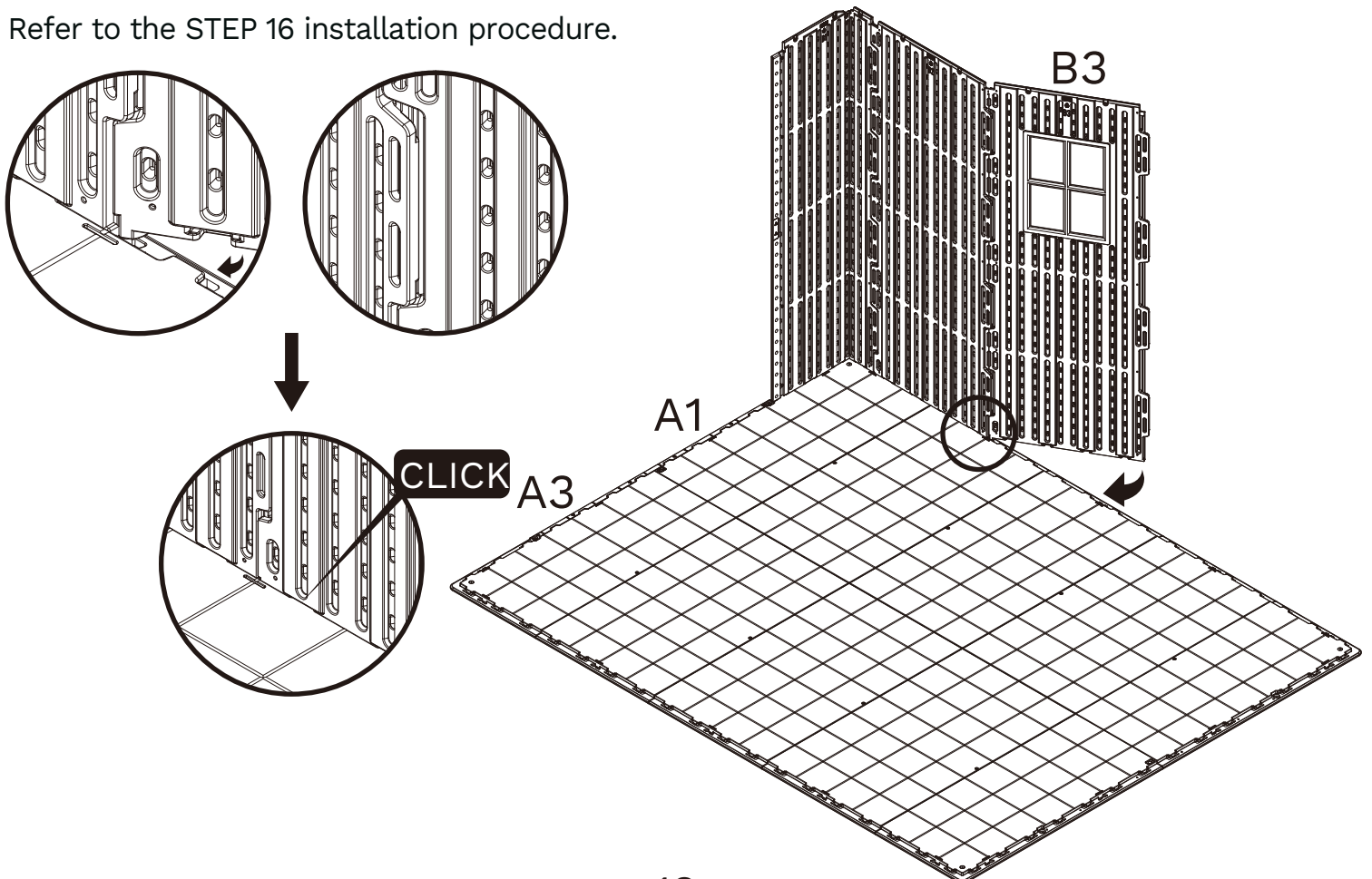


STEP 16

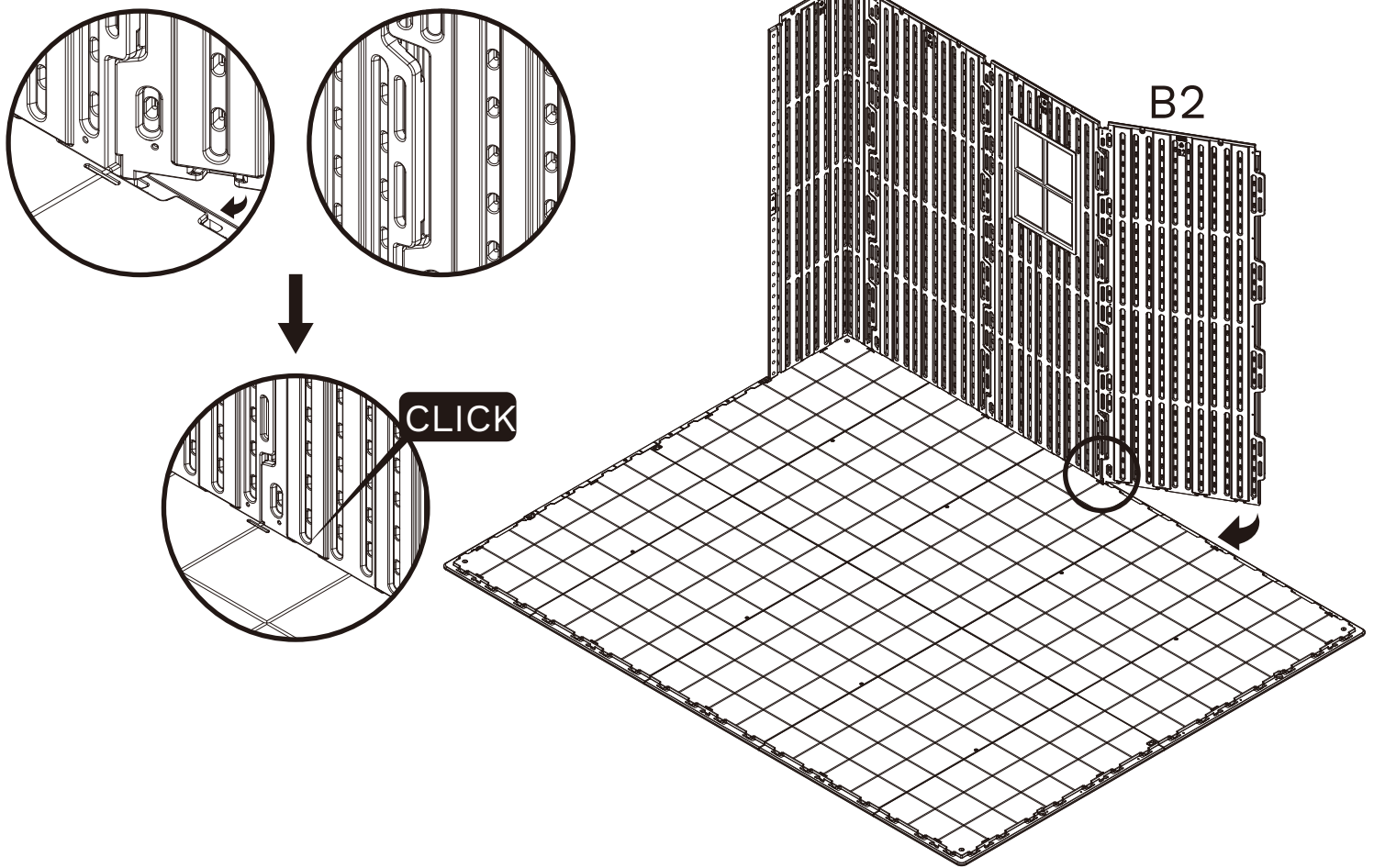


STEP 17

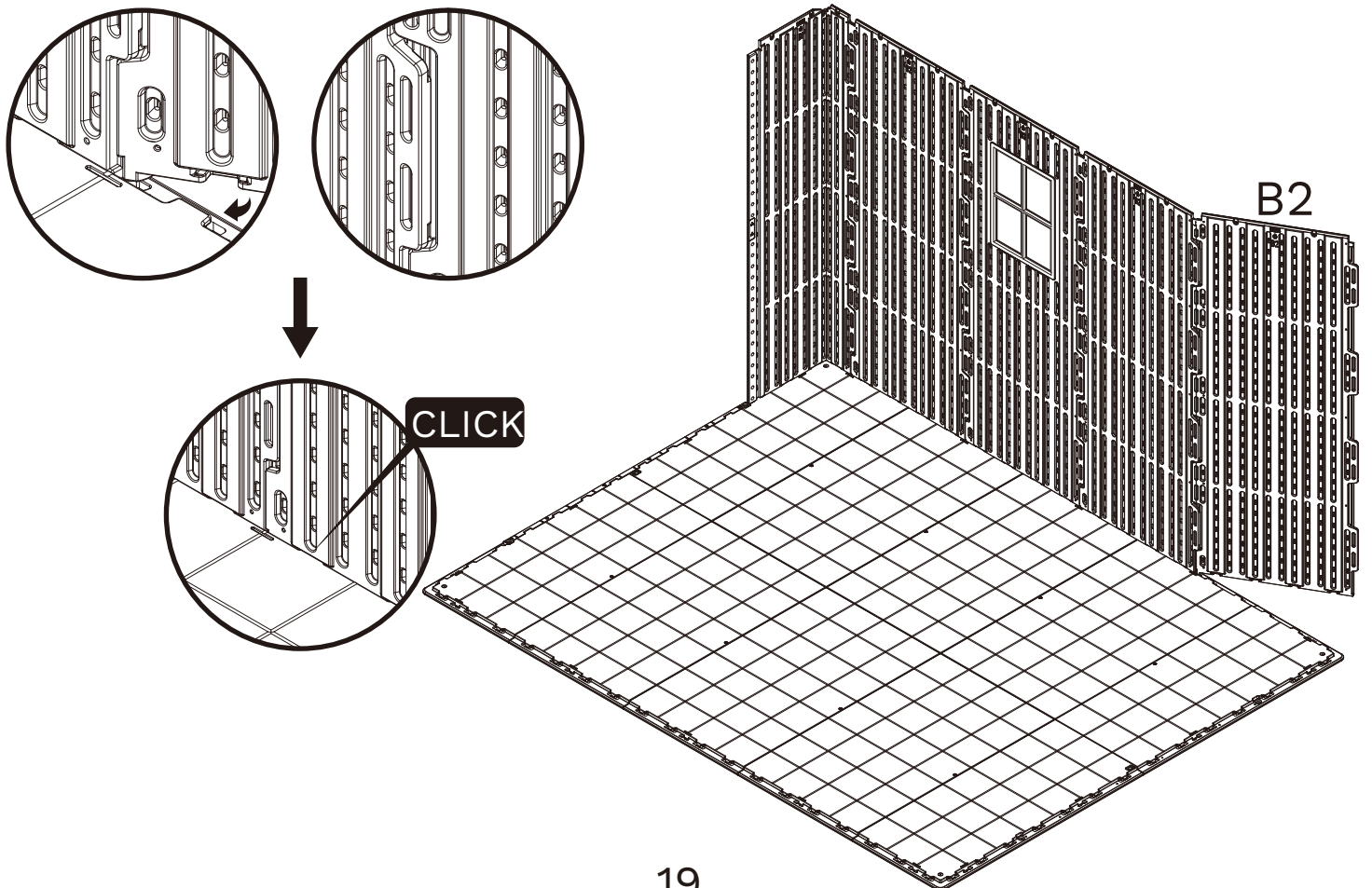
Refer to the STEP 16 installation procedure.



STEP 18



STEP 19



STEP 20

