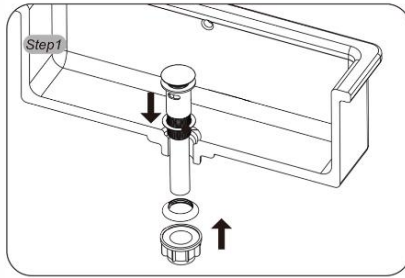
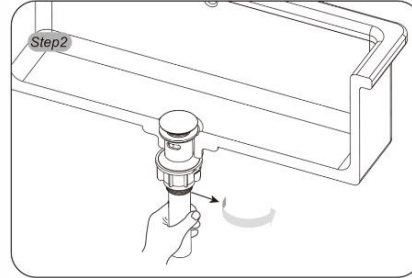


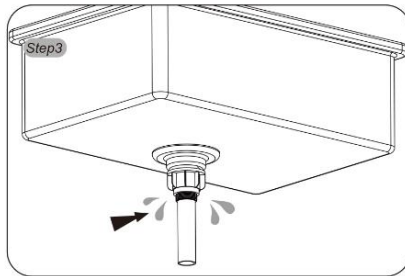
INSTALLATION



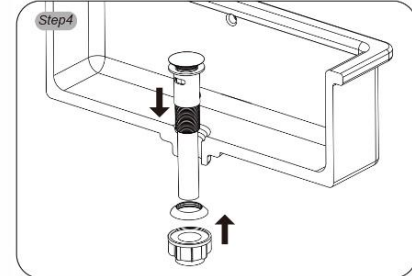
Disassemble the part and insert the drain pipe into the holes of the basin sink. Please ensure the small gasket is above the hole, then put and onto the drain pipe.



Tighten the fastened nut by hand.



Check whether leakage happened here under the basin sink; You need to apply some silicone to prevent leakage issues. If there is leakage under the basin sink, follow step 4 to use the silicone and complete installation;



At this step, a small gasket is not needed. Please follow the step 2 and step 3 to complete the installation.

