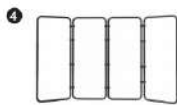
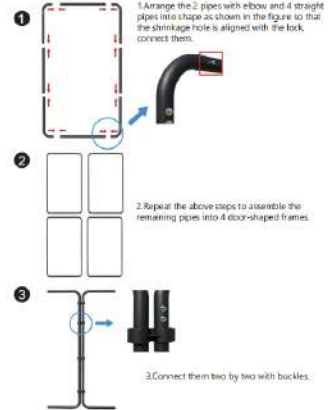


8x13 FT Green Screen Background Support



Installation Notes:



4. Connect remaining parts and get the shape as shown in the figure.



5. Take out the green screen and attach to the frame.



6. After the green screen is installed, lift it up and adjust it to a suitable shape.



Warning:

1. It is recommended to lift up the entire background after the ground installation is completed.
2. Please fold it when moving the background to avoid toppling over.
3. Do not pull the buckle violently to avoid scratching the tube body.
4. If the green screen is dirty, it can be cleaned with neutral detergent. Do not mix with dark colored fabrics which may cause staining.



Made in China

Pipe Material:	Steel	Buckle Material:	Plastic
Height:	8FT	Net Weight:	20.7 Lbs.
Green Screen Material:	Polyester	Pipe Diameter:	1 Inch
Width:	13FT		

材质：128G双铜双面单黑印刷，2折页