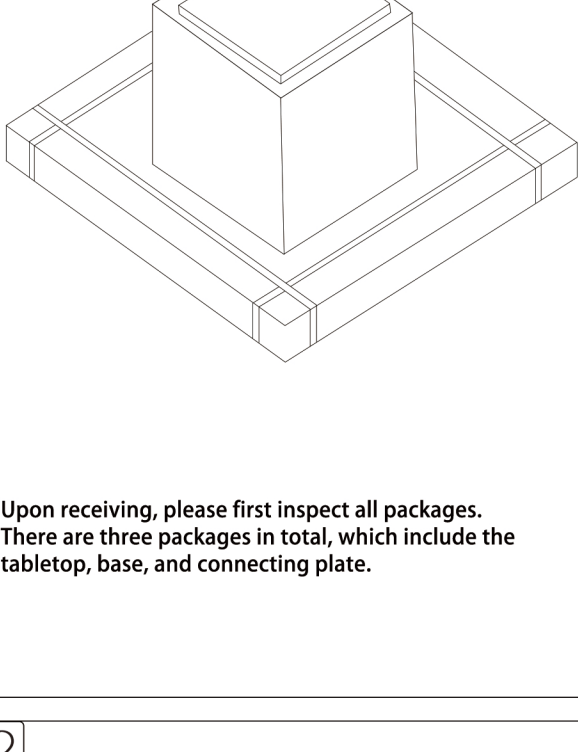
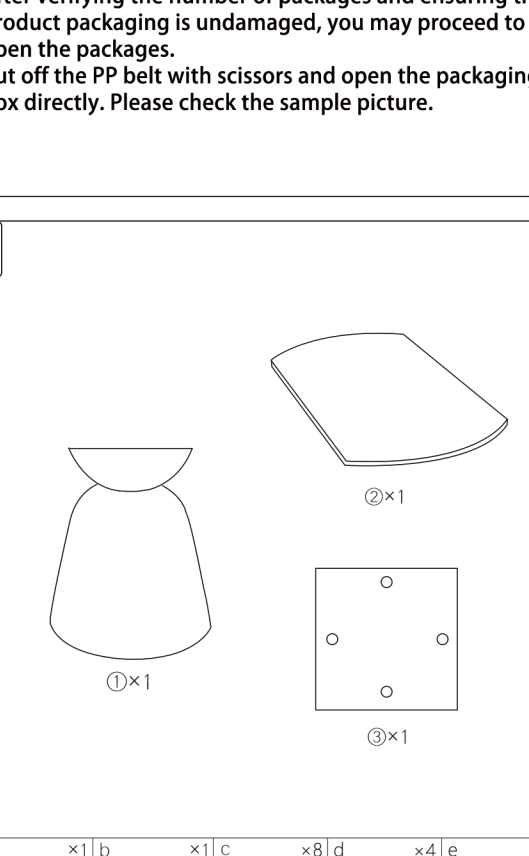


1



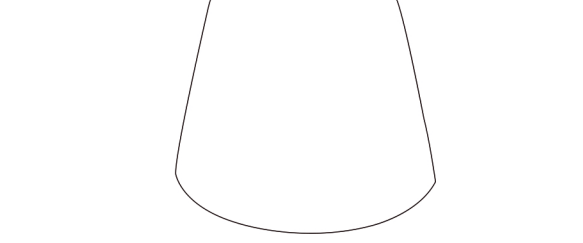
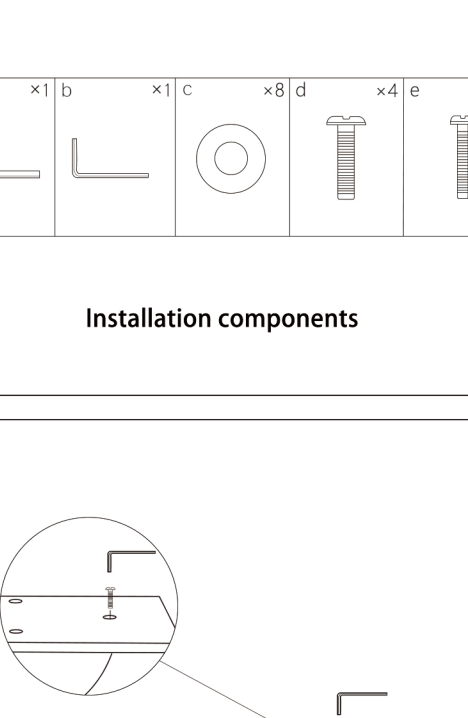
Upon receiving, please first inspect all packages. There are three packages in total, which include the tabletop, base, and connecting plate.

2



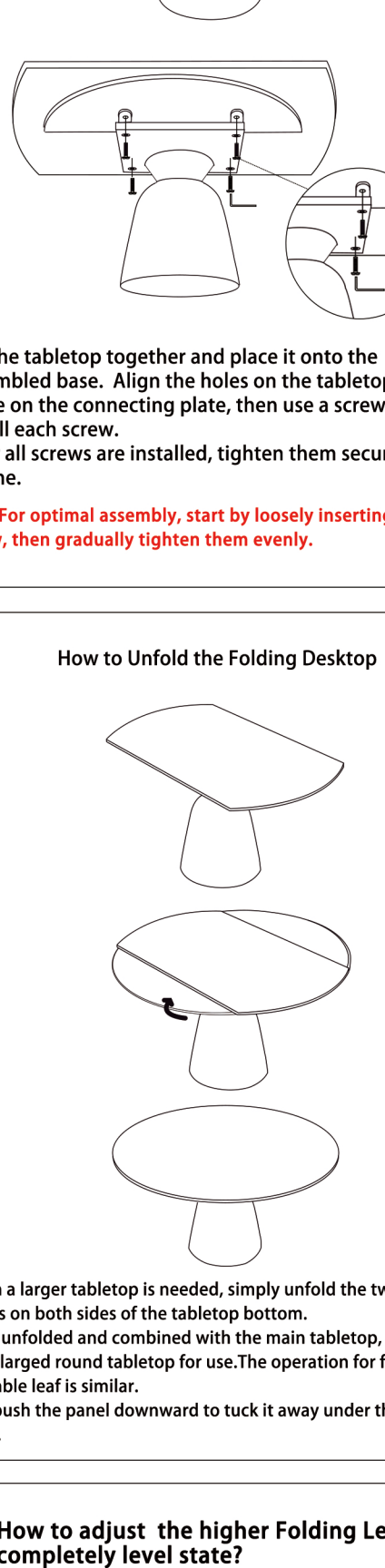
After verifying the number of packages and ensuring the product packaging is undamaged, you may proceed to open the packages. Cut off the PP belt with scissors and open the packaging box directly. Please check the sample picture.

3



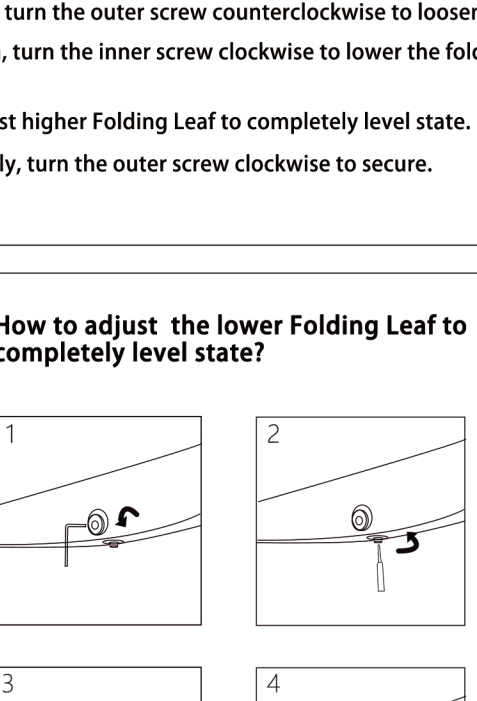
Installation components

4



First, place the connecting plate on the base. Then, install the connecting plate and base with screws according to the corresponding holes in the diagram.

5



Lift the tabletop together and place it onto the assembled base. Align the holes on the tabletop with those on the connecting plate, then use a screwdriver to install each screw.

After all screws are installed, tighten them securely one by one.

Tips: For optimal assembly, start by loosely inserting each screw, then gradually tighten them evenly.

6

How to Unfold the Folding Desktop



When a larger tabletop is needed, simply unfold the two hidden leaves on both sides of the tabletop bottom. Once unfolded and combined with the main tabletop, you'll have an enlarged round tabletop for use. The operation for folding up the table leaf is similar. Just push the panel downward to tuck it away under the dining table.

7

How to adjust the higher Folding Leaf to completely level state?

First, turn the outer screw counterclockwise to loosen. Then, turn the inner screw clockwise to lower the folding leaf.

Adjust higher Folding Leaf to completely level state.

Finally, turn the outer screw clockwise to secure.

8

How to adjust the lower Folding Leaf to completely level state?

First, turn the outer screw counterclockwise to loosen. Then, turn the inner screw clockwise to lower the folding leaf.

Adjust higher Folding Leaf to completely level state.

Finally, turn the outer screw clockwise to secure.

<https://www.wayfair.com/dining-tables/pdp/orren-ellis-round-and-rectangle-sintered-stone-extendable-dining-tables-for-6-8-w113822451.html>

9

Dining table load capacity