

Bathroom Vessel Sink

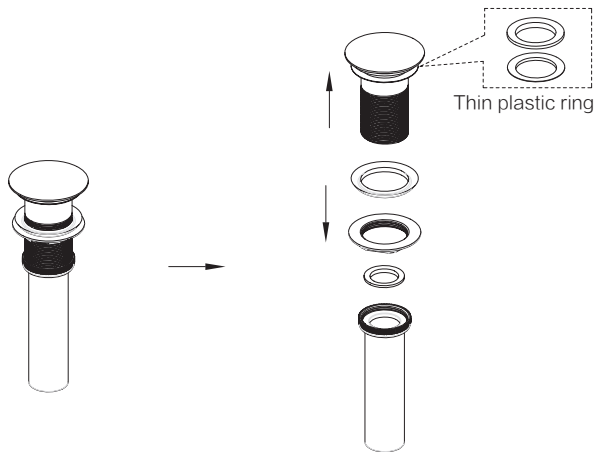


Package list

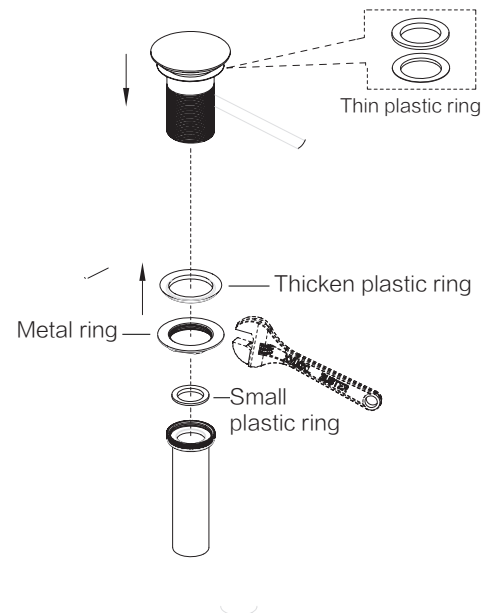
		
x1	x1	x1
		
		
x1	x1	x1
		
x1		

Basin&Faucet Installing

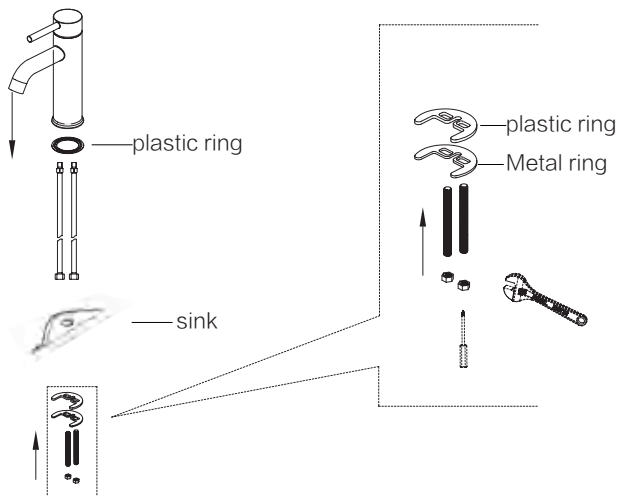
step1



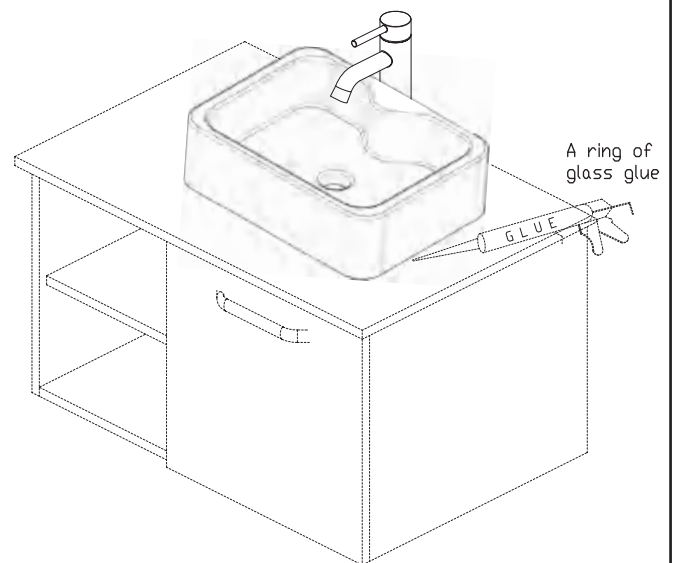
step2



step3



step4



Tip&Warnings

Don't over-tighten the water lines. It could damage the faucet. Certain dimensions of your vanity must be exact. The diameter of the tapping hole needs to be 1 3/8 in. The gap between the tapping hole and the drain hole needs to be 10 3/4 in.