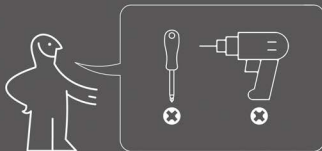


PRODUCT INSTALLATION INSTRUCTIONS



Before installing the product,
please read the product installation instructions carefully

Tools Required:



Installation by two people



To avoid furniture damage, please assemble on a soft-padded surface.



Contact us if you encounter any issues





				
X70	X70	X20	X20	X60
				
X5	X10	X8	X1	X10
				
X1	X16	X4	X2	
				
X1				X1

Note: accessories have surplus is normal phenomenon

How to use round fasteners and silver connectors



Suggestion: please read the installation drawing carefully before installing the product

Part 1: storage cabinet drawers



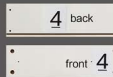
X3



X4

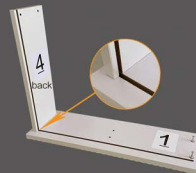
Step. 01

Screw the cam bolt into the plastic expansion nut



Step. 02

Install the 4# panel



X2

Step. 03

First, insert Panel 2# into the groove, and then secure it with the cam lock nut



X1



X2

Step. 04

Install the 5# panel





Step. 05

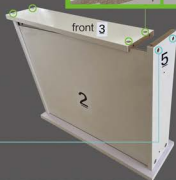
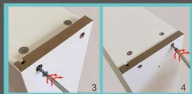
Install the 3# panel

X4

X4

3 back

3 front

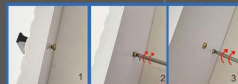
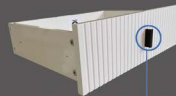


Step. 06

Install the knob

X1

X2



Part 2: vanity drawers



X2



X4

Step. 07

Screw the cam bolt into the plastic expansion nut

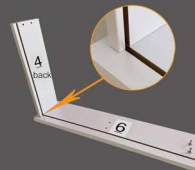


4 back

front 4

Step. 08

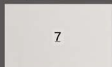
Install the 4# panel





Step.09

X2



X1

First, insert Panel 7# into the groove, and then secure it with the cam lock nut



X2

Step. 10

Install the 5# panel

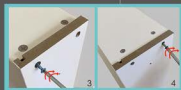
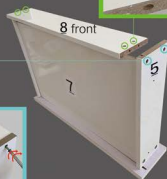
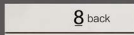


X4

X4

Step. 11

Install the 8# panel



X1

X2

Step. 12

Install the knob





X10

Step. 13 You need to disassemble the slide rail before installation



Single section slides

X10

X20

Step. 14 Attach single-section slides to plates 4 and 5 with 0.47 in screws



Step. 15



X3



X2

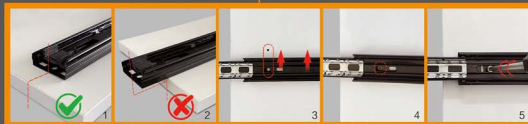
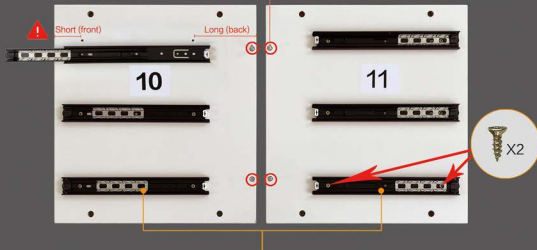
All drawers installed!

Part 3: storage cabinet



Step. 16

Install the slide rail onto the 10# and 11# panel using screws,
Screw the cam bolt into the plastic expansion nut



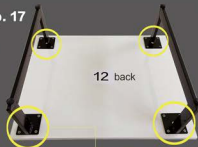
Installation of each slide requires two 0.47 in screws. This step requires the installation of 6 slides, a total of twelve 0.47 in screw.



Step. 17



Install two short metal legs

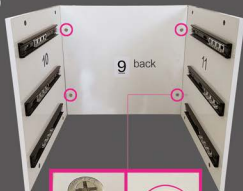


Step. 18

Screw the cam bolt into the plastic expansion nut



Step. 19

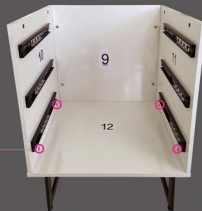


Install the 9#, 10# board and the 11# panel together.



Step. 20

Assemble the cabinet.





Step. 21

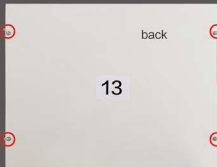
X4



13 back



13 front



back

13



Screw the cam bolt into the plastic expansion nut



X4

Step. 22

Install panel #13



9



front

9

12



1

2



X1

Step. 23

Install drawer #1



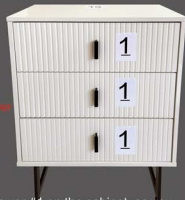
1



X2

Step. 24

Refer to the last page for information on drawer adjustment methods (Drawer Installation Issues and Solutions).



1

1

1

Install the remaining drawer #1 on the cabinet, as you did with the drawer in the previous step. The locker installation is complete!

Part 4:
Desk section



X1 X1

Install the charging station on the long metal legs.

Step. 25

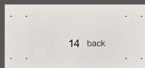


X4 X1

Step. 26 Install the long metal legs on panel #14



14 front



14 back



The front side of board 14# facing upward

Option 1: storage cabinet on the right

Option 2: storage cabinet on the left



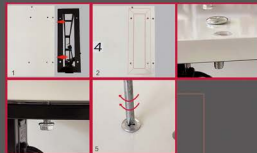
14 front



14 front

The storage cabinet can be installed on the left or right side of the vanity,
and you can choose option one or two according to your actual needs

Example: storage cabinet on the left



14 front



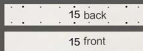
Step. 27 Screw the cam bolt into the plastic expansion nut

X9



Step. 28

Install panel #15



X2

X4

Step. 29

16

Short (front)

Long (back)



16



X2

Install the slides on the two panel #16



X4

Step. 30

Install panel #16





Step. 31

17 back

front

Install the slides on both the front and back of panel #17.



Note: Both the front and back sides of the 17th board need to be installed with slide rails.



Step. 32

Install panel #17



Step. 33

Screw the cam bolt into the plastic expansion nut

18 front

18 back



Step. 34



X6



Install panel #18.





X1

Step. 35

Install drawer #6.



X1

Step. 36

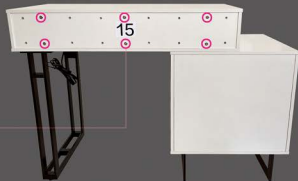


Following the steps for installing the drawer from the previous one, install the remaining #6 drawer on the left side of the vanity table



X6

Step. 37



Desk section installation completed !

Part 5: storage shelf

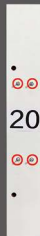


X8



Screw the cam bolt into
the plastic expansion nut

Step. 38



X4

Step. 39



X2

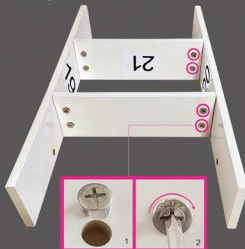
Install the two panel #21



X4

Step. 40

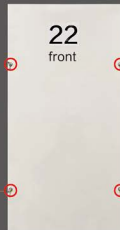
Install panel #20.



X4

Step. 41

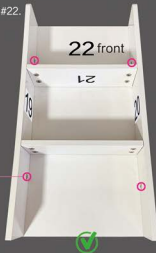
Screw the cam bolt into
the plastic expansion nut





X4

Step. 42 Install panel #22.



Step. 43



flips

Storage shelf
installation completed !



Part 6: makeup mirror



X4

Step. 44

Screw the cam bolt into
the plastic expansion nut



X4

Step. 45



Install panels #23 and #24 onto panel #25.



X8

26

X2

Step. 46 Insert the wooden dowel into the hole in panel #26



26

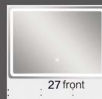


26

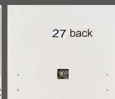


X4

Step. 47

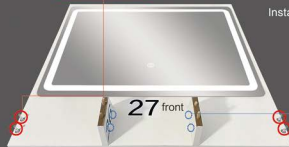


27 front



27 back

Install the two panel #26



X4

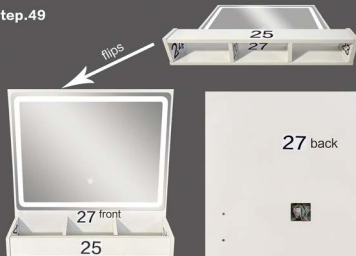
Step. 48 Install the two panel #25



25 front



Step. 49



The installation positions of the makeup mirror and storage shelf can be interchangeable.



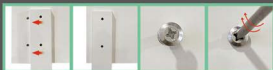
The makeup mirror is installed on the right



The makeup mirror is installed on the left



Step. 50



X8



X4

Install the four panel #28.

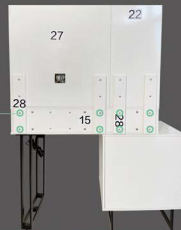


Step. 51

Install the panel #27 and #22.



X8



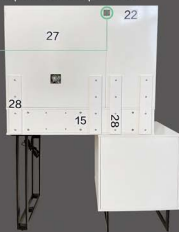
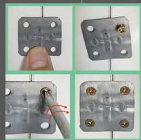
If the mounting holes on board 28# cannot align with those on board 15#, please loosen the screws on the top of board 28# first.



X1 X4

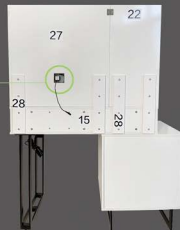
Step. 52

Connect panel #27 and panel #22



Step. 53

Check the wiring



X1

Step. 54

Install the power adapter



The vanity installation is complete !



When the cabinet is shaking, you can adjust the foot pad at the bottom of the cabinet legs to make it smooth



Problems with the installation of drawers and solutions 1:



1: Loosen the screws
fixing the slide rail

2: Move the slide
downward

3: Tighten the screws
clockwise

Problems with the installation of
drawers and solutions 2 :



1: Loosen the screws
securing the slide rail

2: Move the slide
upwards

3: Tighten the screws
clockwise

The left side of the drawer is adjusted as follows.:



1: Loosen the screws
securing the slide rail

2: Move the slide
downward

3: Tighten the screws
clockwise

The right side of the drawer is adjusted as follows:



1: Loosen the screws
securing the slide rail

2: Move the slide
upwards

3: Tighten the screws
clockwise

Friendly Reminder:

Gently touch "⊙" to adjust the light color, and long
press "⊙" to adjust the light brightness.

In the off mode, long press the switch button to turn off the power indicator light.