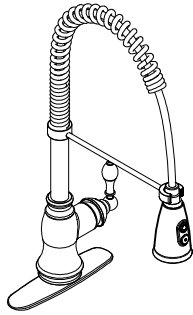


ULTRA FAUCETS



INSTRUCTION

Single Handle Kitchen Faucet With Spring Spout Model no: UF1220X

Tools:

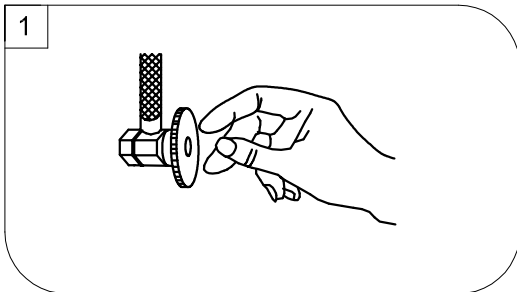
- Adjustable Wrench
- Pliers
- Pipe Wrench
- Screwdriver
- Teflon Tape



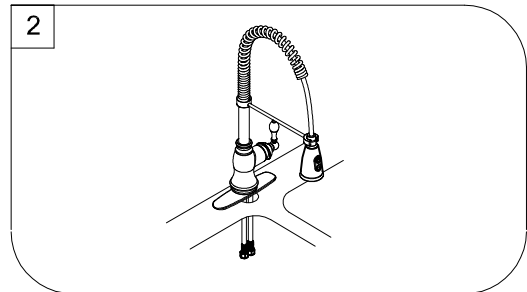
Maintenance:

Your new kitchen faucet is designed for years of trouble-free performance. Keep it looking new by cleaning it periodically with a soft cloth. Avoid abrasive cleaners, steel wool and harsh chemicals as these will dull the finish and void your warranty.

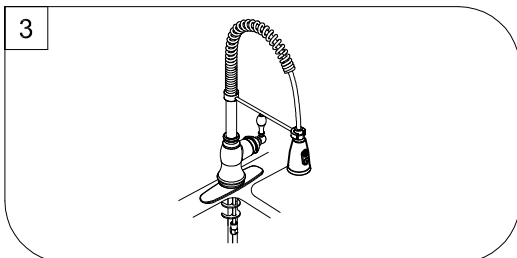
Preparation / Assembly



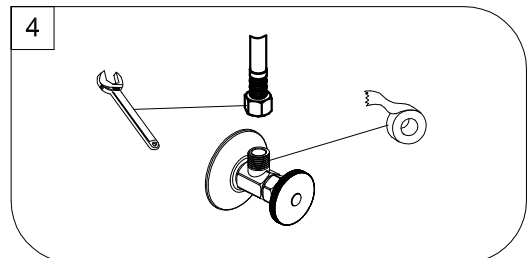
Shut off water supplies. Remove old faucet. Clean sink surface in preparation for new faucet.



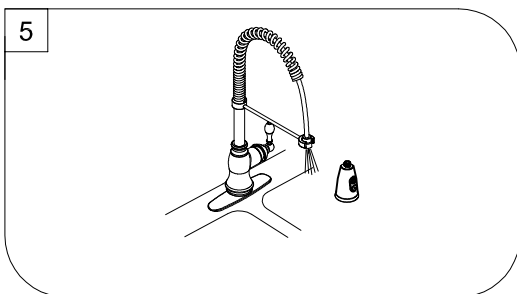
Screw the mounting stud into the body. Place Escutcheon on bottom of new faucet (Optional). Position Faucet through mounting hole.



Secure the faucet to sink by installing rubber washer, steel washer and nut onto the mounting stud. Tighten with wrench.

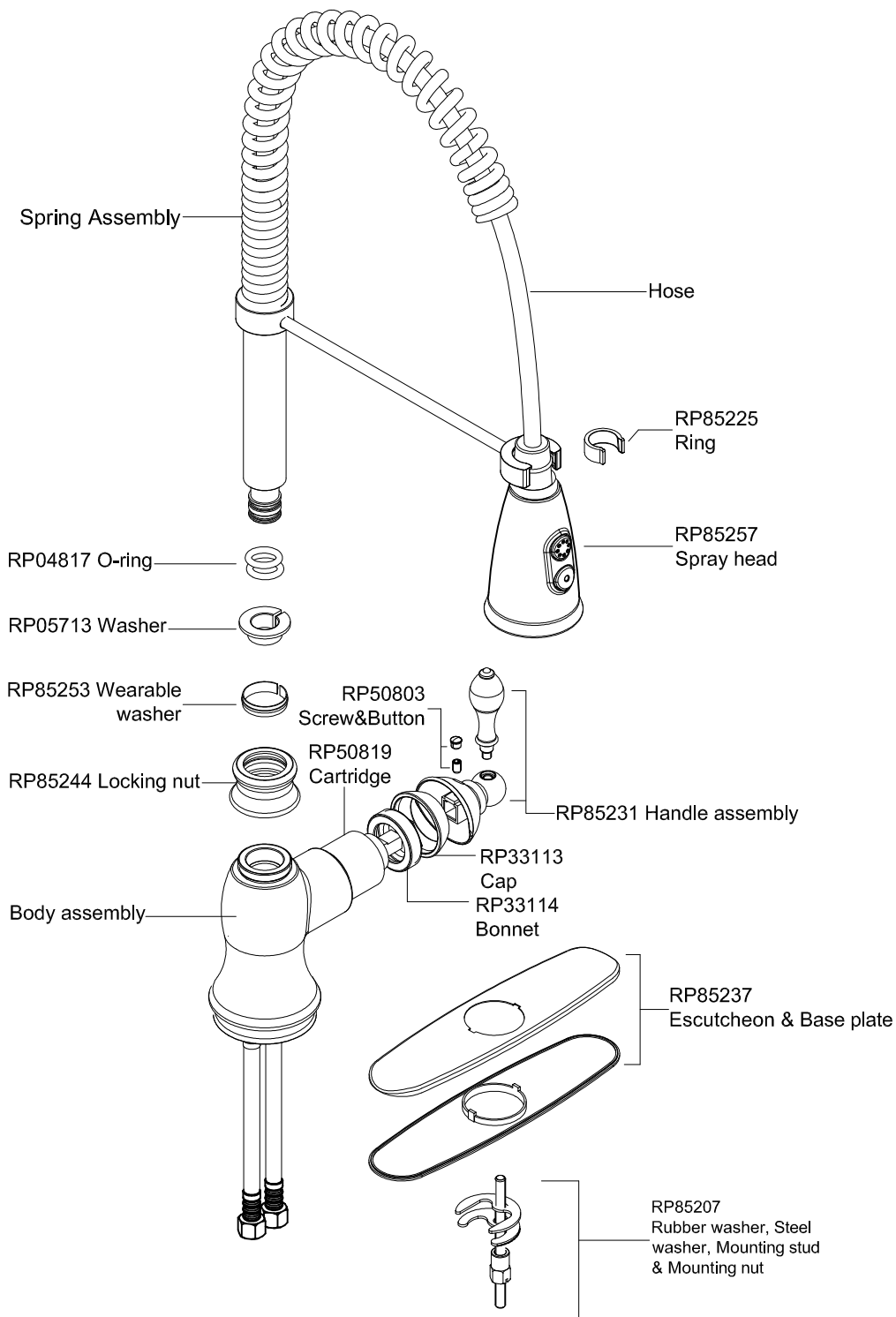


Apply pipe tape onto threads of water supplies. Use wrench when tightening the hose connection, do not overtighten.



Important: After installation is completed. Remove Spray head and turn faucet handle all the way on. Turn on hot and cold water supplies and flush water lines for one minute. Check all connections for leaks. Re-tighten if necessary, but do not overtighten. Reinstall Spray head. Your new faucet is now ready to use.

Exploded Drawing RP(Replacement Parts)



Limited Lifetime Warranty

Ultra Faucets warrants to the original purchaser that its products will be free from defects in workmanship and materials. All Ultra Faucets are provided with a life time limited warranty. This warranty does not cover any other labor or service charges associated with the removal, repair, or reinstallation of Ultra Faucets products. This express warranty does not apply to products that have been damaged as a result of misuse, abuse, negligence, accident, faulty installation or maintenance practices and/or used in any manner contrary to those recommended by the manufacturer.