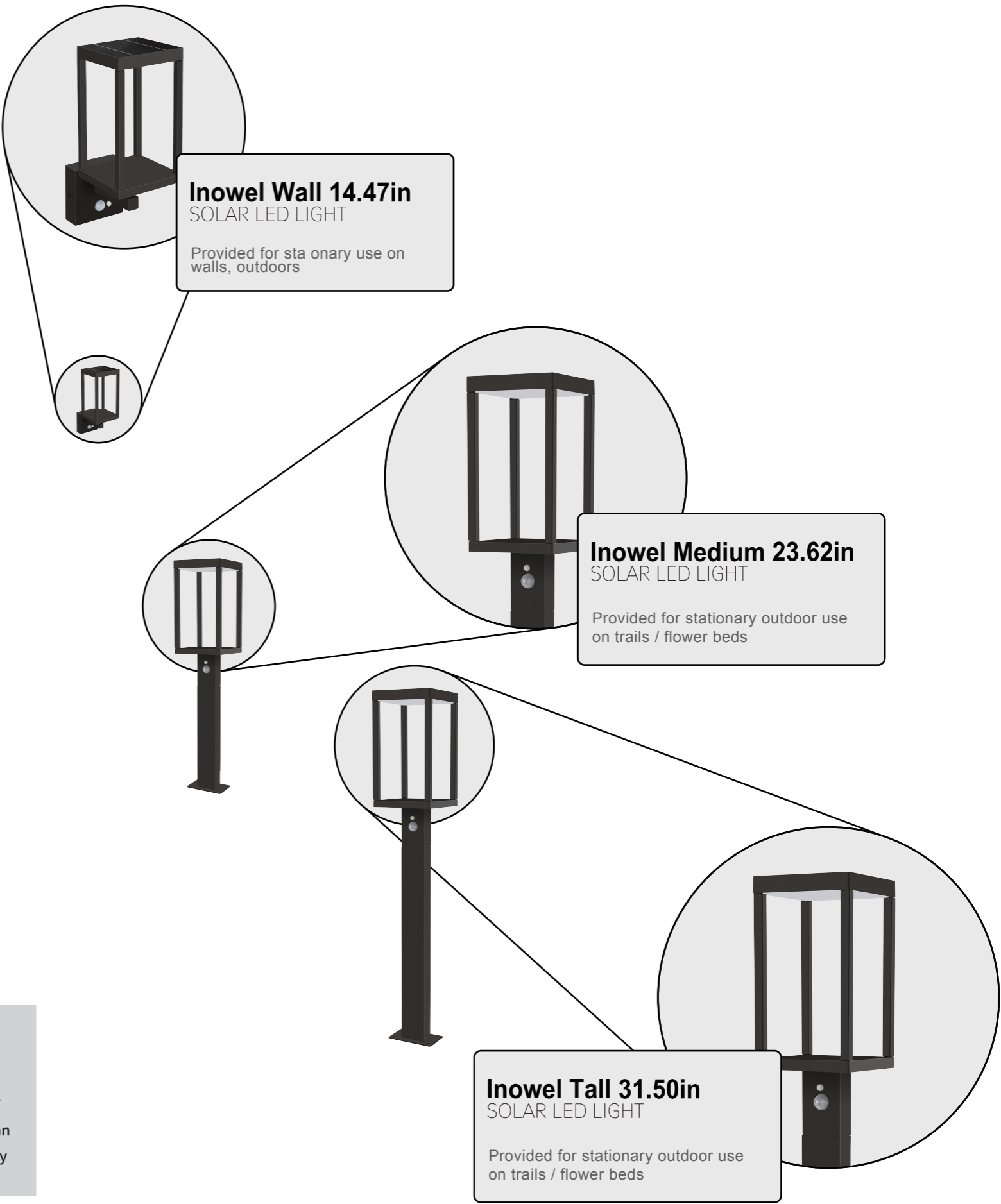





DESIGN FOR SIMPLE LIFE !
DESIGN FOR SIMPLE LIFE !
DESIGN FOR SIMPLE LIFE !





Inowel Lighting Inc
16803 Ventura Blvd
Suit #360, Encino
CA 91436
info@inowel.com
www.inowel.com

www.inowel.com/services



Scan the QR code and register
on our official website to get an
additional 12 months warranty

Inowel

Instructions

WARRANTY PERIOD AND CONDITIONS

We devote special attention to selecting high-quality materials and use manufacturing techniques that enable us to create designer and durable product ranges.

That is why we offer a 2-year warranty against product manufacturing defects for the LED component in this product.

The warranty covers product breakdowns and malfunctions under the condition that the product is used in accordance with its intended use and subject to installation and maintenance in accordance with good practice and the information contained in the user's manual.

This contractual warranty does not cover defects and damage caused by the natural wear of parts, bad weather, flooding, heat releases, freezing, damage caused by water quality(hardness, aggressiveness, corrosion, etc.) by the presence of foreign bodies transported by water otherwise(sand, filings, etc.)or the lack of room ventilation, and damages that could be the consequence of improper use, misuse, negligence, accident or maintenance that is defective or does not comply with good practice or the information in the user's manual.

The following are also excluded from the warranty: harmful consequences due to the use of accessories and/or non-original equipment manufacturer or improper replacement parts, disassembly or product modification.


SAFETY

These instructions are for your safety. Please read through them thoroughly prior to installation and retain them for future reference.

Always refer to the installation drawing for the orientation of the product.

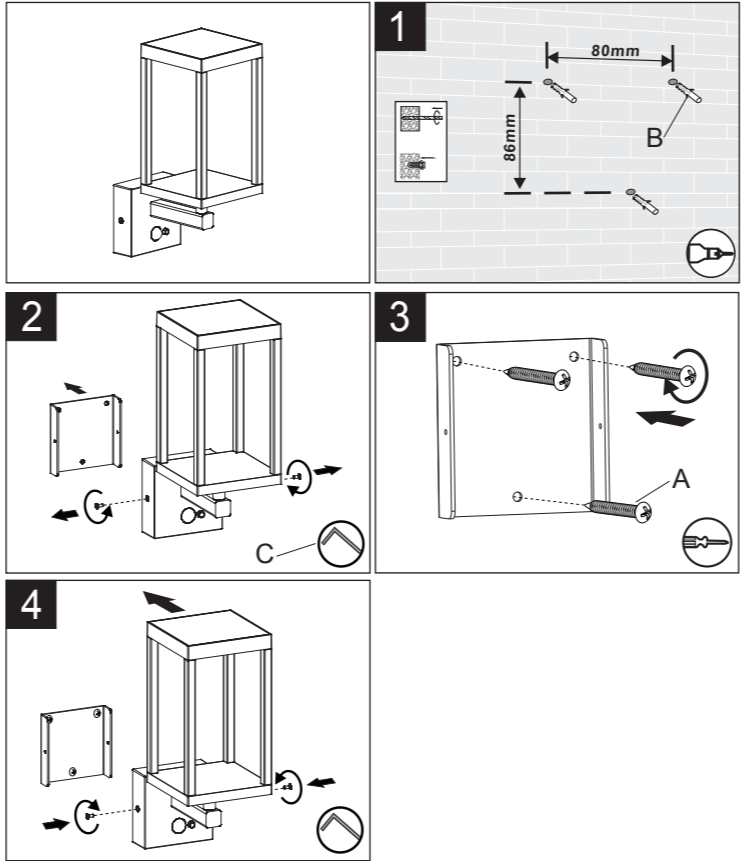
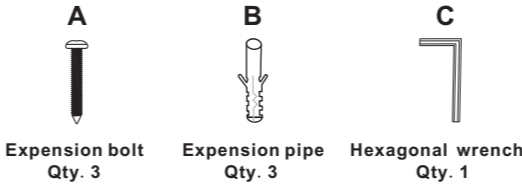
The operating time depends on the charging performance in daytime.This would be affected by environment e.g. weather condition and location.

TECHNICAL DATA

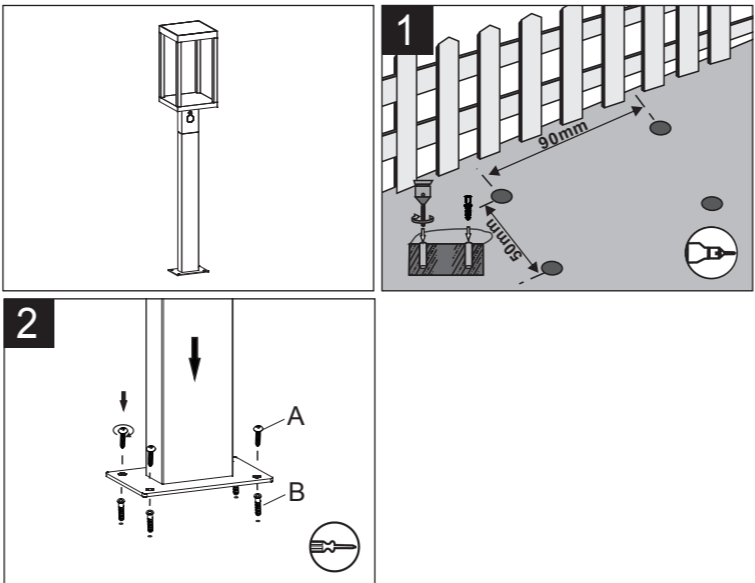
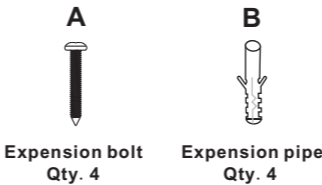
Bulb Type	The light source of this luminaire is not replaceable; when the light source reaches its end of life the whole luminaire shall be replaced.
CE	Conformity with all relevant CE Directive requirements.
IP54	Splash-proof and dust resistant.
	Waste electrical products should not be disposed of with household waste. Please recycle where facilities exist.Check with your Local Authority or local store for recycling advice.

Installation steps

22561



22562-x



Mode conversion

