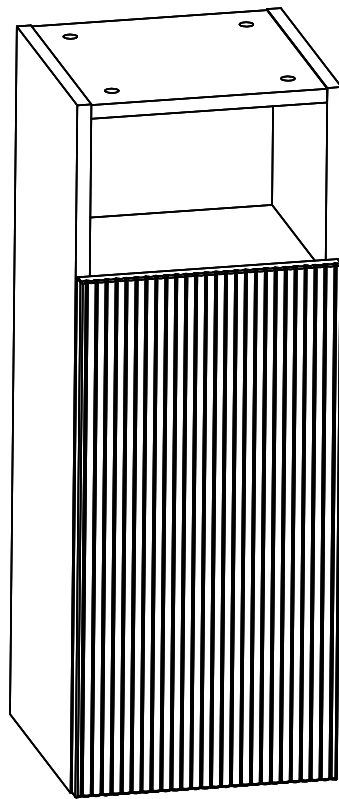


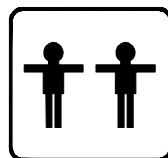
# Floating Side Cabinet Installation Guide



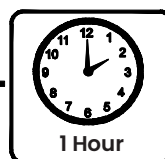
Thank you for selecting our quality product. Prior to assembly, carefully inspect all packing materials for any loose parts. Separate and count all components, comparing them to the parts list provided.

## Reminder

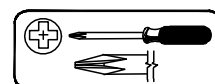
Refrain from tightening screws until assembly is complete. This ensures proper alignment and avoids any complications.



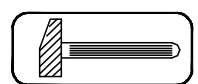
+



## Tools Required



(Not included)



(Not included)

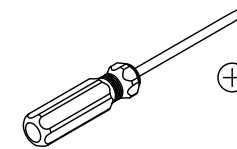
**IMPORTANT:**  
**PLEASE READ INSTRUCTIONS BEFORE STARTING THE ASSEMBLY.**

Thank you for choosing our products. Please review the installation manual carefully before assembly, following the step-by-step instructions for accessories and hardware. Our detailed guidance ensures a smooth assembly process.

Our products are environmentally friendly. To maintain their quality, avoid submerging them in water, placing heavy items on them, or applying excessive force. If you encounter any issues, please contact us for assistance.

We appreciate your purchase. Thank you.

# Tools



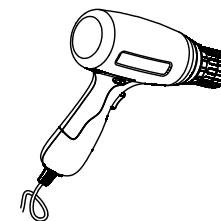
Screwdriver



Tapeline

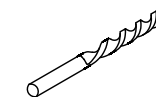


Pencil

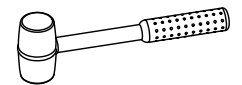


Electric drill

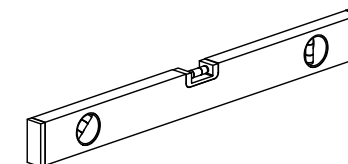
Ø0.31"



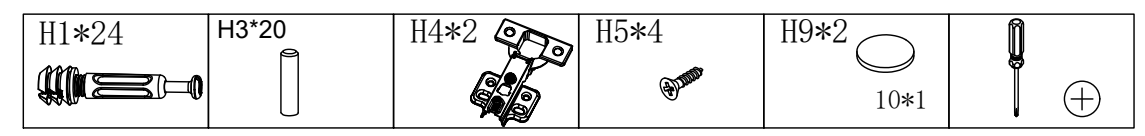
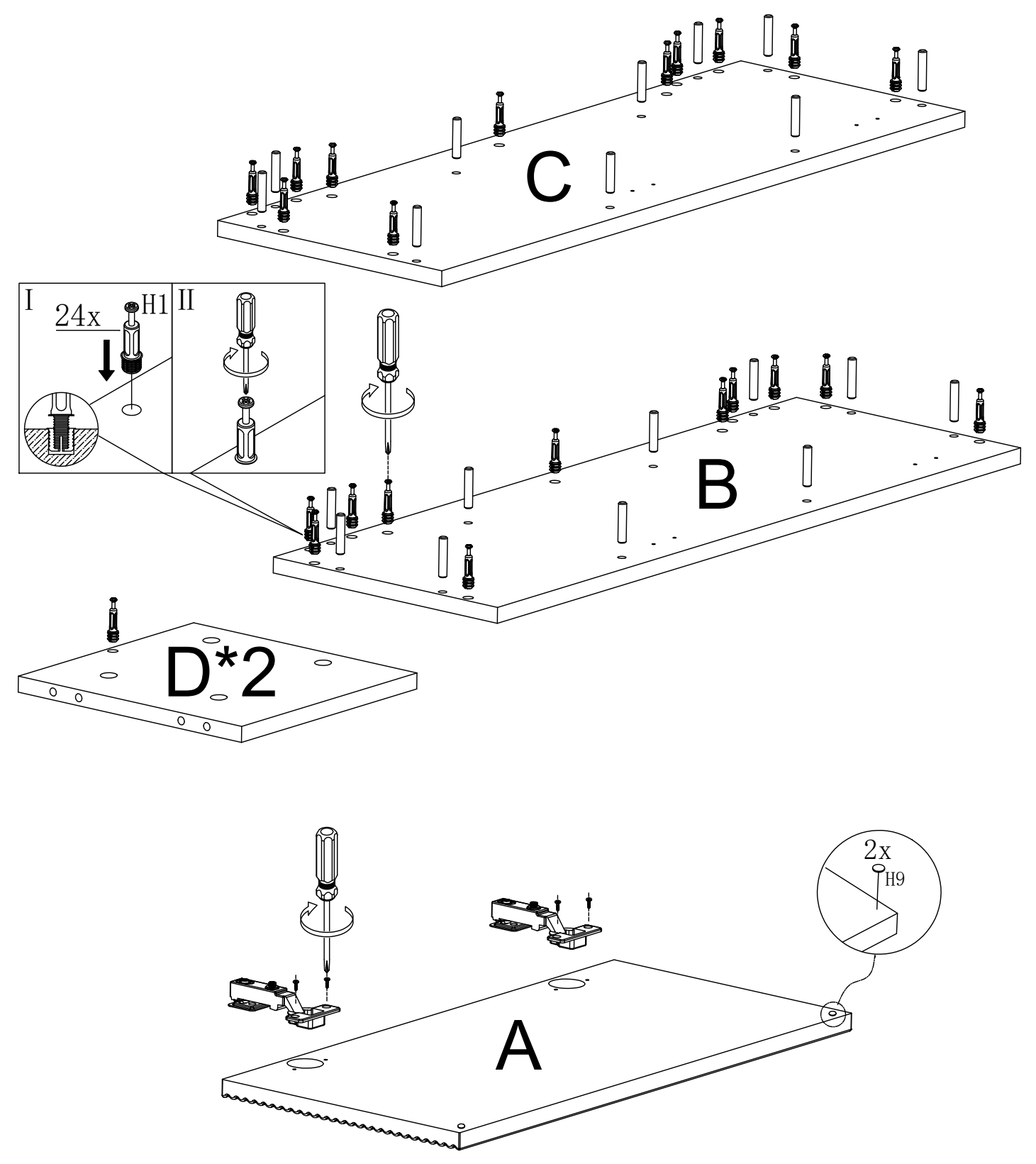
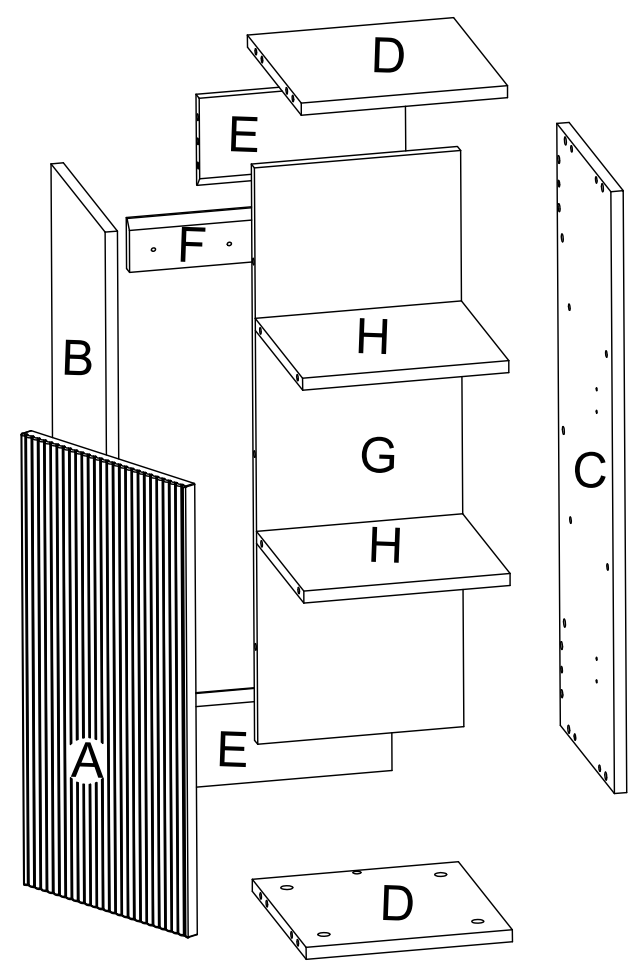
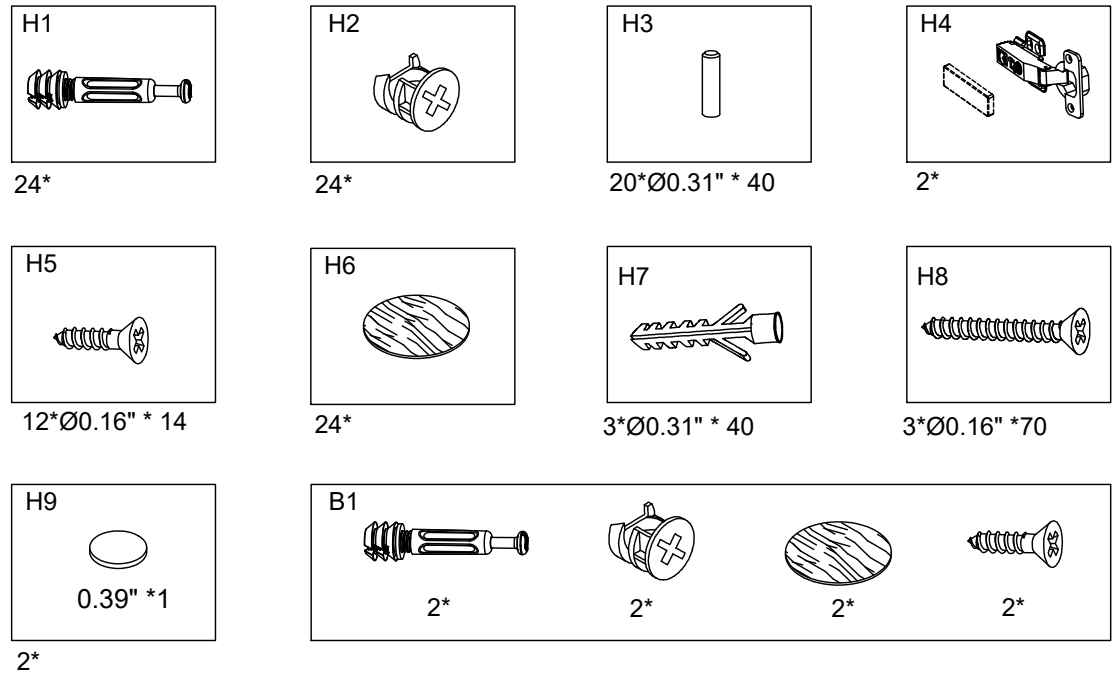
Drill bit

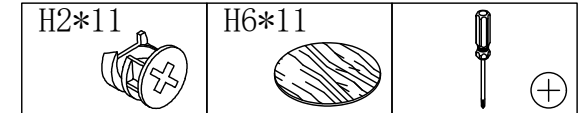
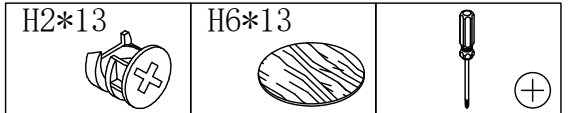
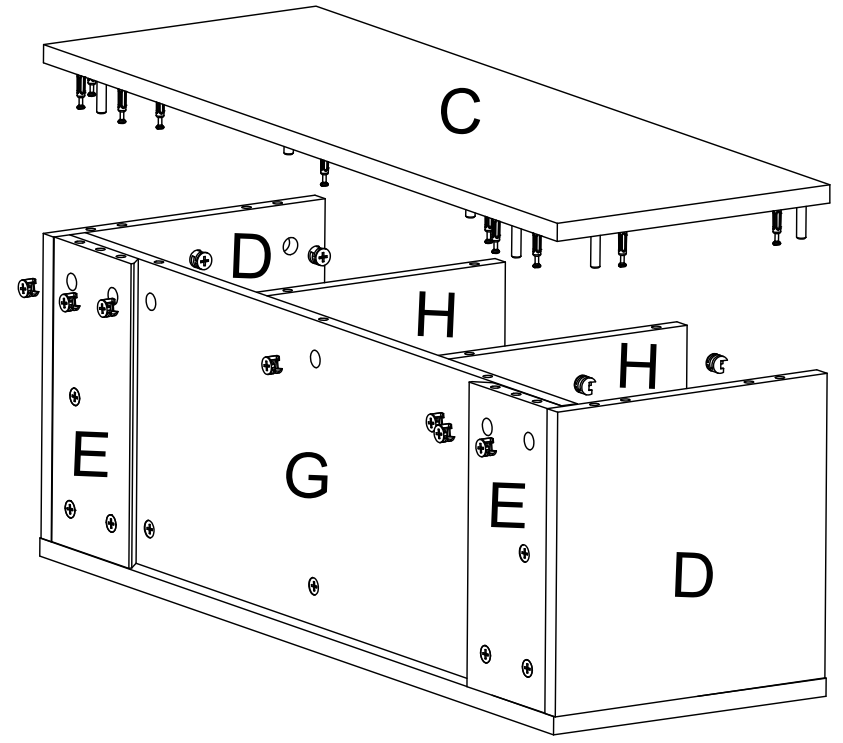
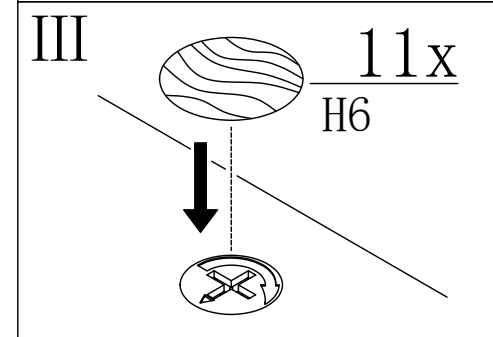
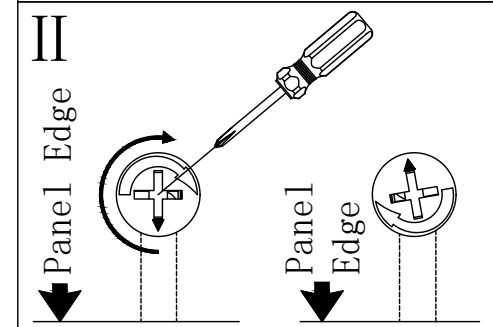
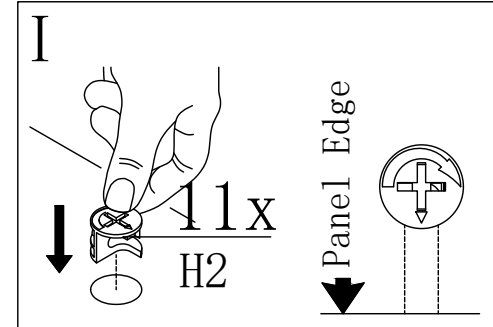
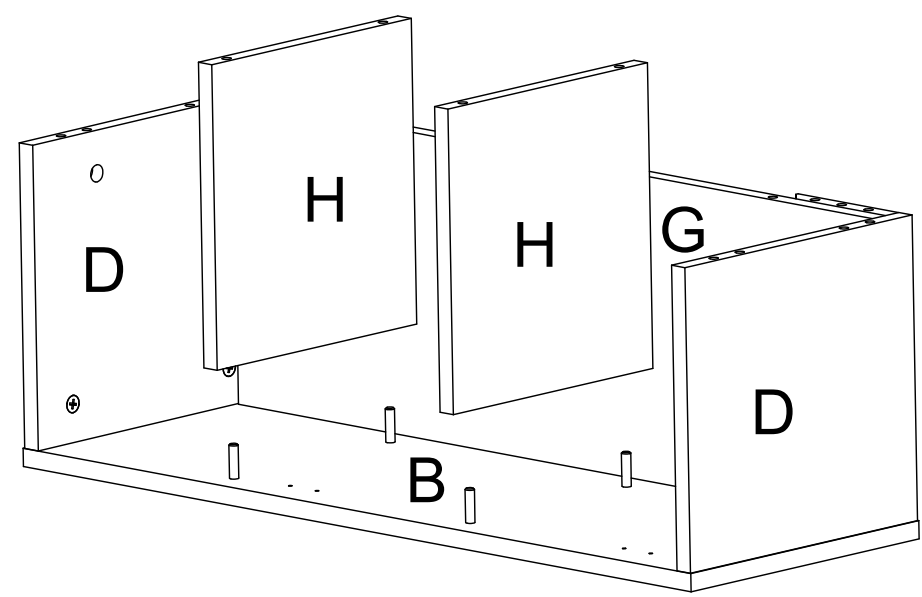
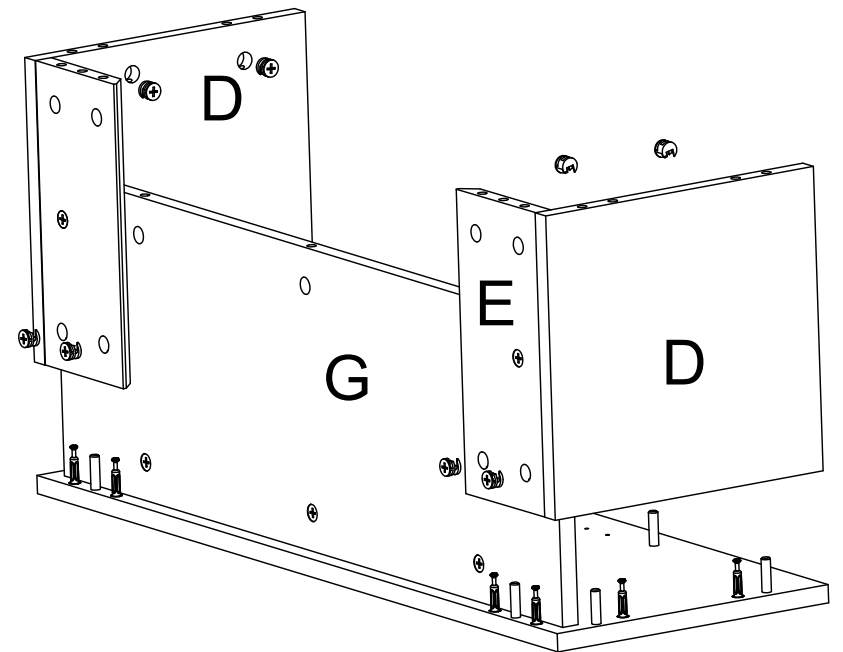
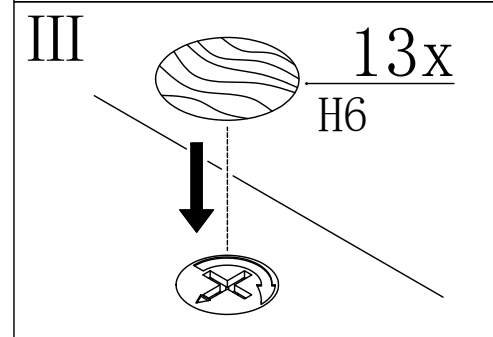
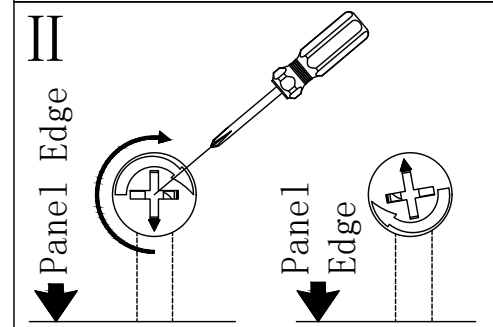
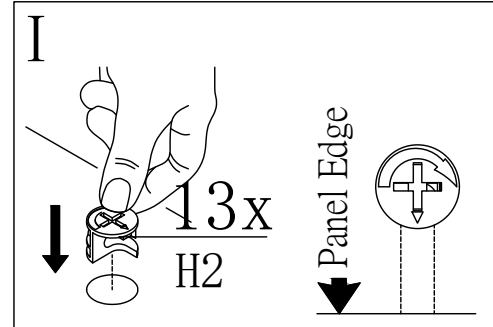
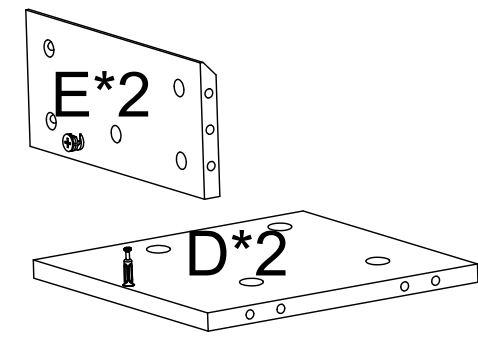
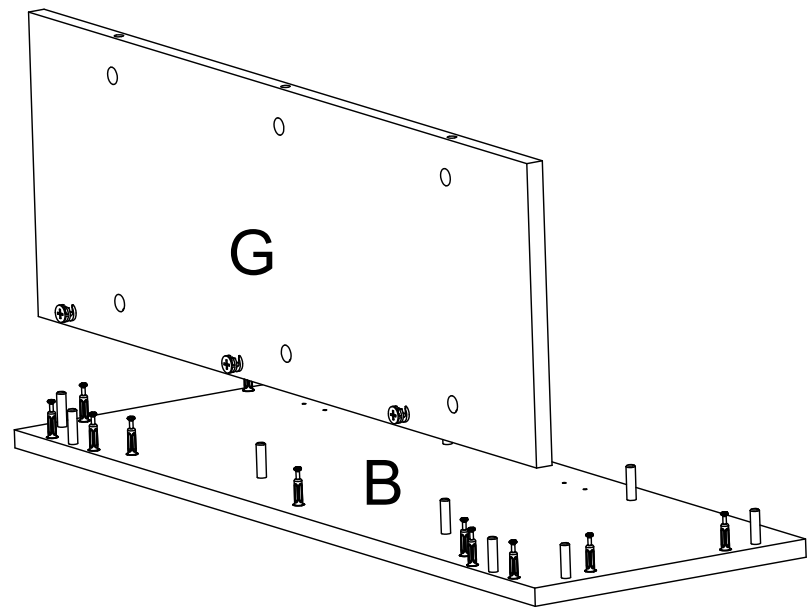


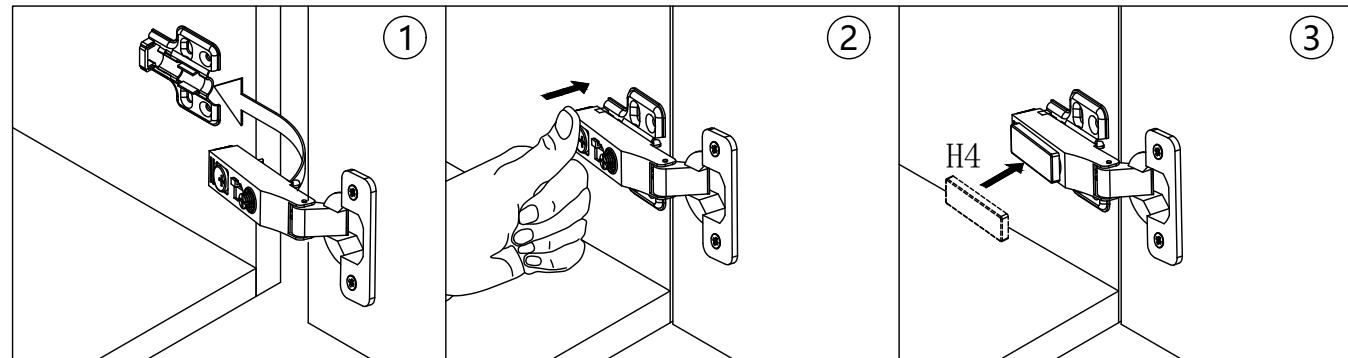
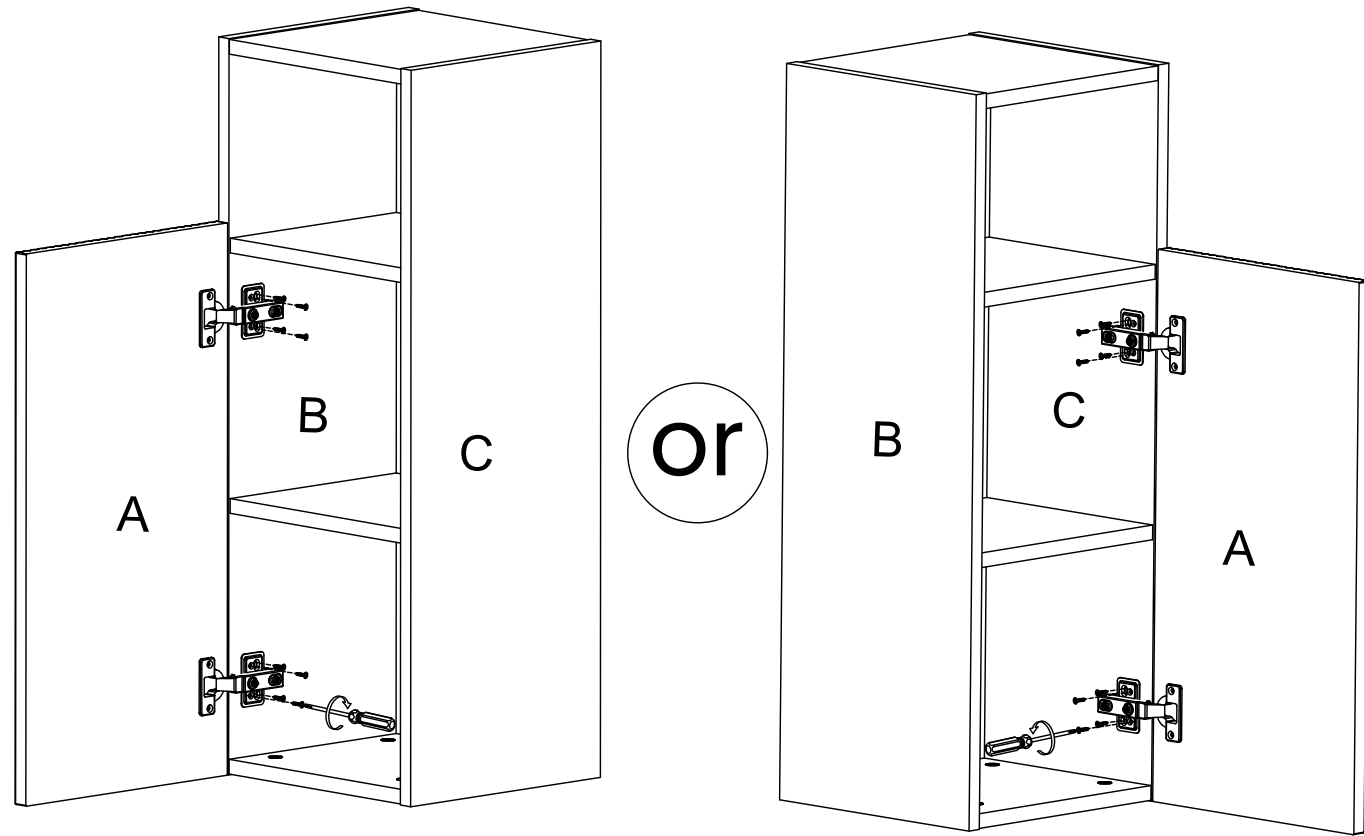
Hammer



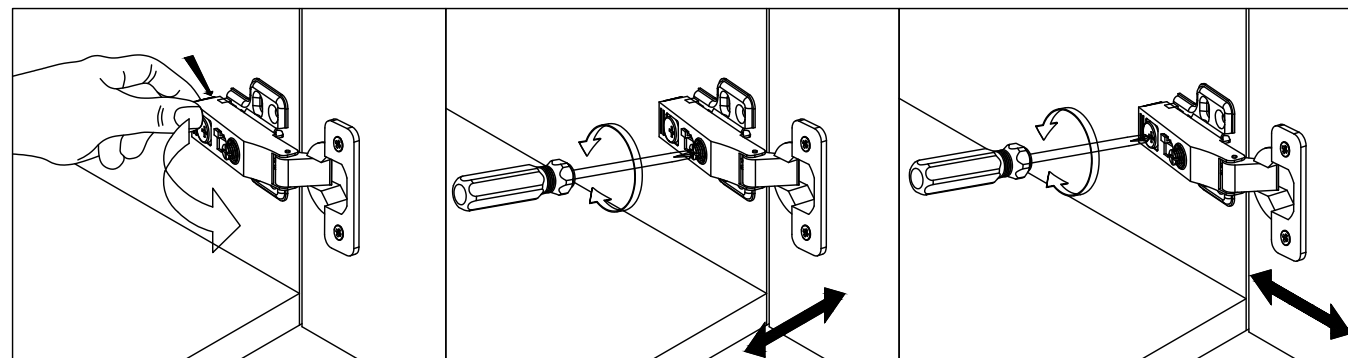
Level







Install the hinge



Disassembly

Adjust according to your needs

