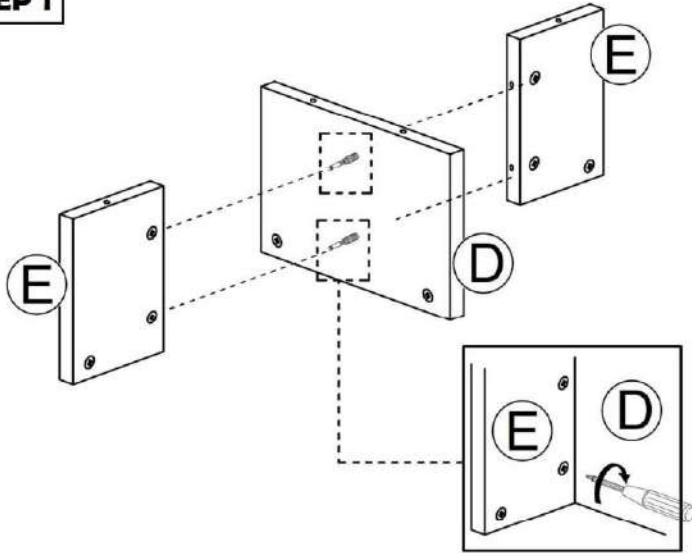
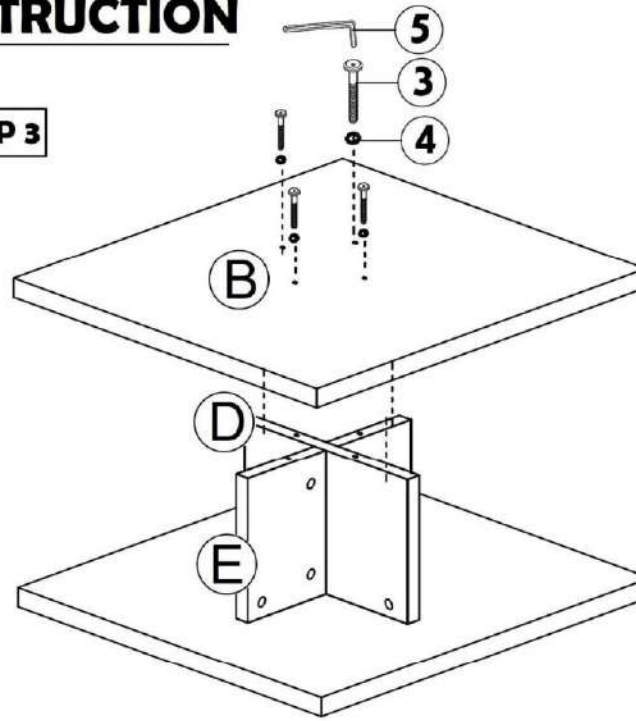


# ASSEMBLY INSTRUCTION

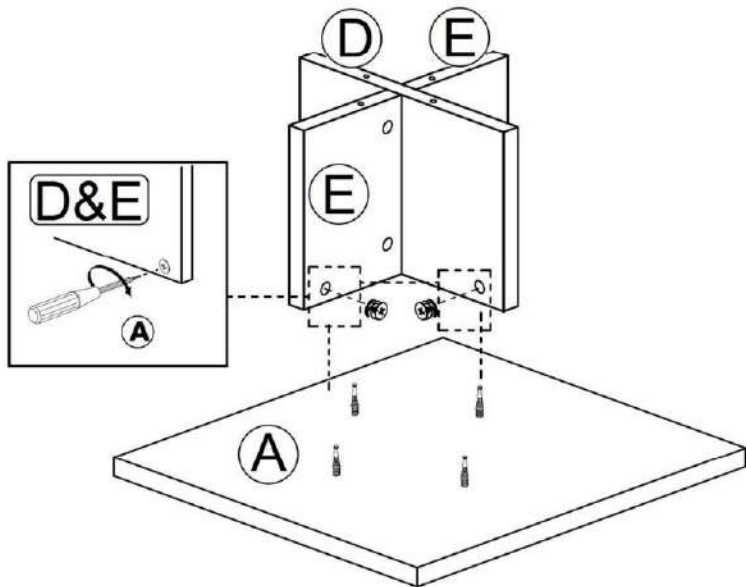
## STEP 1



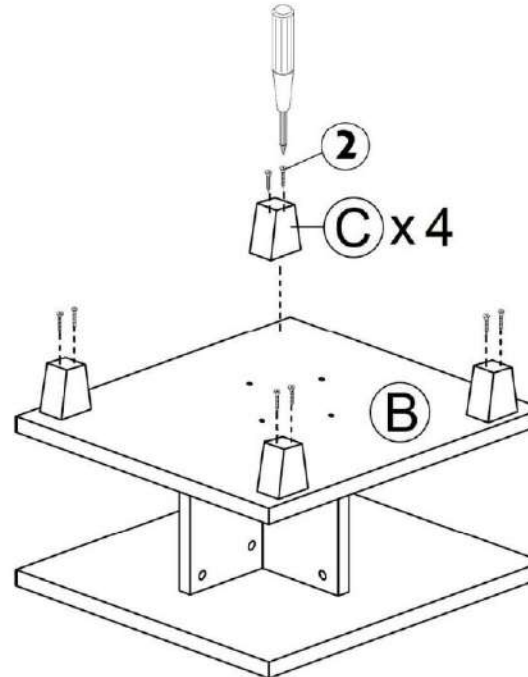
## STEP 3



## STEP 2



## STEP 4



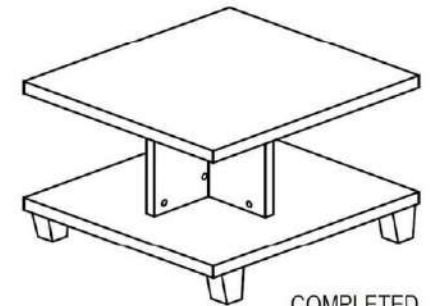
NO	PART LIST	QTY
A	TABLE TOP	1 pc
B	BOTTOM PANEL	1 pc
C	TABLE LEGS	4 pcs
D	CENTER SUPPORT	1 pc
E	CENTER SUPPORT	2 pcs

NO	HARDWARE LIST	QTY
1	MINIFIX 	8 sets
2	CSK M4 X 32MM 	8 pcs
3	JCBC M6X30MM 	4 pcs
4	FLAT WASHER 	4 pcs
5	M4 ALLEN KEY 	1 pc

Read this instruction carefully. Remove all wrapping material, staples and straps from the carton. See hardware and furniture part list for guidance. Be sure you have all wooden furniture parts on a clean and flat soft surface, such as a carpet or rug, to prevent from being scratched.

### CAUTION :

1. Do not FULLY - TIGHTEN the nut or screw until all is ready to assemble.
2. Do not OVER - TIGHTEN the nut or screw to avoid causing damages to the thread.
3. Keep all hardware part out reach of children.



COMPLETED ASSEMBLE

