

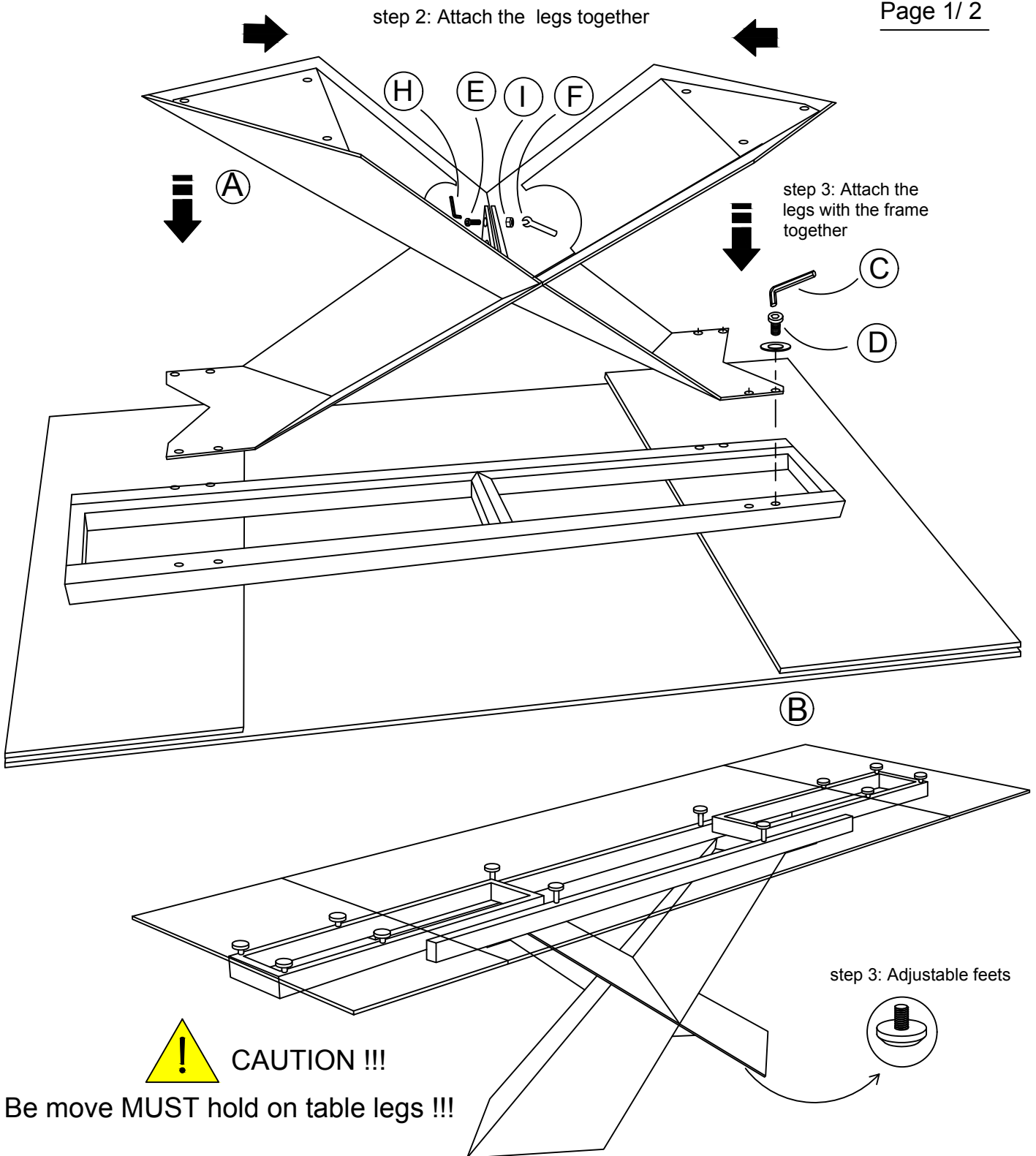
ASSEMBLY INSTRUCTION



CAUTION !!!

The installation need by qualified licensed plumbers.

Page 1 / 2



Small irregularities on the base are due to manual processing.

WARNING

Do not absolutely move the product dragging it or lifting it by gripping the top, but is assemble it and then place it in the new site, protecting the parts that could be damaged.

MAINTENANCE

It is recommended not to use metal sharp tools or abrasive clothes to eliminate dirt from the surface, because they could damage the same. Do not absolutely use detergents containing chlorine, muriatic acid, hydrochloric acid or descale detergents which can damage the surface brilliance.

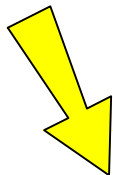


VERY IMPORTANT !!!

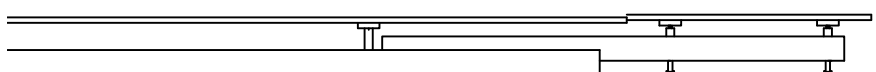
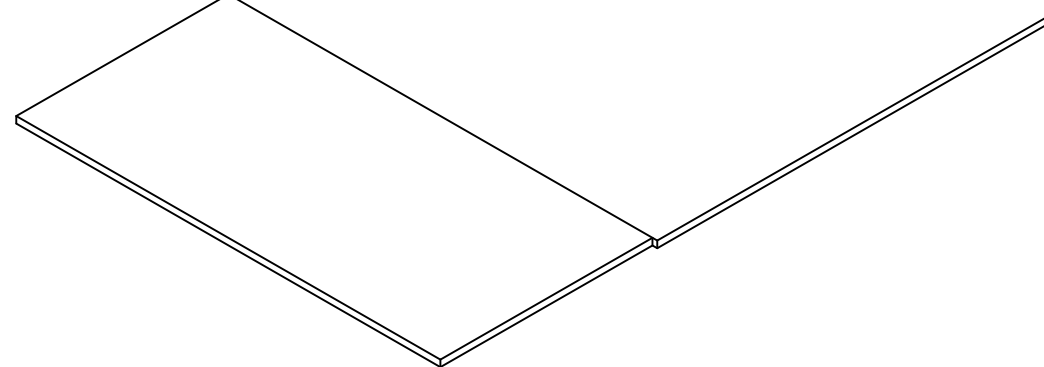
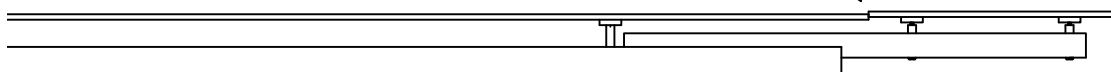
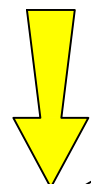
Do not throw away packing materials until you sure to use this table. Return must keep original packing.



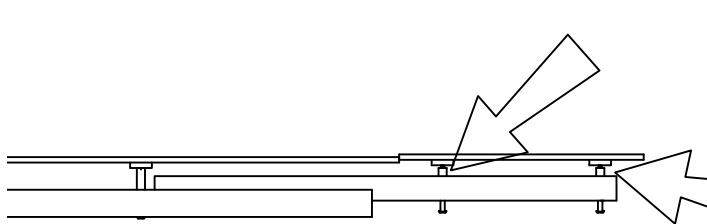
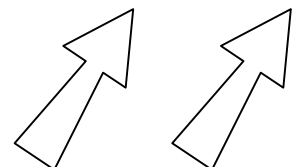
WARNING !!!



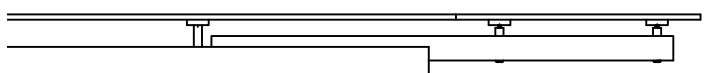
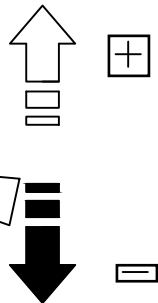
If you find the extension part not align the table top due to transportation reason.



1) loosing the mounting screws without tightening.



2) Adjust the height of the extensions by turning the adjusting cylinders.



3) Then tighten the screws of the extensions.

