

ASSEMBLY INSTRUCTIONS

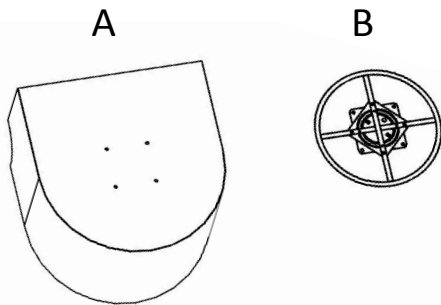
ITEM NO: KJ-0922C



DESCRIPTION: MORGAN SWIVEL CHAIR

Thank you for purchasing this quality product. Be sure to check all packing material carefully for small parts that may have come loose inside the packing during shipment.

**STEP
1**





Carefully turn chair body over onto a soft, clean and stable surface as shown.

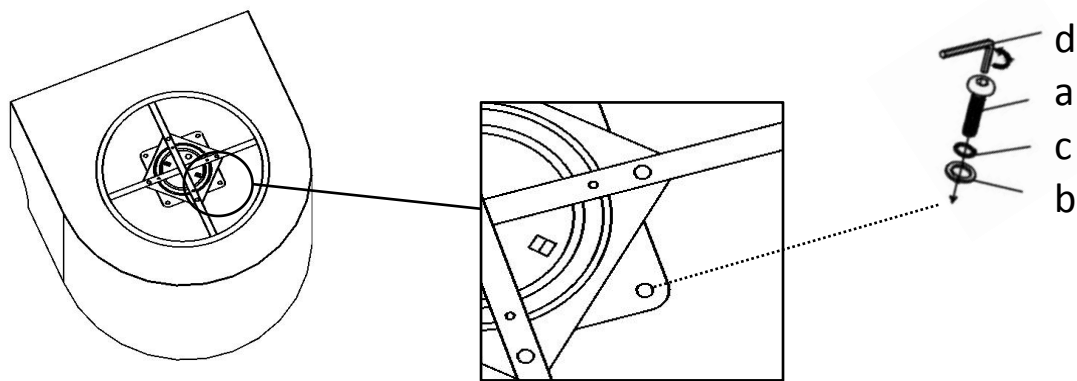


Code	Description	Parts	QTY
A	Chair body		1
B	Swivel base		1

**STEP
2**

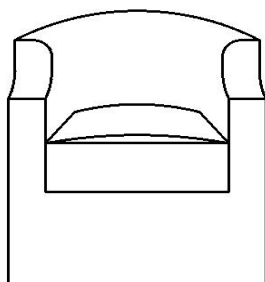
Carefully lay swivel base (B) 's top down toward the bottom of chair body as shown, then assemble swivel base (B) with chair body by using 4pcs flat washers(b)+ 4pcs spring washers(c)+ 4pcs bolts(a) and Allen key(d) carefully as shown, Do not over tighten.

Code	Hardware	Parts	QTY
a	Bolt		4
b	Flat		4
c	Spring		4
d	Allen key		1



**STEP
3**

Carefully flip your furniture over and then set into place, Do not push or drag the item.



THE ASSEMBLY IS COMPLETED.