

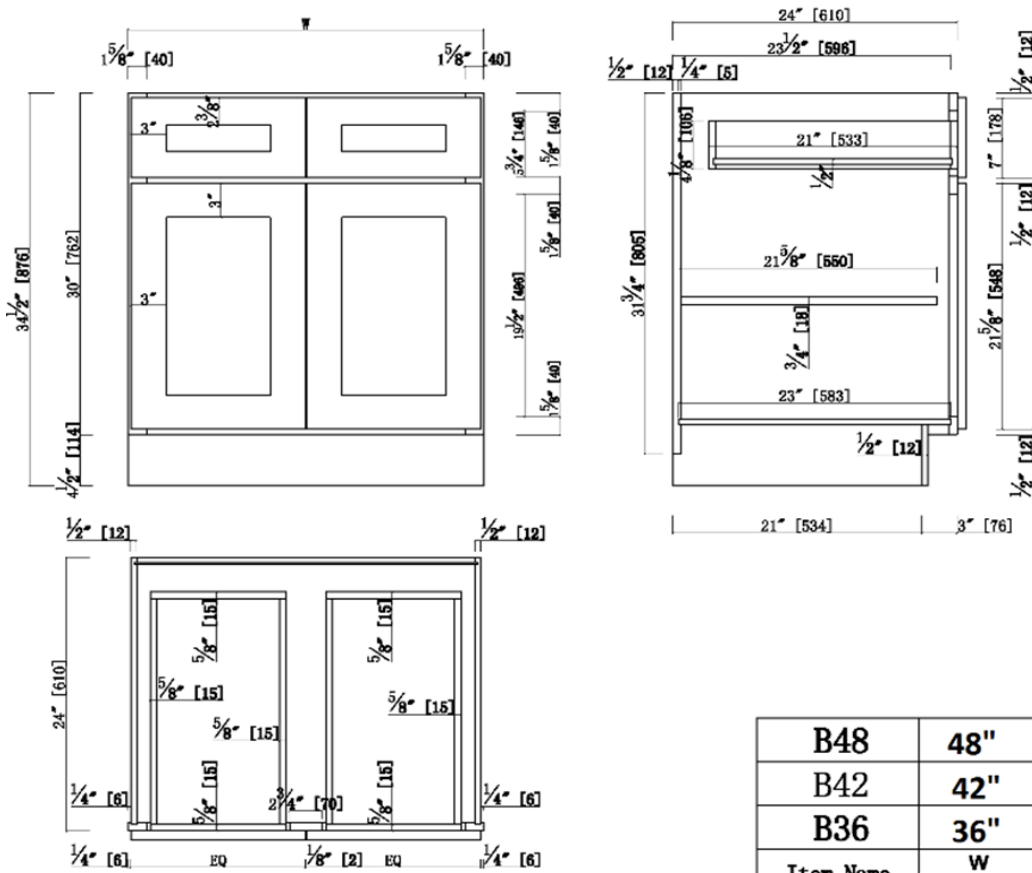
36"/42"/48"x 24"x 34.5" Two Door Two Drawer Base Kitchen Cabinet - Full Assembly

Specifications

- 3" Wide Shaker Door
- 3/4" Solid maple face frame, Fully overlay with 1/4" reveal
- MDF with wood veneer for door center & drawer center for espresso finish
- 3/4" solid maple door frame & drawer frame for espresso finish
- 3/4" Premium HDF door & drawer front for white finish
- Soft-closing hinge, 6 way adjustable
- Under-mounted epoxy glide, soft-closing glide can be offered for upgrade option.
- 21" Solid Wood Dovetail Drawers
- 1/2" plywood with poplar veneer for side panels, bottom panels
- Metal Clips connectors
- Full Assembly
- CARB P2 compliant



Dimensions



| | | |
|-----------|-----|--------|
| B48 | 48" | 23.75" |
| B42 | 42" | 20.75" |
| B36 | 36" | 17.75" |
| Item Name | W | EQ |

Warranty & Compliances

Warranty: Limited 1 year warranty
 California 93120: Compliant



Order Codes & Finishes/Colors

Espresso Finish
 36" x 24" x 34.5"
 42" x 24" x 34.5"
 48" x 24" x 34.5"

White Finish
 36" x 24" x 34.5"
 42" x 24" x 34.5"
 48" x 24" x 34.5"