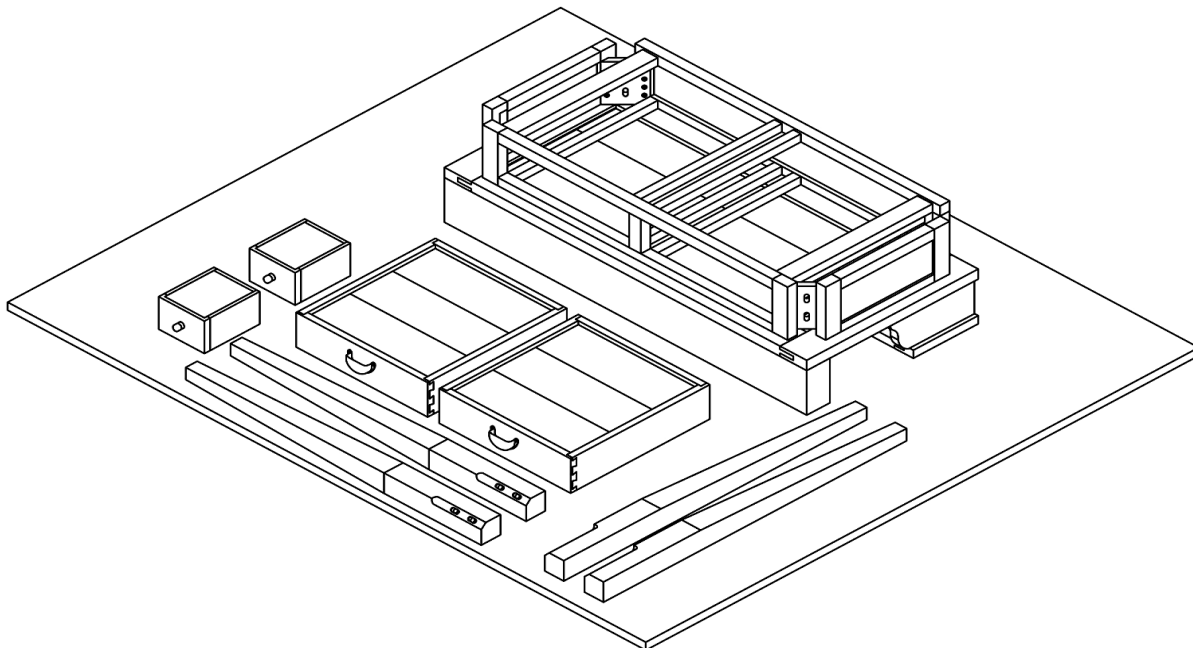


ASSEMBLY INSTRUCTION

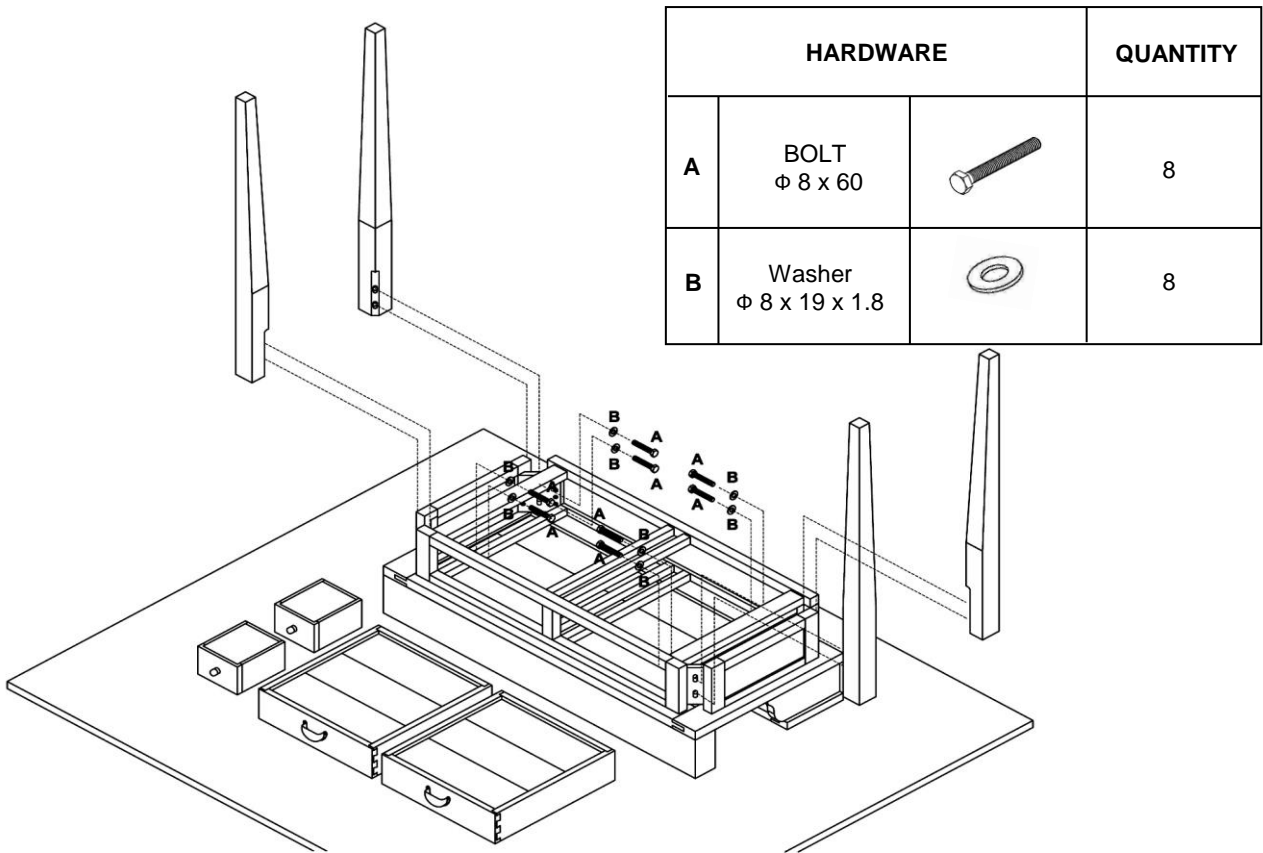
WRITING BUREAU

1



Assembly requires two adults.
Take out the drawers.
We suggest to place the table upside down on a blanket to protect it from scratching.

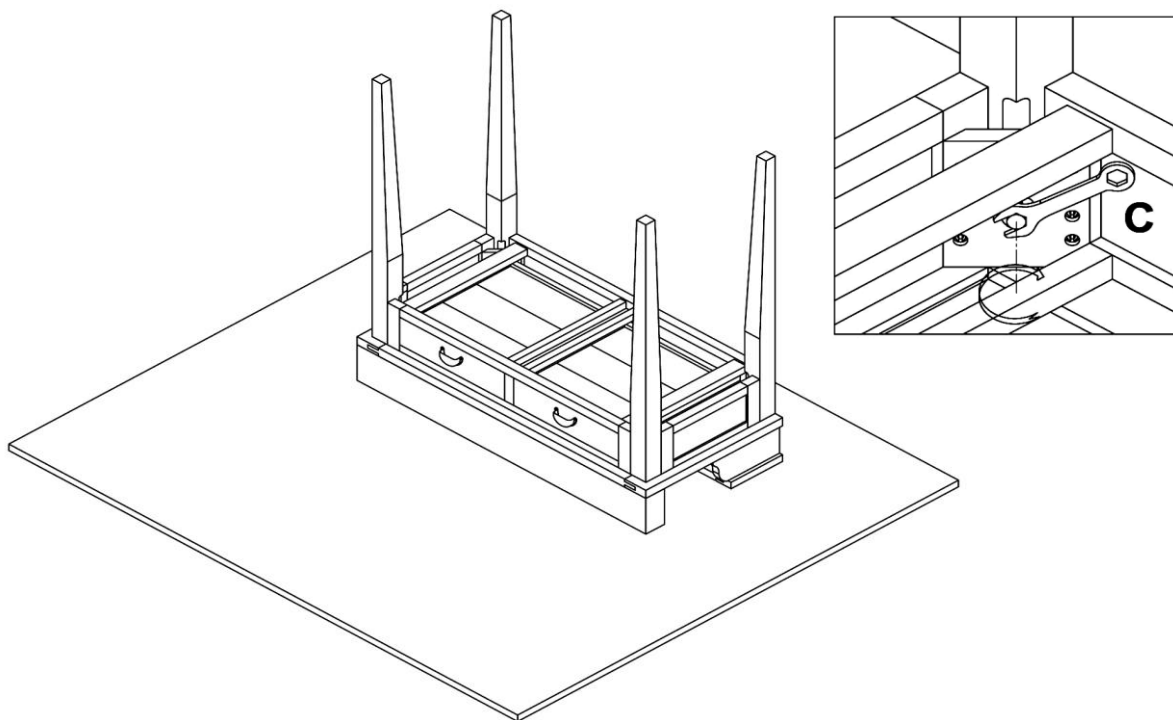
2



Attach the legs using bolt (A) and washer (B). ©

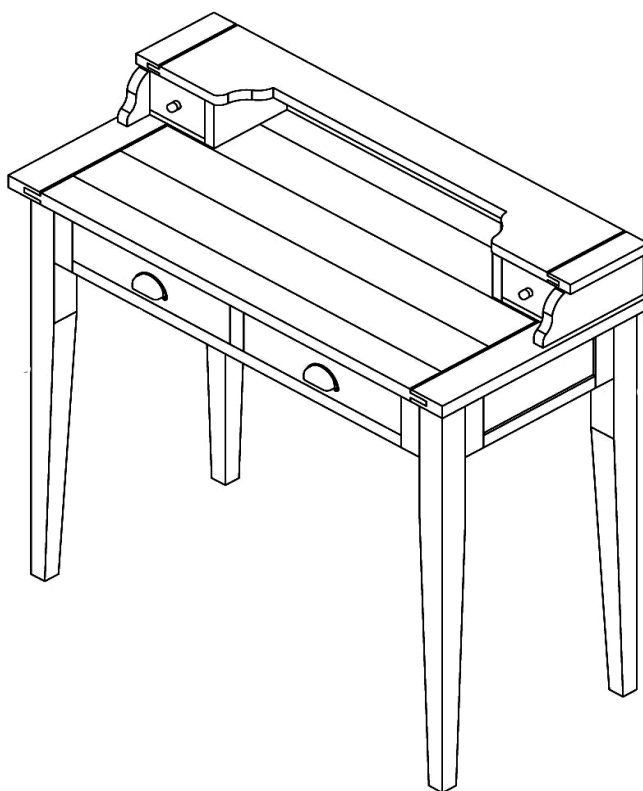
ASSEMBLY INSTRUCTION WRITING BUREAU

3



Turn table over to all on self levelling of legs before tightening all bolts by using ring spanner (C), do not use power tool.

4



Refit the drawer, and turn the drawer stops down.

©

— FINISH —